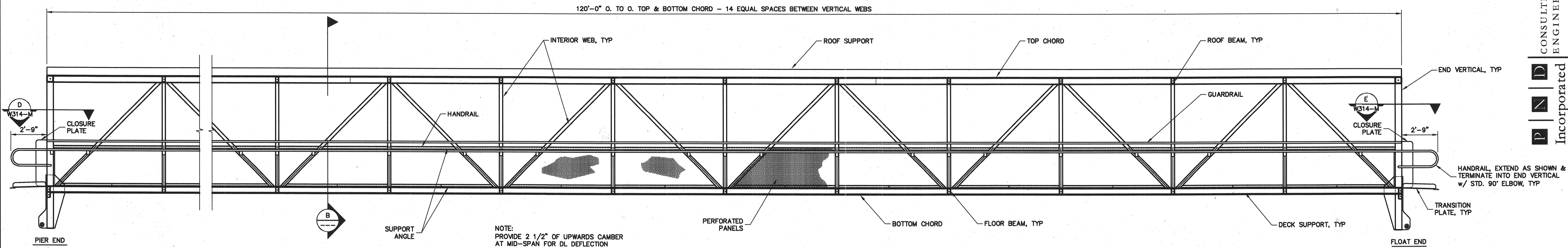


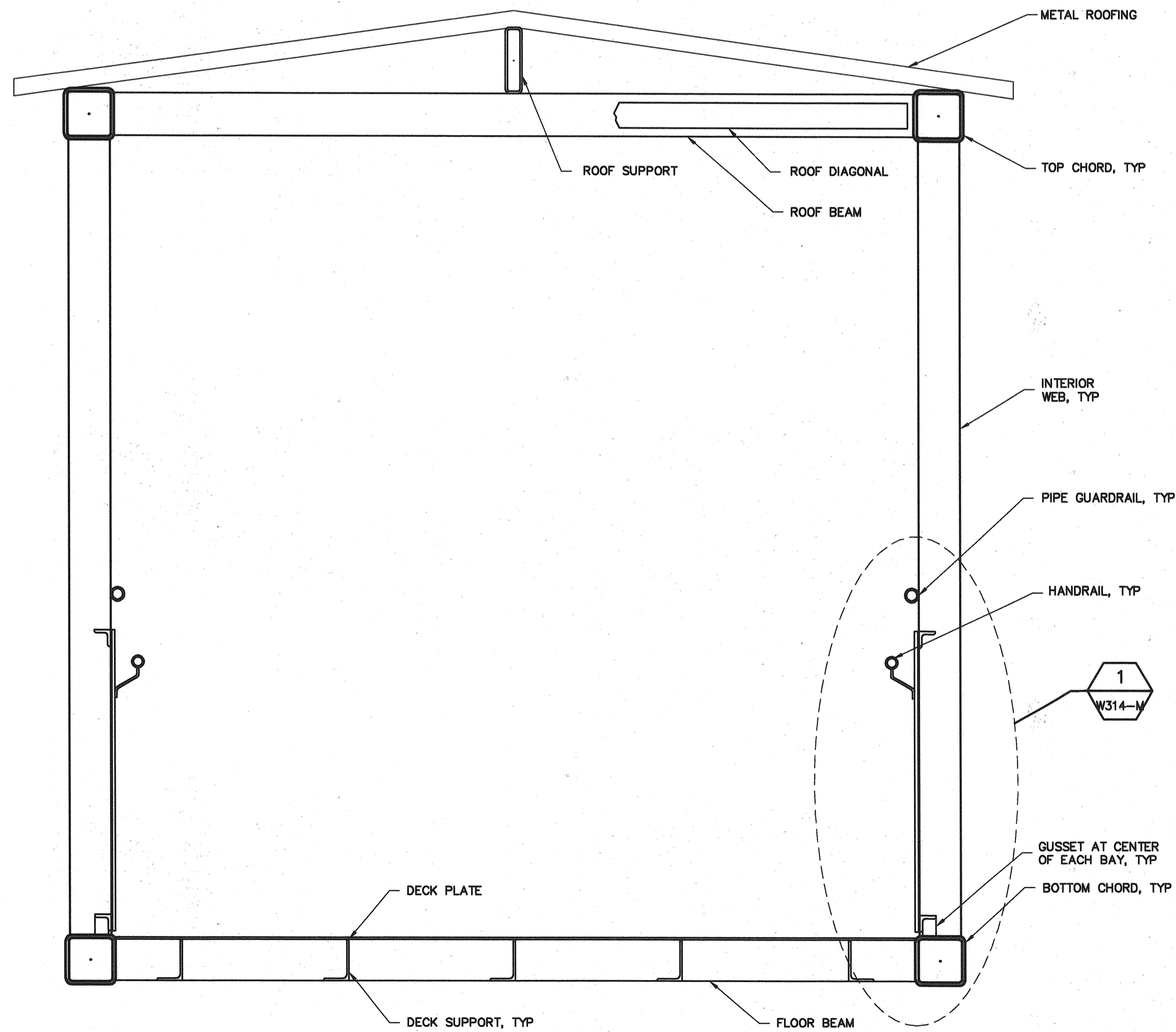
9/30/04
 Filename: 20343802-MA-W311-ALT-100



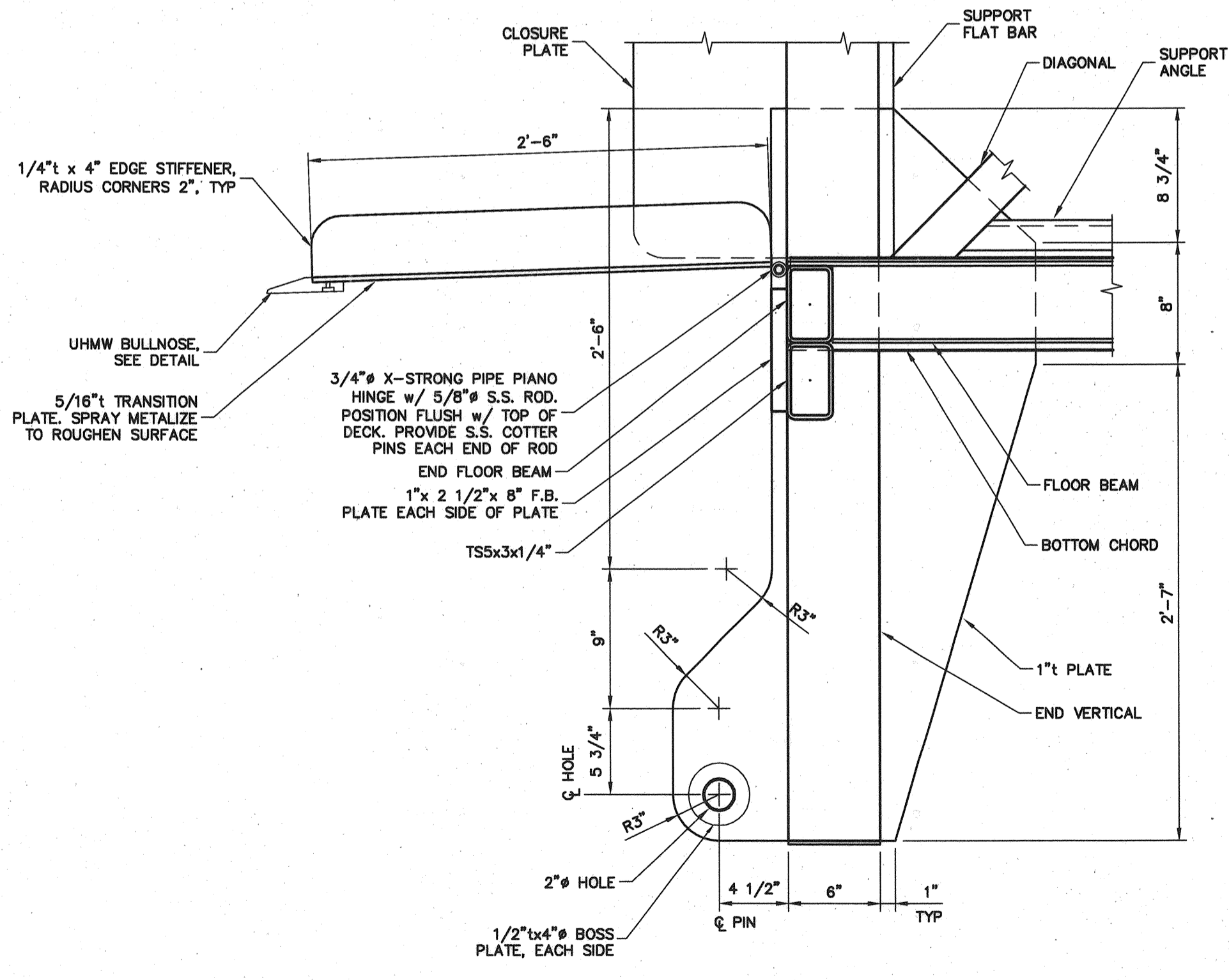
NOTE:
 FOR DETAILS NOT SHOWN SEE
 PEDESTRIAN GANGWAYS 1 & 2
 SHEETS.

SECTION A
 SCALE: 1/4"=1'-0"
 W309-M
 (SIM)

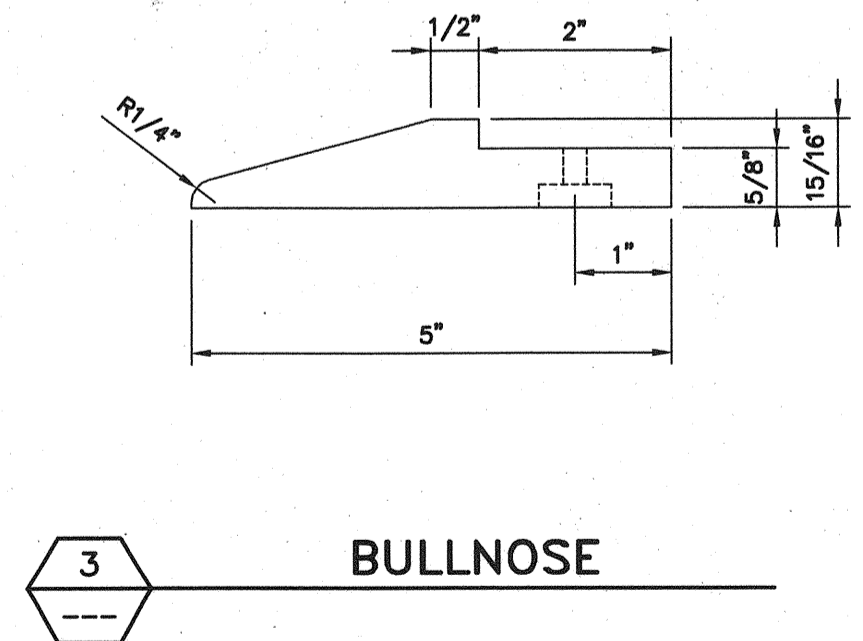
NOTE:
 WELD ALL JOINTS WITH 1/4" FILLET WELD
 OR EQUIVALENT BEVEL WELD ALL AROUND
 UNLESS OTHERWISE NOTED.



SECTION B
 SCALE: 1"=1'-0"



2 PIER/FLOAT END DETAIL

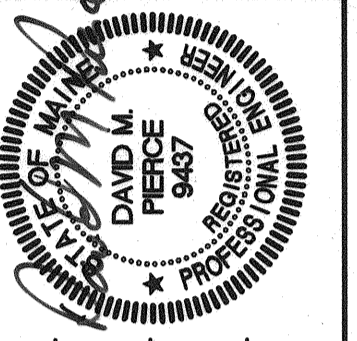


ALTERNATE No. 4

811 First Avenue, Suite 570
 Seattle, Washington 98104
 Phone: (206) 464-8877
 Fax: (206) 464-1388
 E-Mail: mail@probesa.com

CONSULTING ENGINEERS Incorporated

STATE OF MAINE
 DEPARTMENT OF TRANSPORTATION
 PROJECT NUMBER 009215.00
 PIN 009215.00



SIGNATURE
 P.E. NUMBER
 DATE

PROJ. MANAGER	PAUL POTTLE	BY	DATE
DESIGN-DETAILED	TWB	DH	09/01/04
CHECKED-REVIEWED	RJ	DP	09/01/04
DESIGN2-DETAILED2			
DESIGN3-DETAILED3			
REVISIONS 1			
REVISIONS 2			
REVISIONS 3			
REVISIONS 4			
FIELD CHANGES			

CITY OF PORTLAND
 OCEAN GATEWAY PHASE 1
 PIER 2 BERTH 2
 PEDESTRIAN GANGWAY 3

**W311-M
 ALT.**