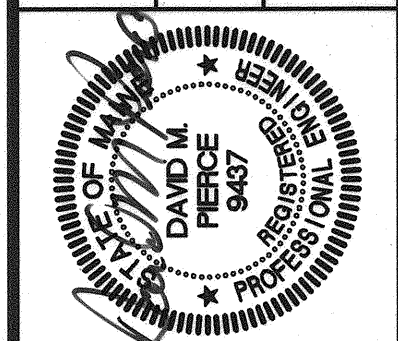


811 First Avenue, Suite 570
 Seattle, Washington 98104
 Phone: (206) 434-1387
 Fax: (206) 434-1387
 E-Mail: info@prbsea.com

CONSULTING ENGINEERS Incorporated

STATE OF MAINE
 DEPARTMENT OF TRANSPORTATION
 PROJECT NUMBER 009215.00
 PIN 009215.00

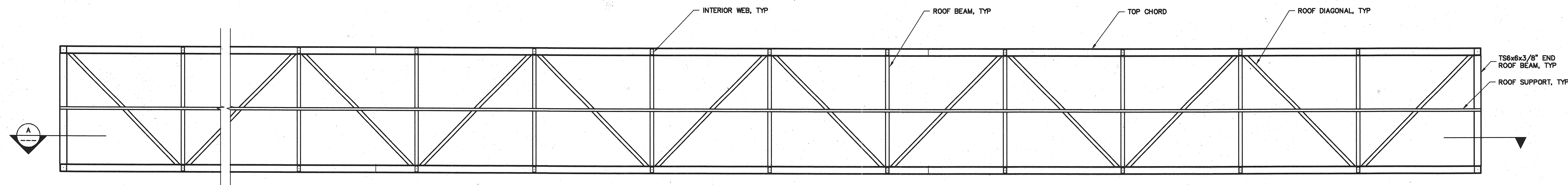


SIGNATURE: *[Signature]*
 P.E. NUMBER: 9437
 DATE: 1/16/04

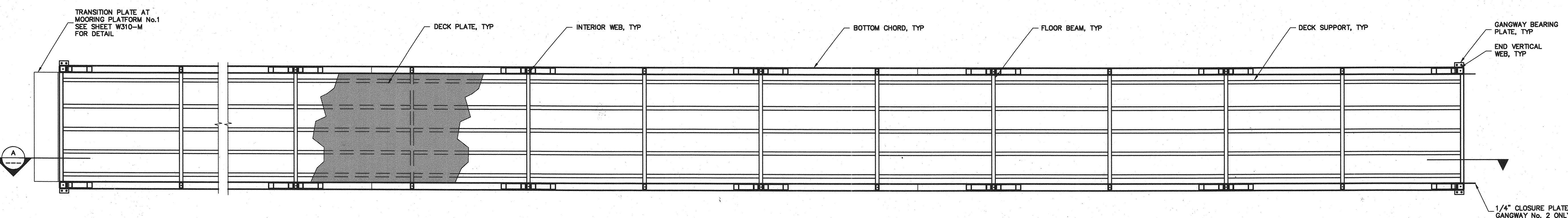
PROJ. MANAGER	PAUL POTLIE	DATE
DESIGN-DETAILED	TMB	09/01/04
CHECKED-REVIEWED	RJ	09/01/04
DESIGN-2-DETAILED	DP	
DESIGN-3-DETAILED		
REVISIONS		
REVISIONS 1		
REVISIONS 2		
REVISIONS 3		
REVISIONS 4		
FIELD CHANGES		

CITY OF PORTLAND
 OCEAN GATEWAY PHASE 1
 PIER 2 BERTH 2
 PEDESTRIAN GANGWAY 1 & 2

W309-M
 ALT.
 114 OF 288



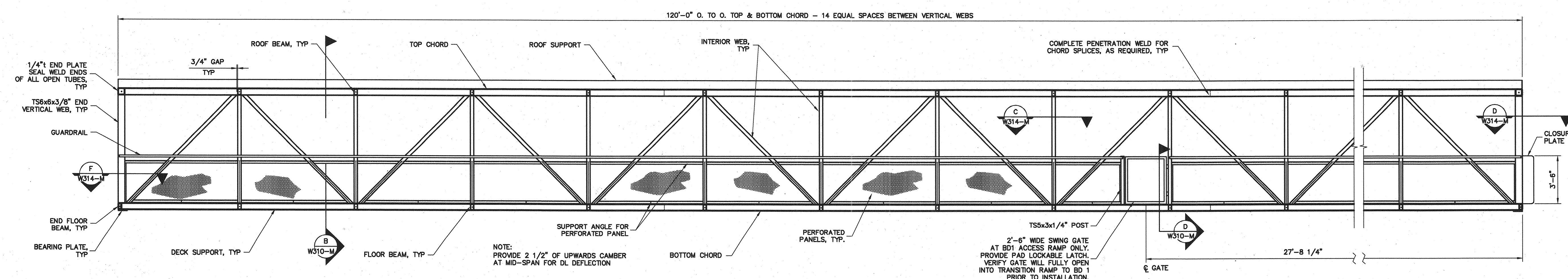
ROOF PLAN
 SCALE: 1/4"=1'-0"



NOTE:
 WELD ALL JOINTS WITH 1/4" FILLET WELD
 OR EQUIVALENT BEVEL WELD ALL AROUND
 UNLESS OTHERWISE NOTED.

FLOOR PLAN
 SCALE: 1/4"=1'-0"

NOTE:
 SEE SHEET W310-M FOR MEMBER
 SIZES AND ADDITIONAL INFORMATION.



SECTION A-A
 SCALE: 1/4"=1'-0"

ALTERNATE No. 4

9/30/04
 Filename: 2034-3802-M-W309-ALT-100