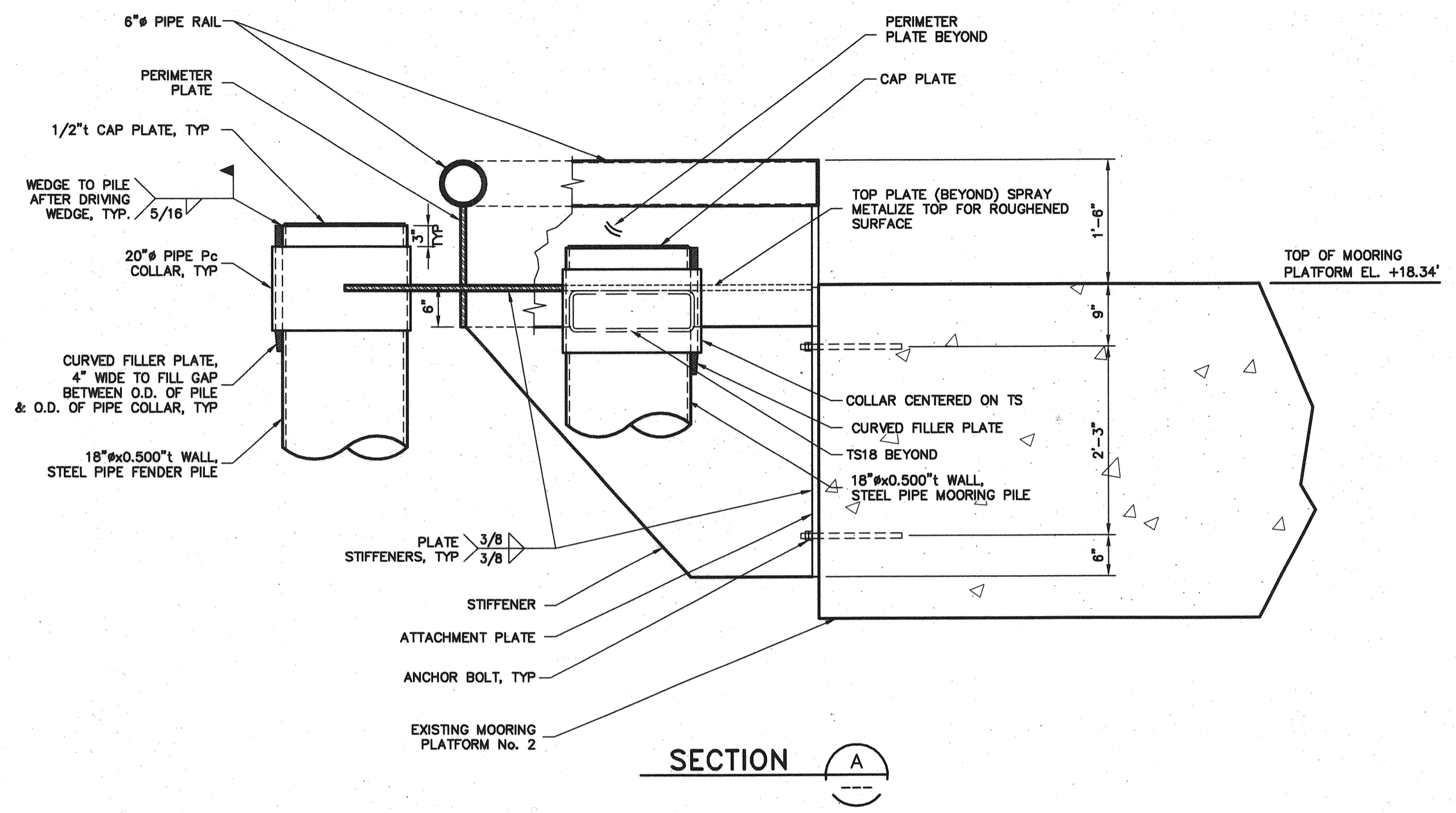


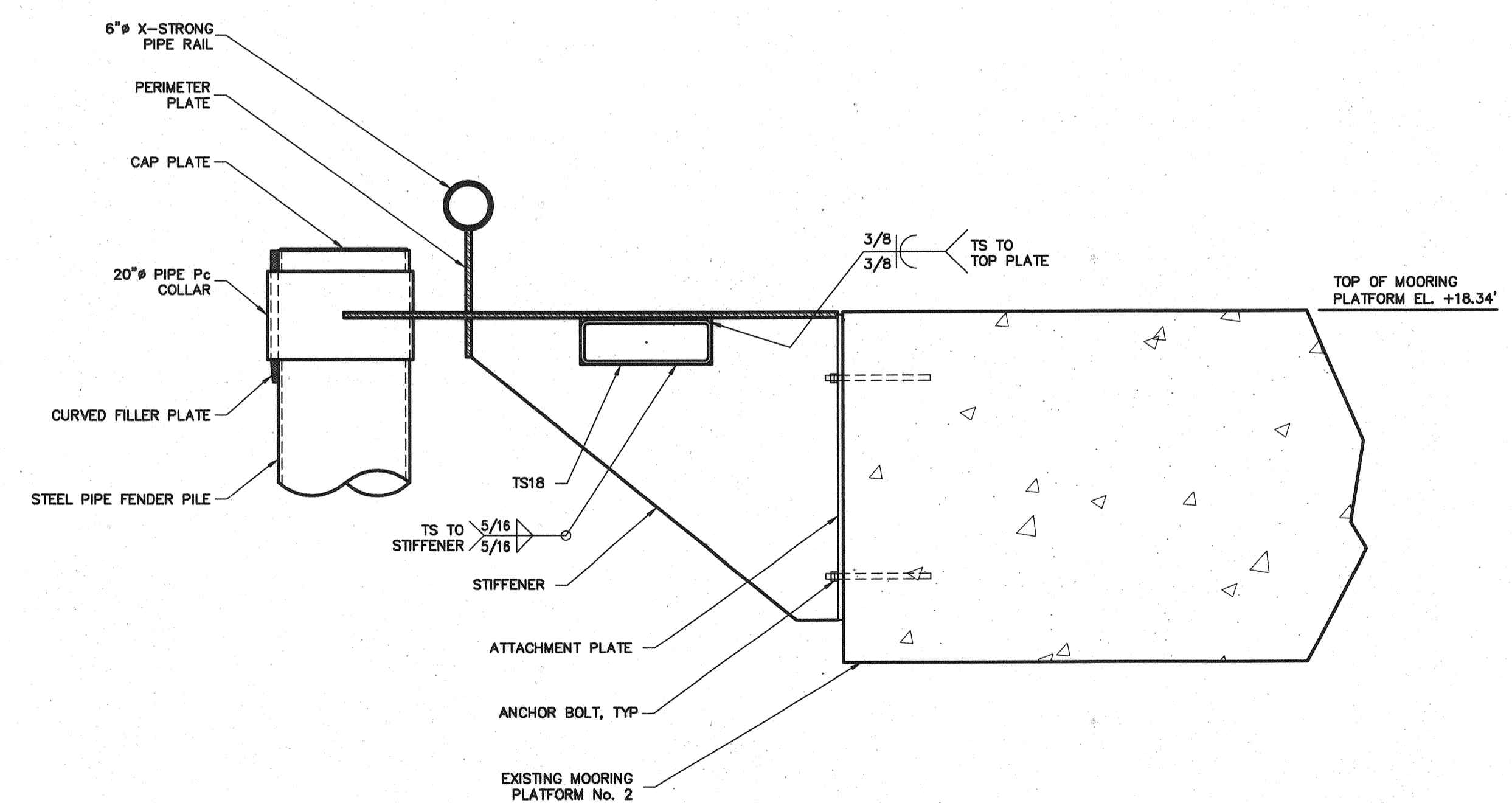
**PLAN—MOORING PLATFORM
 FENDER No. 1**

SCALE 1/2"=1'-0"
 (FENDER No. 2 SIMILAR)

NOTE:
 ALL PLATES 3/4"t UNLESS
 OTHERWISE NOTED.



SECTION A



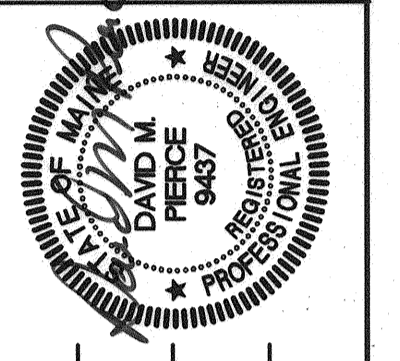
SECTION B

FOR DETAILS NOT SHOWN SEE SECTION A

811 First Avenue, Suite 570
 Seattle, Washington 98104
 Phone: (206) 434-8677
 Fax: (206) 434-8388
 E-Mail: mail@prabasa.com

**CONSULTING
 ENGINEERS**
Incorporated

**STATE OF MAINE
 DEPARTMENT OF TRANSPORTATION**
PROJECT NUMBER 009215.00
 PIN
 009215.00



SIGNATURE
 P.E. NUMBER
 DATE

| DATE | BY | PROJ. MANAGER | PAUL POTTE |
|----------|----|-------------------|------------|
| 09/01/04 | DH | TMB | |
| 09/01/04 | DP | RJ | |
| | | DESIGN2-DETAILED2 | |
| | | DESIGN3-DETAILED3 | |
| | | REVISIONS 1 | |
| | | REVISIONS 2 | |
| | | REVISIONS 3 | |
| | | REVISIONS 4 | |
| | | FIELD CHANGES | |

**CITY OF PORTLAND
 OCEAN GATEWAY PHASE 1
 PIER 2 BERTH 2
 FENDER**

**W302-M
 ALT.**