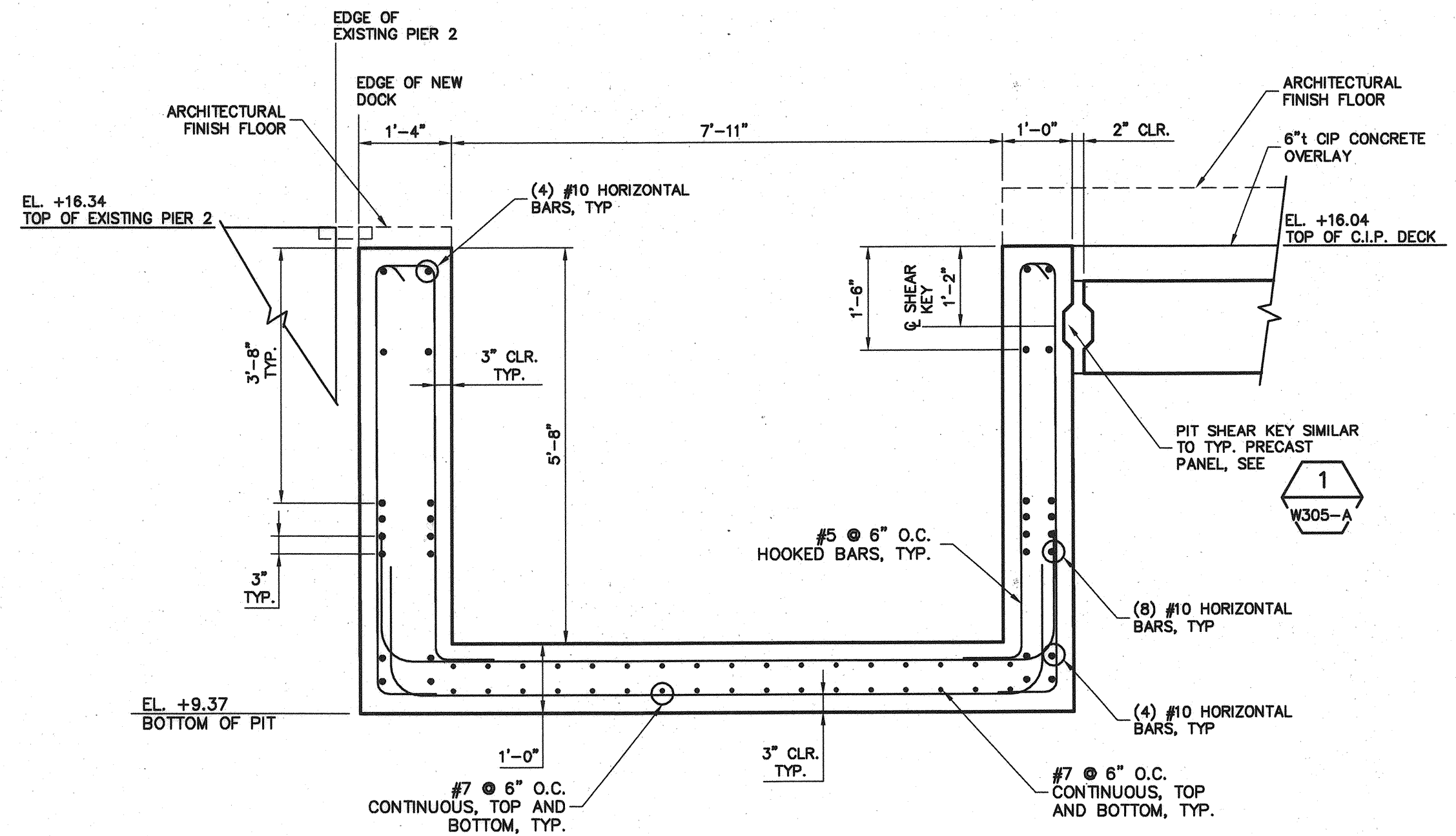


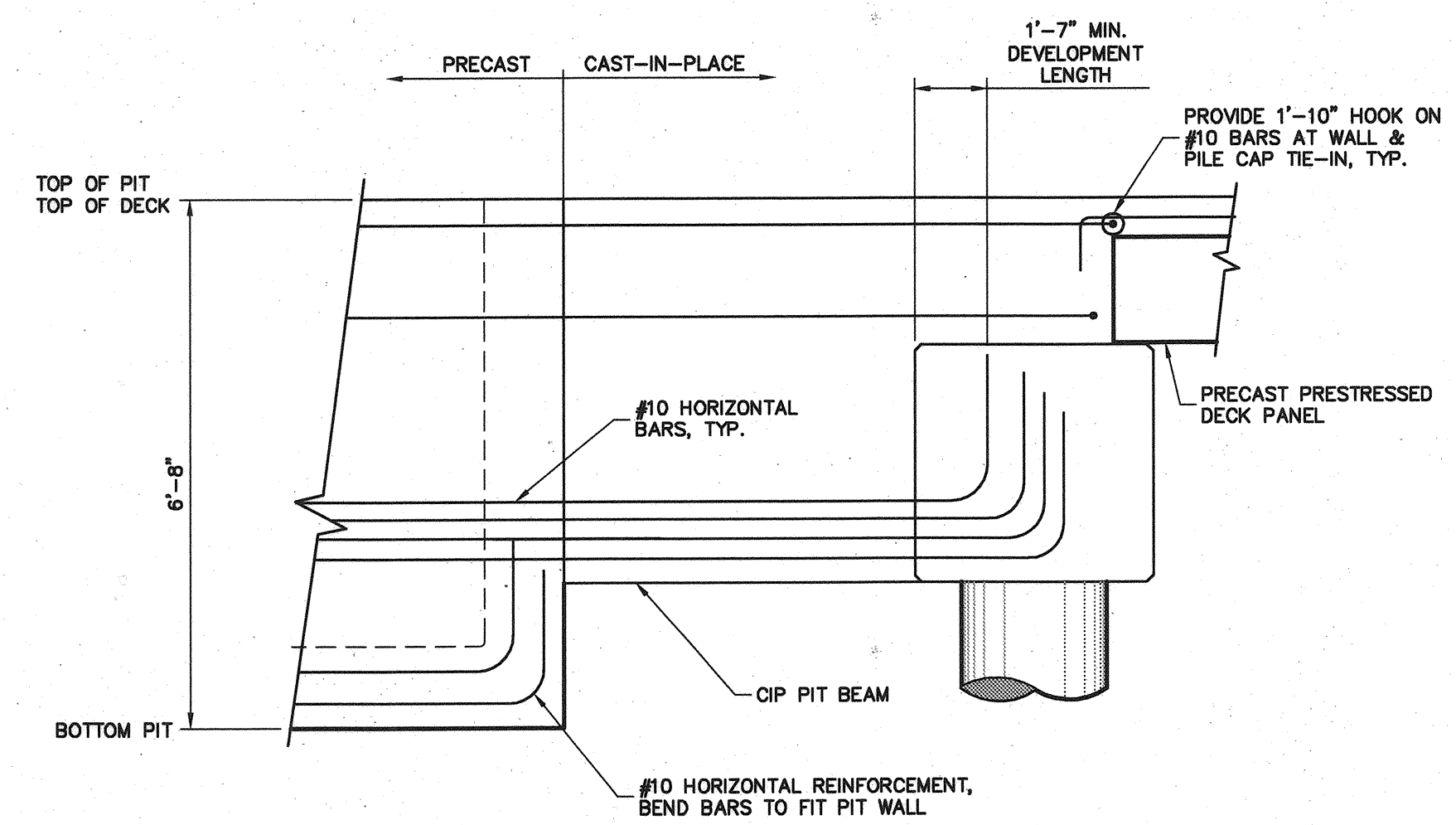
1 ELEVATOR & SUMP PIT PLAN
W102-A

BAR SIZE	MINIMUM LAP SPLICE LENGTH	HOOK LENGTH
#4	3'-4"	8"
#5	5'-2"	10"
#10	8'-6"	1'-10"

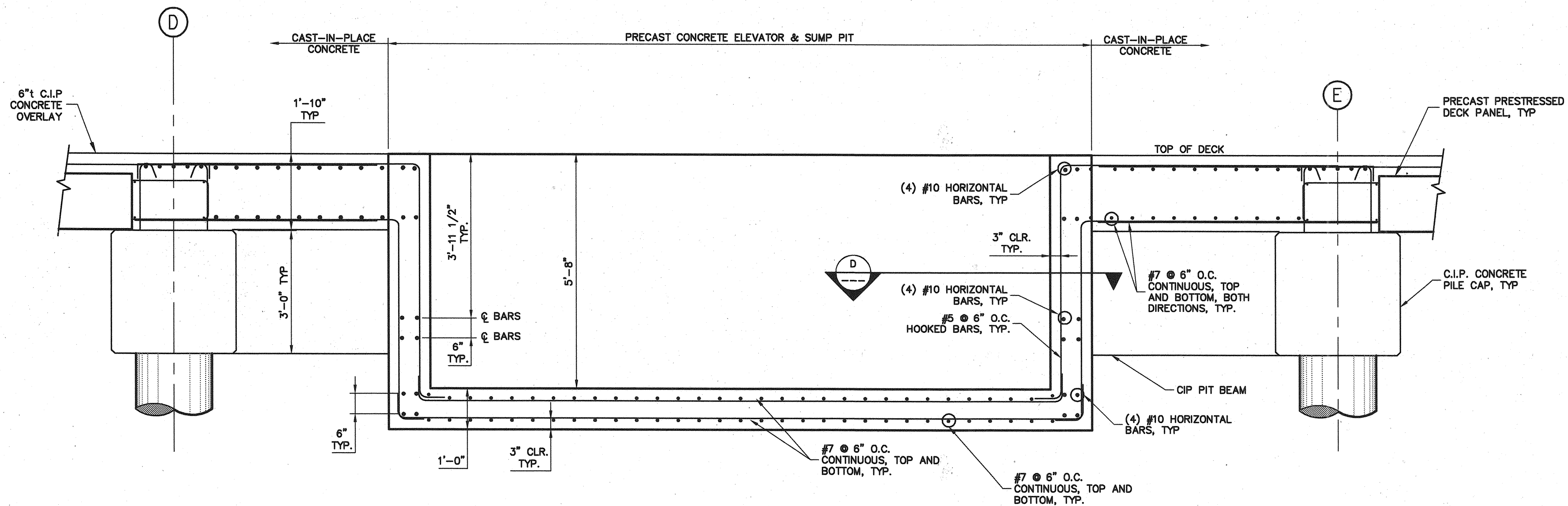
NOTE: ALL REBAR SHALL BE EPOXY COATED



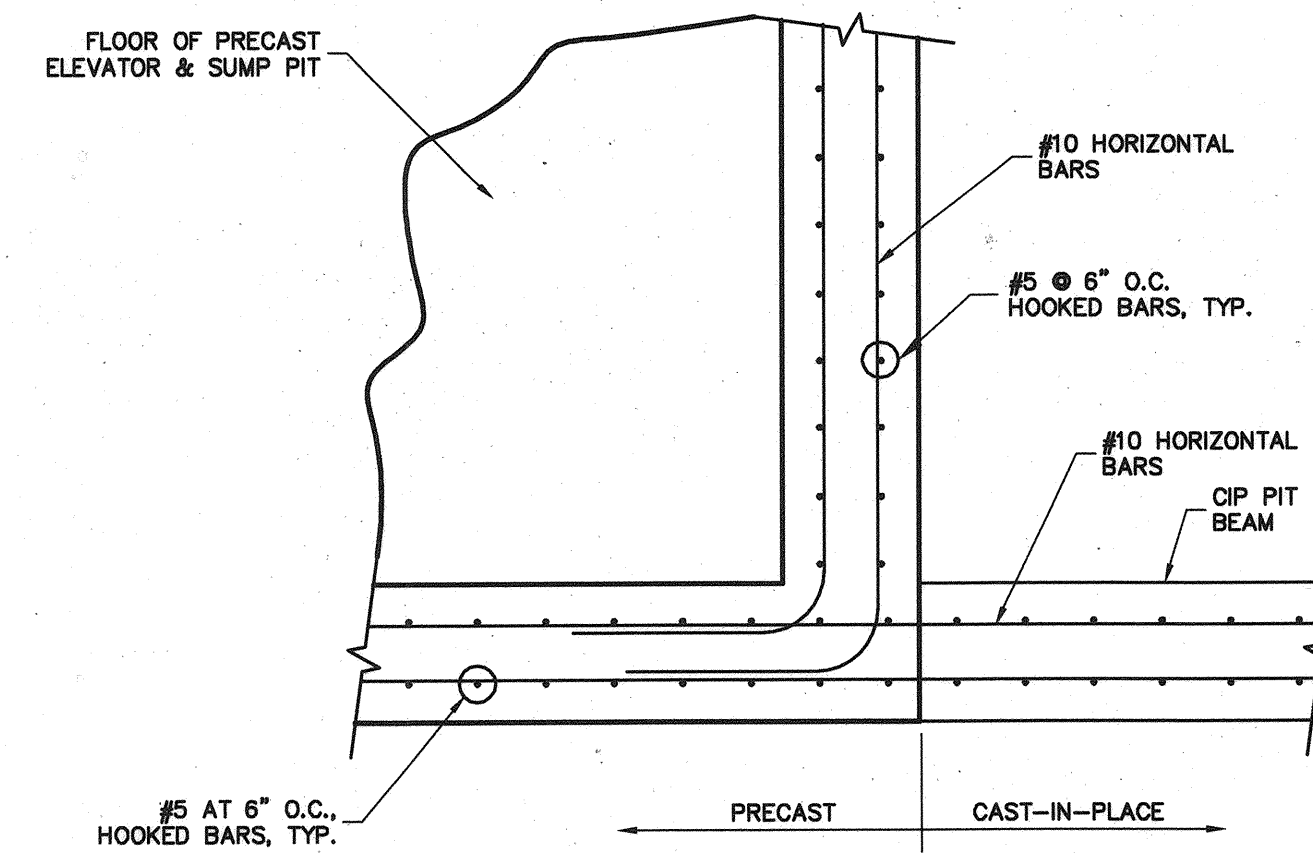
SECTION B



SECTION C



SECTION A

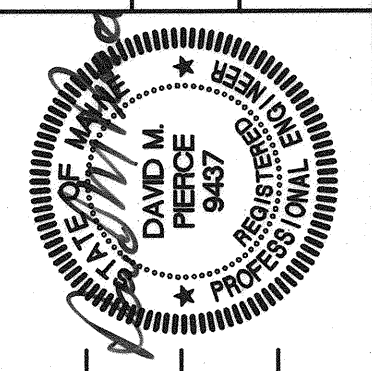


SECTION D

811 First Avenue, Suite 570
Seattle, Washington 98104
Phone: (206) 624-1387
Fax: (206) 624-1388
E-Mail: info@spina.com

CONSULTING ENGINEERS Incorporated

STATE OF MAINE
DEPARTMENT OF TRANSPORTATION
PROJECT NUMBER 009215.00
PIN 009215.00



SIGNATURE: DAVID M. PIERCE
P.E. NUMBER: 9437
DATE: 10/16/04

PROJ. MANAGER	PAUL FOTILE	DATE
DESIGN-DETAILED	IRJ	09/01/04
CHECKED-REVIEWED	OT	09/01/04
DESIGN2-DETAILED	DP	
DESIGN3-DETAILED		
REVISIONS 1		
REVISIONS 2		
REVISIONS 3		
REVISIONS 4		
FIELD CHANGES		

CITY OF PORTLAND
OCEAN GATEWAY PHASE 1
PIER A
ELEVATOR & SUMP PIT DETAILS

W303-A