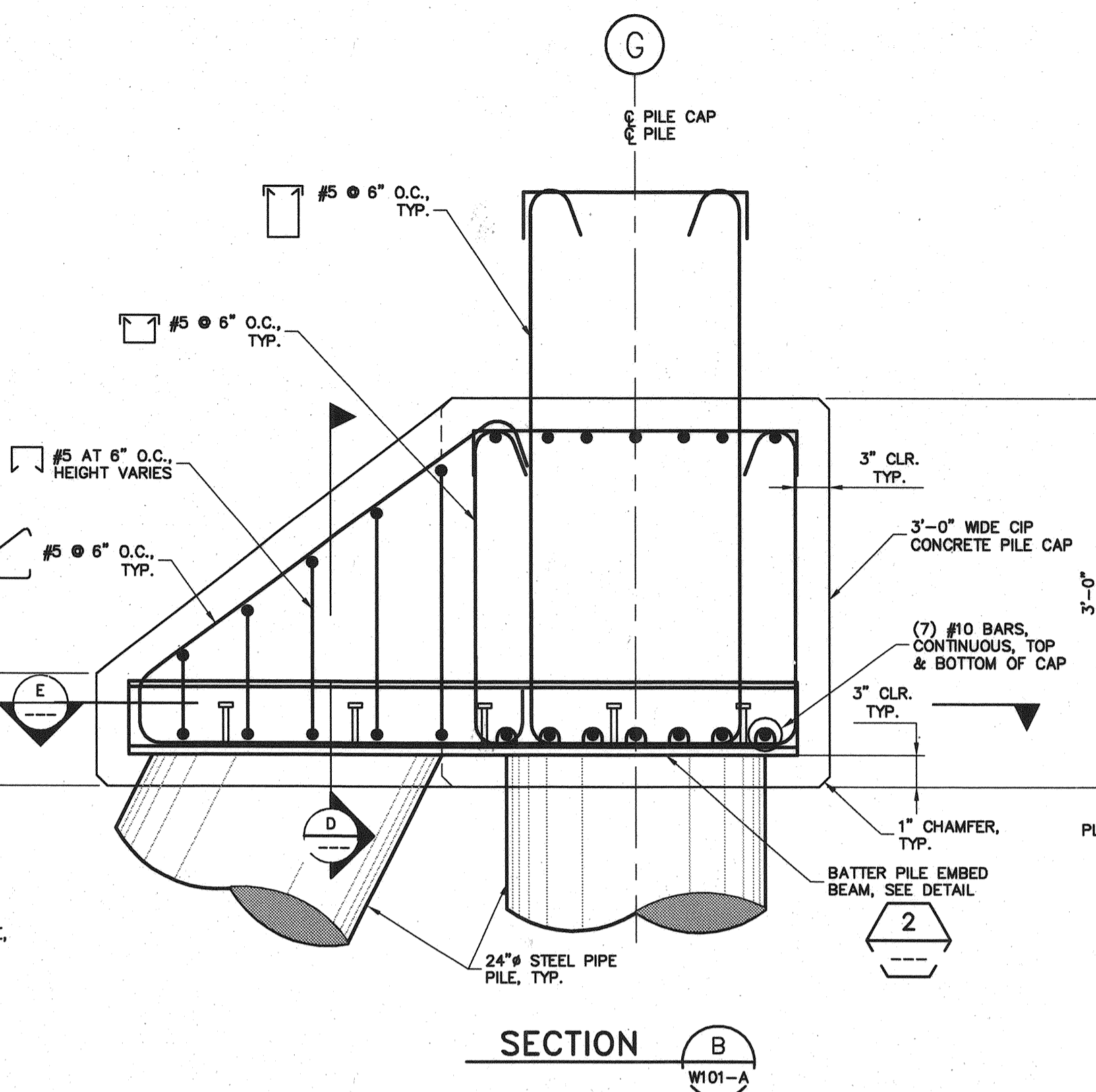
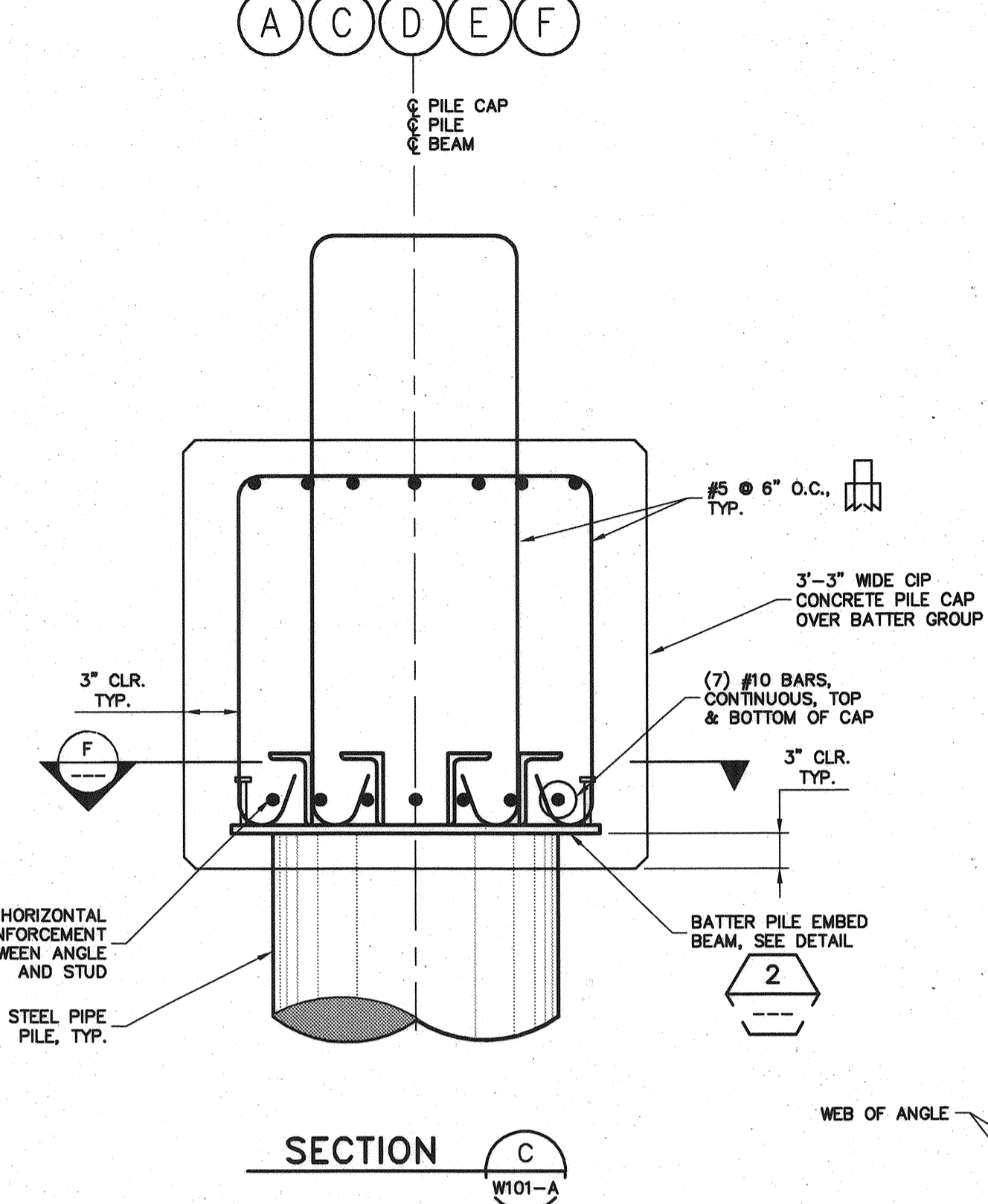


SECTION A  
W101-A



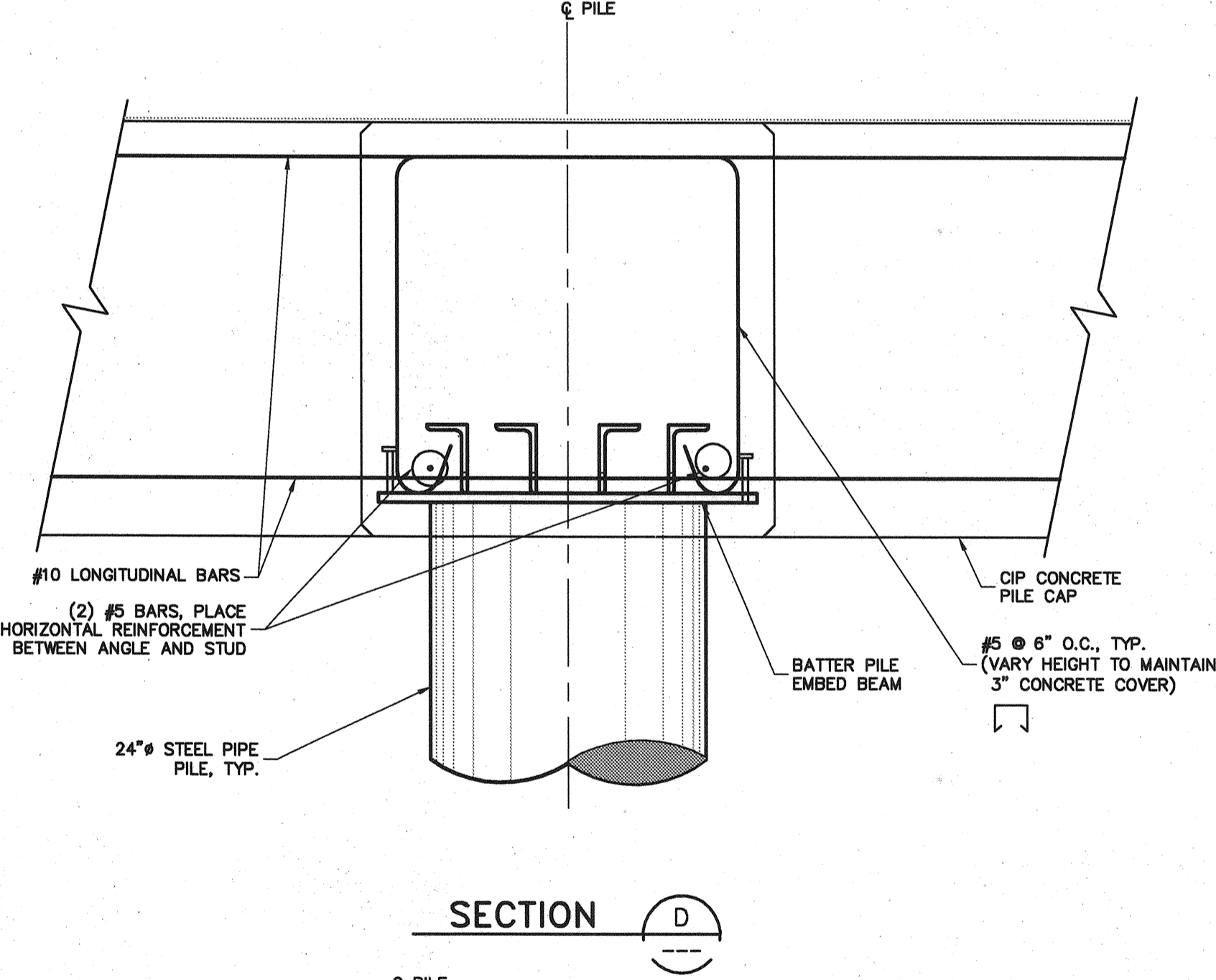
SECTION B  
W101-A



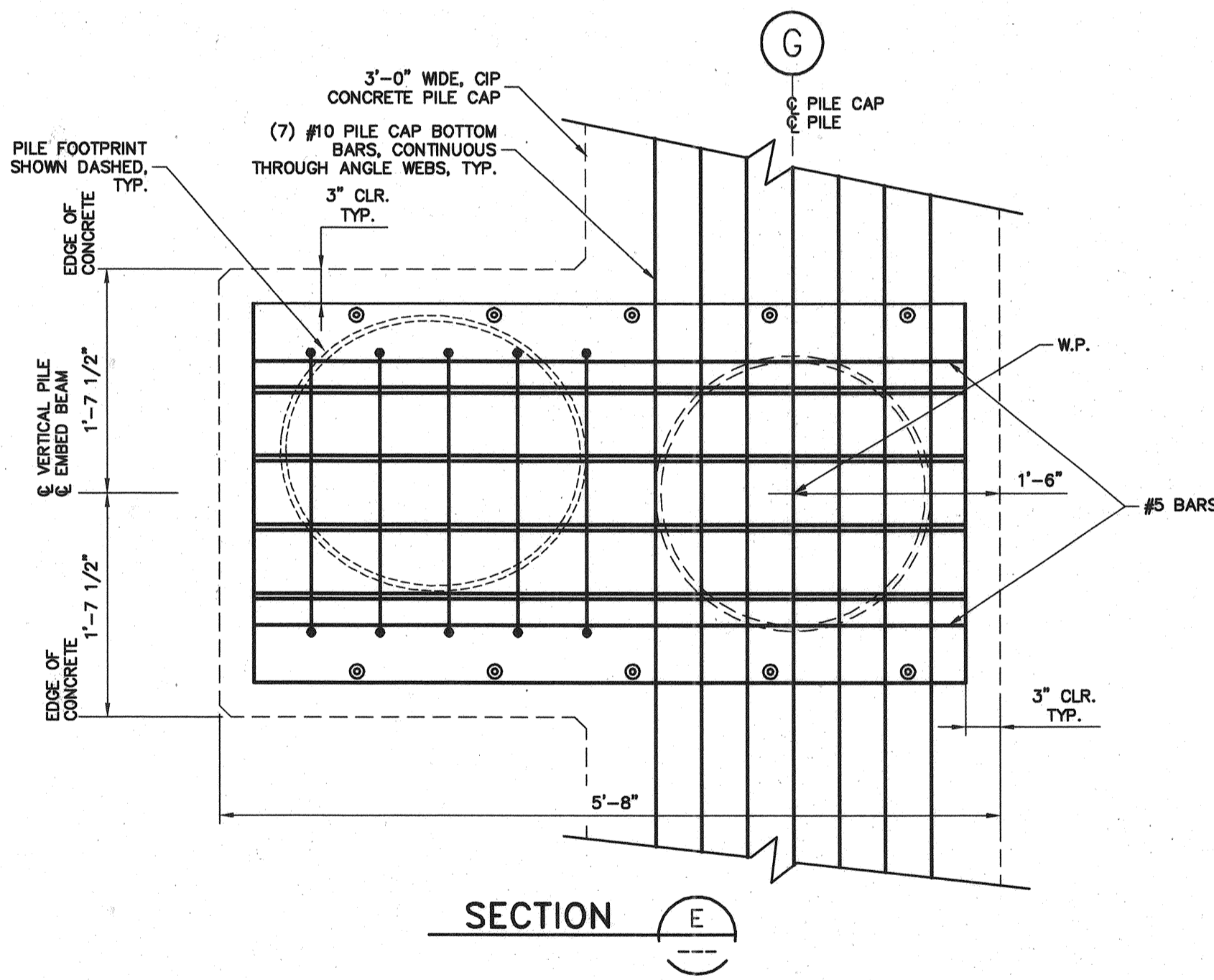
SECTION C  
W101-A

BAR SIZE	MINIMUM LAP SPLICE LENGTH	HOOK LENGTH
#4	3'-4"	8"
#5	5'-2"	10"
#10	8'-6"	1'-10"

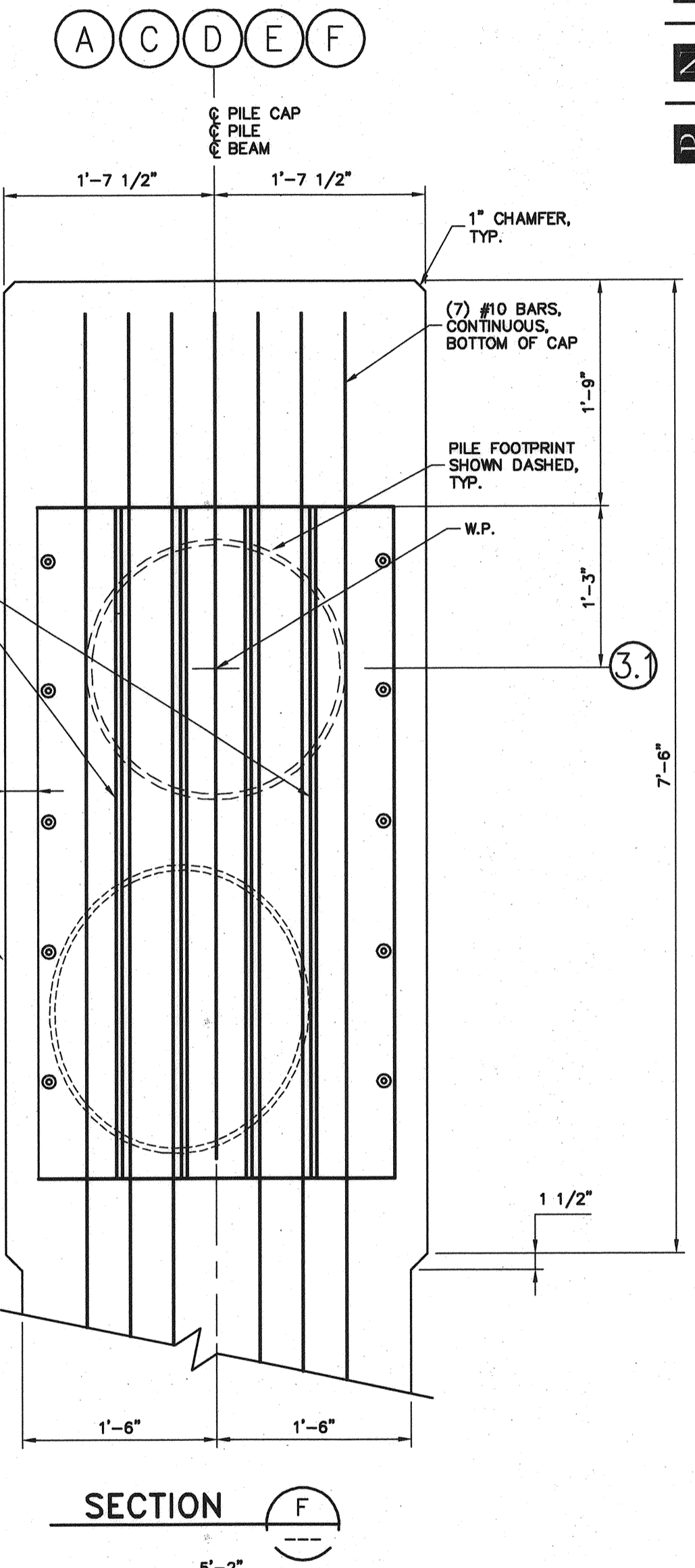
NOTE:  
ALL REBAR SHALL BE EPOXY COATED.  
ALL STEEL SHALL BE GALVANIZED  
UNLESS OTHERWISE NOTE.



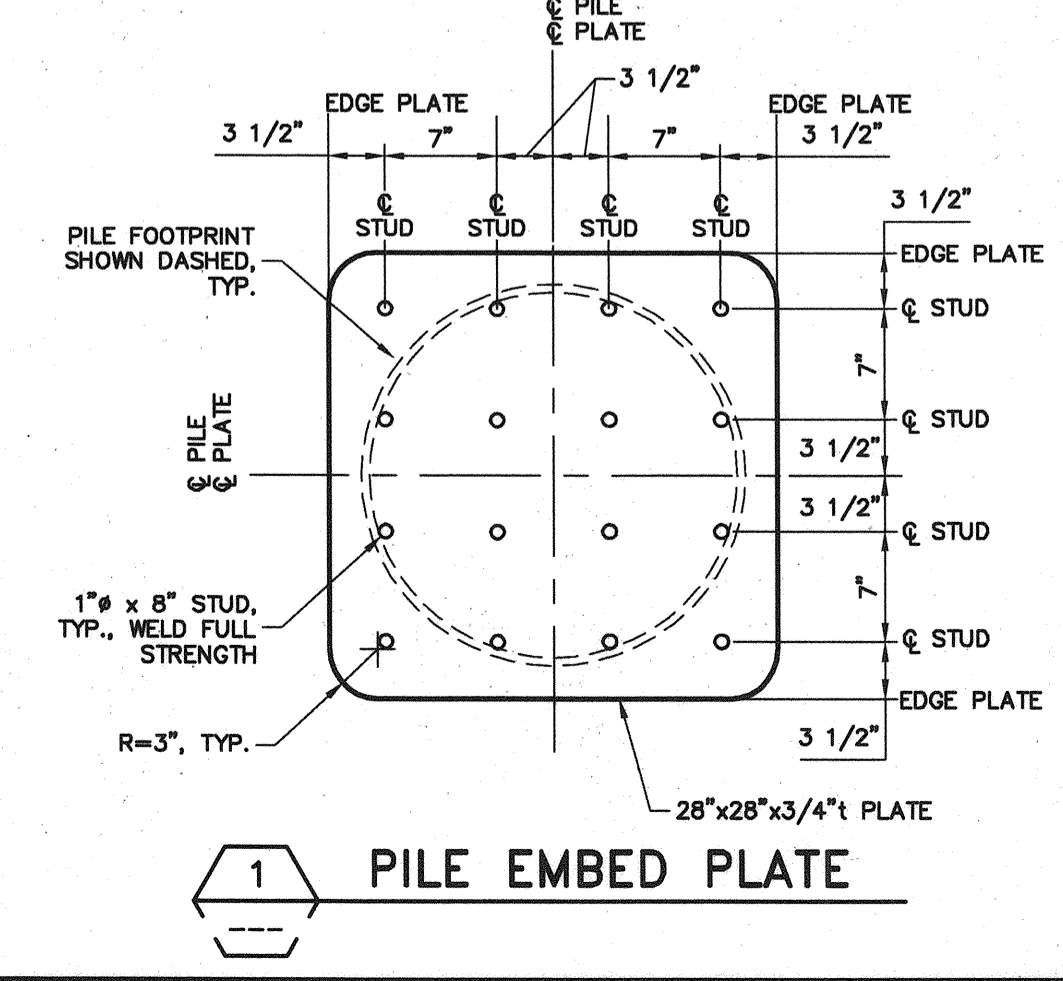
SECTION D



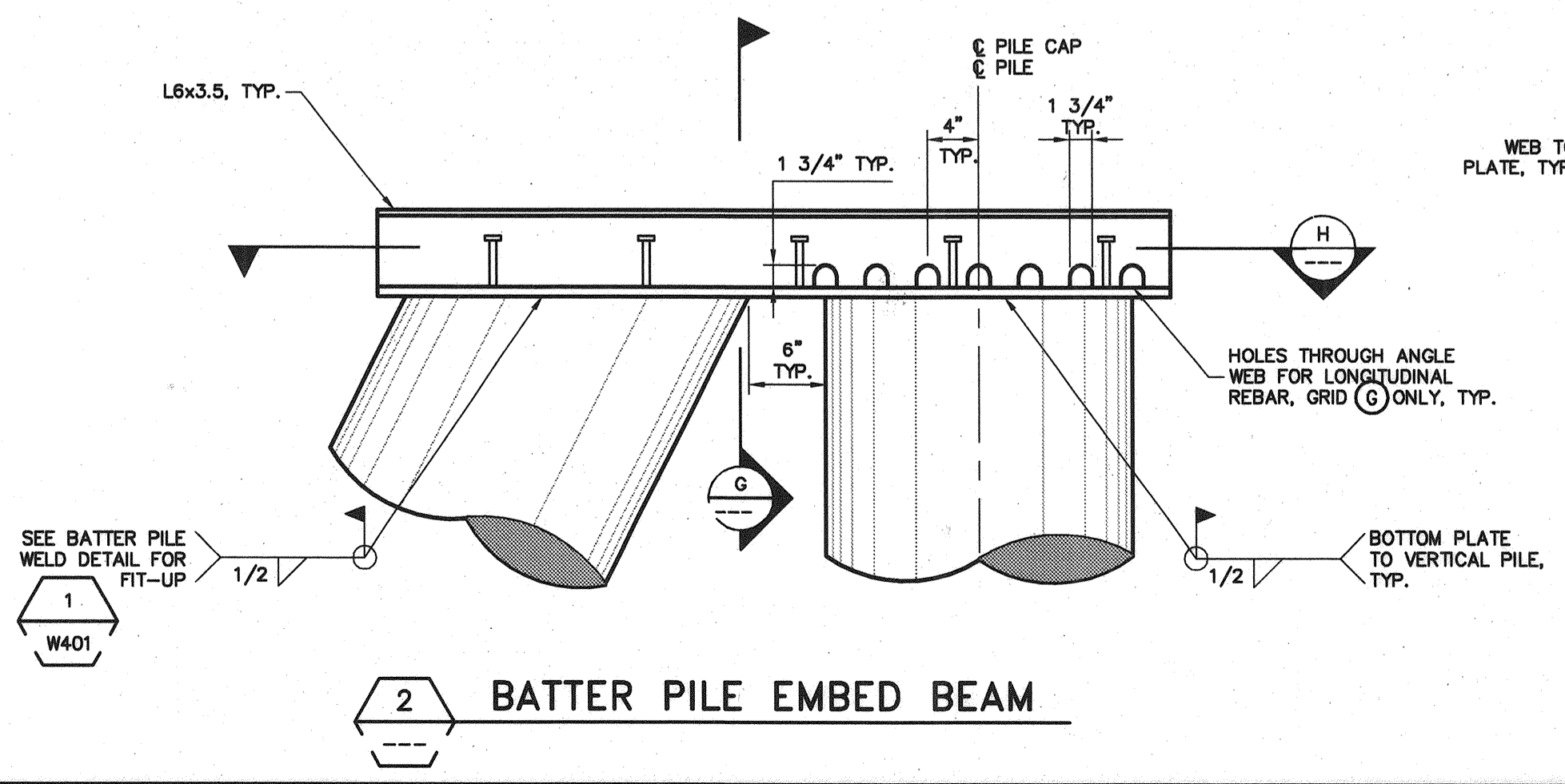
SECTION E



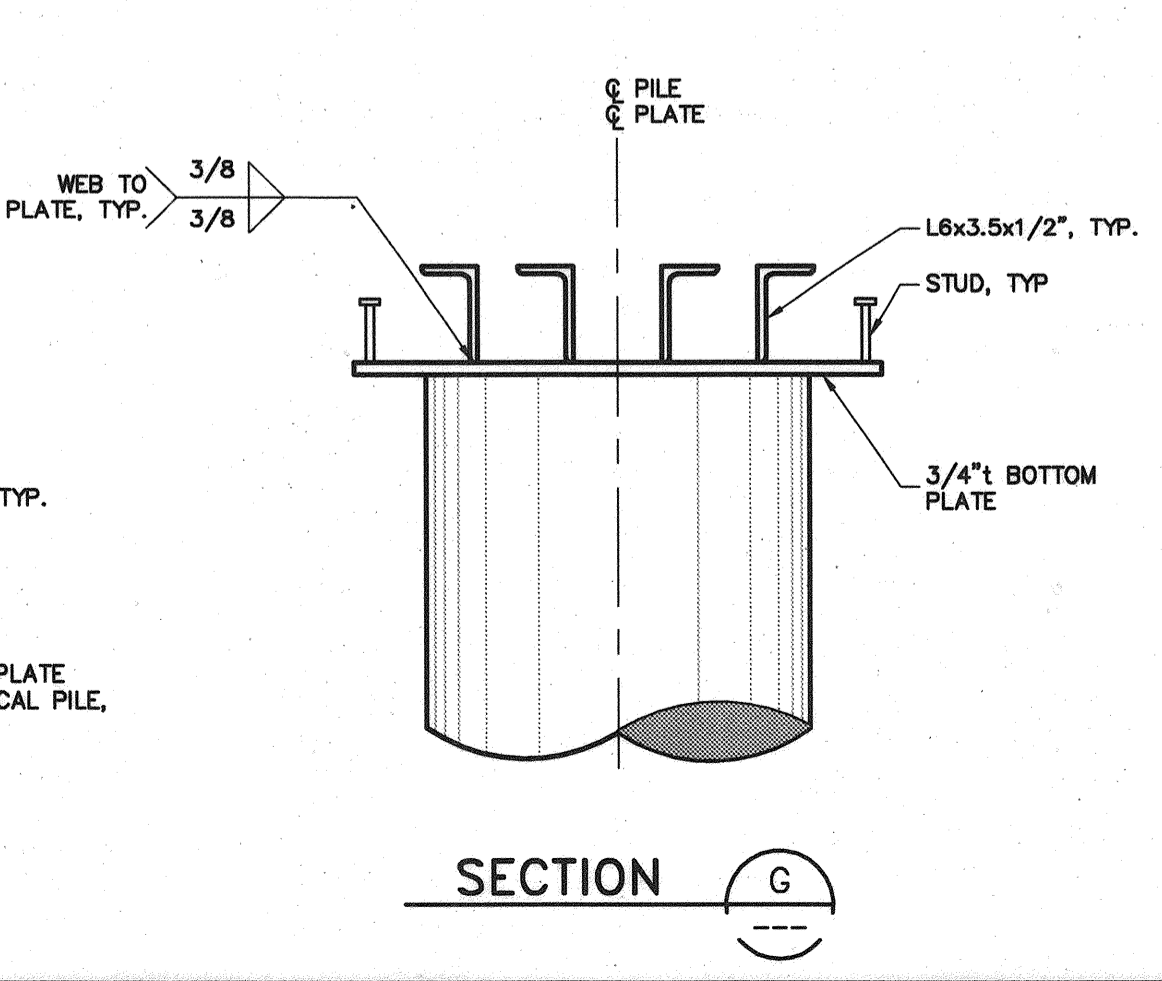
SECTION F



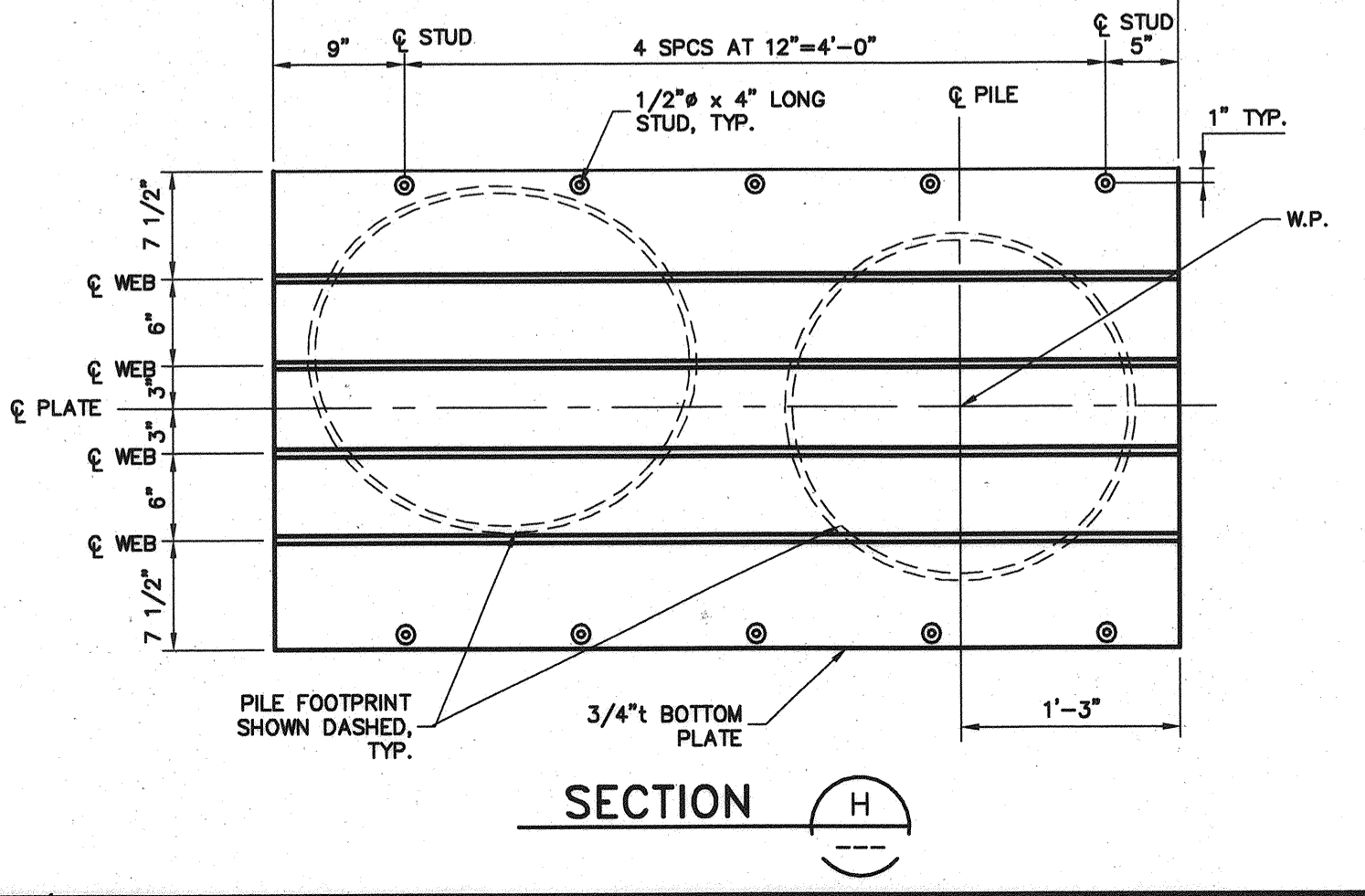
SECTION 1  
PILE EMBED PLATE



SECTION 2  
BATTER PILE EMBED BEAM



SECTION G



SECTION H

811 First Avenue, Suite 570  
Seattle, Washington 98104  
Phone: (206) 624-1387  
Fax: (206) 624-1388  
E-Mail: mail@pnbea.com

**INCORPORATED**  
ENGINEERS

STATE OF MAINE  
DEPARTMENT OF TRANSPORTATION  
PROJECT NUMBER 009215.00  
PIN  
009215.00

DATE	09/07/04
BY	DH DP
PROJ. MANAGER	PAUL POTTLE
DESIGN-DETAILED	RJ
CHECKED-REVIEWED	OT
DESIGN-DETAILED2	
DESIGN-DETAILED3	
REVISIONS 1	
REVISIONS 2	
REVISIONS 3	
REVISIONS 4	
FIELD CHANGES	
SIGNATURE	P.E. NUMBER 12161
DATE	9/16/04

CITY OF PORTLAND  
OCEAN GATEWAY PHASE 1  
PIER A - CAP AND  
PILE CONNECTION DETAILS

W300-A