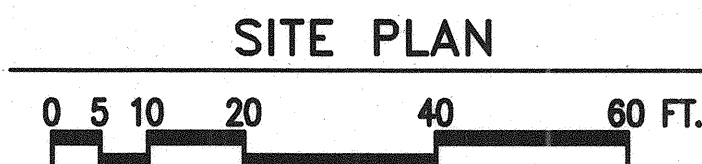
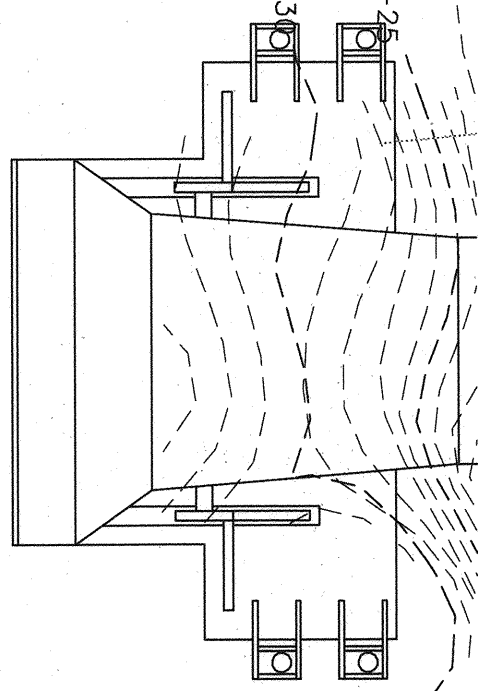


NOTE:  
 FOR NOTES REGARDING BATHYMETRIC DATA  
 ESTABLISHMENT SEE SHEET C101.

NOTE:  
 \* ALIGN PIER A PARALLEL  
 AND PERPENDICULAR TO  
 EXISTING PIER 2.

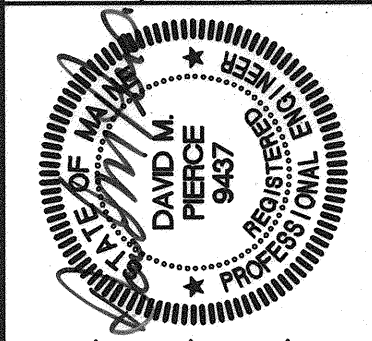


EXISTING TIMBER CONTAINMENT WALL AROUND  
 WRAP MATERIAL. DO NOT DISTURB. CONTRACTOR  
 RESPONSIBLE TO REPAIR IF ANY DAMAGE OCCURS.

811 First Avenue, Suite 570  
 Seattle, Washington 98104  
 Phone: 206.461.1887  
 Fax: 206.461.1888  
 E-Mail: mad@pdpes.com

**D** CONSULTING  
**E** ENGINEERS  
**I** Incorporated

STATE OF MAINE  
 DEPARTMENT OF TRANSPORTATION  
 PROJECT NUMBER 009215.00  
 PIN  
 009215.00



SIGNATURE  
 P.E. NUMBER  
 DATE

| DATE     | BY | PROJ. MANAGER     | PAUL POTLIE |
|----------|----|-------------------|-------------|
| 09/01/04 | DH | DESIGN-DETAILED   | RJ          |
| 09/01/04 | DP | CHECKED-REVIEWED  | DT          |
|          |    | DESIGN2-DETAILED2 |             |
|          |    | DESIGN3-DETAILED3 |             |
|          |    | REVISIONS 1       |             |
|          |    | REVISIONS 2       |             |
|          |    | REVISIONS 3       |             |
|          |    | REVISIONS 4       |             |
|          |    | FIELD CHANGES     |             |

CITY OF PORTLAND  
 OCEAN GATEWAY PHASE 1  
 PIER A  
 SITE PLAN

W100-A  
 ALT.  
 89 OF 288

ALTERNATE No. 8