

COATING
 ALL RO-RO RAMP COMPONENTS SHALL BE PAINTED UNLESS SPECIFICALLY NOTED BELOW. (SEE SPECIFICATIONS)

ALL STAINLESS STEEL, GALVANIZED COMPONENTS AND MACHINED SURFACES SHALL NOT BE PAINTED

GALVANIZED
 GRATING W/ GUARDRAIL MOUNTING ANGLE
 GUARDRAILS
 TOWER
 TRANSITION PLATE
 PILE HOOPS
 BEARING PLATE
 PILE CAP ASSEMBLY

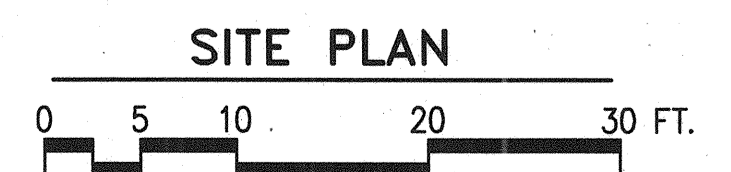
NON-SKID
 APRON
 TRANSITION DECK PLATE
 TRANSITION PLATE AT ABUTMENT

FLOATS
 FLOATS FOR RO-RO RAMP SHALL BE COATED WITH SAME PAINT SYSTEM AS PIER 2 BERTH 2 FLOAT. (SEE SPECIFICATIONS)

MACHINED SURFACES
 ALL MACHINED SURFACES SHALL BE GREASED WITH AN APPROVED PRODUCT.

NOTE: BRIDGE SHOWN WITH MAIN BRIDGE SECTION IN FLAT POSITION.

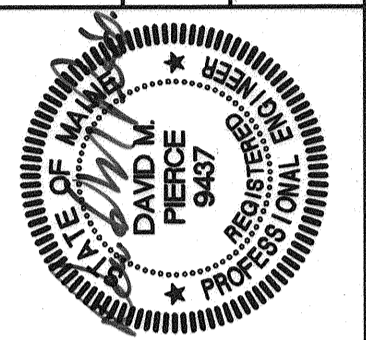
NOTE: SEE PILE SCHEDULE, SHEET W400, FOR PILE INFORMATION.



9/30/04
 Filename: 20343802-R-W100-100

INCORPORATED
CONSULTING ENGINEERS
 811 First Avenue, Suite 570
 Seattle, Washington 98104
 Phone: (206) 462-8777
 Fax: (206) 462-1388
 E-Mail: mail@ipodea.com

STATE OF MAINE
 DEPARTMENT OF TRANSPORTATION
 PROJECT NUMBER 009215.00
 PIN
 009215.00



SIGNATURE
 P.E. NUMBER
 DATE

PROJ. MANAGER	PAUL POTLIE	DATE
DESIGN-DETAILED	TN	09/01/04
CHECKED-REVIEWED	RJ	09/01/04
DESIGN-2-DETAILED		
DESIGN-3-DETAILED		
REVISIONS 1		
REVISIONS 2		
REVISIONS 3		
REVISIONS 4		
FIELD CHANGES		

CITY OF PORTLAND
 OCEAN GATEWAY PHASE 1
 RO-RO RAMP
 SITE PLAN

W100-R