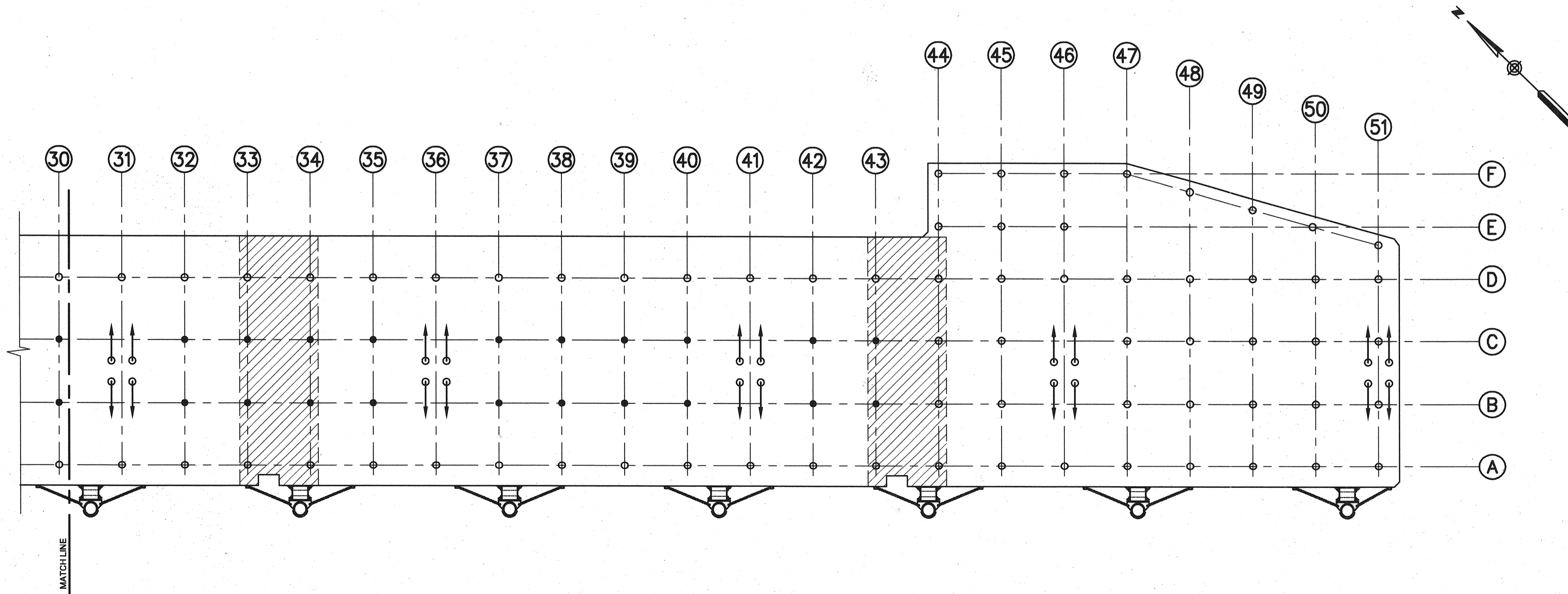


PARTIAL PILE PLAN
 15 10 5 0 15 30 FT.



PARTIAL PILE PLAN
 15 10 5 0 15 30 FT.

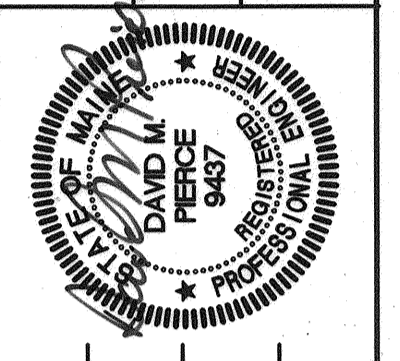
LEGEND

- PP 14" x 0.375" CONCRETE FILLED (70 TOTAL)
- PP 16" x 0.375" CONCRETE FILLED (129 TOTAL)
- ⊙ PP 16" x 0.375" CONCRETE FILLED BATTERED 5:12 (52 TOTAL)
- ▨ UTILITY CROSS-OVER LOCATION

811 First Avenue, Suite 570
 Seattle, Washington 98104
 Phone: (206) 624-1387
 Fax: (206) 624-1388
 E-Mail: mail@prbca.com

P N D
 Incorporated

STATE OF MAINE
 DEPARTMENT OF TRANSPORTATION
 PROJECT NUMBER 009215.00
 PIN 009215.00



SIGNATURE
 P.E. NUMBER 9437
 DATE 10/6/04

PROJ. MANAGER	PAUL POTLITZ	DATE	09/01/04
DESIGN	DP	BY	DP
CHECKED	DP	DATE	09/01/04
DESIGN2	DP		
DESIGN3	DP		
REVISIONS			
REVISIONS 1			
REVISIONS 2			
REVISIONS 3			
REVISIONS 4			
FIELD CHANGES			

CITY OF PORTLAND
 OCEAN GATEWAY PHASE 1
 PIER 2 - EXISTING PILE PROTECTION
 PILE PLAN

W100-P
 67 OF 288