

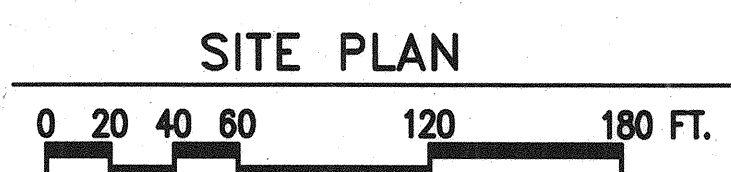
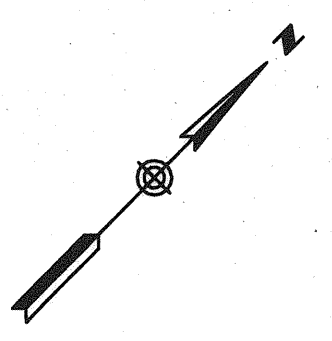
NOTE:
FOR NOTES REGARDING BATHYMETRIC
DATA ESTABLISHMENT SEE SHEET C101.
ALL ITEMS TO BE INCLUDED AS ALTERNATE
No. 4 UNLESS OTHERWISE NOTED.

TIDAL ELEVATION

HIGHEST OBSERVED WATER LEVEL (02/07/1978)	+14.17'
MEAN HIGHER HIGH WATER (MHHW)	+9.91'
MEAN HIGH WATER (MHW)	+9.45'
MEAN LOW WATER (MLW)	+0.34'
MEAN LOWER LOW WATER (MLLW)	0.00'
LOWEST OBSERVED WATER LEVEL (11/30/1955)	-3.41'

BID ALTERNATES

ALTERNATE No. 4	PIER 2 BERTH 2
ALTERNATE No. 8	RELOCATE EXISTING UTILITY BRIDGE
ALTERNATE No. 10	PIER 2 FENDER PILES F1a - F1g



811 First Avenue, Suite 570
Seattle, Washington 98104
Phone: (206) 624-1387
Fax: (206) 624-1388
E-Mail: mail@pneca.com

PN **DN** **EN** **INCORPORATED**

CONSULTING ENGINEERS

STATE OF MAINE
DEPARTMENT OF TRANSPORTATION

PROJECT NUMBER 009215.00

PIN 009215.00

SIGNATURE: *Paul Pottle*
P.E. NUMBER: 9437
DATE: 12/6/04

PROJ. MANAGER	PAUL POTTLE	DATE	BY	DATE
DESIGN-DETAILED	TWB	09/07/04	DH	
CHECKED-REVIEWED	RJ	09/07/04	DP	
DESIGN2-DETAILED2				
DESIGN3-DETAILED3				
REVISIONS 1				
REVISIONS 2				
REVISIONS 3				
REVISIONS 4				
FIELD CHANGES				

CITY OF PORTLAND
OCEAN GATEWAY PHASE 1
MARINE/WATER COMPONENTS
SITE PLAN

W100
ALT.
62 OF 288