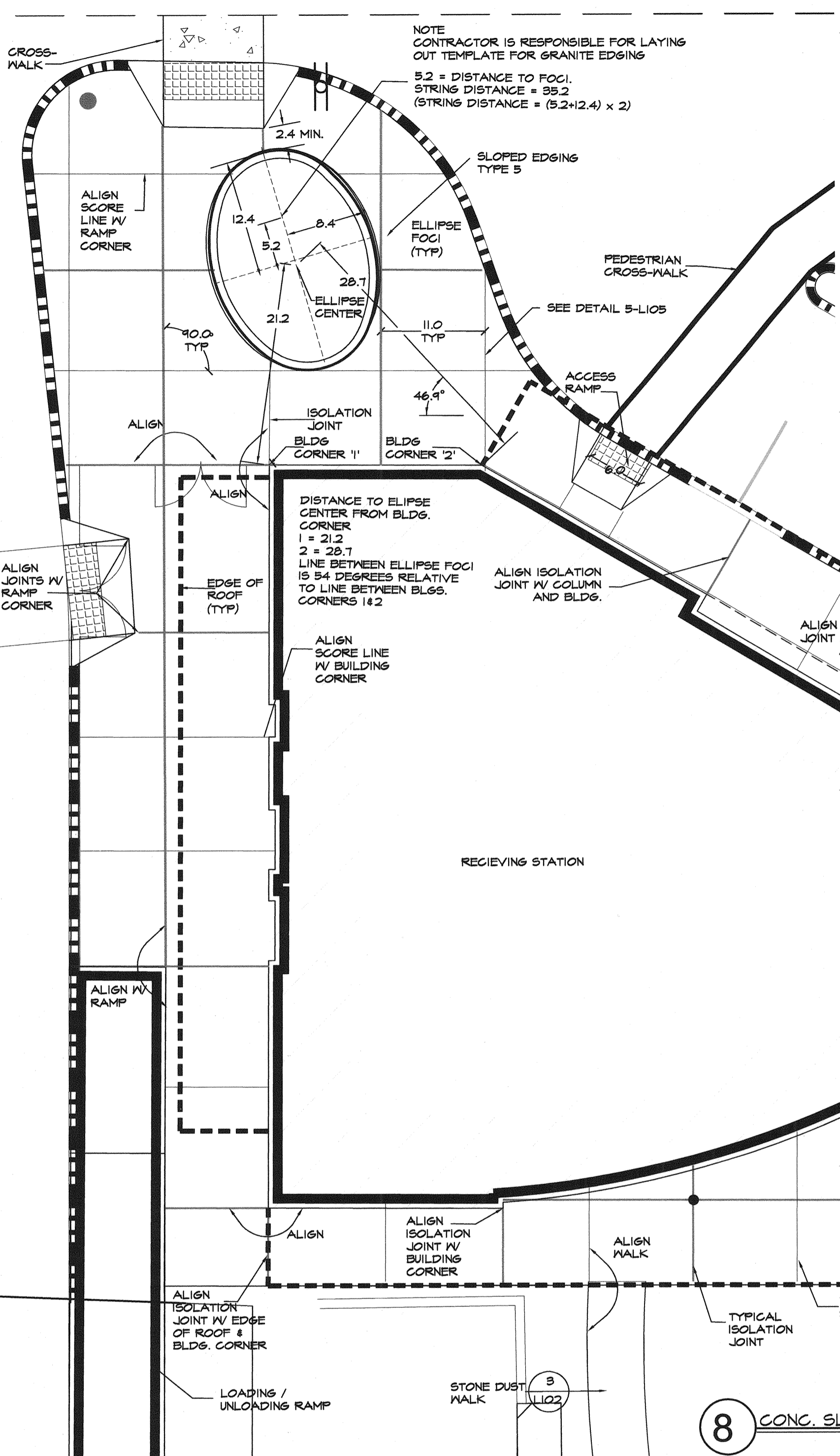
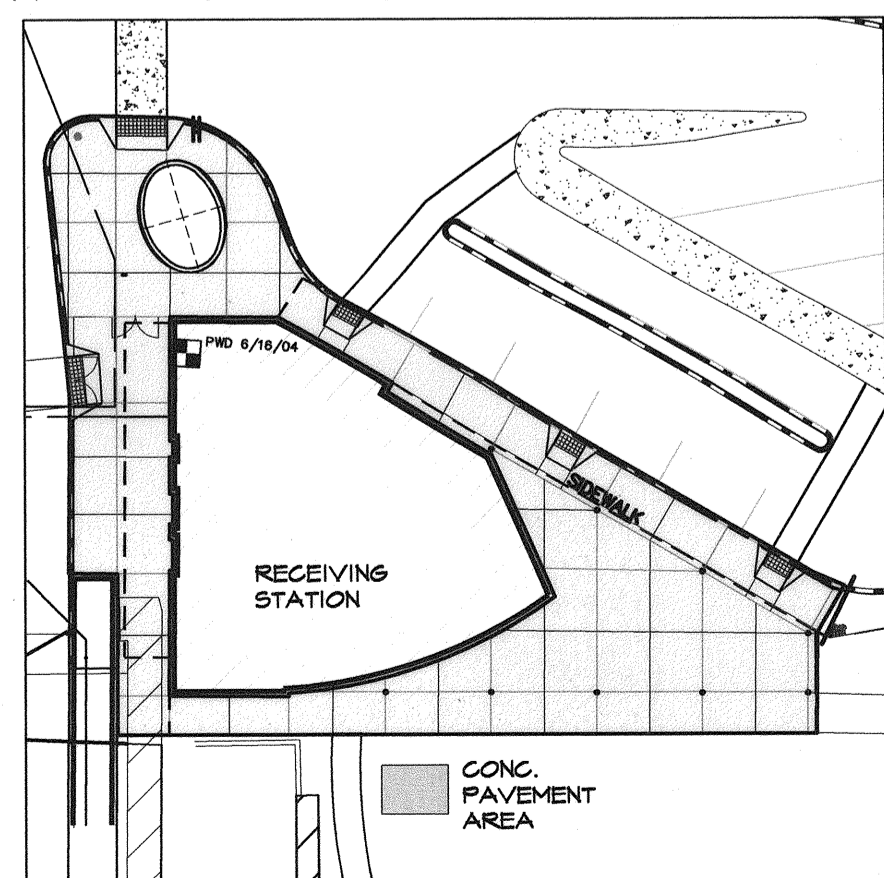


Filename:

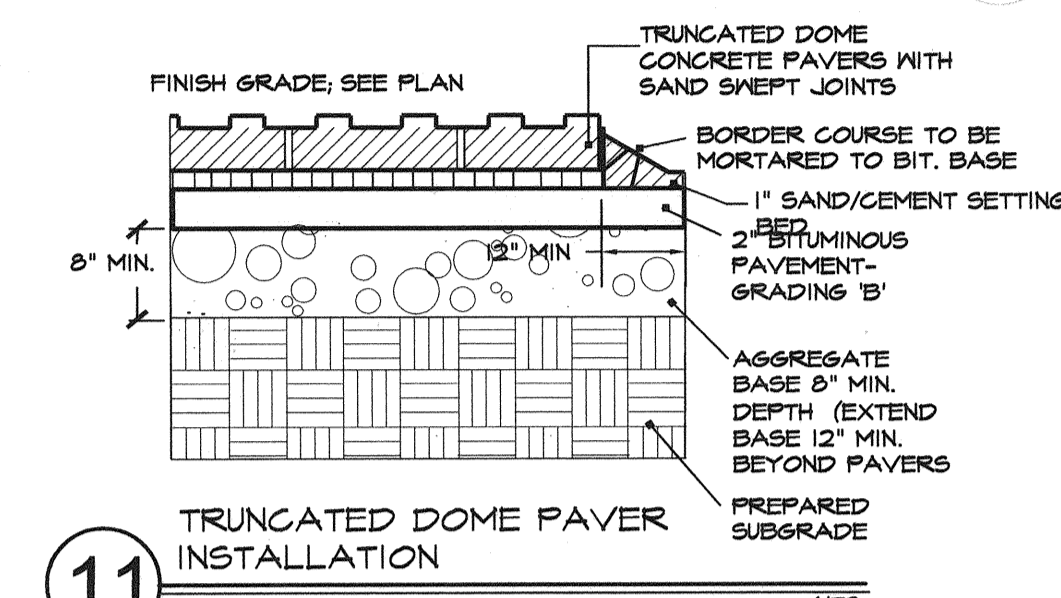
7 CONG. PAVEMENT AREA (BASE BID)



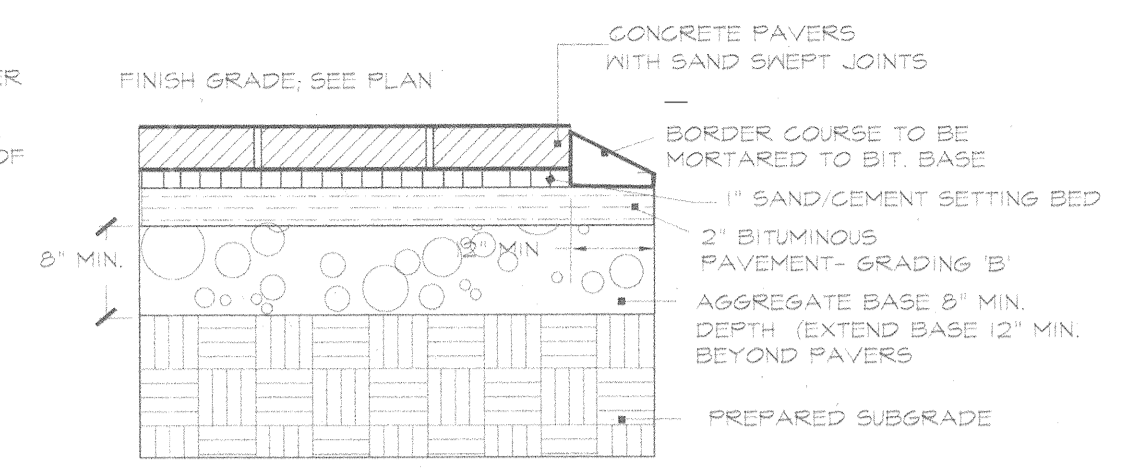
8 CONG. SLAB PLAZA LAYOUT (BASE BID)



NOTE: 3 STACK BOND COURSES OF PAVEMENT COLOR 'A' SHOULD RUN ALONG EDGE OF BUILDING WITHIN PAVED AREA. A SOLDIER COURSE OF PAVEMENT 'A' SHOULD RUN ALONG PERIMETER OF PLANTER BED. 3 STACK BOND COURSES OF PAVEMENT COLOR 'A' SHOULD RUN ALONG ENTIRE PERIMETER OF PAVED AREA AND BETWEEN THE 3 RUNNING BOND FIELD COURSES OF DIFFERENT ORIENTATION AS SHOWN ON PLAN.

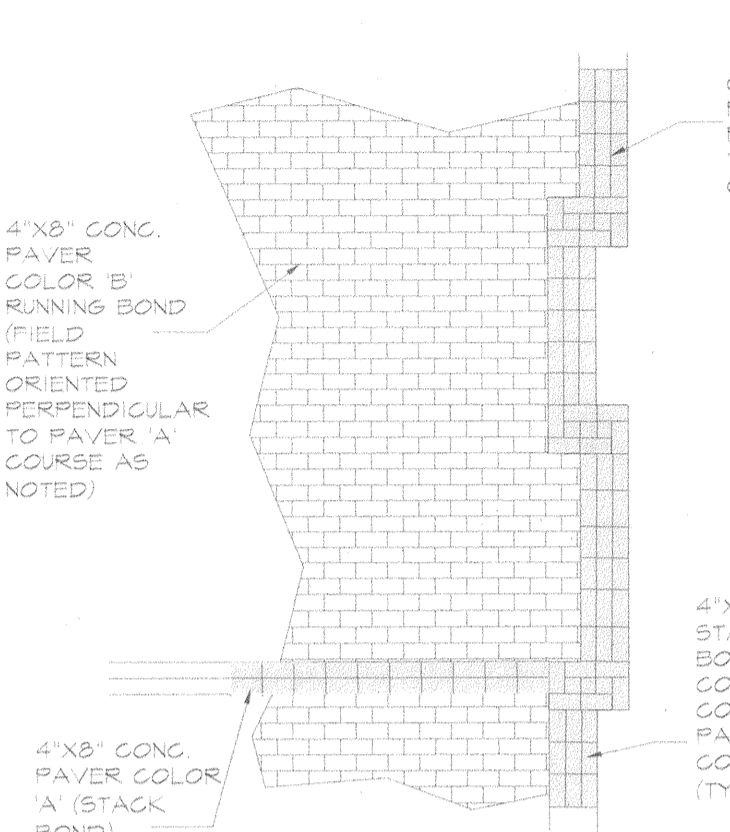


11 TRUNCATED DOME PAVEMENT INSTALLATION

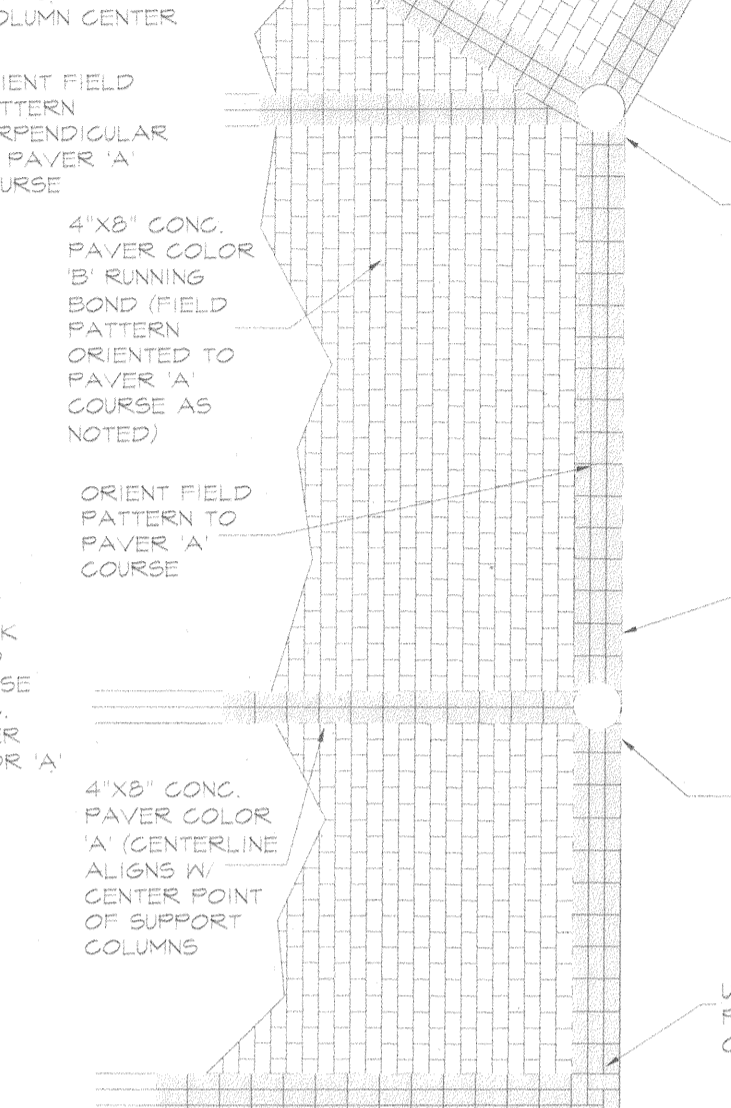


9 TYPICAL CONCRETE PAVEMENT INSTALLATION (ADD ALT. #13)

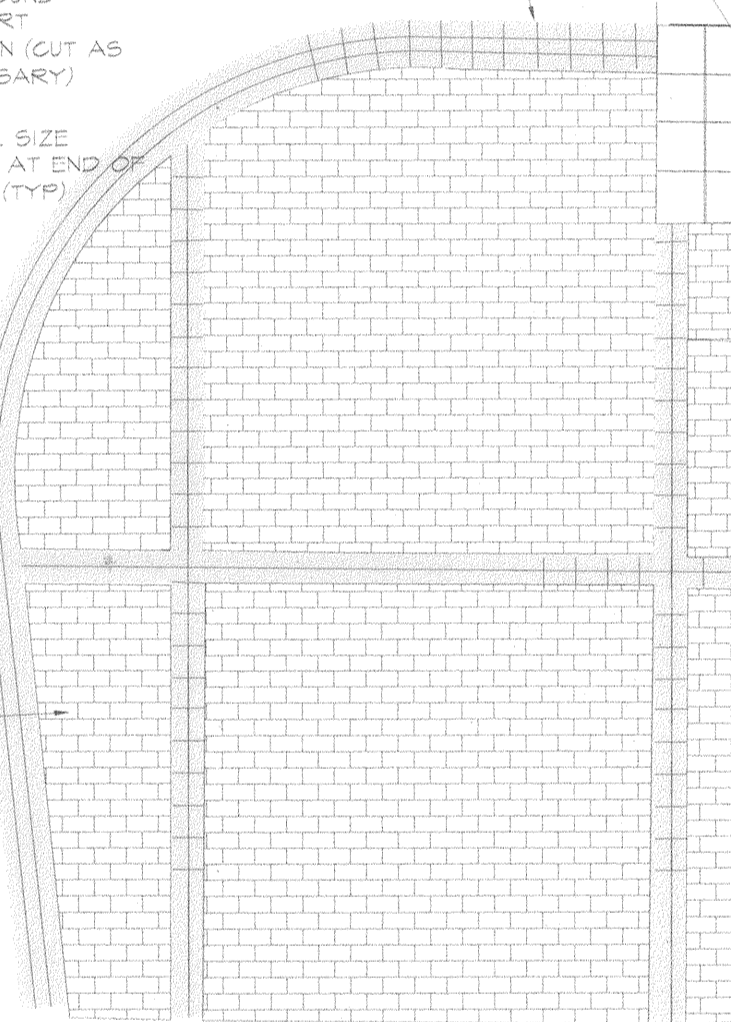
10 PAVEMENT PATTERN (ADD ALT. #13)



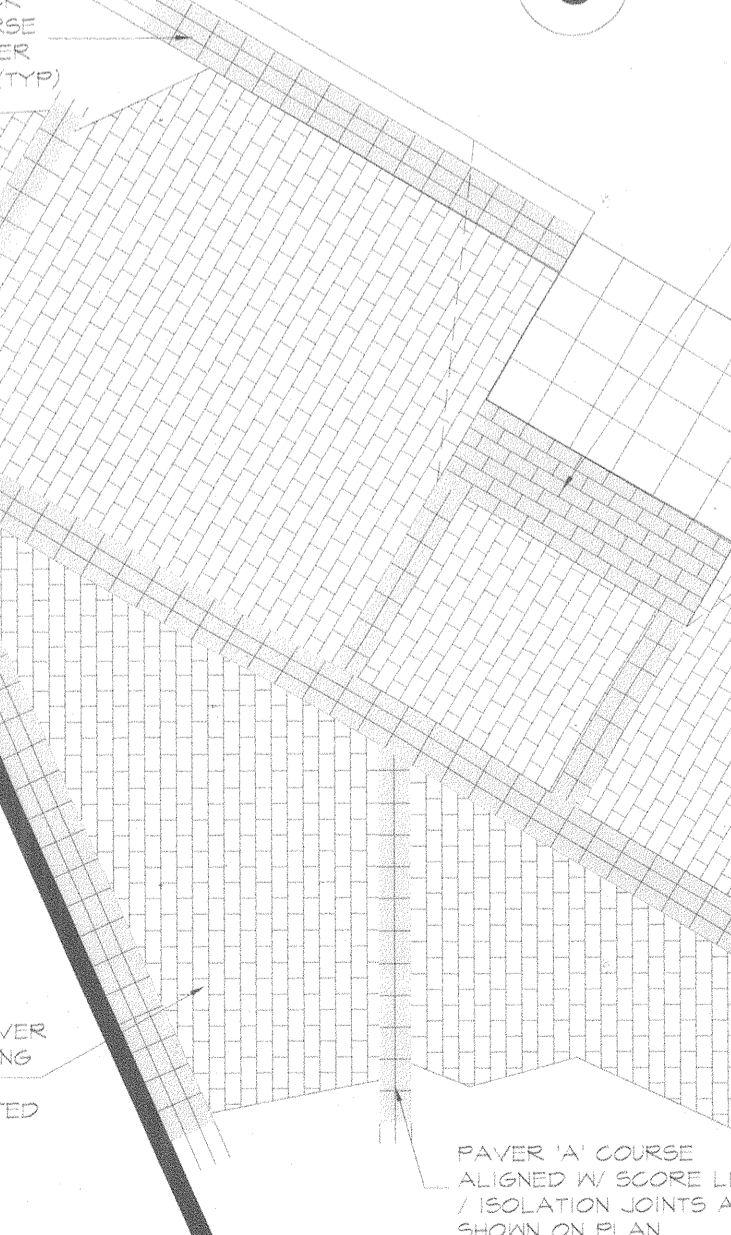
1 PAVEMENT PATTERN (ADD ALT. #13)



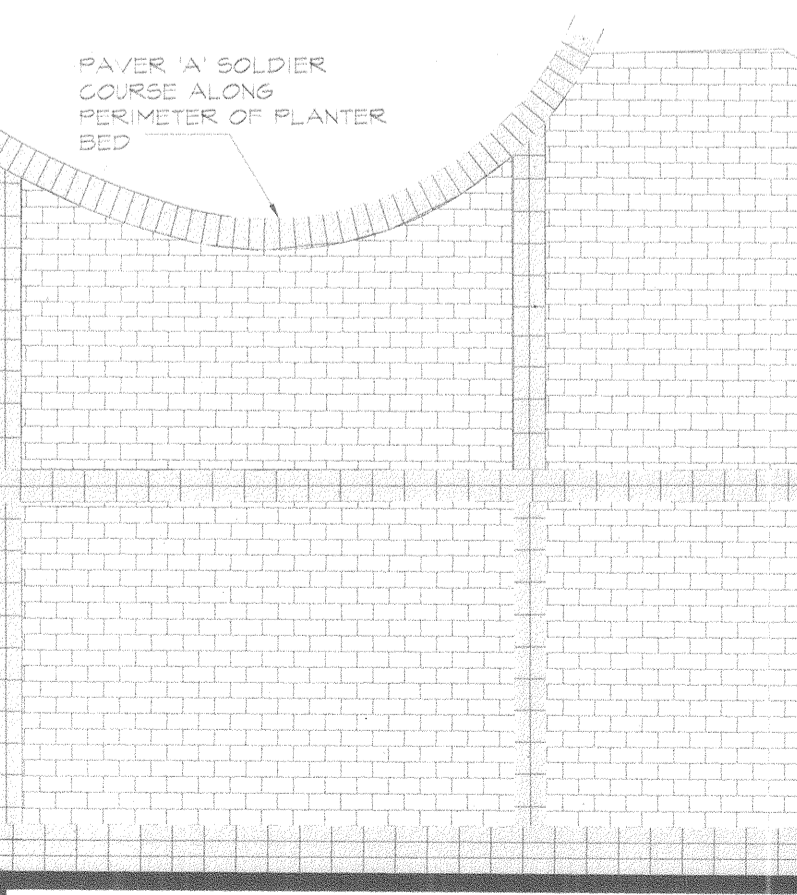
3 PAVEMENT PATTERN (ADD ALT. #13)



4 PAVEMENT PATTERN (ADD ALT. #13)



5 PAVEMENT PATTERN (ADD ALT. #13)



CARROLL ASSOCIATES
75 MARKET STREET PORTLAND, ME 04101
207.772.1552 carroll@carrollme.com

STATE OF MAINE
DEPARTMENT OF TRANSPORTATION
PROJECT NUMBER 009215.00
PIN 009215.00

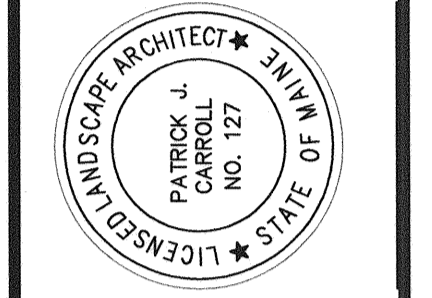


Table with columns for PROJ. MANAGER, DESIGN-REVIEWED, DESIGN-DETAILED, REVISIONS, and DATE. Includes signature and date of Patrick J. Carroll.

CITY OF PORTLAND
OCEAN GATEWAY PHASE 1
RECEIVING STATION
PAVING ALTERNATES