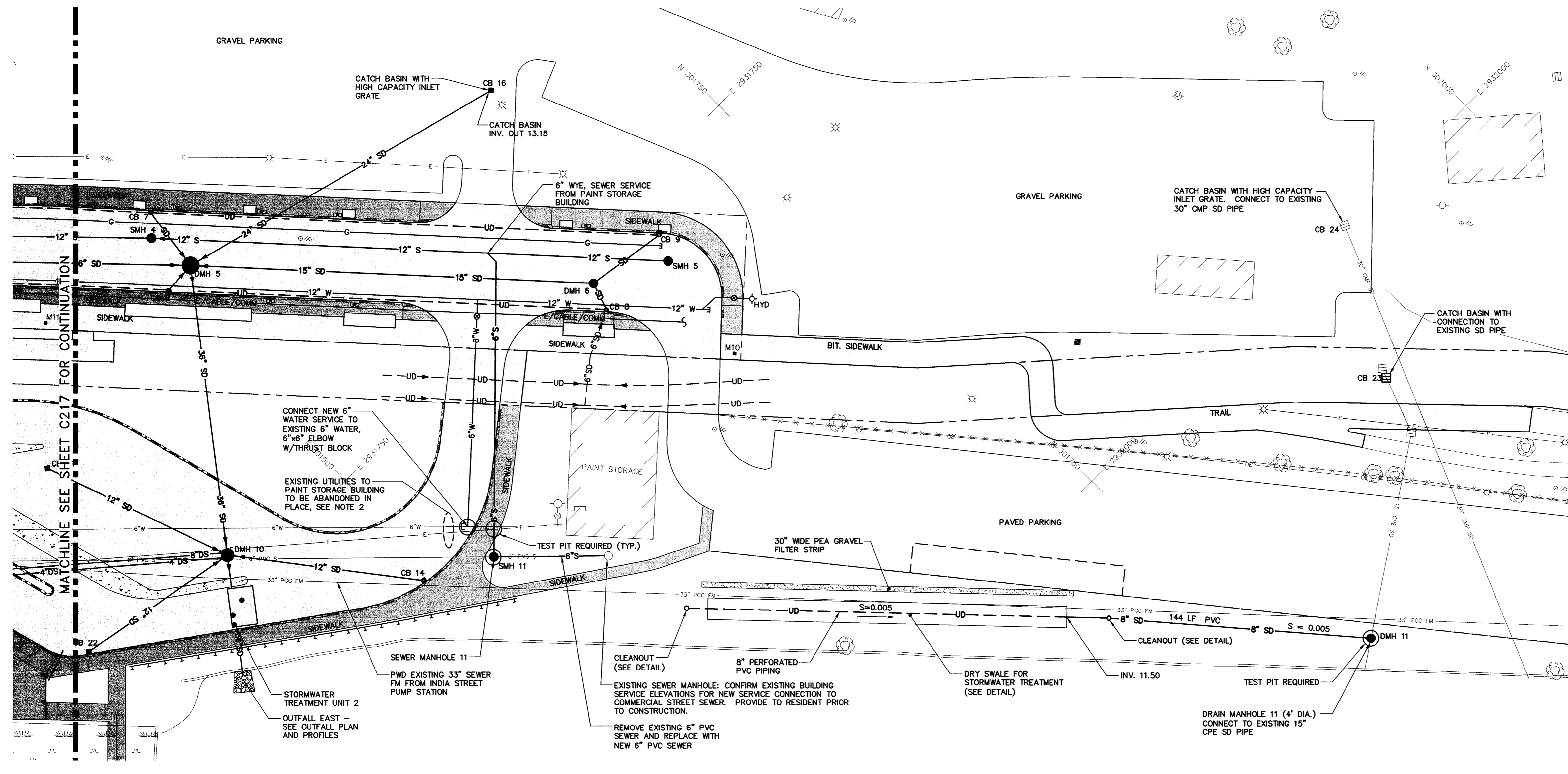
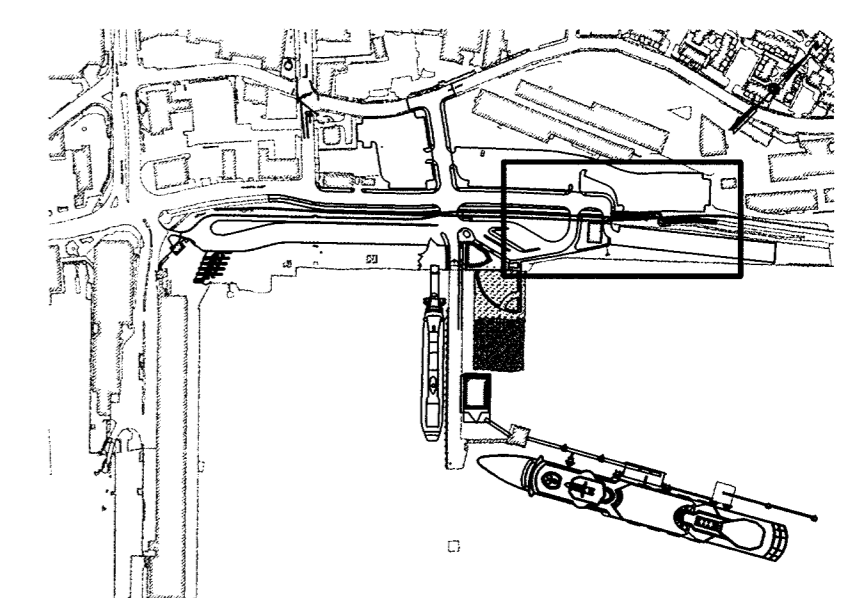


Filename: O:\203438 Ocean Gateway - Phase 1 Engineering\Project Deliverables\2005-01-XX_BID Submittal\CAD Drawings\Civil\20343802-C200F_UTL.dwg, Jan 14, 2005 - 2:57pm



UTILITY EAST PLAN
SCALE: 1" = 30'



CATCH BASIN SCHEDULE

STRUCTURE DESIGNATION	RIM	NORTHING	EASTING
CB 23	16.7	301882.98	2932063.96
CB 24	15.81	301919.77	2931999.48

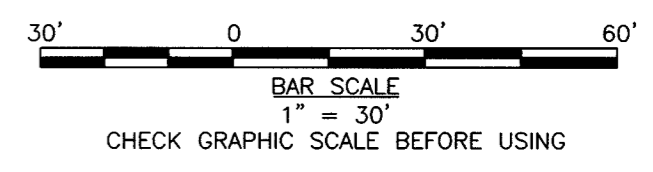
DRAIN MANHOLE SCHEDULE

STRUCTURE DESIGNATION	RIM	NORTHING	EASTING
DMH 11	15.00	301791.22	2932145.48

SEWER MANHOLE SCHEDULE

STRUCTURE DESIGNATION	RIM	NORTHING	EASTING
SMH 11	17.60	301524.52	2931825.03

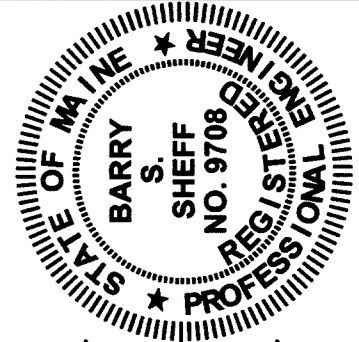
- NOTE:**
- FOR UTILITY INFORMATION ON COMMERCIAL STREET AND HANCOCK STREET, SEE PLAN AND PROFILE SHEETS.
 - WATER AND SEWER SERVICES TO BE ABANDONED IN PLACE. EVACUATE AND CAP WITH END CAP AND RETAINER GLAND.



MLLW = 0.00 FT = -4.57 FT NGVD 1929 (CITY DATUM)

WOODARD & CURRAN
Engineering • Science • Operations
41 Hutchins Drive - Portland, Maine 04102

STATE OF MAINE
DEPARTMENT OF TRANSPORTATION
PROJECT NUMBER 009215.00
PIN 009215.00



PROJ. MANAGER: Paul Pottle
DATE: 01/14/05
BY: JBC, BSS
DESIGN-DETAILED: DAS
CHECKED-REVIEWED: DAS
DESIGN-DETAILED: BSS
DESIGN-DETAILED: BSS
REVISIONS: 1, 2, 3, 4
FIELD CHANGES

SIGNATURE: Barry S. Hoff
DATE: 1/14/05
P.E. NUMBER: 9708

CITY OF PORTLAND
OCEAN GATEWAY PHASE 1

UTILITY PLAN - 2

C218