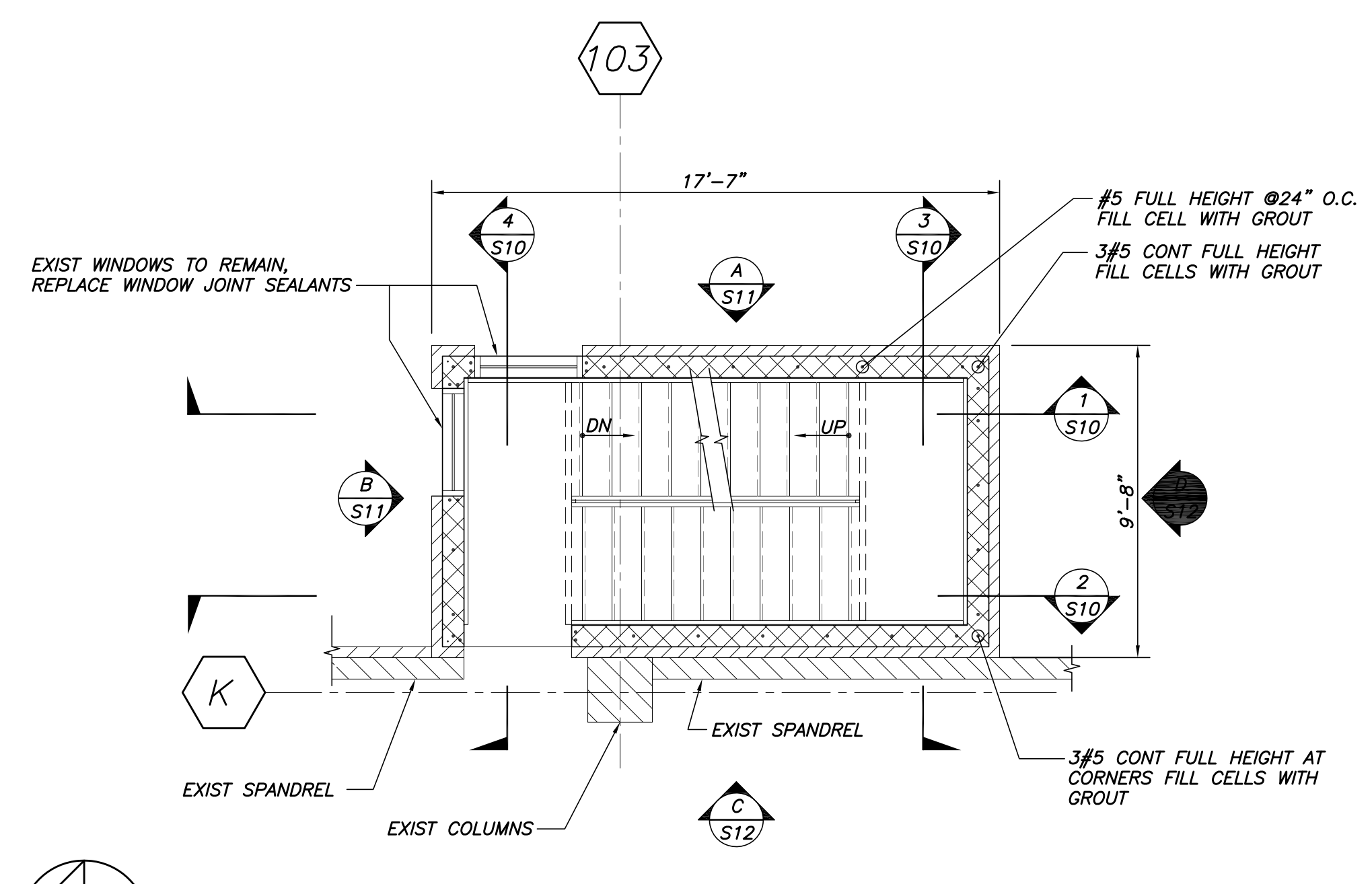


GROUND TIER PLAN
1/4"=1'-0"



TYPICAL TIER PLAN
1/4"=1'-0"

- DEMO NOTES:**
1. SAW CUT AND REMOVE FACE OF CMU SHELL AS NEEDED TO INSTALL REINFORCEMENT.
 2. TEMPORARY REMOVE AND RELOCATE ELECTRICAL CONDUIT/FIRE ALARM SYSTEMS AS NECESSARY FOR ACCESS TO CMU WALLS.
 3. REFERENCE ELEVATIONS FOR EXTENTS OF BRICK MASONRY REMOVAL. REPLACEMENT BRICK MASONRY SHALL MATCH EXISTING.
 4. REMOVE AND RESET DOOR FRAMES TO INSTALL NEW LINTELS.

ADD ALTERNATE #1

Approved	X
Issued For	FOR BID AND PERMIT
Date	11/10/15
Rev. No.	

CASCO BAY PARKING GARAGE
STAIR/ELEVATOR TOWER RESTORATION
PORTLAND, MAINE
STAIR 1 PLANS

Designed	JMM	Scale	AS NOTED
Drawn	RJB	Date	11/10/15
Checked	JMM	Becker Job Number	3604

S9