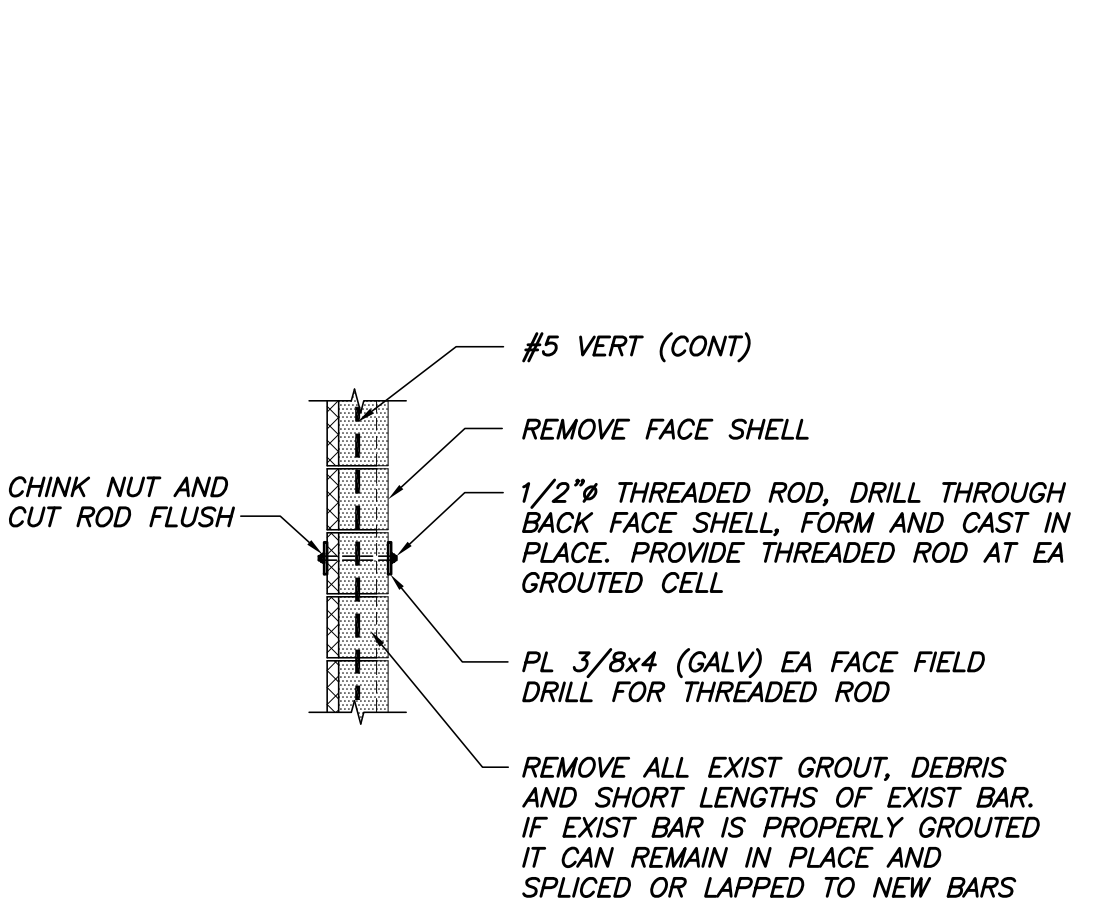


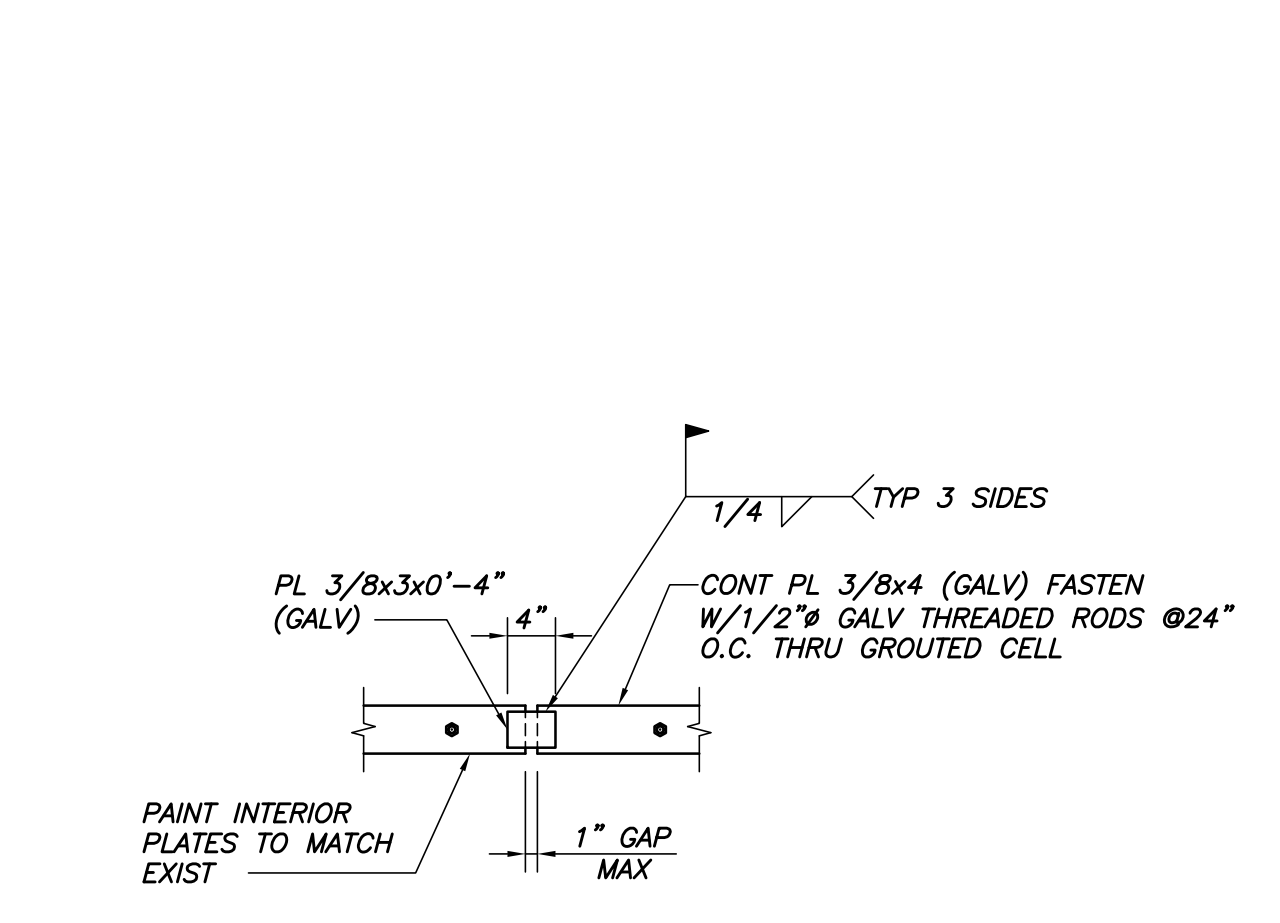
TYPICAL STEEL PLATE BAND TRANSITION
N.T.S.

NOTE:
EXTERIOR WALL SYSTEM NOT SHOWN FOR CLARITY; REF ARCH DRAWINGS

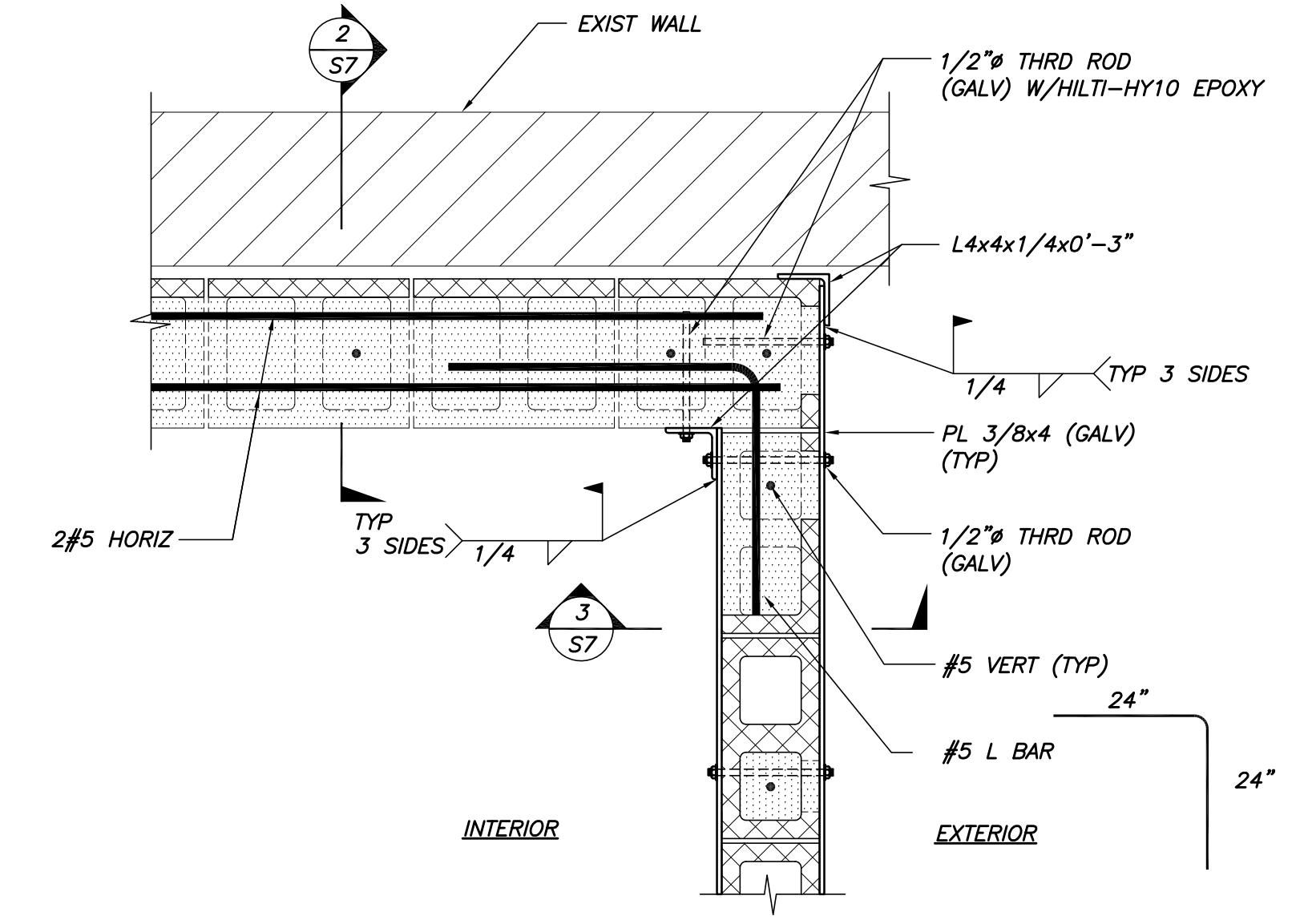


TYPICAL STEEL PLATE BAND
N.T.S.

NOTE:
EXTERIOR WALL SYSTEM NOT SHOWN FOR CLARITY; REF ARCH DRAWINGS

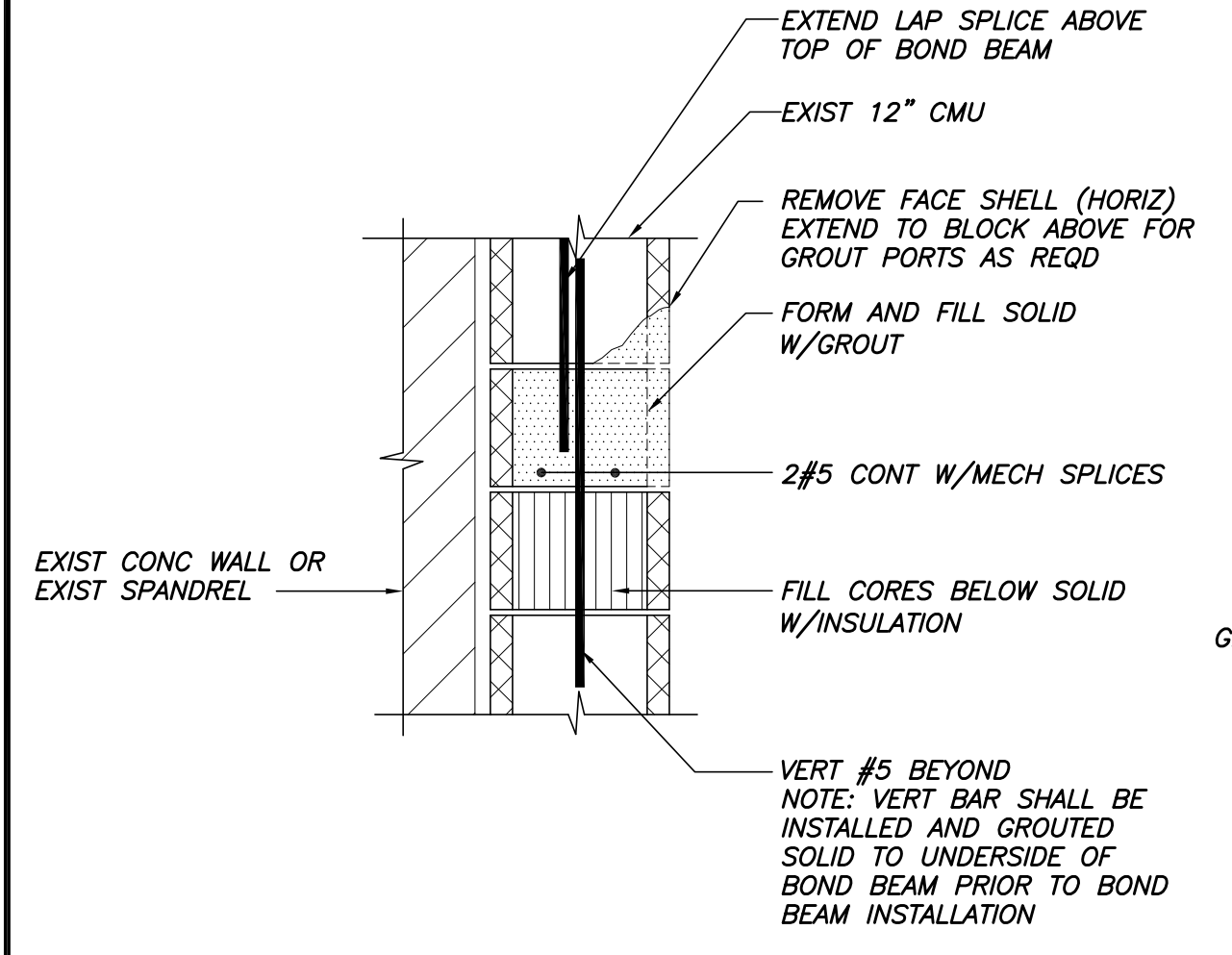


TYPICAL STEEL PLATE BAND SPLICE DETAIL
3/4\"=1'-0\"



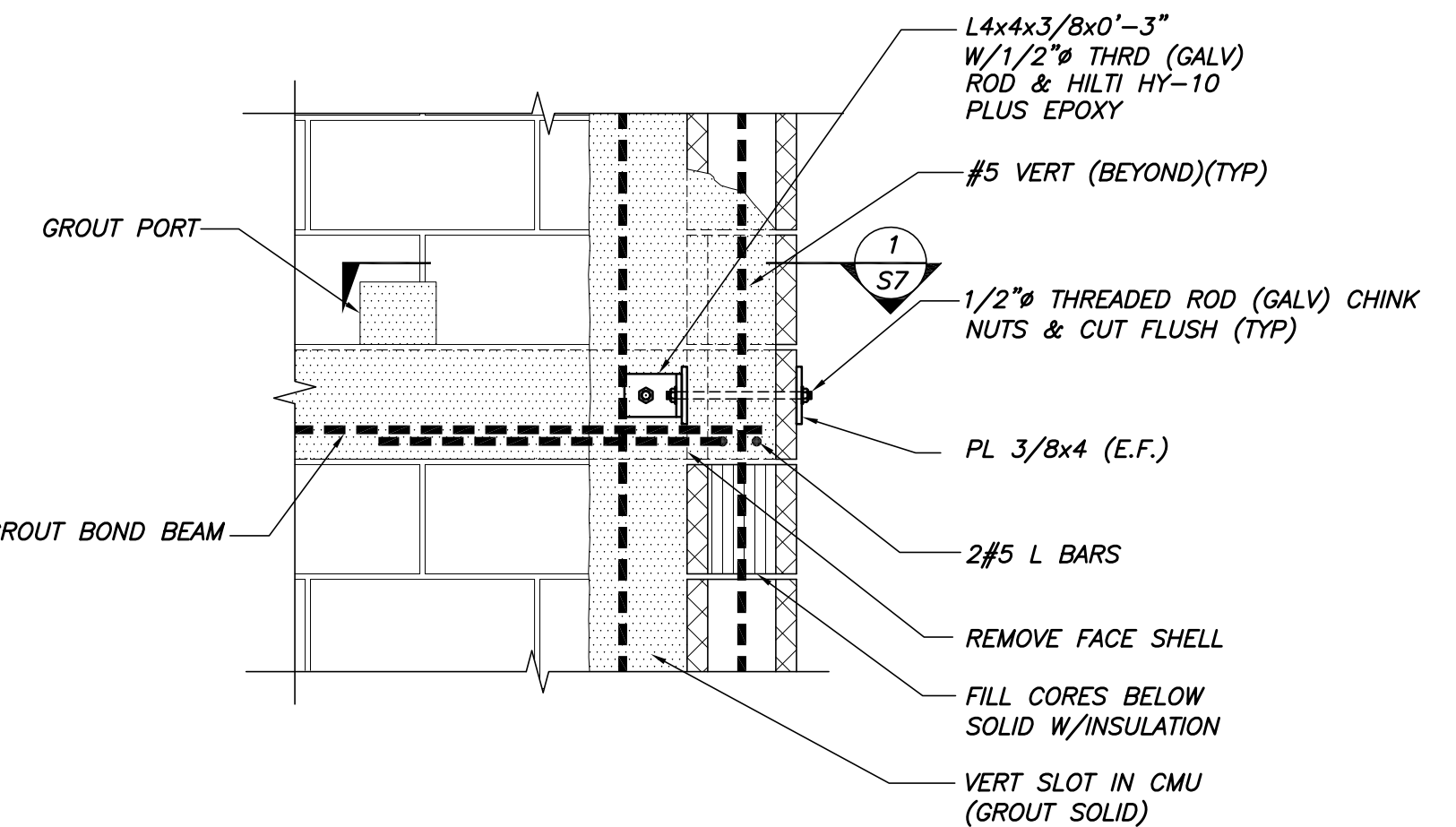
SECTION 1
1\"=1'-0\"

NOTE:
EXTERIOR WALL SYSTEM NOT SHOWN FOR CLARITY; REF ARCH DRAWINGS

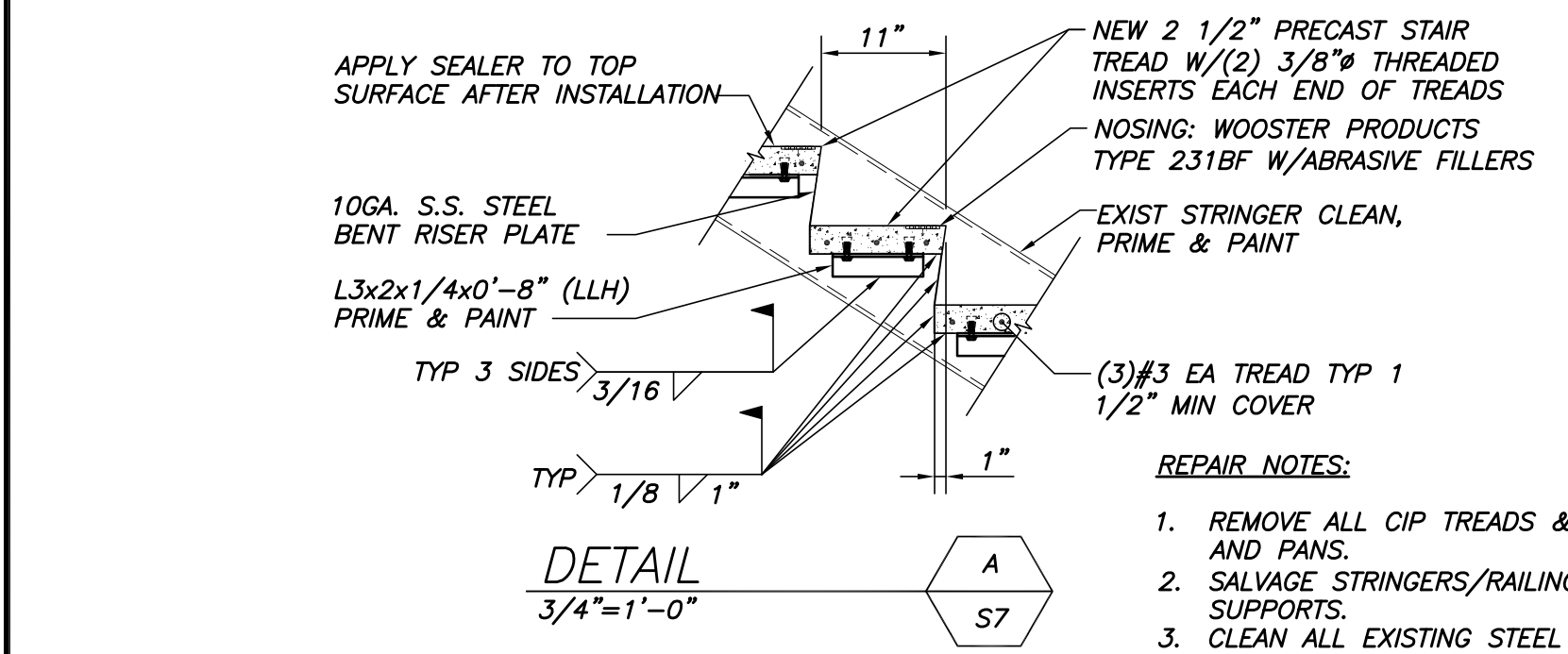


SECTION 2
1\"=1'-0\"

NOTE:
EXIST 12\"/>

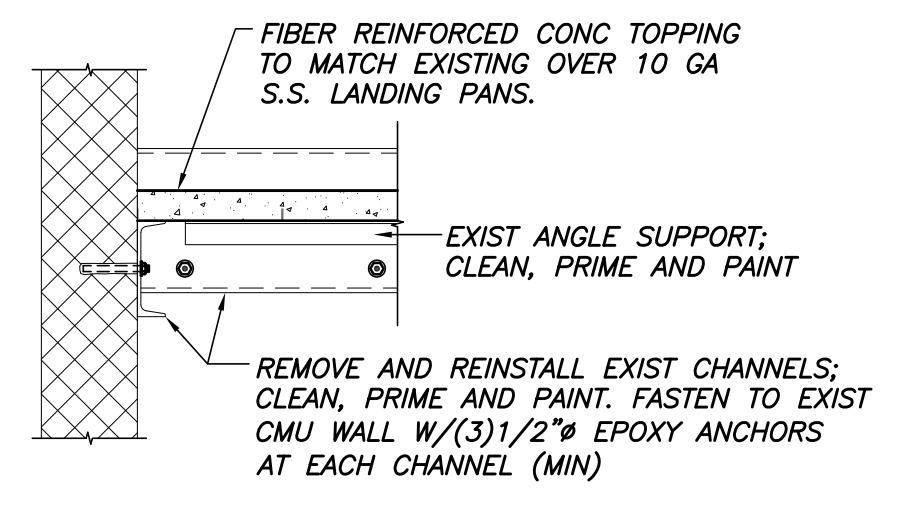


SECTION 3
1\"=1'-0\"

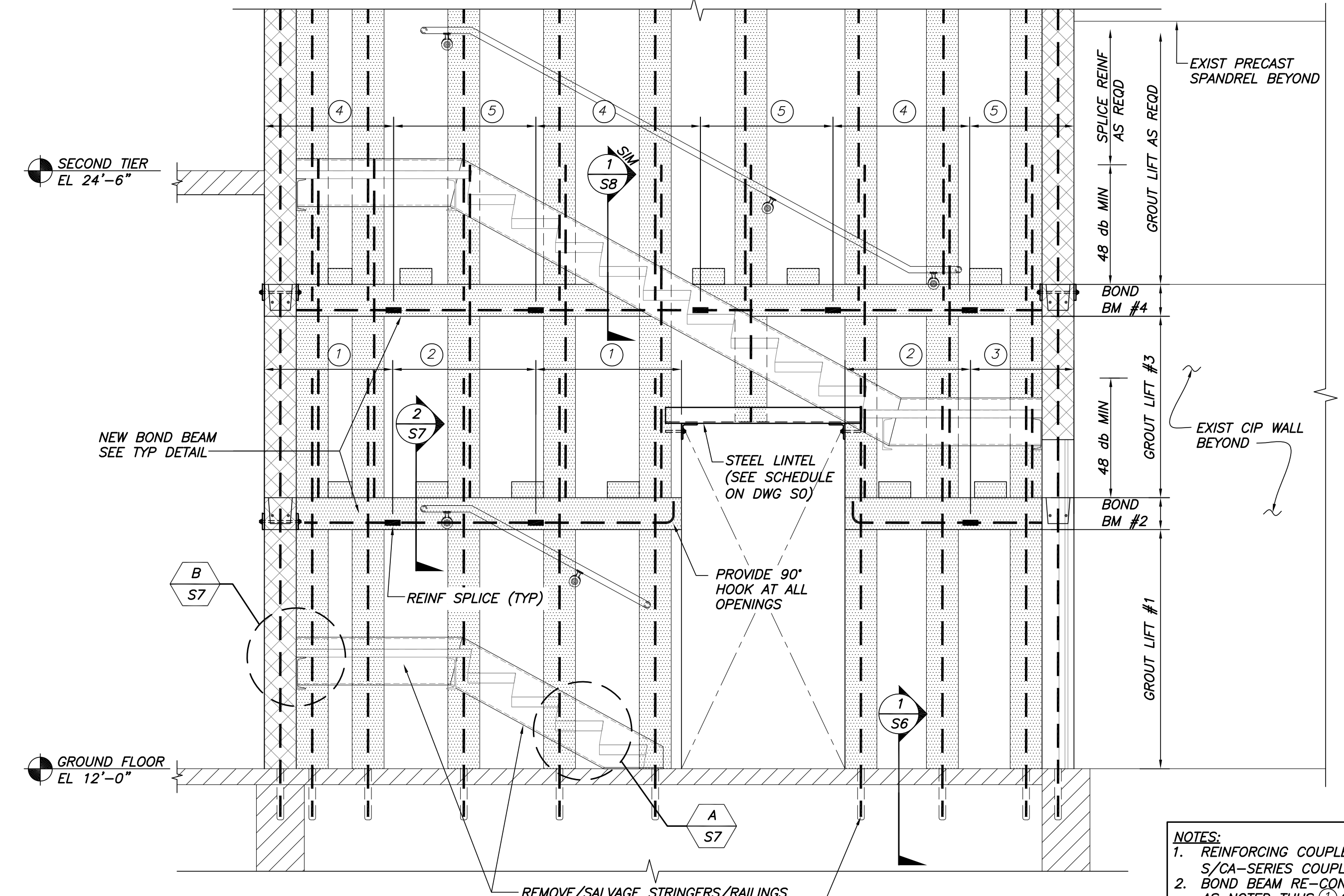


DETAIL A
3/4\"=1'-0\"

- REPAIR NOTES:**
1. REMOVE ALL CIP TREADS & LANDING CONCRETE AND PANS.
 2. SALVAGE STRINGERS/RAILINGS AND LANDING SUPPORTS.
 3. CLEAN ALL EXISTING STEEL AND PREPARE SURFACE TO BE PAINTED.
 4. FIELD WELD NEW CLIP ANGLES TO SUPPORT PRECAST TREADS.
 5. INSTALL STAINLESS STEEL PANS AT LANDINGS AND FILL WITH FIBER REINFORCED CIP CONG.
 6. INSTALL NEW PRECAST TREADS.
 7. INSTALL S.S. BENT PLATE RISERS



DETAIL B
3/4\"=1'-0\"



DETAIL C
1/2\"=1'-0\"

- NOTES:**
1. REINFORCING COUPLERS TO BE DAYTON BAR LOCK S/CA-SERIES COUPLERS.
 2. BOND BEAM RE-CONSTRUCTION SHALL BE DONE IN PHASES AS NOTED THUS (1) ON DRAWING. ALL LIKE NUMBERED SECTION CAN BE COMPLETED AT THE SAME TIME.
 3. PROVIDE SHORING OF WALL AS NECESSARY.

THIS DRAWING IS AN INSTRUMENT OF SERVICE AND SHALL REMAIN THE PROPERTY OF BECKER STRUCTURAL ENGINEERS INC. IT SHALL NOT BE REPRODUCED, COPIED, LENT OR DISPOSED OF DIRECTLY OR INDIRECTLY FOR ANY PURPOSE OTHER THAN FOR WHICH IT IS SPECIFICALLY FURNISHED AND MUST BE RETURNED TO BECKER STRUCTURAL ENGINEERS INC. ON COMPLETION OF WORK, IF REQUESTED.

BECKER
STRUCTURAL ENGINEERS
75 York Street, Portland, Maine 04101
207.879.1838 • beckerstructural.com

STATE OF MAINE
TODD NEAL
NO. 9406
PROFESSIONAL ENGINEER

Approved	X
Issued For	FOR BID AND PERMIT
Date	11/10/15
Rev. No	

CASCO BAY PARKING GARAGE
STAIR/ELEVATOR TOWER RESTORATION
PORTLAND, MAINE

SECTIONS & TYPICAL DETAILS

Designed	JMM	Scale	AS NOTED
Drawn	RJB	Date	11/10/15
Checked	JMM	Becker Job Number	3604

S7