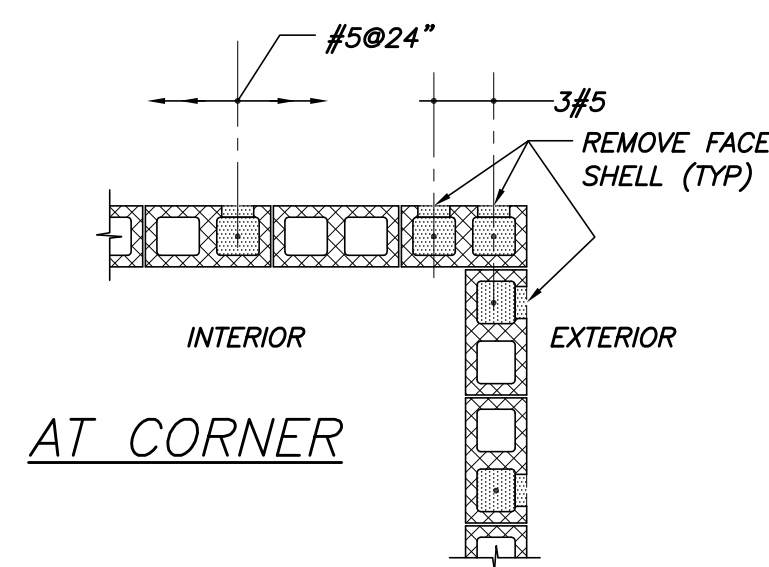
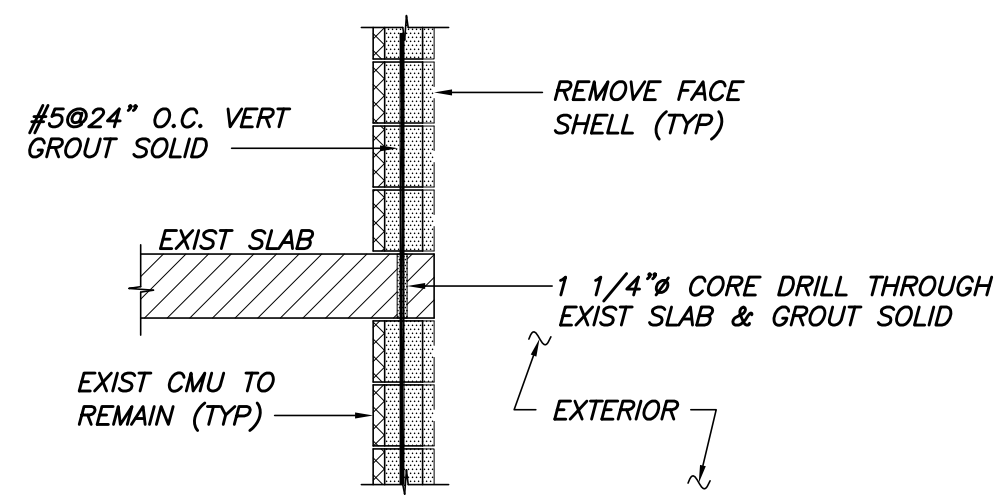


AT JAMB OPENING AT FREE END



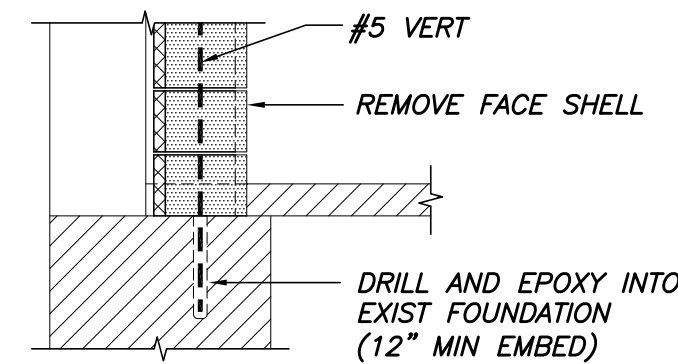
AT CORNER



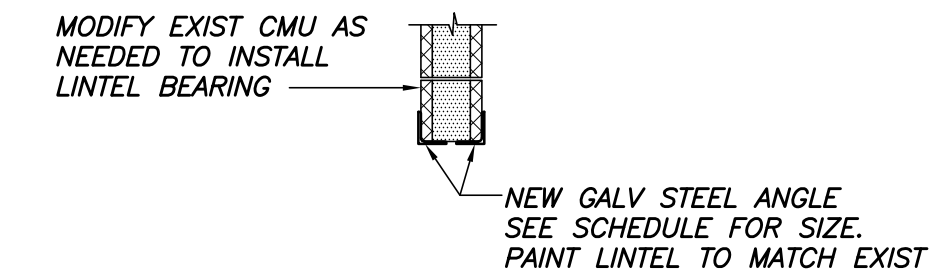
TYPICAL CMU WALL SECTION

N.T.S.

NOTE:
EXTERIOR WALL SYSTEM NOT SHOWN FOR CLARITY; REF ARCH DRAWINGS



SECTION 1
1/2"=1'-0"



NOTE: REMOVE AND RESET DOOR FRAME AS NEEDED TO INSTALL LINTEL.

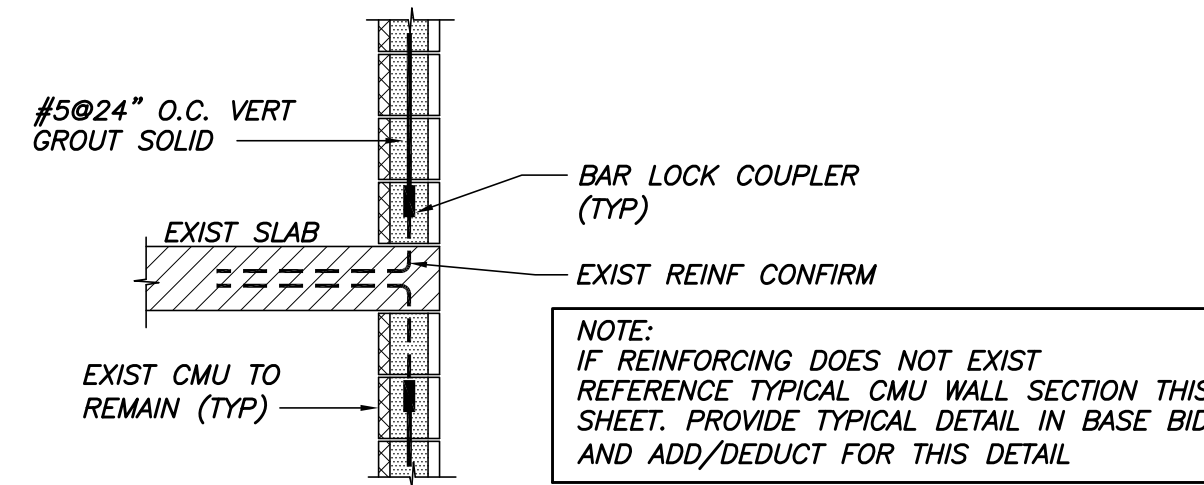
SECTION 2
1/2"=1'-0" S2, S4 & S5

TYP PLAN DETAILS AT CMU WALLS

N.T.S.

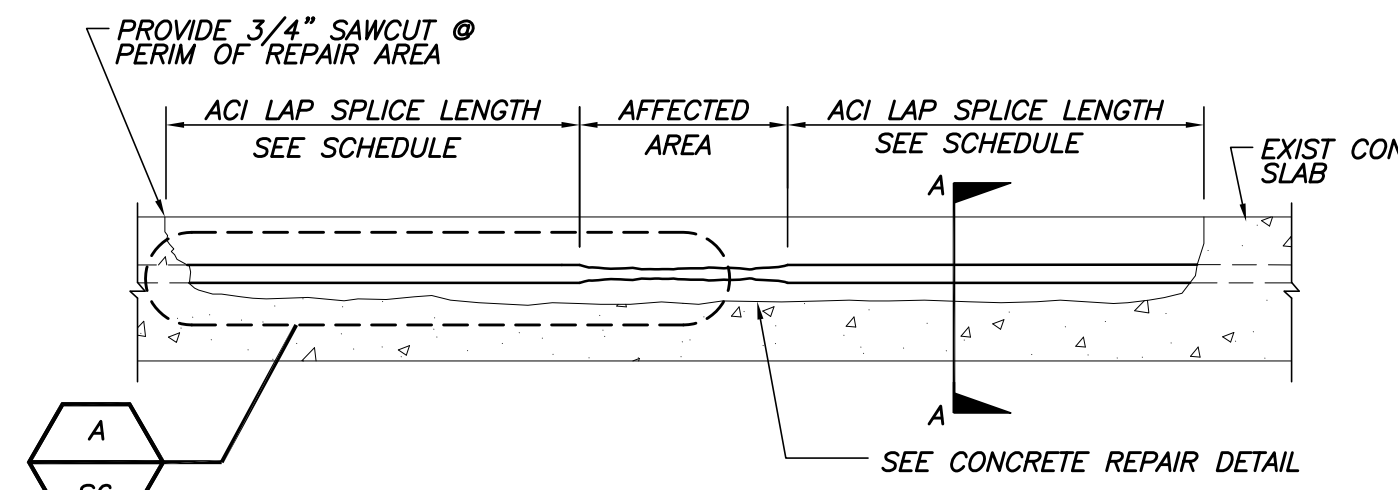
NOTES:

- ALL REINFORCED CELLS ARE TO BE FULLY GROUTED.
- LAP BARS AT SPLICES MIN. 48 BAR DIAMETERS.
- PROVIDE 2#5 MIN ABOVE & BELOW ALL OPENINGS. EXTEND 24" MIN BEYOND EDGE OF OPENING EA SIDE AT WALL REBUILD AREAS.
- ALL CMU WALL REINF SHALL BE REVIEWED BY THE STRUCTURAL ENGINEER OR THEIR DESIGNATED REPRESENTATIVE PRIOR TO GROUTING.



SECTION 3
1/2"=1'-0" S1

NOTE:
IF REINFORCING DOES NOT EXIST REFERENCE TYPICAL CMU WALL SECTION THIS SHEET. PROVIDE TYPICAL DETAIL IN BASE BID AND ADD/DEDUCT FOR THIS DETAIL



TYPICAL REINFORCEMENT REPAIR

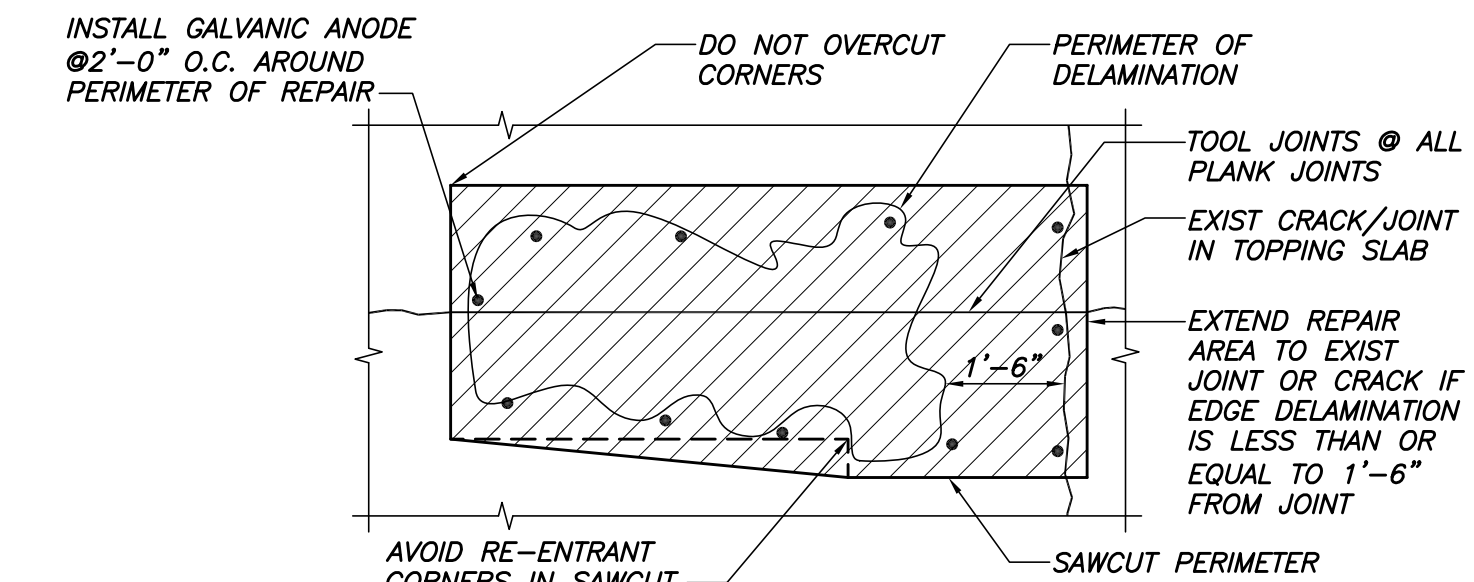
N.T.S.

PREPARATION:

- SEE TYPICAL CONCRETE REPAIR FOR REMOVAL/REPLACEMENT OF CONCRETE.

INSPECTION:

- IF REINFORCEMENT HAS LOST MORE THAN 25% OF ITS CROSS SECTIONAL AREA, NOTIFY STRUCTURAL ENGINEER PRIOR TO PROCEEDING WITH PATCH.



PARTIAL SLAB PLAN

N.T.S.

NOTES:

- AREA OF CONCRETE REPAIR.
- EXISTING REINFORCEMENT SHALL BE SALVAGED.
- PROVIDE TOOLED JOINTS AROUND PERIMETER OF REPAIR AND AS NOTED IN PLAN.

REPAIR:

- INSTALL GALVANIC ANODE
 - ENSURE ALL EXPOSED EXISTING REINFORCEMENT IS TIED W/STEEL TIE WIRES.
 - INSTALL ANODES USING A SUITABLE WIRE TWISTING TOOL TO ELIMINATE FREE MOVEMENT AND ENSURE GOOD ELECTRICAL CONNECTION. ANODE SHALL HAVE 3/4" MINIMUM COVER AND BE PLACED WITHIN 6" OF EDGE OF REPAIR.

CONCRETE REPAIR NOTES

GENERAL:

- ALL TOPPING SLAB REPAIRS ARE ASSUMED TO BE 4" DEEP AND SHOULD EXTEND UNTIL SOUND CONCRETE IS FOUND.
- DUST AND MOISTURE PROTECTION SHALL BE PROVIDED AT AND BELOW THE LEVELS OF REPAIR.

CONCRETE REMOVAL:

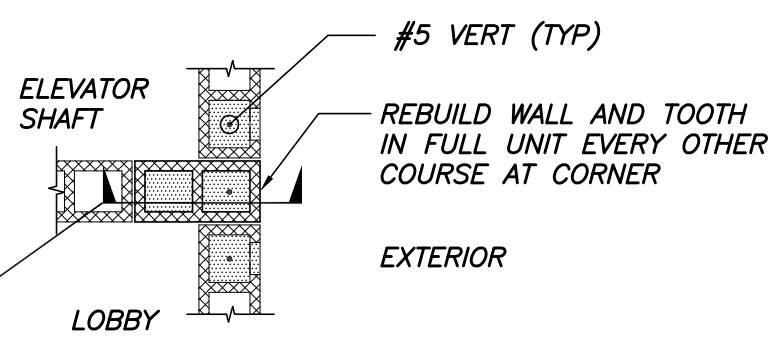
- REFERENCES: ICRI 03750, 03732, ACI 546R-04.
- AT EACH REPAIR AREA, REMOVE SMALL AREA OF CONCRETE TO CONFIRM DEPTH OF REINFORCEMENT PRIOR TO CUTTING.
- SAW CUT PERIMETER OF REPAIR AREA TO A DEPTH OF 3/4". REFERENCE PARTIAL SLAB PLAN THIS SHEET FOR ADDITIONAL INFORMATION. NOTE THAT PERIMETER MAY NEED TO BE EXTENDED.
- REMOVE ALL DETEIORATED, DELAMINATED AND UNSOUND CONCRETE. CONCRETE SHALL BE REMOVED BY A METHOD THAT LIMITS THE DAMAGE TO SURROUNDING SOUND CONCRETE TOPPING.
- MATERIAL REMOVAL SHALL CONTINUE UNTIL AGGREGATE PARTICLES ARE BEING BROKEN RATHER THAN BEING REMOVED FROM THE CEMENT MATRIX.
- USE OF MECHANICAL IMPACT CHIPPING HAMMERS SHALL BE LIMITED TO 30lb WITH A 15lb RECOMMENDED. ALL NECESSARY PRECAUTIONS MUST BE TAKEN TO AVOID MICRO CRACKING (BRUISING) OF THE SURFACE OF THE PRECAST/PRESTRESSED PLANKS.
- ALL EXISTING REINF SHALL BE SALVAGED.

PREPARATION:

- REMOVE ALL SCALE AND RUST. REMAINING EXISTING REINF AND STEEL TRUSS REINF SHALL BE PRIMED WITH A PRODUCT COMPATIBLE WITH THE CONCRETE REPAIR MATERIAL.
- PRIOR TO PROCEEDING WITH REPAIR, INSPECT ALL CONCRETE SURFACES. INSTALLATION OF REPAIR MATERIAL INDICATES ACCEPTANCE OF ALL SUBSTRATE CONDITIONS.
- INSTALL GALVANIC ANODE AT LOCATIONS SHOWN ON DRAWINGS. REFERENCE NOTES THIS SHEET.
- APPLY POLYMER ADHESIVE/BONDING AGENT TO ALL CONCRETE SURFACES OR COAT ALL CONCRETE SURFACES WITH A CEMENT SLURRY PRIOR TO PLACING REPAIR MATERIAL.
- INSTALL NEW REINF IF REQUIRED AND TIE TO EXISTING. PROVIDE CHAIRS AS REQUIRED TO MAINTAIN PROPER PLACEMENT AND MINIMUM COVER.
- REPAIR MATERIAL FOR SMALL PLACEMENTS (PLACEMENT LESS THAN 1 YARD) SHALL BE A ONE-COMPONENT, EARLY STRENGTH GAINING, CEMENTITIOUS REPAIR MATERIAL WITH THE FOLLOWING PROPERTIES (REFERENCE SPECIFICATIONS FOR ADDITIONAL INFORMATION):
COMPRESSIVE STRENGTH: 5,000 PSI (MIN)
- PLACEMENT: ALL CIP REPAIR MATERIAL MUST BE TESTED AS PER THE SPECIFICATIONS.
- ALL JOINTS SHALL BE HAND TOOLED.

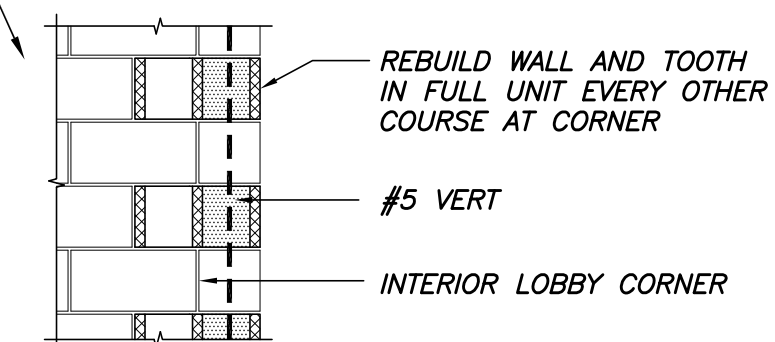
CONCRETE CURING:

- WET CURE FOR MINIMUM OF 3 DAYS (72 HOURS). REFERENCE THE SPECIFICATIONS FOR FURTHER INFORMATION.
- PROTECT SLAB REPAIRS UNTIL MEMBRANE IS INSTALLED.
- FOLLOW TRAFFIC MEMBRANE REQUIREMENTS FOR PREPARATION AND APPLICATION OF MEMBRANE OVER CONCRETE REPAIR AREAS.



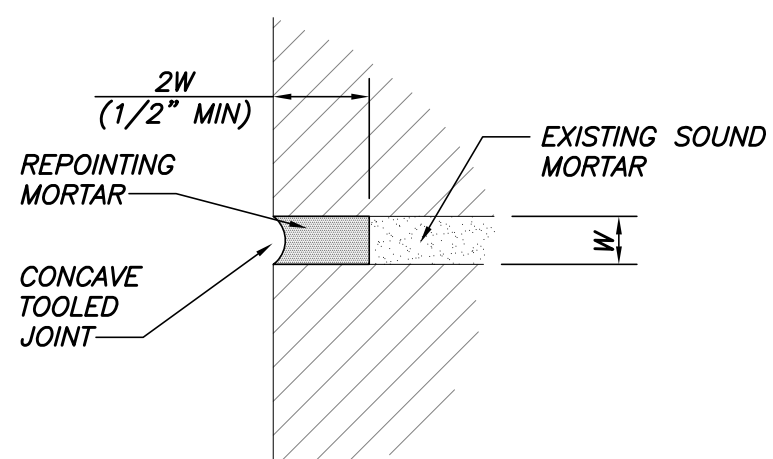
CMU WALL REBUILD @ CORNER

N.T.S.



NOTES:

- REBUILD MASONRY WALL AS INDICATED.
- REMOVE LOOSE AND DETERIORATED GROUT. DO NOT DAMAGE EXIST REINFORCEMENT.
- PROVIDED DUROWALL TRUSS TIE HORIZ REINF @32" O.C., U.N.O. AT WALL REBUILD AREAS.
- PROVIDED BOND BEAMS W/2#5 CONT AT TOP OF WALL AT WALL REBUILD AREAS.
- INSPECT EXIST REINFORCEMENT. NOTIFY ENGINEER IF MORE THAN 25% SECTION LOSS PRIOR TO PROCEEDING WITH REPAIR WORK.
- CLEAN EXISTING REINFORCING.

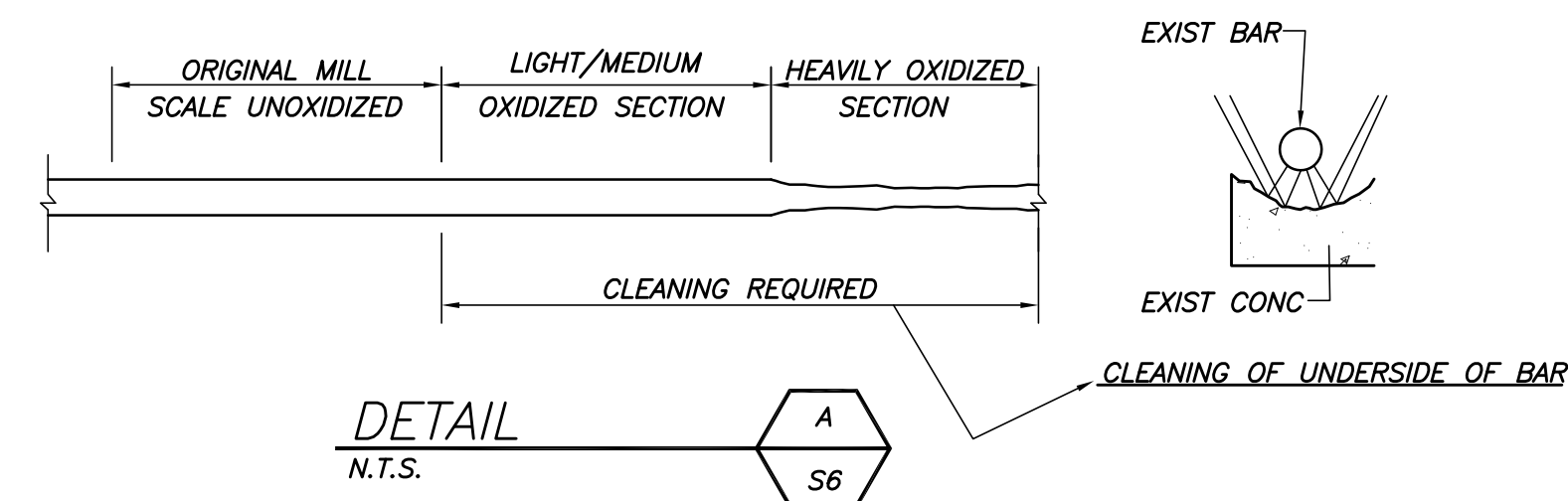
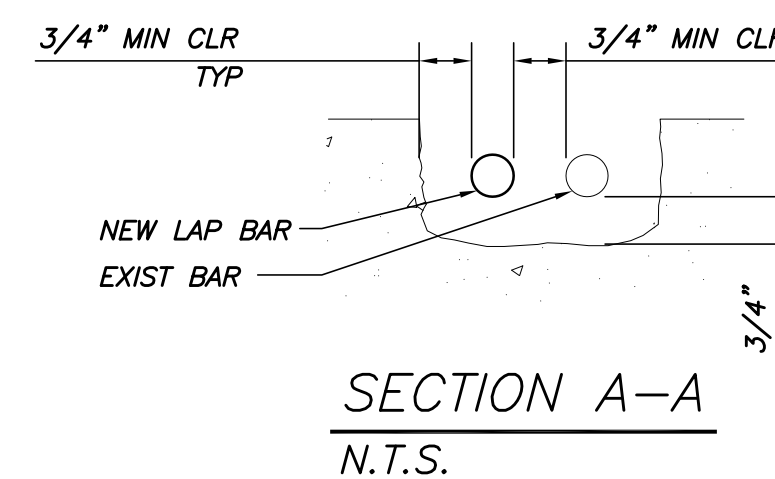


TYPICAL REPOINTING DETAIL

N.T.S.

NOTES:

- HORIZONTAL JOINTS: CUT JOINTS UTILIZING GIRDERS TO SCORE JOINT AND HAND CHIP REMAINING MORTAR MATERIAL ONCE RELIEF JOINT IS CUT IN CMU.
- VERTICAL JOINTS: NO GRINDING OF VERTICAL JOINTS IS ALLOWED. REMOVE MORTAR WITH HAND TOOLS.
- DO NOT DAMAGE EXISTING MASONRY.
- REPOINTING MORTAR SHALL MATCH EXISTING IN MATERIAL PROPERTIES.
- TOOL JOINTS TO MATCH ORIGINAL APPEARANCE OF JOINTS.
- REFERENCE THE PROJECT SPECIFICATIONS FOR ADDITIONAL REQUIREMENTS



Approved For	X
Issued For	FOR BID AND PERMIT
Date	11/10/15
Rev. No	

CASCO BAY PARKING GARAGE
STAIR/ELEVATOR TOWER RESTORATION
PORTLAND, MAINE
SECTIONS & TYPICAL DETAILS

Designed	JMM	Scale	AS NOTED
Drawn	RJB	Date	11/10/15
Checked	JMM	Becker Job Number	3604