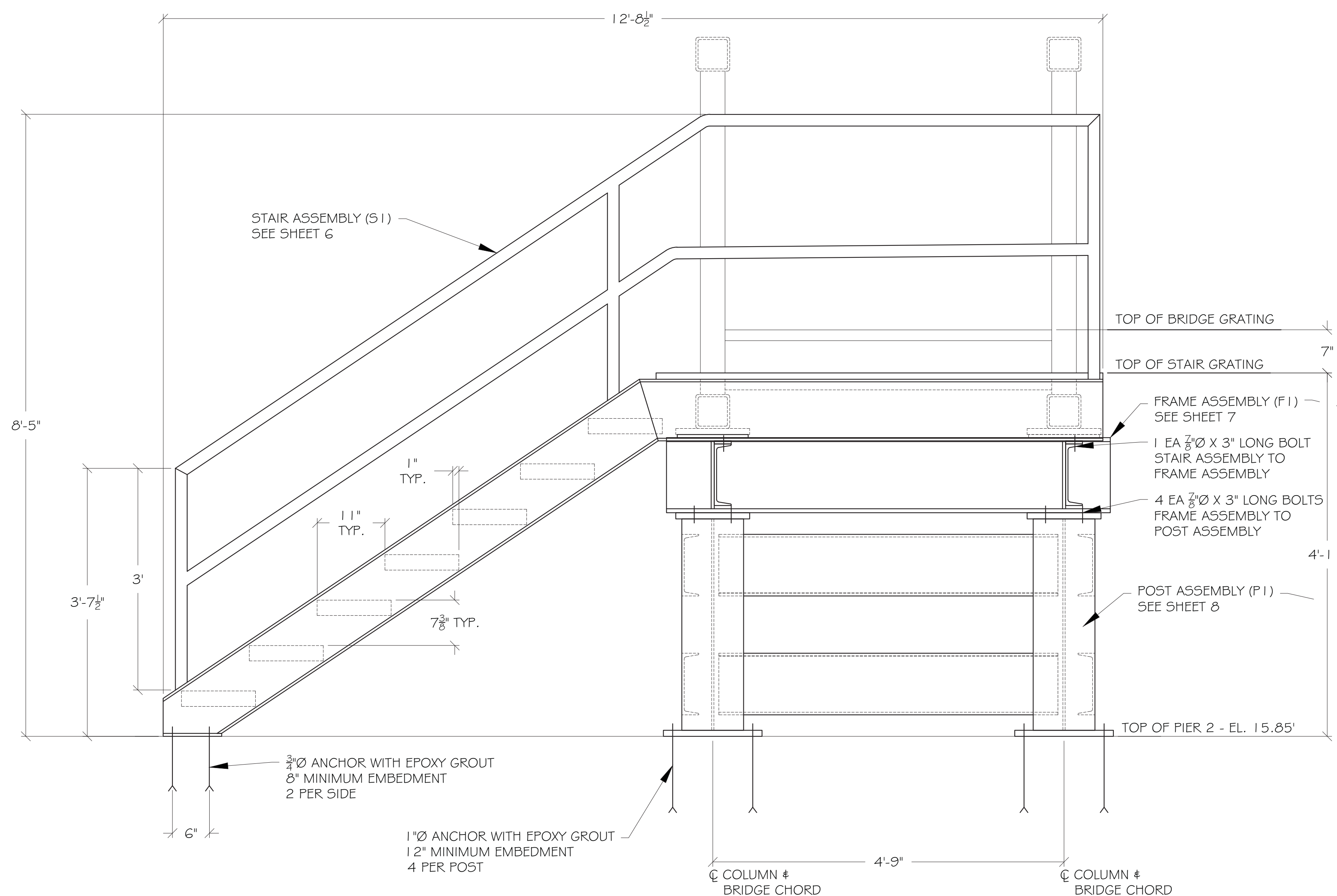
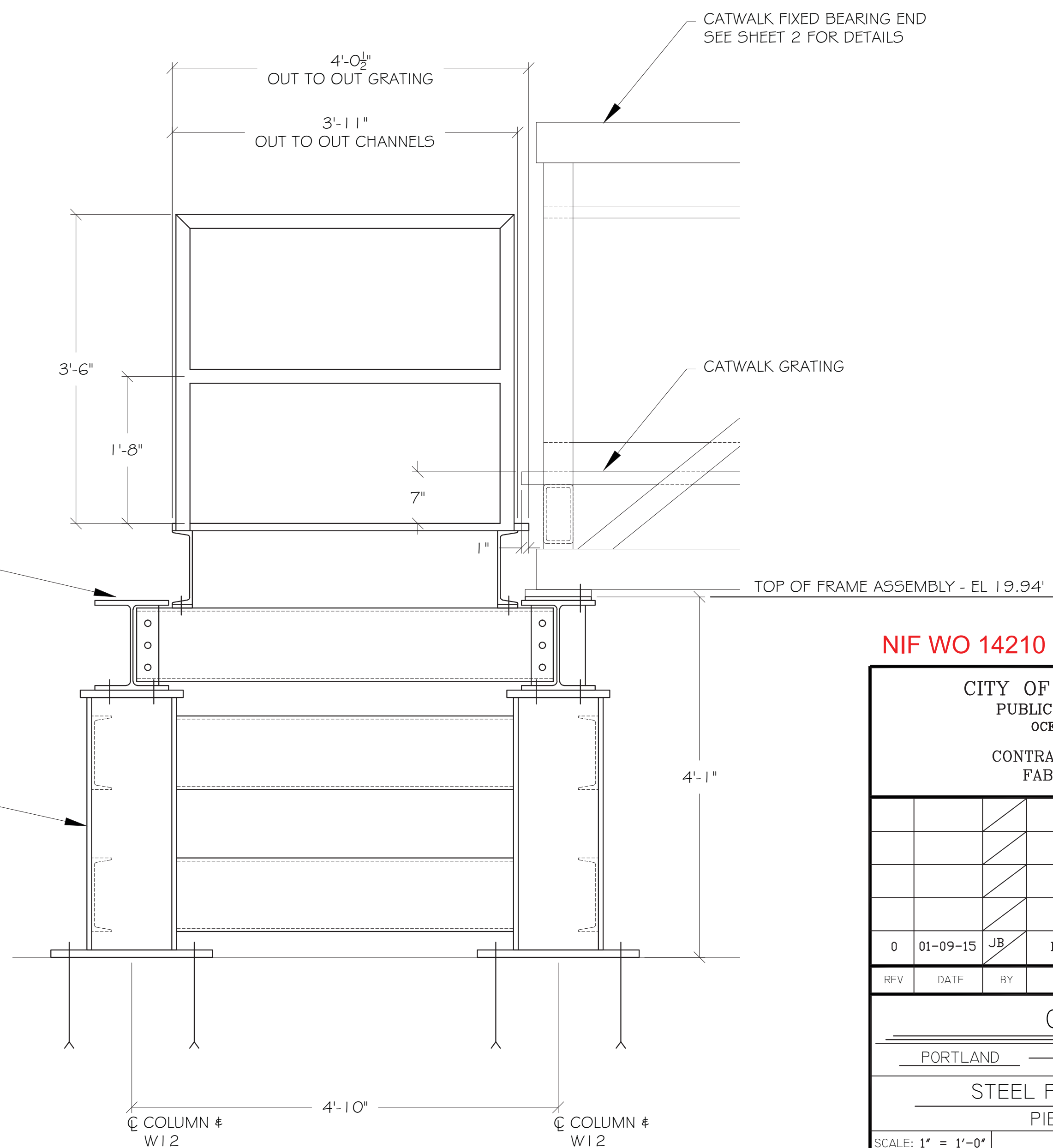


PIER 2 STAIRS - PLANVIEW



ELEVATION A-A



ELEVATION B-B

NOTES:

- 1) MATERIALS:  
 STEEL BEAMS - ASTM A992  
 CHANNEL & PLATE - ASTM A36 OR GREATER  
 BOLTS - ASTM A325  
 NUTS - ASTM A563  
 WASHERS - ASTM F436  
 GRATING - SERRATED STEEL BAR GRATING
- 2) COATINGS:  
 FABRICATED STEEL - METALLIZED  
 GRATING, BOLTS, NUTS & WASHERS - GALVANIZED
- 3) STAIRS TO BE FABRICATED AND METALLIZED IN ASSEMBLY UNITS. MATCH FIT ASSEMBLIES AND CHECK OVERALL DIMENSIONS PRIOR TO METALLIZING.
- 4) MAY BE SHIPPED AS ASSEMBLIES OR AS ONE COMPLETE UNIT.

SHIP		BILL OF MATERIAL				
QTY.	MK.	QTY.	MK.	DESCRIPTION	LENGTH	REMARKS
1				STEEL PEDESTAL LANDING		
		1	S1	STAIR ASSEMBLY		
		1	F1	FRAME ASSEMBLY		
		1	P1	POST ASSEMBLY		
20				3/8" BOLTS	0'-3"	GALVANIZED
32				3/8" WASHERS		GALVANIZED, FRAME TO POST
8				3/8" BEVELLED WASHERS		GALVANIZED, STAIR TO FRAME
20				3/8" NUTS		GALVANIZED
4				3/8" ANCHOR BOLTS		
16				1" ANCHOR BOLTS		

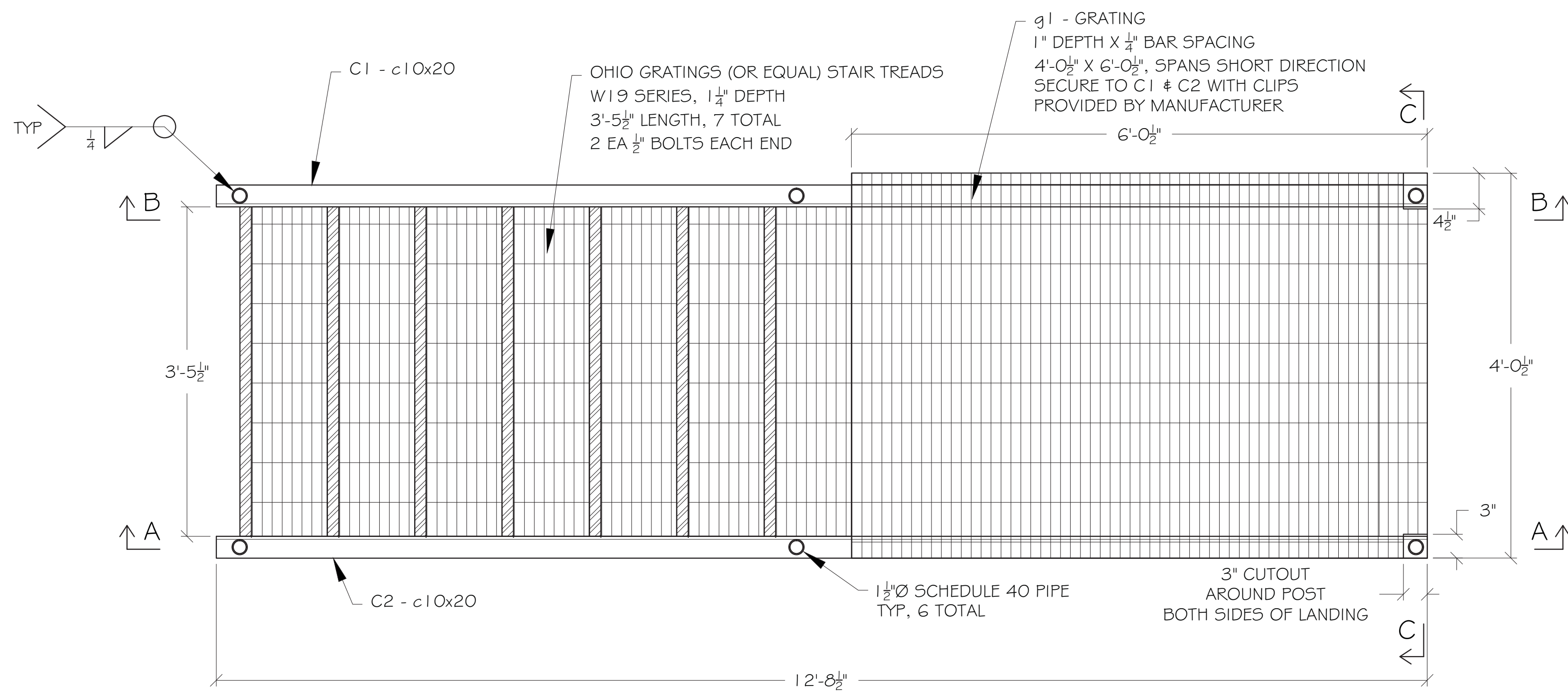
FOR APPROVAL

NIF WO 14210  
 CITY OF PORTLAND, MAINE  
 PUBLIC BUILDINGS DIVISION  
 OCEAN GATEWAY PIER 2  
 CONTRACTOR: PROCK MARINE  
 FABRICATOR: NIF, INC

REV	DATE	BY	DESCRIPTION
0	01-09-15	JB	ISSUED FOR REVIEW

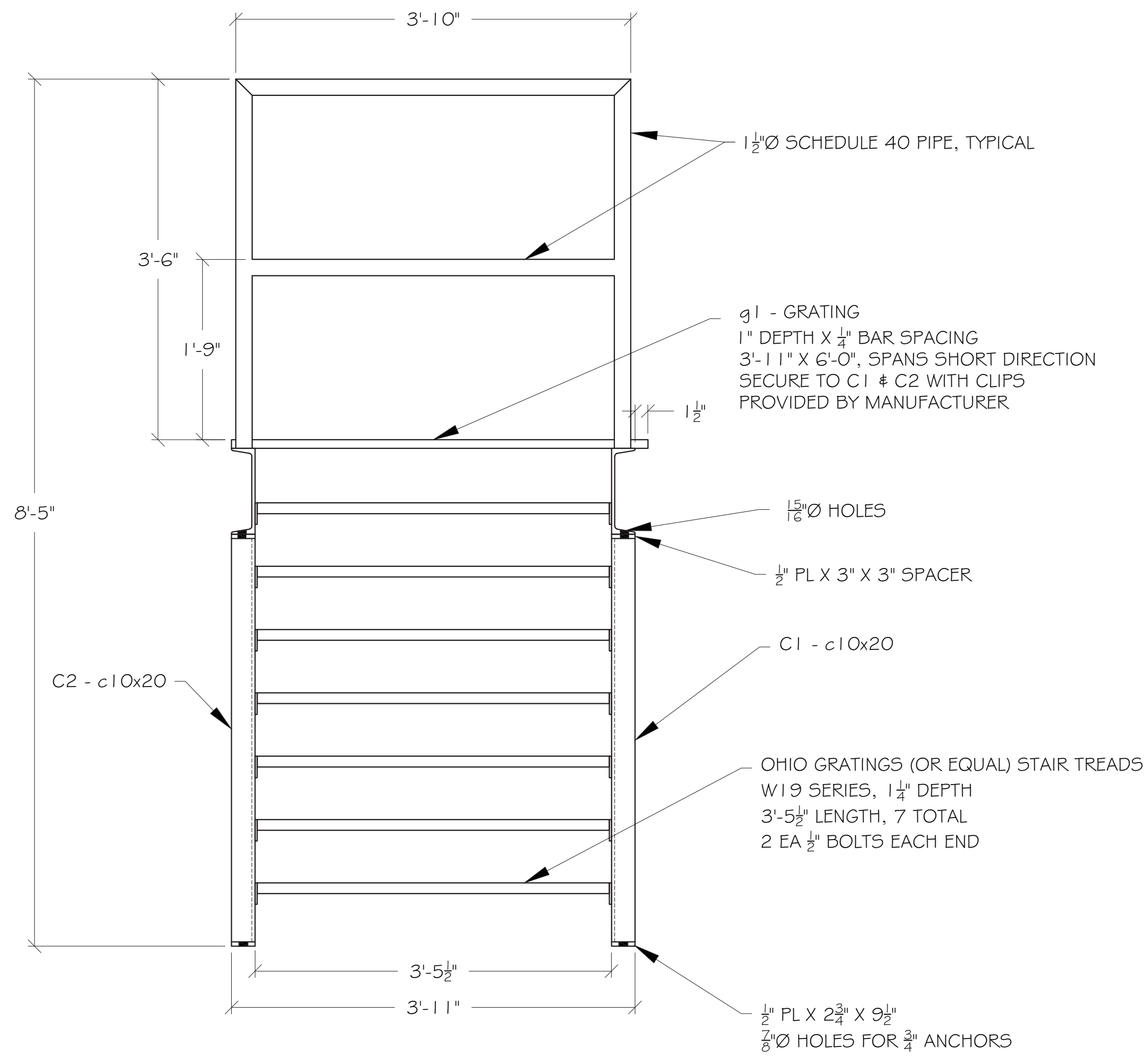
CATWALKS  
 PORTLAND MAINE  
 STEEL PEDESTAL LANDINGS  
 PIER 2 ASSEMBLY

SCALE: 1" = 1'-0"  
 DATE: 12-24-14  
 DRAWN: J. BRAGG  
 SHEET 5  
 JOB 0303

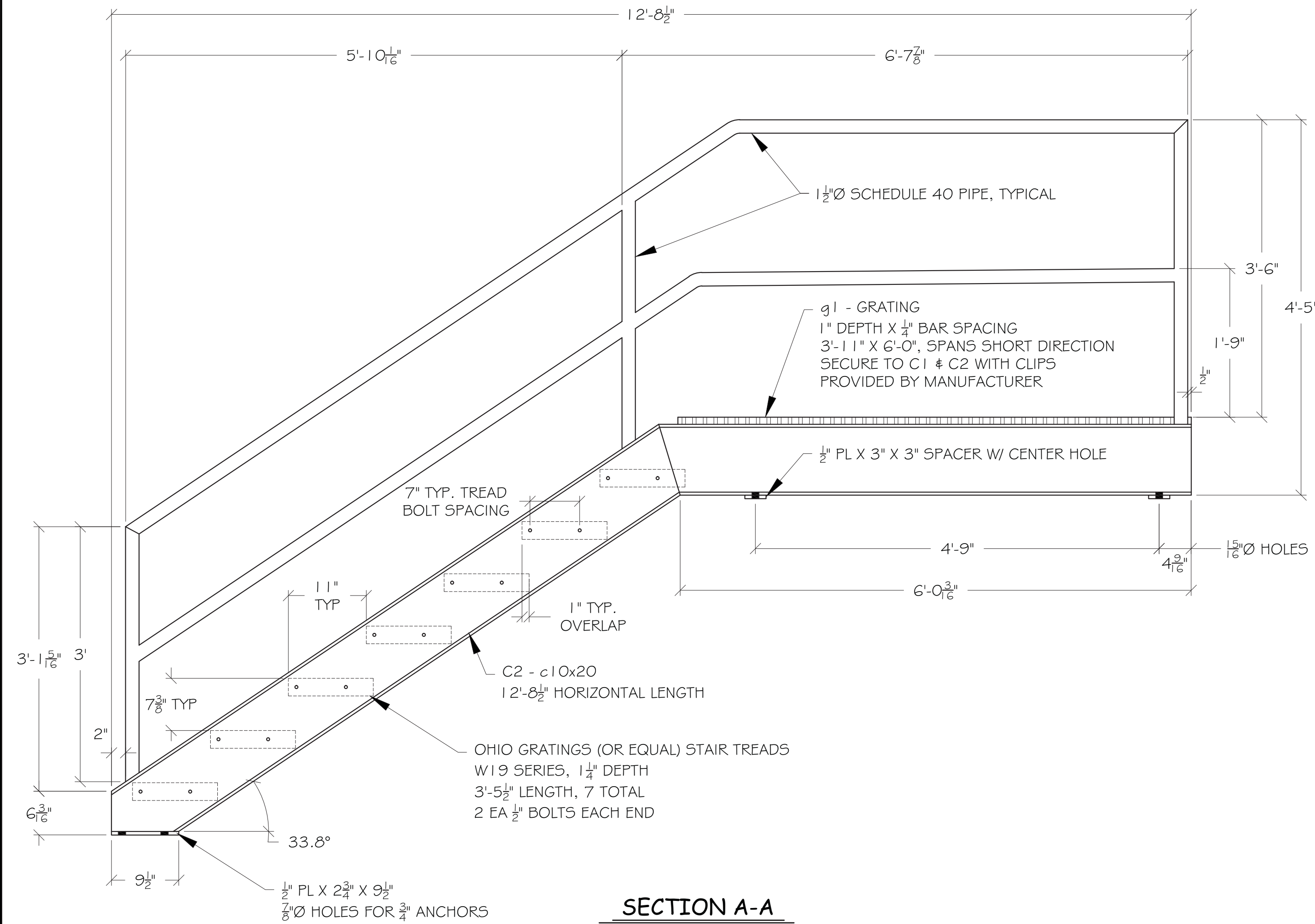


**S1 - STAIR ASSEMBLY - PLANVIEW**

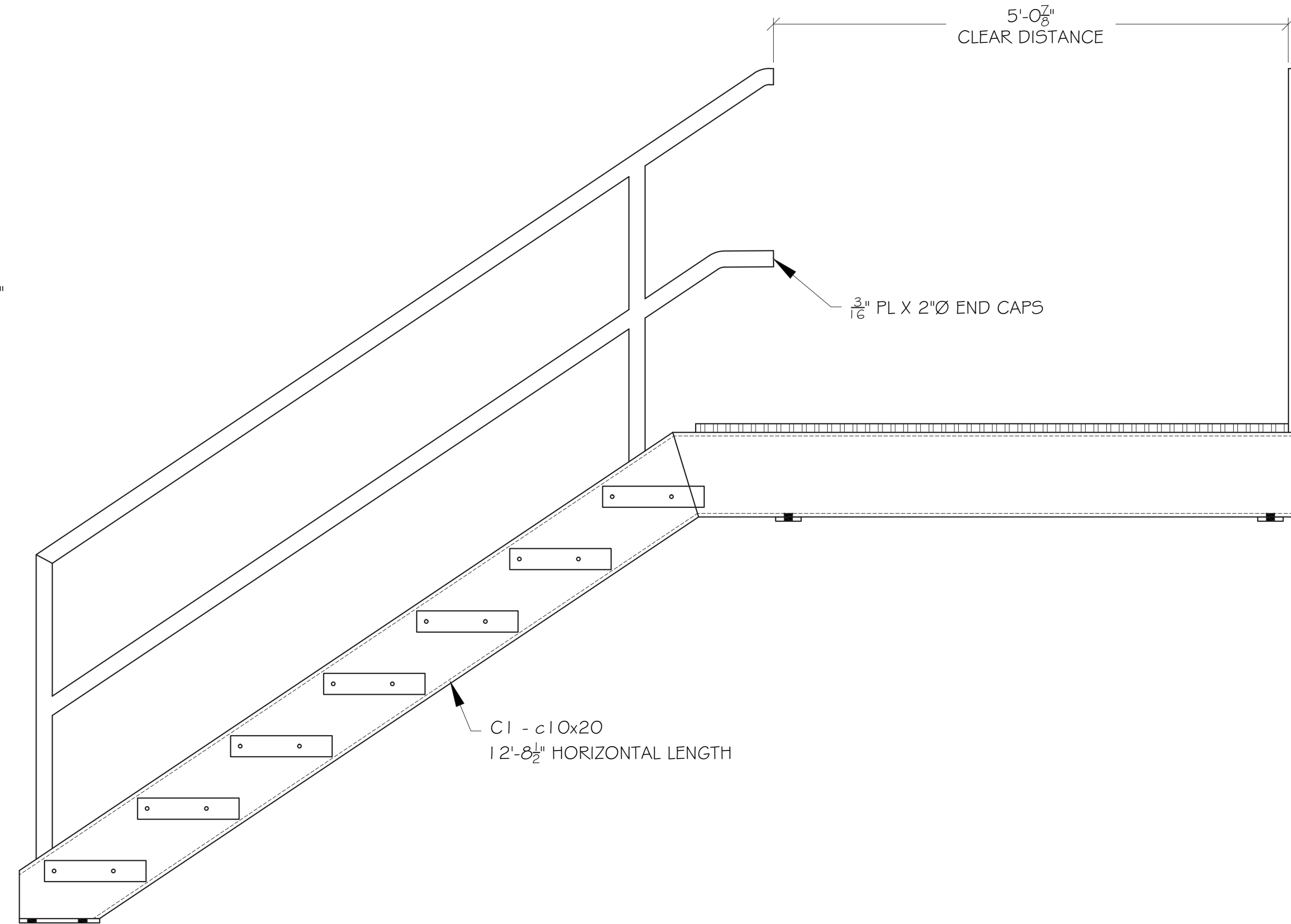
NOTE: BOLTS TO FRAME ASSEMBLY. SEE SHEETS 5 & 7



**SECTION C-C**



**SECTION A-A**



**SECTION B-B**

SAME AS SECTION A-A EXCEPT WHERE NOTED

SHIP		BILL OF MATERIAL				
QTY.	MK.	QTY.	MK.	DESCRIPTION	LENGTH	REMARKS
1	S1			STAIR ASSEMBLY		
		1	C1	C10X20	12'-8 1/2"	INCLUDES PLATES
		1	C2	C10X20	12'-8 1/2"	INCLUDES PLATES
		1		1 1/2" Ø POSTS	19'-0"	TOTAL POST LENGTH
		1		1 1/2" Ø RAIL	55'-0"	TOTAL RAIL LENGTH
		2		1/2" PL	2'Ø	
		1	g1	1" GRATING X 3'-1 1/4"	6'-0"	SERRATED & GALVANIZED
		7		1 1/4" STAIR TREADS	3'-5 1/2"	SERRATED & GALVANIZED

NIF WO 14210

**FOR APPROVAL**

CITY OF PORTLAND, MAINE  
PUBLIC BUILDINGS DIVISION  
OCEAN GATEWAY PIER 2  
CONTRACTOR: PROCK MARINE  
FABRICATOR: NIF, INC

REV	DATE	BY	DESCRIPTION
0	01-09-15	JB	ISSUED FOR REVIEW

**CATWALKS**

PORTLAND MAINE

STEEL PEDESTAL LANDINGS  
PIER 2 - STAIR ASSEMBLY DETAILS

SCALE: 1" = 1'-0"  
DATE: 12-24-14  
DRAWN: J. BRAGG



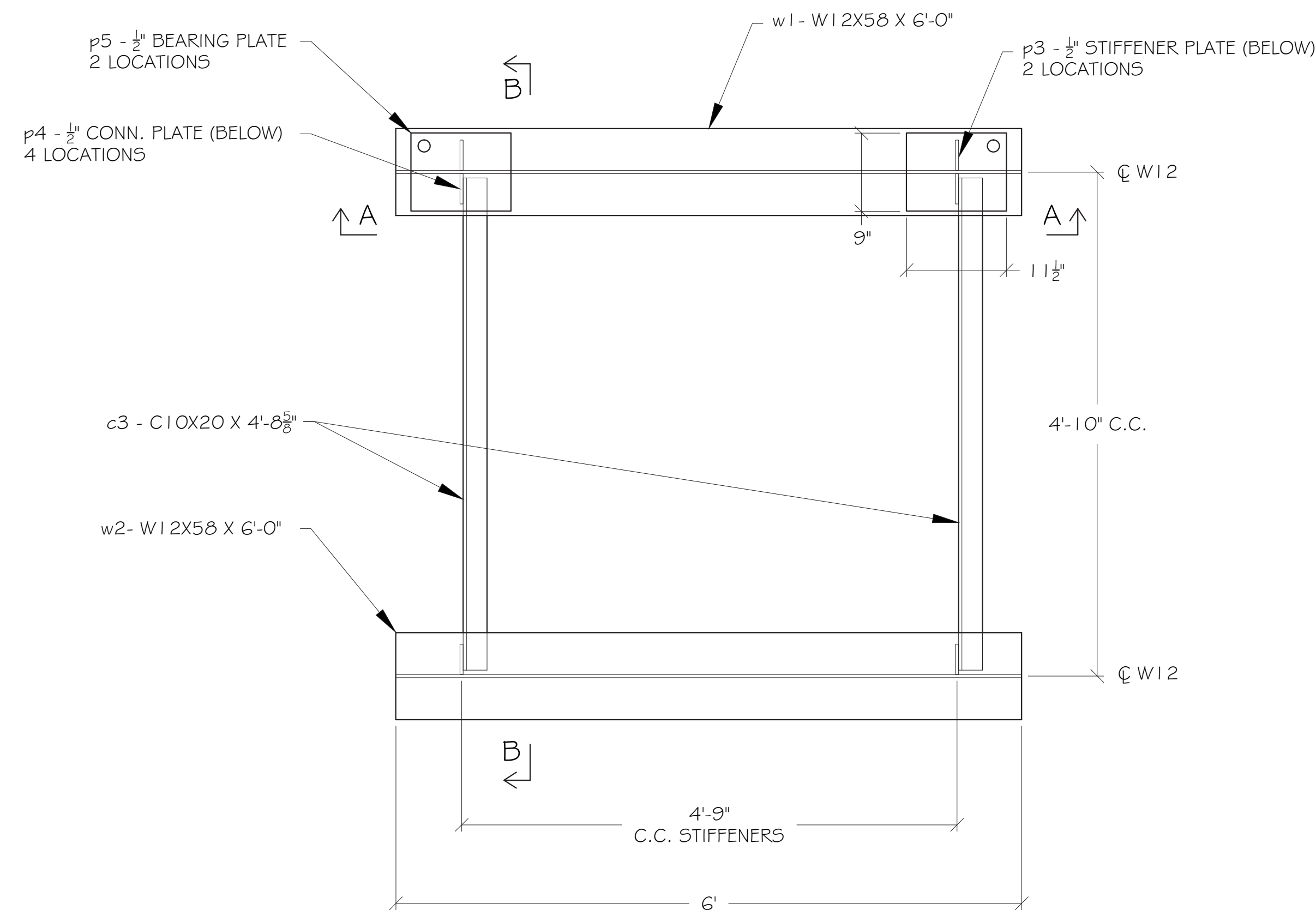
SHEET

6

JOB

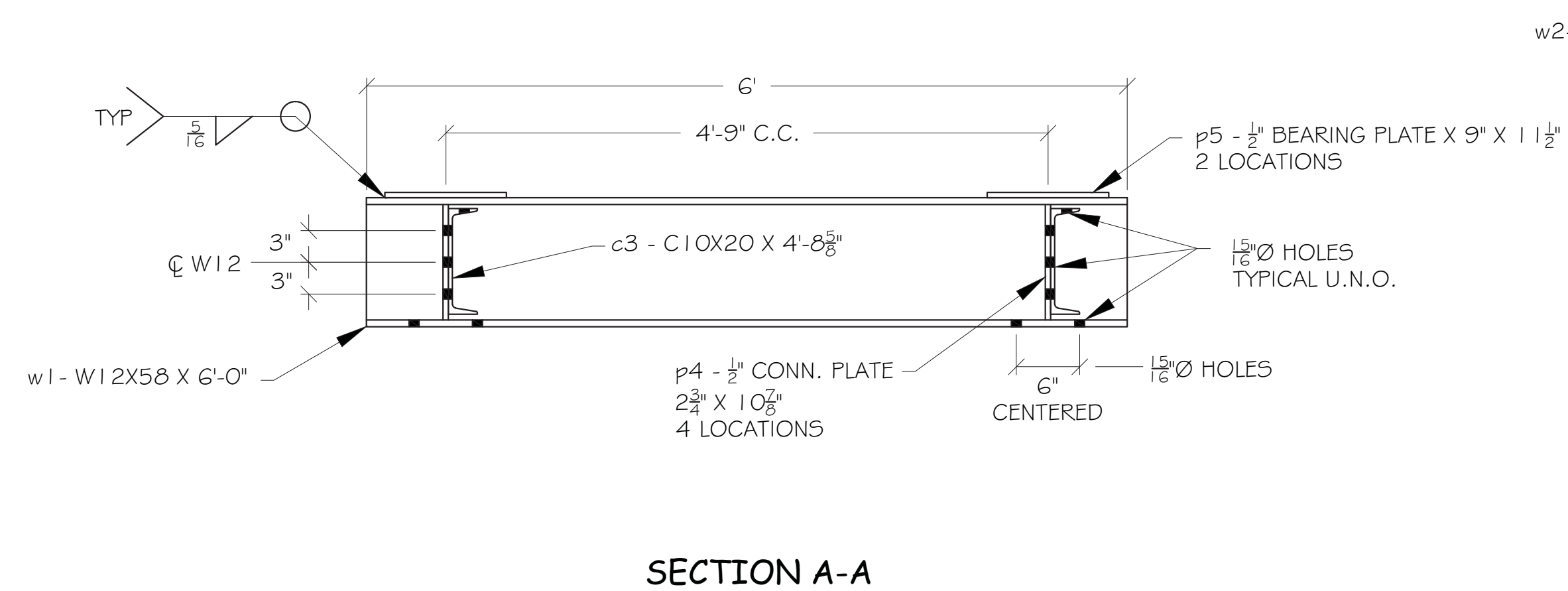
0303



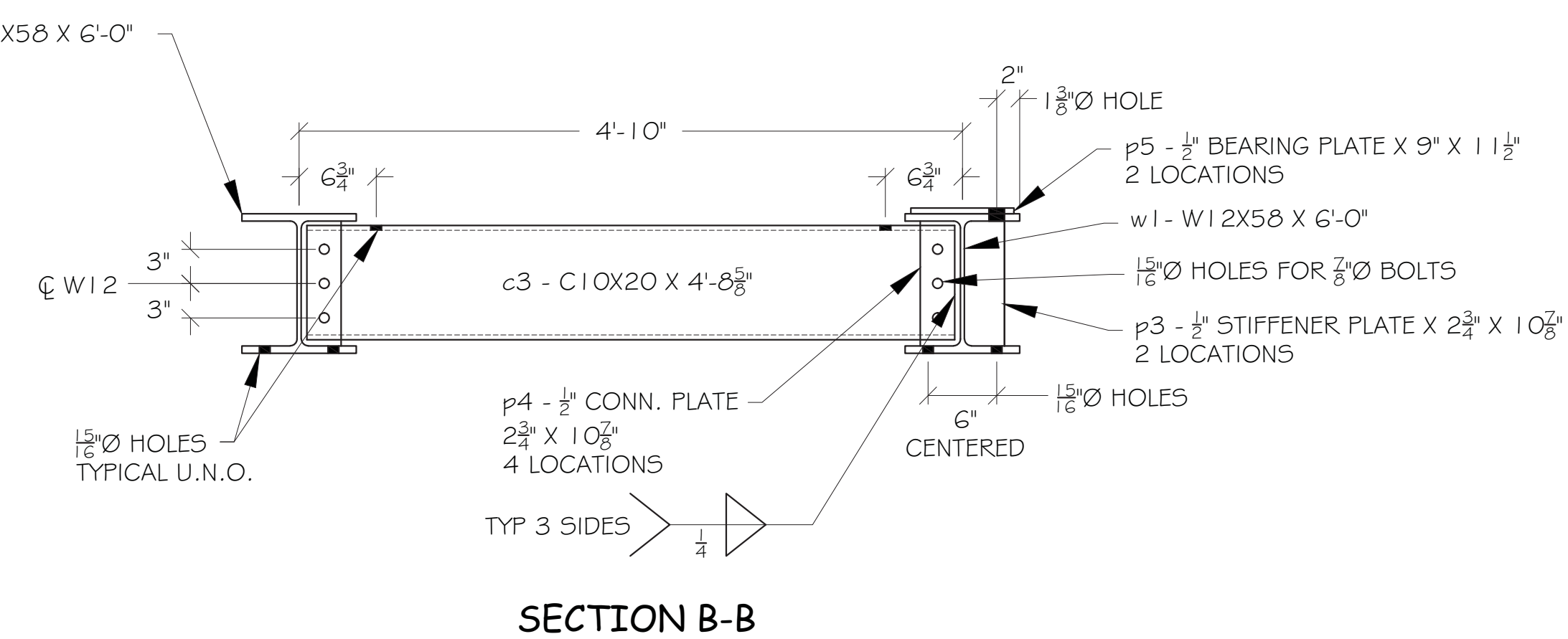


**F1 - FRAME ASSEMBLY - PLANVIEW**

NOTE: BOLTS TO STAIR ASSEMBLY & POST ASSEMBLY. SEE SHEETS 5, 6 & 7



**SECTION A-A**



**SECTION B-B**

SHIP		BILL OF MATERIAL				
QTY.	MK.	QTY.	MK.	DESCRIPTION	LENGTH	REMARKS
1	F1			FRAME ASSEMBLY		
		1	w1	W12X58	6'-0"	
		1	w2	W12X58	6'-0"	
		2	c3	C10X20	4'-8 5/8"	
		2	p3	1/2 PL X 2 3/4"	0'-10 7/8"	
		4	p4	1/2 PL X 2 3/4"	0'-10 7/8"	
		2	p5	1/2 PL X 2 3/4"	0'-10 7/8"	
				3/8" BOLTS	0'-2"	GALVANIZED
				3/8" WASHERS		GALVANIZED
				3/8" NUTS		GALVANIZED

NIF WO 14210 FOR APPROVAL

CITY OF PORTLAND, MAINE  
PUBLIC BUILDINGS DIVISION  
OCEAN GATEWAY PIER 2  
CONTRACTOR: PROCK MARINE  
FABRICATOR: NIF, INC

0	01-09-15	JB	ISSUED FOR REVIEW
REV	DATE	BY	DESCRIPTION

**CATWALKS**

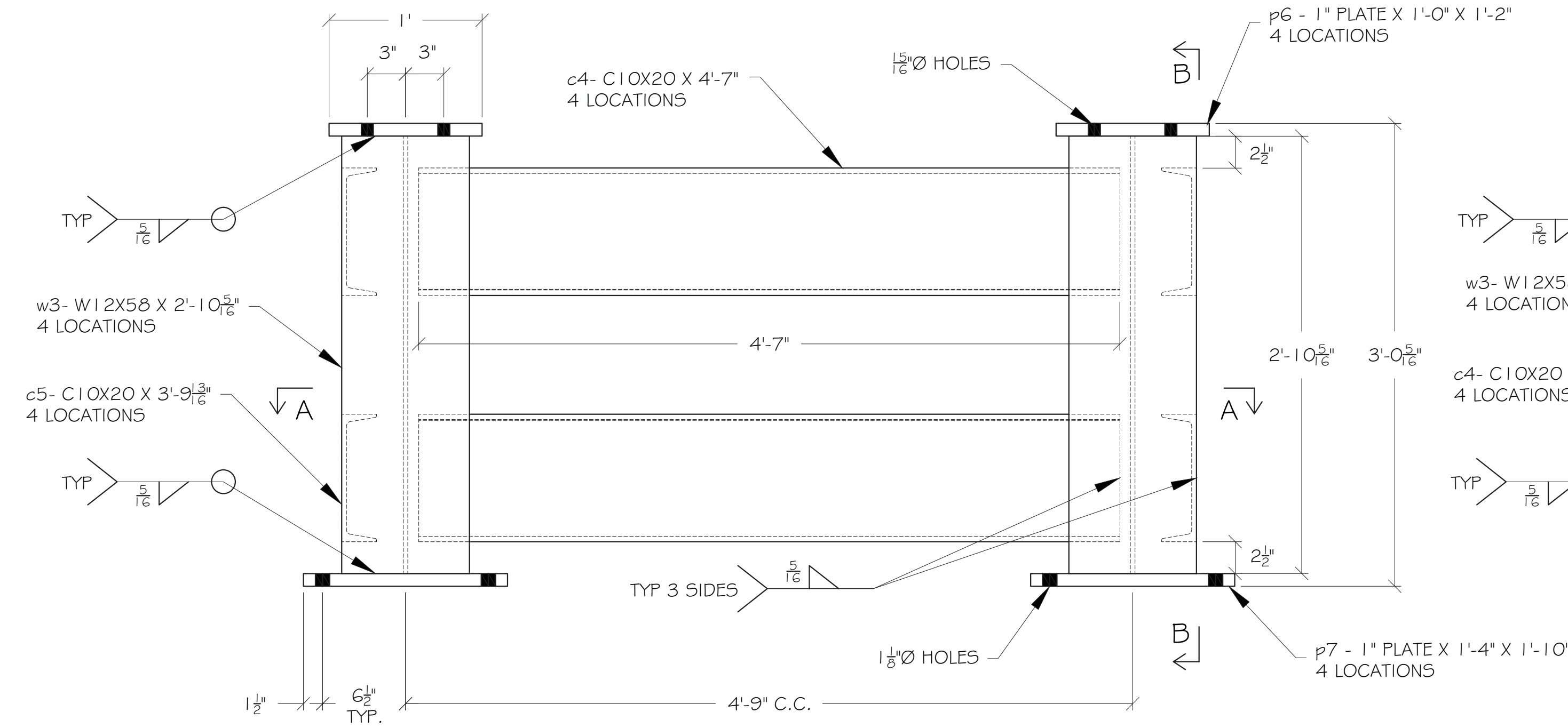
PORTLAND MAINE

**STEEL PEDESTAL LANDINGS**  
PIER 2 - FRAME ASSEMBLY DETAILS

SCALE: 1" = 1'-0"  
DATE: 12-24-14  
DRAWN: J. BRAGG

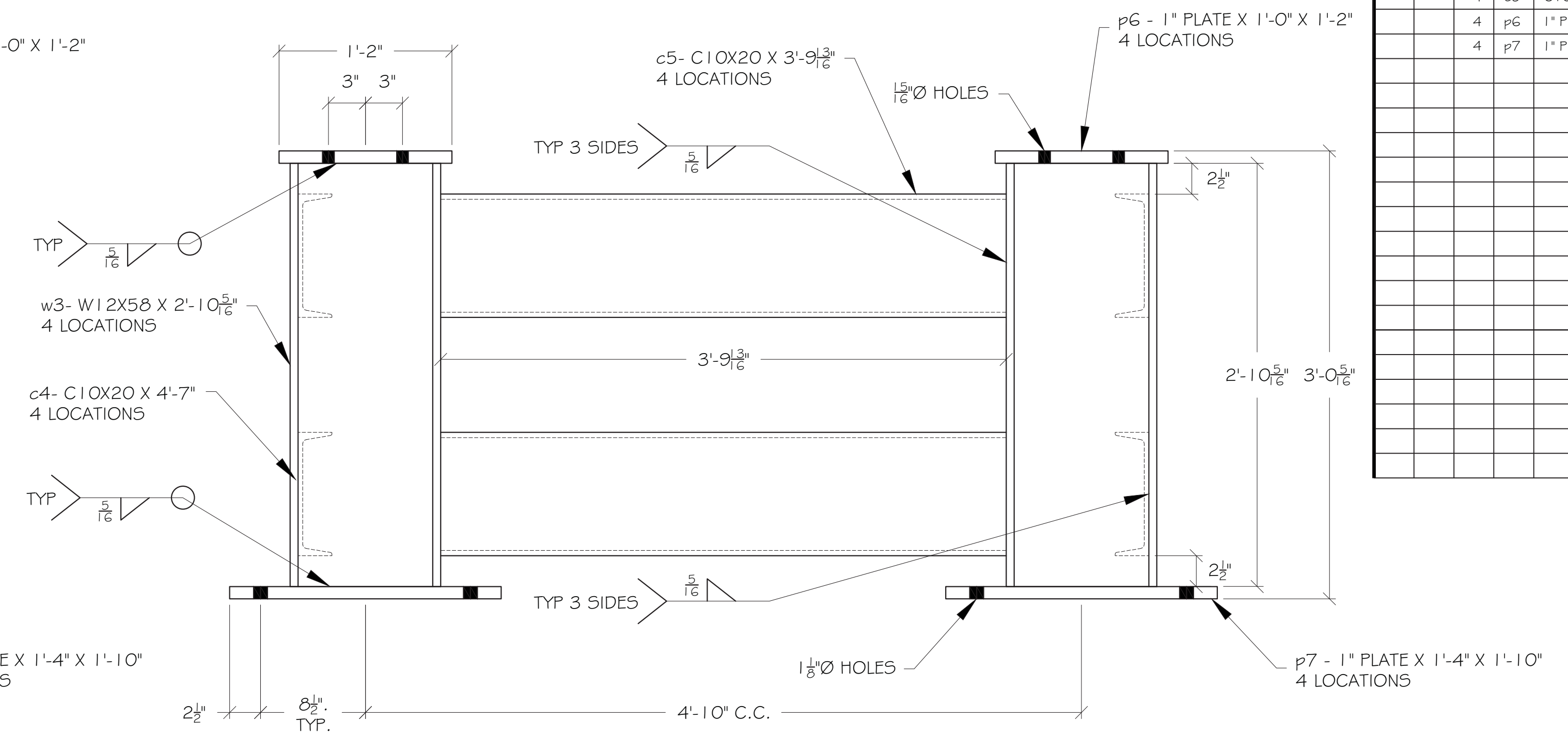
SHEET  
7  
JOB  
0303

SHIP		BILL OF MATERIAL				
QTY.	MK.	QTY.	MK.	DESCRIPTION	LENGTH	REMARKS
1	P1			POST ASSEMBLY		
		4	w3	W12X58	2'-10 <sup>5</sup> / <sub>16</sub> "	
		4	c4	C10X20	4'-7"	
		4	c5	C10X20	3'-9 <sup>3</sup> / <sub>16</sub> "	
		4	p6	1" PL X 1'-0"	1'-2"	
		4	p7	1" PL X 1'-4"	1'-10"	

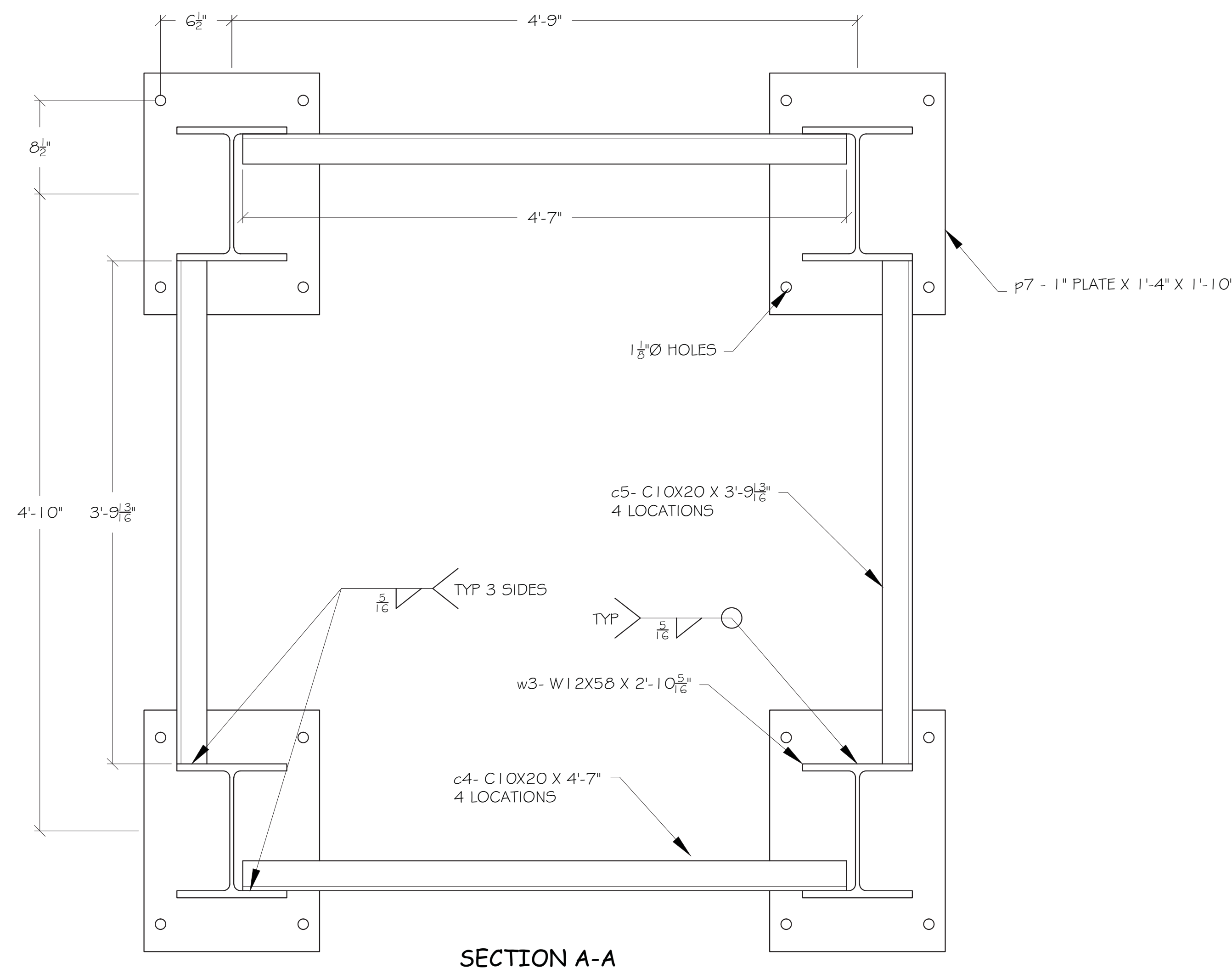


**P1 - POST ASSEMBLY - ELEVATION**

NOTE: BOLTS TO FRAME ASSEMBLY. SEE SHEETS 5 & 7



**SECTION B-B**



**SECTION A-A**

NIF WO 14210 **FOR APPROVAL**

CITY OF PORTLAND, MAINE PUBLIC BUILDINGS DIVISION OCEAN GATEWAY PIER 2			CONTRACTOR: PROCK MARINE FABRICATOR: NIF, INC		
REV	DATE	BY	DESCRIPTION		
0	01-09-15	JB	ISSUED FOR REVIEW		
<b>CATWALKS</b>					
PORTLAND			MAINE		
STEEL PEDESTAL LANDINGS PIER 2 - POST ASSEMBLY DETAILS					
SCALE: 1 1/2" = 1'-0"	DATE: 12-24-14	DRAWN: J. BRAGG			SHEET
		CHECK:			8
CAD FILE: SHDP_DRAWINGS.dwg				JOB 0303	