

NOTES:

- 1) 2 CATWALKS ARE SAME WITH EXCEPTION OF LIGHT POLES ARE ATTACHED TO NORTH SIDE AND CWI CATWALK HAS DIAMOND PLATE INSTALLED ON EXPANSION END. PLATE CAN BE INSTALLED AFTER BRIDGES HAVE BEEN INSTALLED.
- 2) HSS SECTION - ASTM A500 GRADE B
 CHANNEL & PLATE - ASTM A36 OR GREATER
 BOLTS - ASTM A325 TYPICAL
 SS 304 COUNTERSUNK WHERE NOTED
 GRATING - SERRATED STEEL BAR GRATING
- 3) ALL FABRICATED STEEL SHALL BE METALLIZED. GRATING SHALL BE GALVANIZED. BOLTS AND ANCHORS SHALL BE GALVANIZED UNLESS NOTED OTHERWISE.
- 4) COORDINATE WITH CONTRACTOR FOR LIFTING POINTS.
- 5) CATWALK SPANS SHALL BE CAMBERED PER CAMBER DIAGRAM ON SHEET 4.
- 6) ANTI BIRD WIRE SHALL BE INSTALLED ON TOP CHORDS OF CATWALKS. SEE NIF WO#14210, SHEET SK-100.
- 7) ANCHOR BOLT SIZES AND LENGTHS FOR LAMP POST (LP2) AND STEEL LANDINGS ACAN BE FOUND ON THE RESPECTIVE DETAIL SHEETS 4, 5 & 10.

BILL OF MATERIAL

QTY.	MK.	DESCRIPTION	REMARKS	WT
1	CW1	STEEL CATWALK	SEE NOTE 1	27035
1	CWr	STEEL CATWALK	SEE NOTE 1	26801
8	L1	BRIDGE LIGHT POLES		1015
1	L1	MOORING PLAT. LIGHT POLE		470
1	SP1	PIER 2 STEEL LANDING		4110
1	SP2	MOORING PLAT. STEEL LANDING		4400
1	EP1	EMBEDMENT PLATE		275
8	A1	KEEPER ANGLES		222
8		1 1/4" BOLTS W/N#W		

CITY OF PORTLAND, MAINE
 PUBLIC BUILDINGS DIVISION
 OCEAN GATEWAY PIER 2
 CONTRACTOR: PROCK MARINE
 FABRICATOR: NIF, INC

NIF WO 14210
 FA 1-26-15

REV	DATE	BY	DESCRIPTION
0	01-23-15	JB	ISSUED FOR REVIEW

CATWALKS

PORTLAND MAINE

ERECTION PLAN

PLANVIEW, ELEVATION & DETAILS

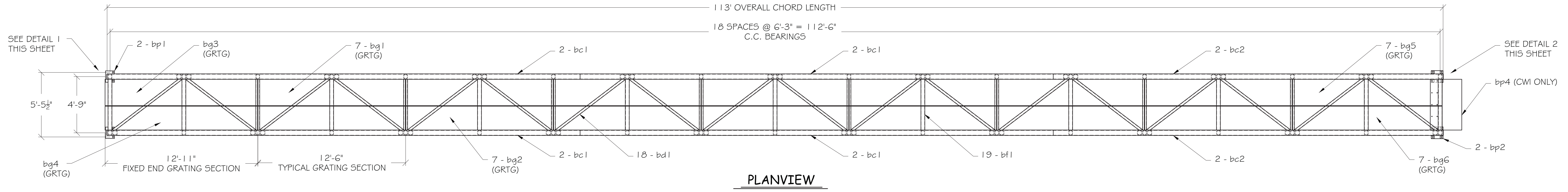
SCALE: 1" = 1'-0"
 DATE: 12-24-14
 DRAWN: J. BRAGG
 CHECK:

SHEET
1
JOB
0303

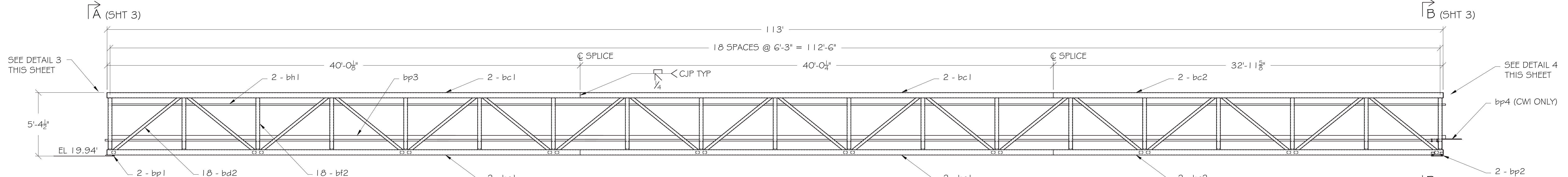
FOR APPROVAL

CAD FILE: SHDP DRAWINGS.dwg

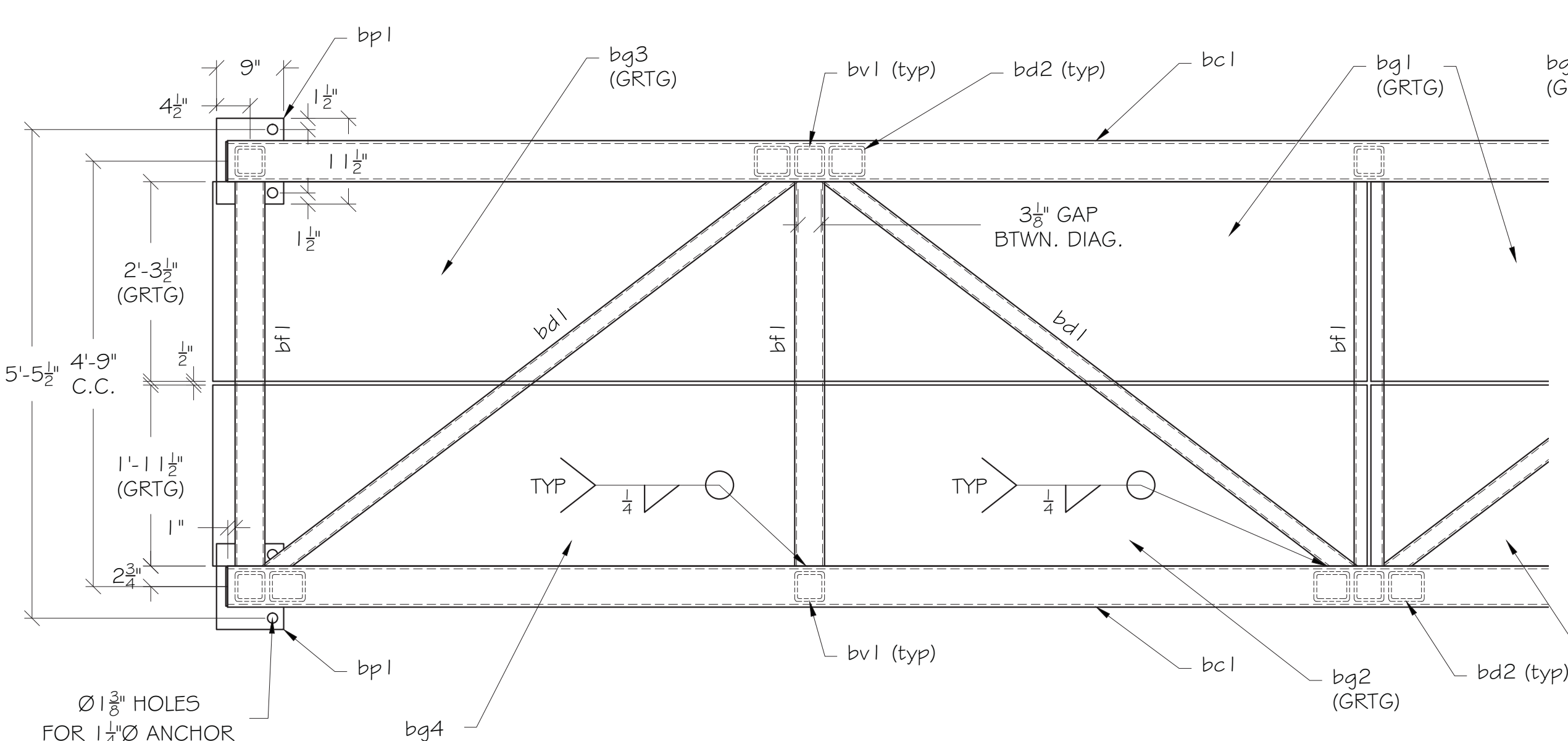




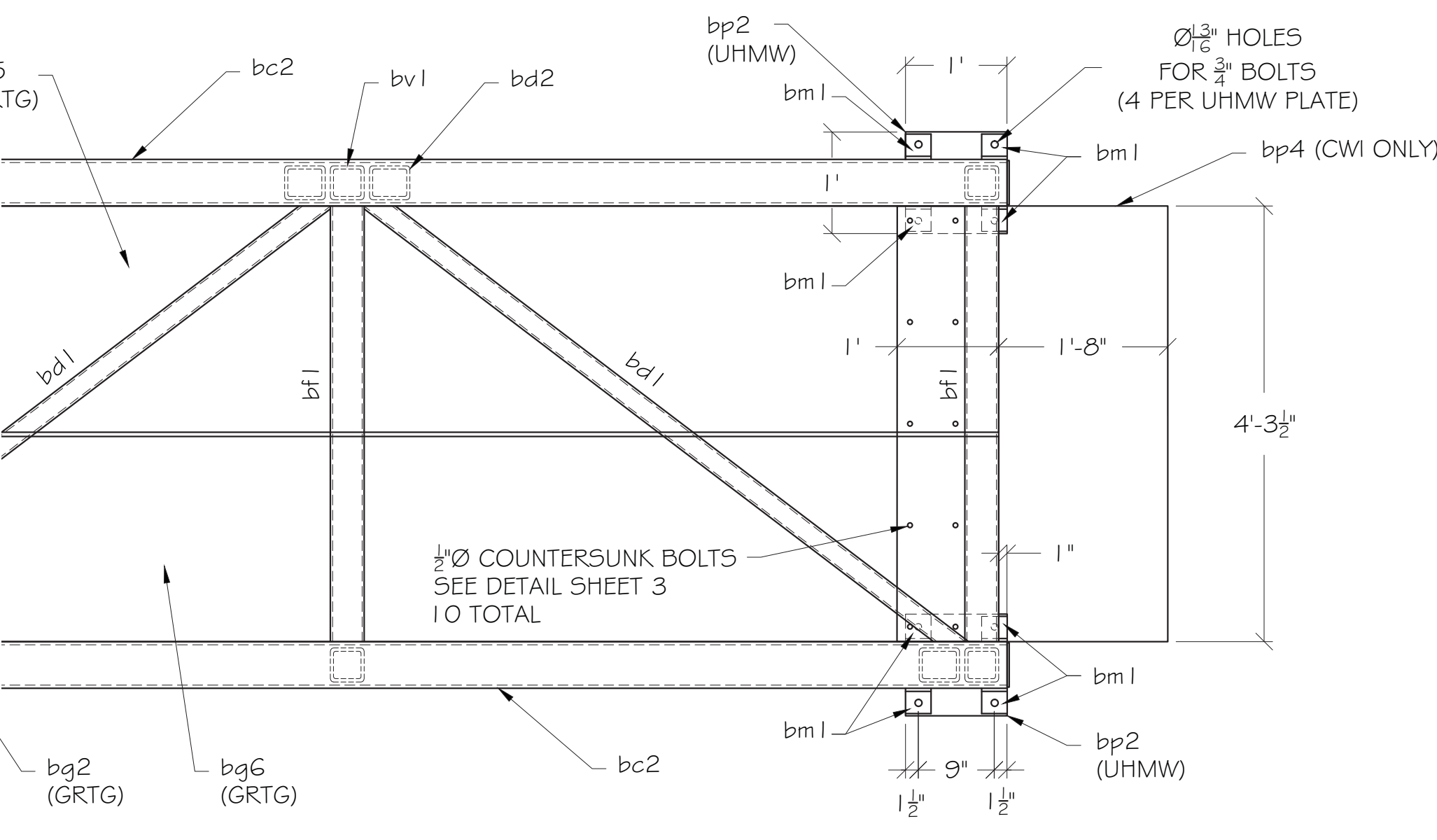
PLANVIEW



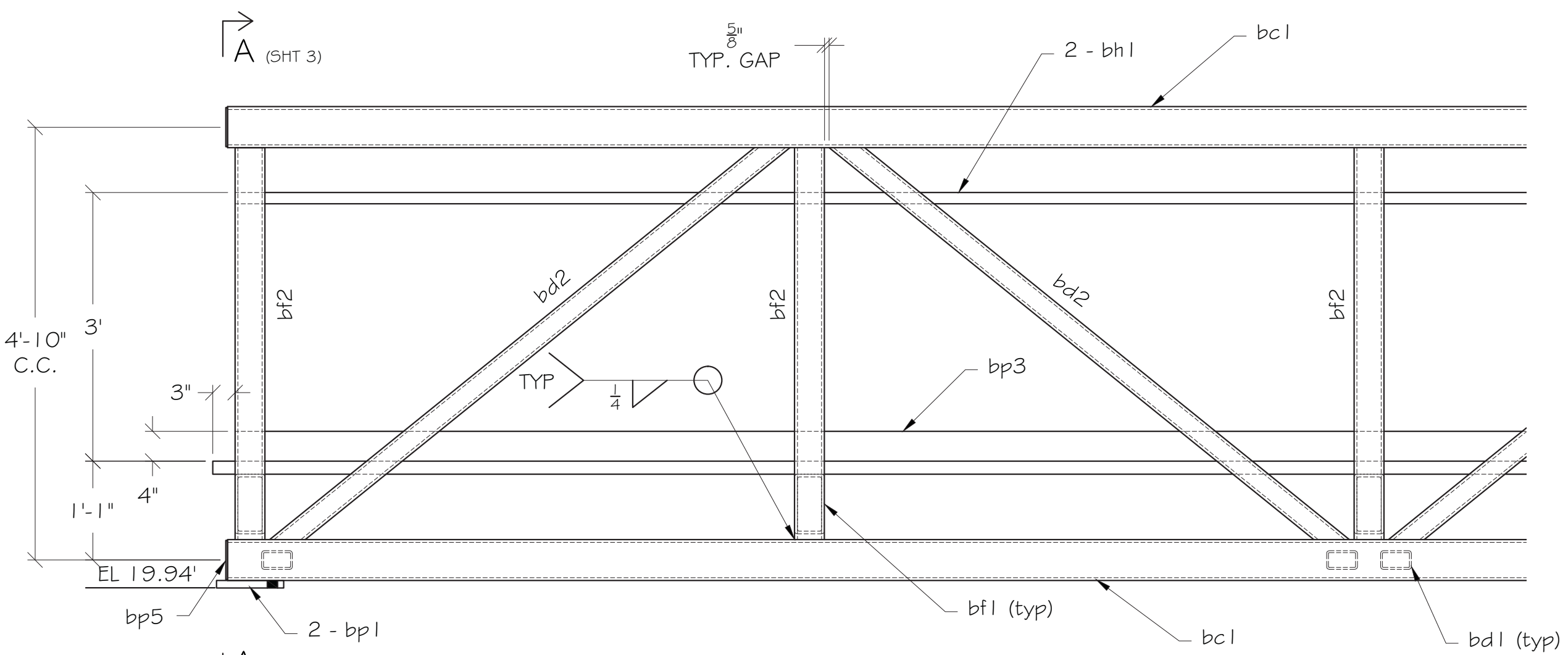
ELEVATION
LIGHT POLES NOT SHOWN



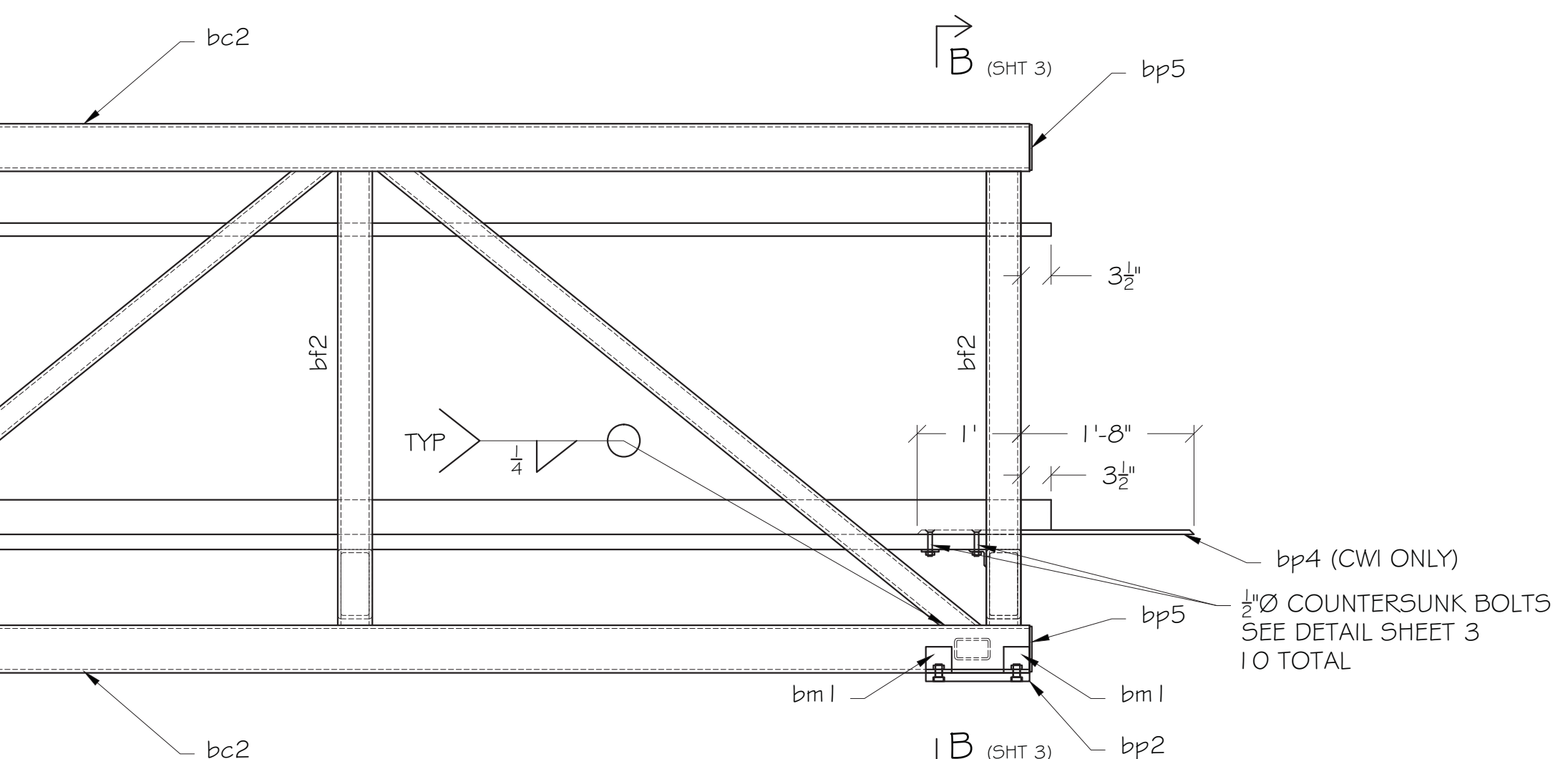
DETAIL 1 - PLANVIEW



DETAIL 2 - PLANVIEW



DETAIL 3 - ELEVATION



DETAIL 4 - ELEVATION

BILL OF MATERIAL

QTY.	MK.	DESCRIPTION	LENGTH	REMARKS	WT
1	CW1	STEEL CATWALK			
1	CW1	STEEL CATWALK			
16	bc1	H555 1/2 X 5 1/2 X 3/8	40'-0"	A500-GR.B	15936
8	bc2	H555 1/2 X 5 1/2 X 3/8	32'-1 1/2"	A500-GR.B	6566
36	bd1	H552 1/2 X 2 1/2 X 3/4	7'-4 3/8"	A500-GR.B	1644
72	bd2	H554 X 3 X 1/2	7'-3"	A500-GR.B	5496
38	bf1	H558 X 4 X 1/2	4'-3 1/2"	A500-GR.B	3098
76	bf2	H554 X 4 X 1 3/8	4'-4 1/2"	A500-GR.B	5044
14	bg1	GRTG 1 1/2 X 27 1/2	12'-5 1/2"	15W-4 SERRATED, GALV.	5525
14	bg2	GRTG 1 1/2 X 23 1/2	12'-5 1/2"	15W-4 SERRATED, GALV.	4722
2	bg3	GRTG 1 1/2 X 27 1/2	12'-10 3/4"	15W-4 SERRATED, GALV.	816
2	bg4	GRTG 1 1/2 X 23 1/2	12'-10 3/4"	15W-4 SERRATED, GALV.	698
2	bg5	GRTG 1 1/2 X 27 1/2	12'-7 3/4"	15W-4 SERRATED, GALV.	801
2	bg6	GRTG 1 1/2 X 23 1/2	12'-7 3/4"	15W-4 SERRATED, GALV.	684
2	bh1	H55 1/2 X 1 1/2 X 1 1/8	113'-1 1/2"	15W-4 SERRATED, GALV.	1220
16	bm1	L3X3X8	0'-3"	A36	29
4	bp1	1" PL X 9	0'-1 1/2"	A36	118
4	bp2	1" PL X 12	1'-0"	UHMW	19
2	bp3	3/8" PL X 4	113'-1 1/2"	A36	1155
1	bp4	1/2" PL X 32	4'-3 1/2"	A36, DIAMOND PATTERN	234
16	bp5	1/2" PL X 5 1/2	0'-5 1/4"	A36	31
TOTAL					53836
16		3/8" BOLT	0'-2"	A325	
10		1/2" S.S. BOLTS	0'-3"	COUNTERSUNK HEADS	

CITY OF PORTLAND, MAINE
PUBLIC BUILDINGS DIVISION
OCEAN GATEWAY PIER 2

CONTRACTOR: PROCK MARINE
FABRICATOR: NIF, INC

NIF WO 14210
FA 1-26-15

REV	DATE	BY	DESCRIPTION
0	01-22-15	JB	ISSUED FOR REVIEW

CATWALKS

PORTLAND MAINE

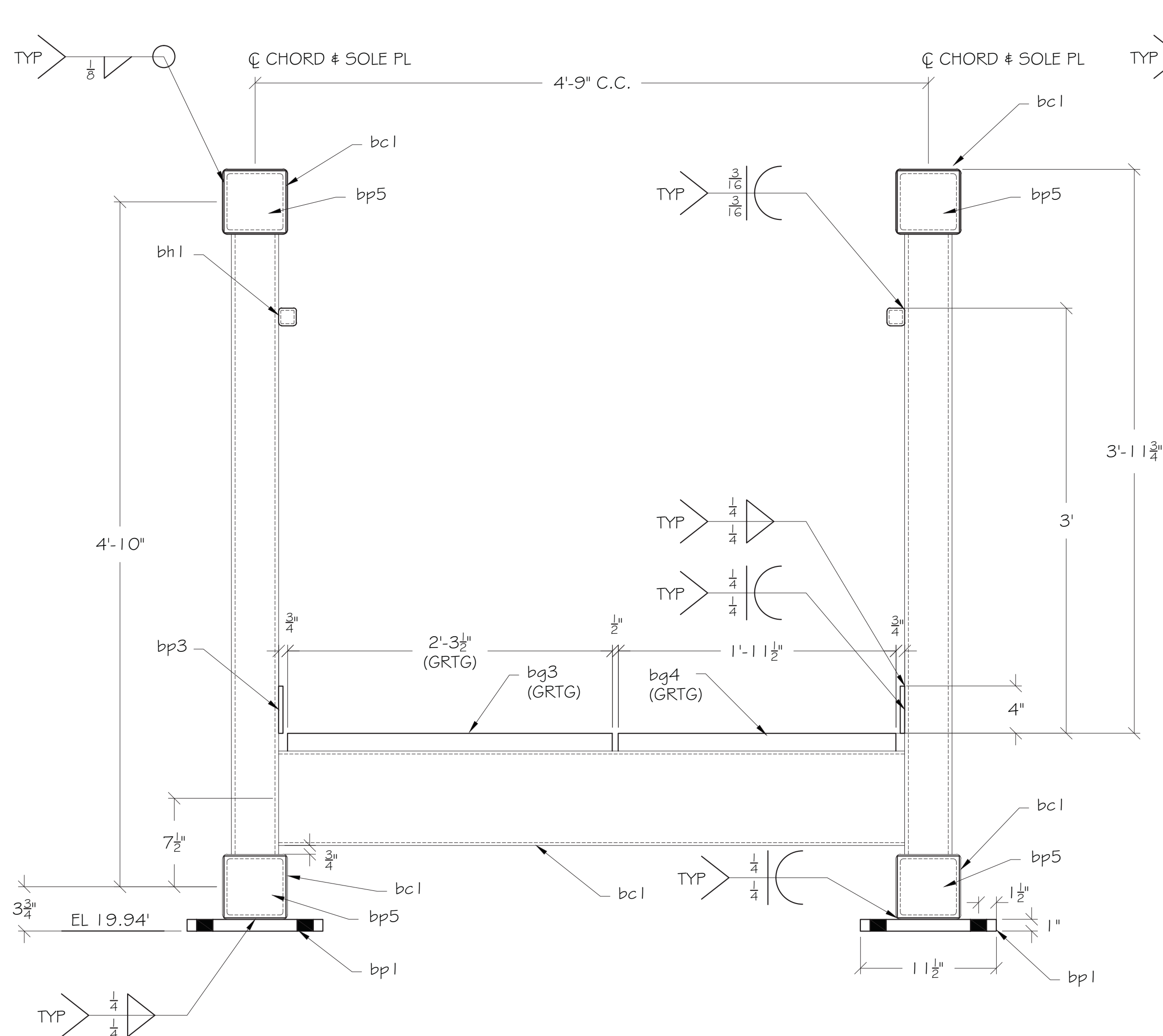
CATWALK

PLANVIEWS, & ELEVATIONS

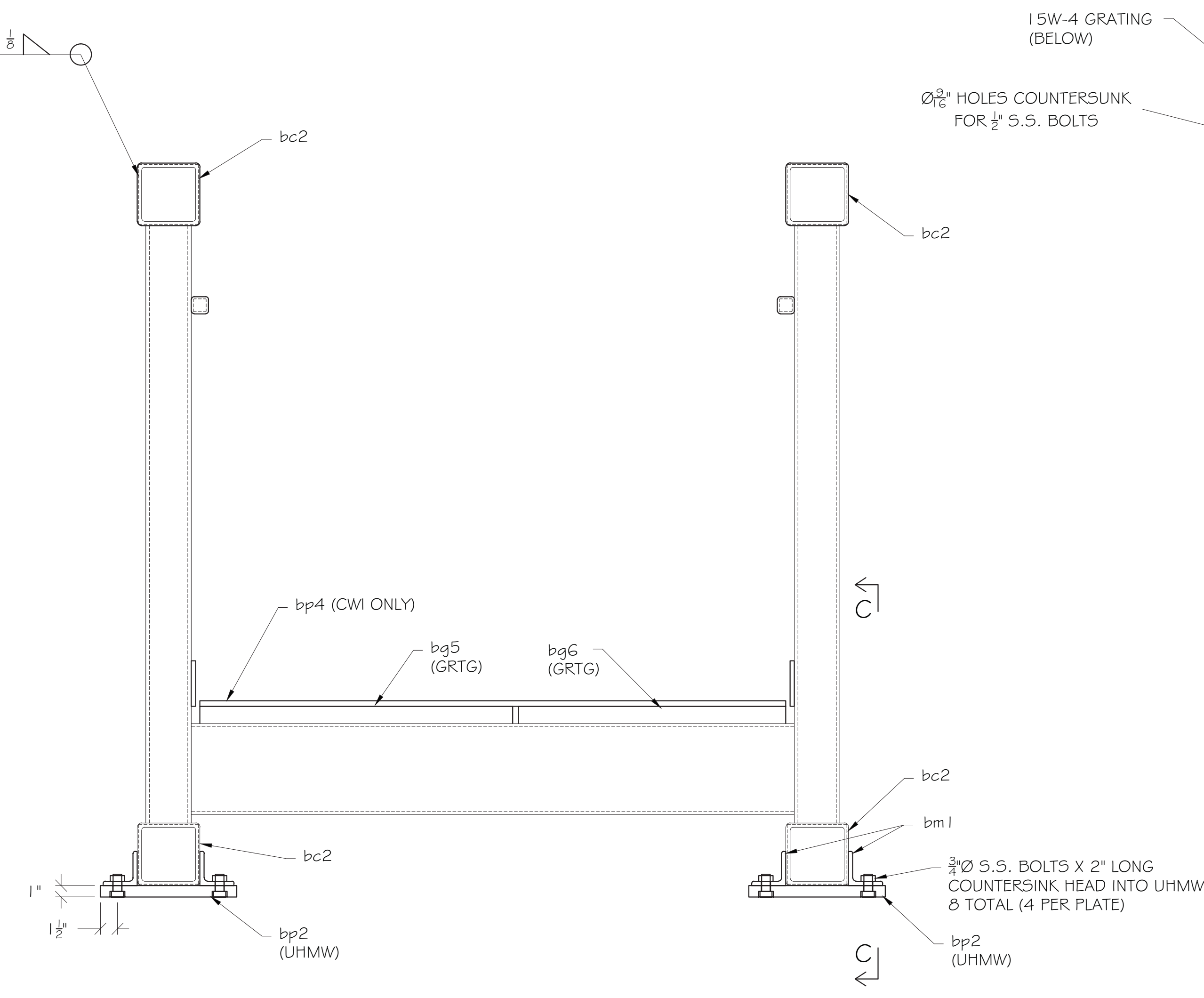
FOR APPROVAL

SCALE: 1" = 1'-0"	SHEET
DATE: 12-24-14	2
DRAWN: J. BRAGG	JOB
CHECK:	0303

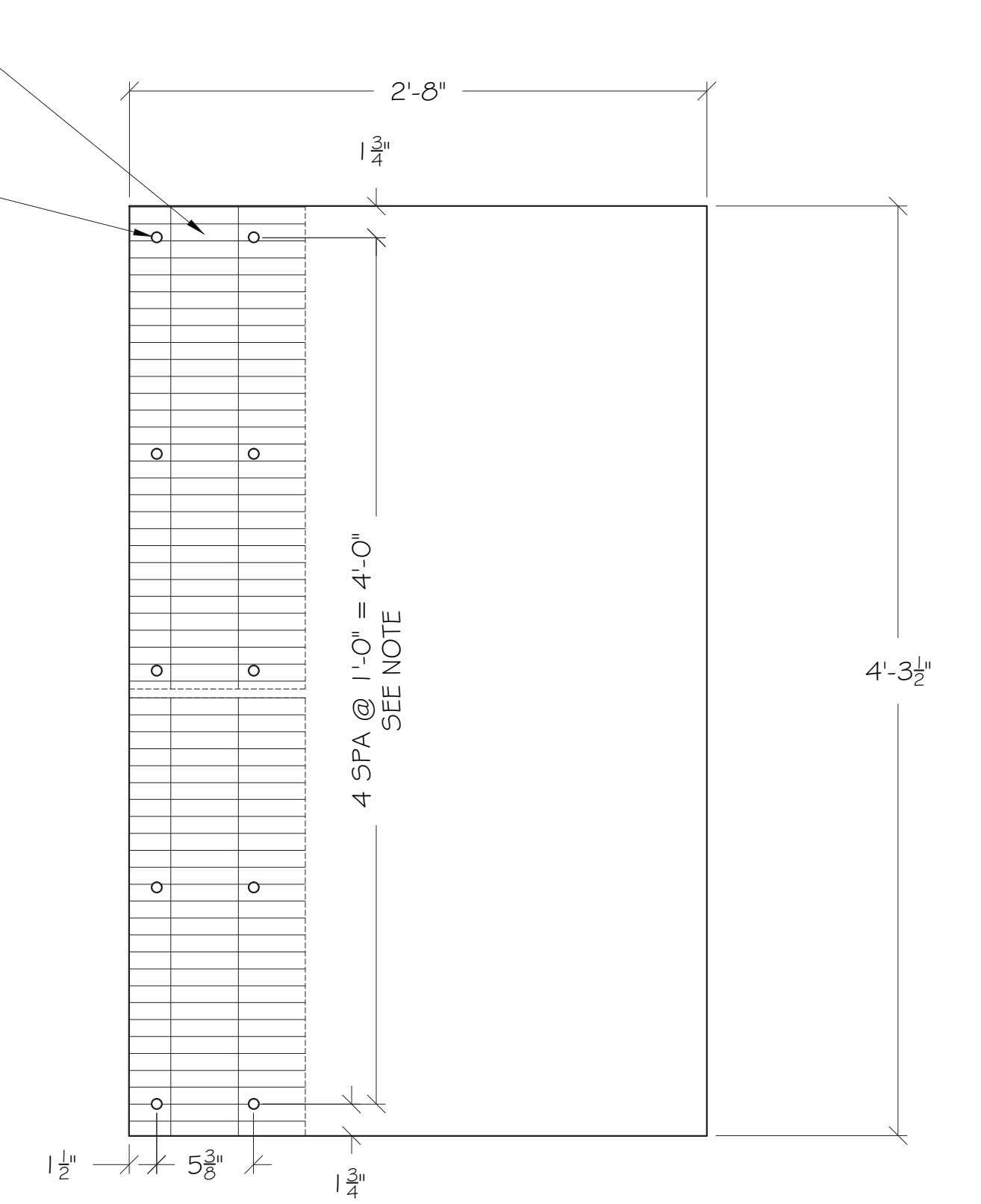
CAD FILE: SHOP DRAWINGS.dwg



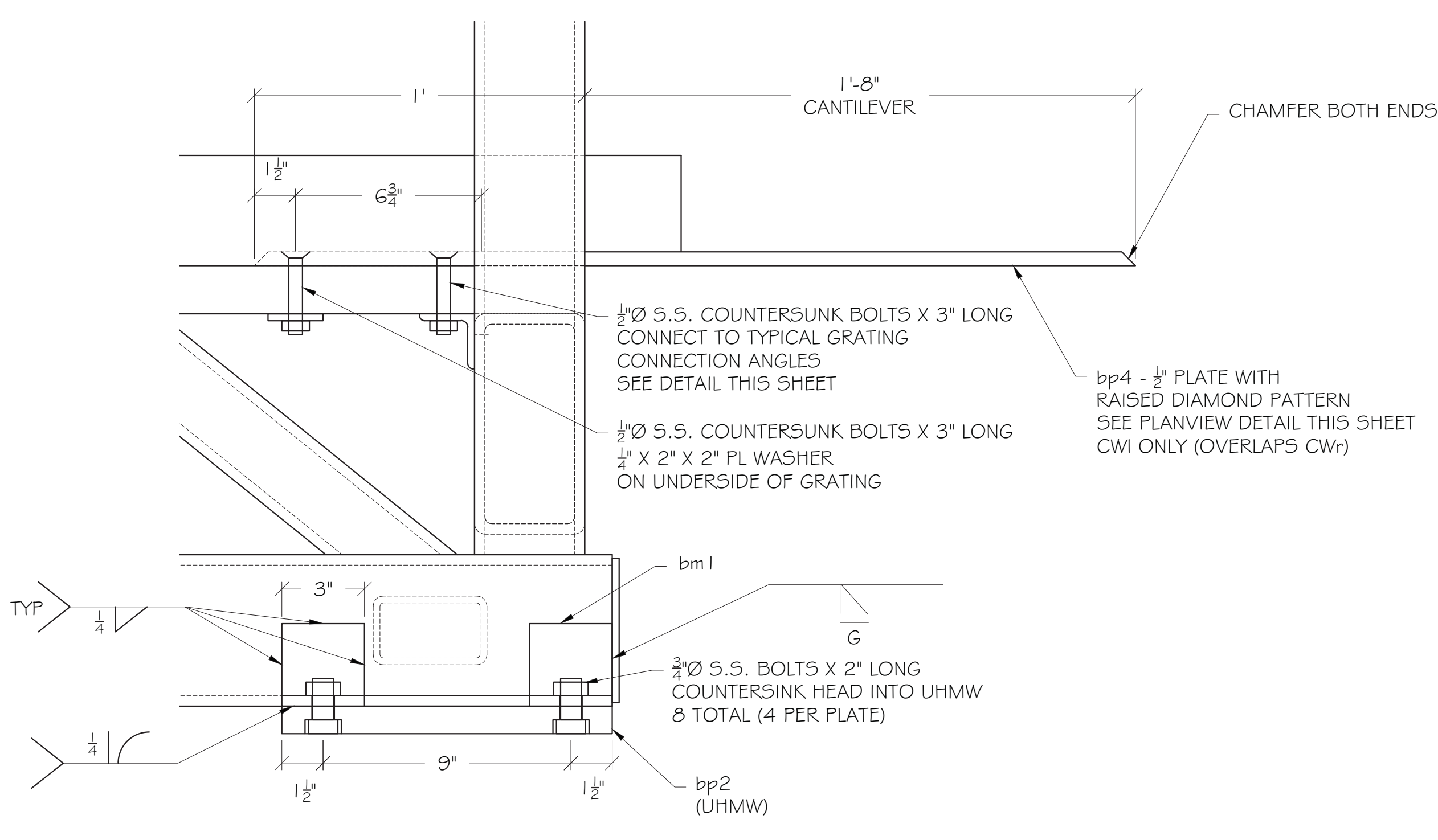
SECTION A-A (SHEET 2)
FIXED BEARING/LANDING END



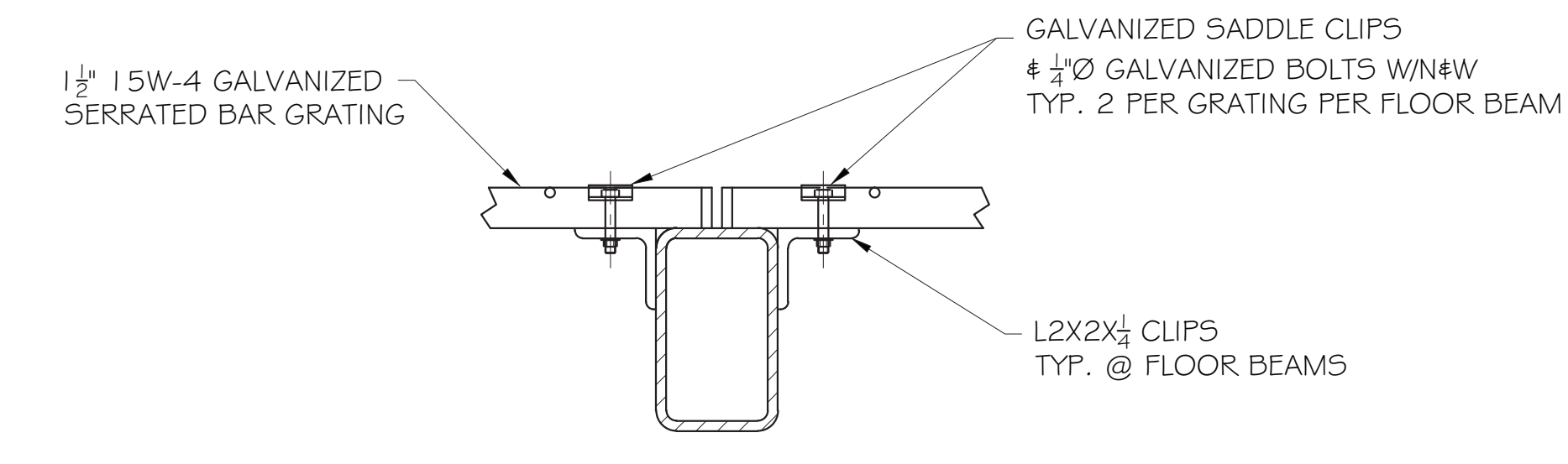
SECTION B-B (SHEET 2)
EXPANSION BEARING END
SAME AS SECTION A-A EXCEPT WHERE NOTED



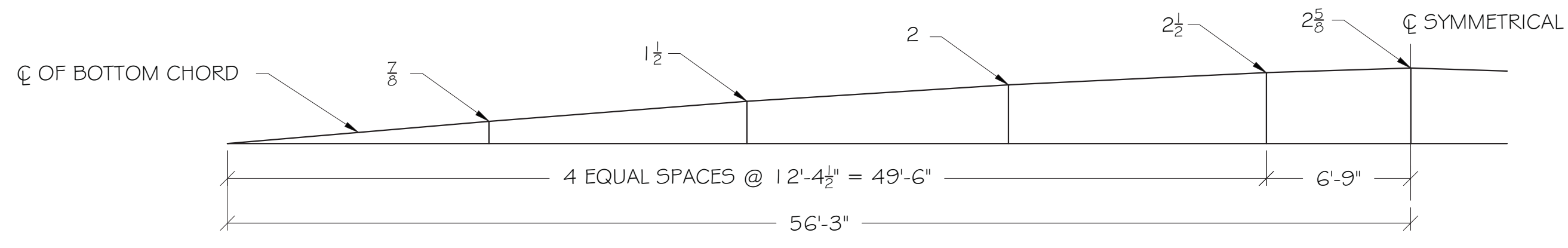
DIAMOND PLATE PLANVIEW DETAIL
NOTE: LINE UP PLATE OVER GRATING BEFORE DRILLING
HOLES MUST BE LOCATED TO MISS BARS
PLATE INSTALLED ONLY ON CWI CATWALK



SECTION C-C (THIS SHEET)



TYPICAL GRATING CONNECTION DETAIL
SIMILAR DETAIL AT END FLOOR BEAMS



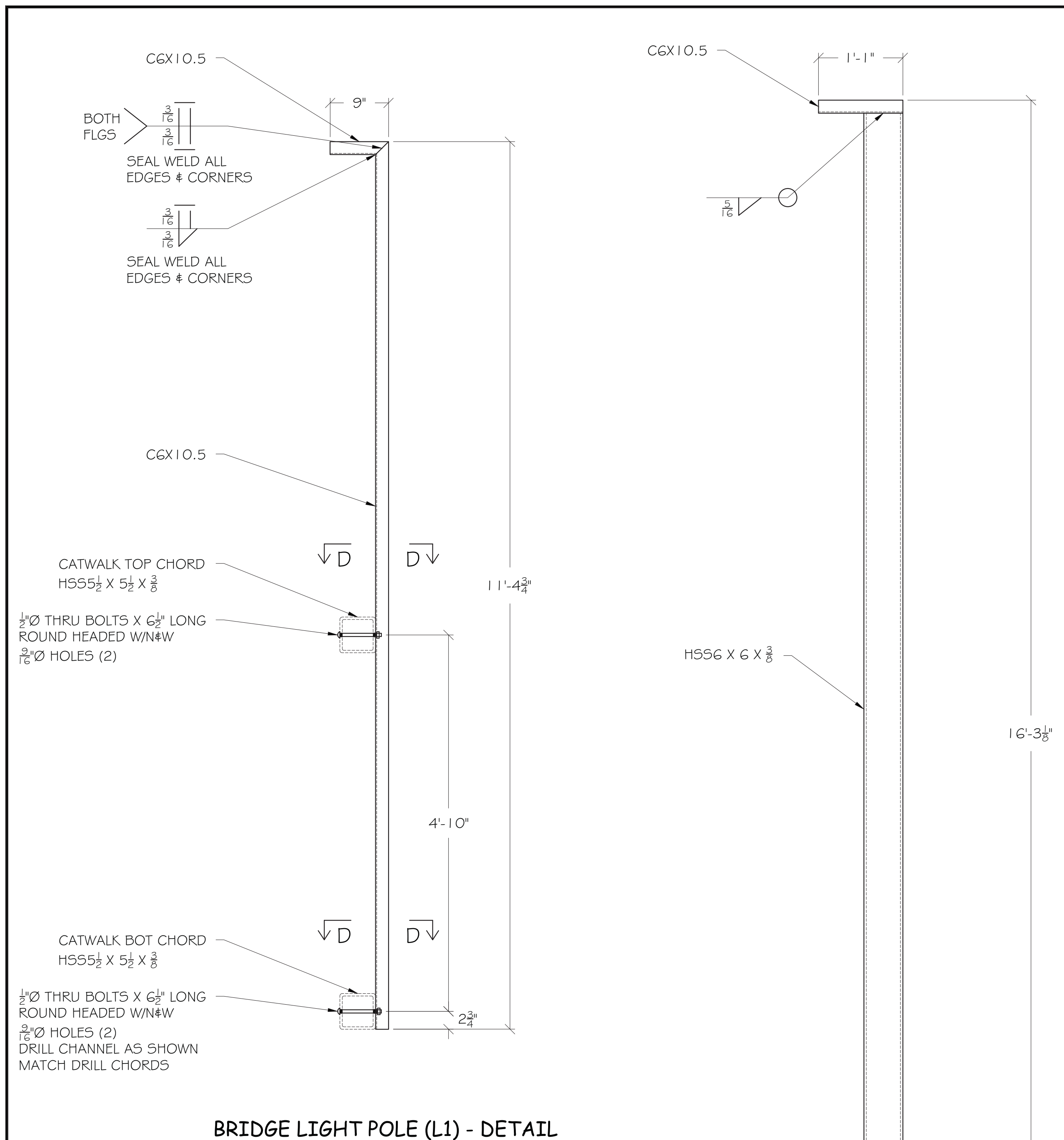
CAMBER DIAGRAM

NIF WO 14210
FA 1-26-15

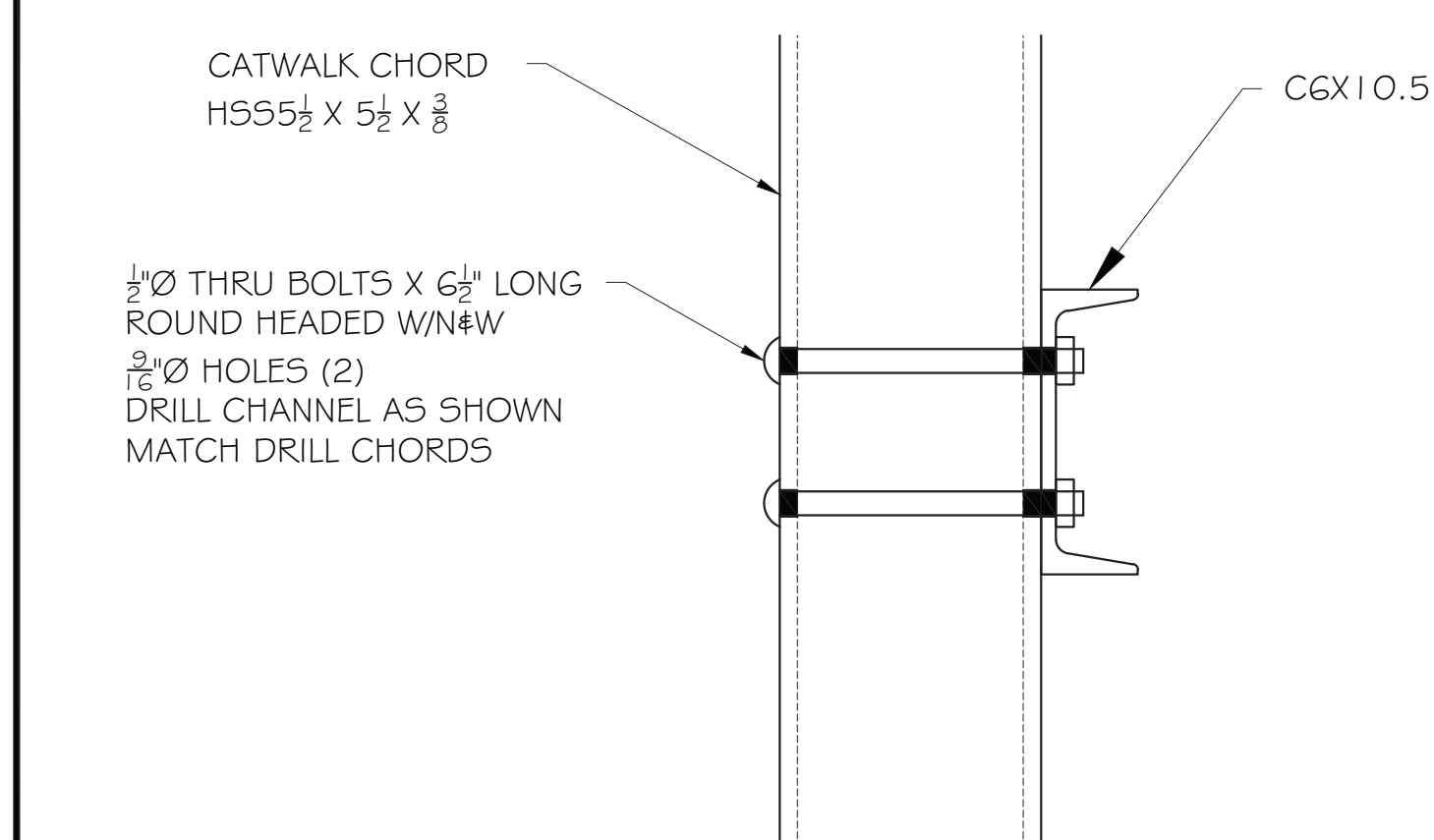
FOR APPROVAL

CITY OF PORTLAND, MAINE PUBLIC BUILDINGS DIVISION OCEAN GATEWAY PIER 2			
CONTRACTOR: PROCK MARINE FABRICATOR: NIF, INC			
0	01-22-15	JB	ISSUED FOR REVIEW
REV	DATE	BY	DESCRIPTION
CATWALKS			
PORTLAND		MAINE	
CATWALK			
SECTIONS, DETAILS & CAMBER DIAGRAM			
SCALE: 1" = 1'-0"	DATE: 12-24-14	DRAWN: J. BRAGG	CHECK:
SHEET 3			JOB 0303

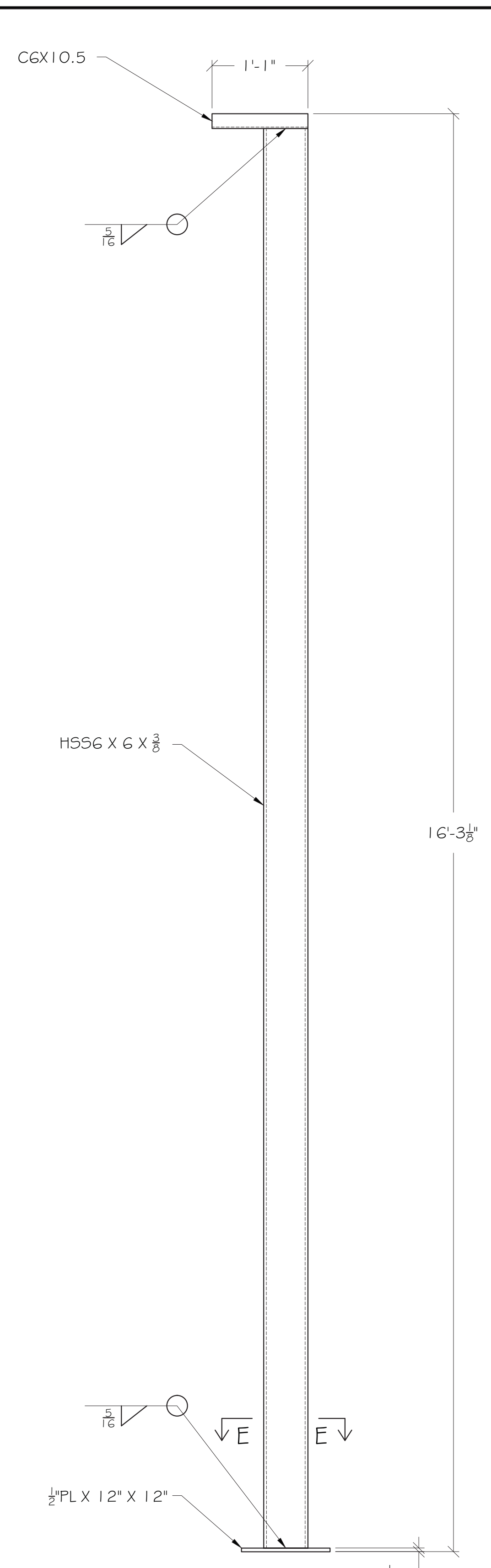
CAD FILE: SHDP DRAWINGS.dwg



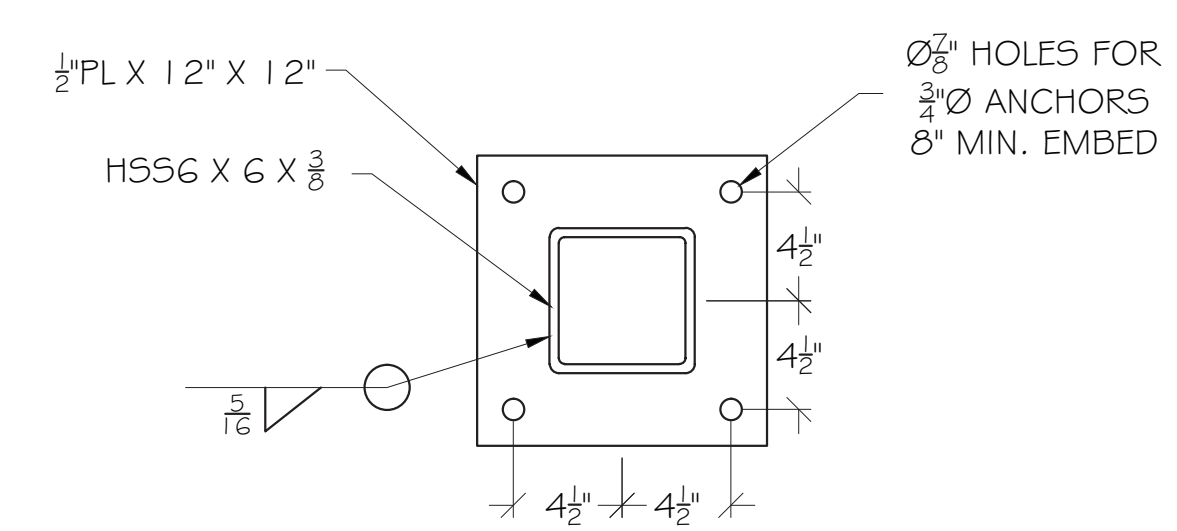
BRIDGE LIGHT POLE (L1) - DETAIL



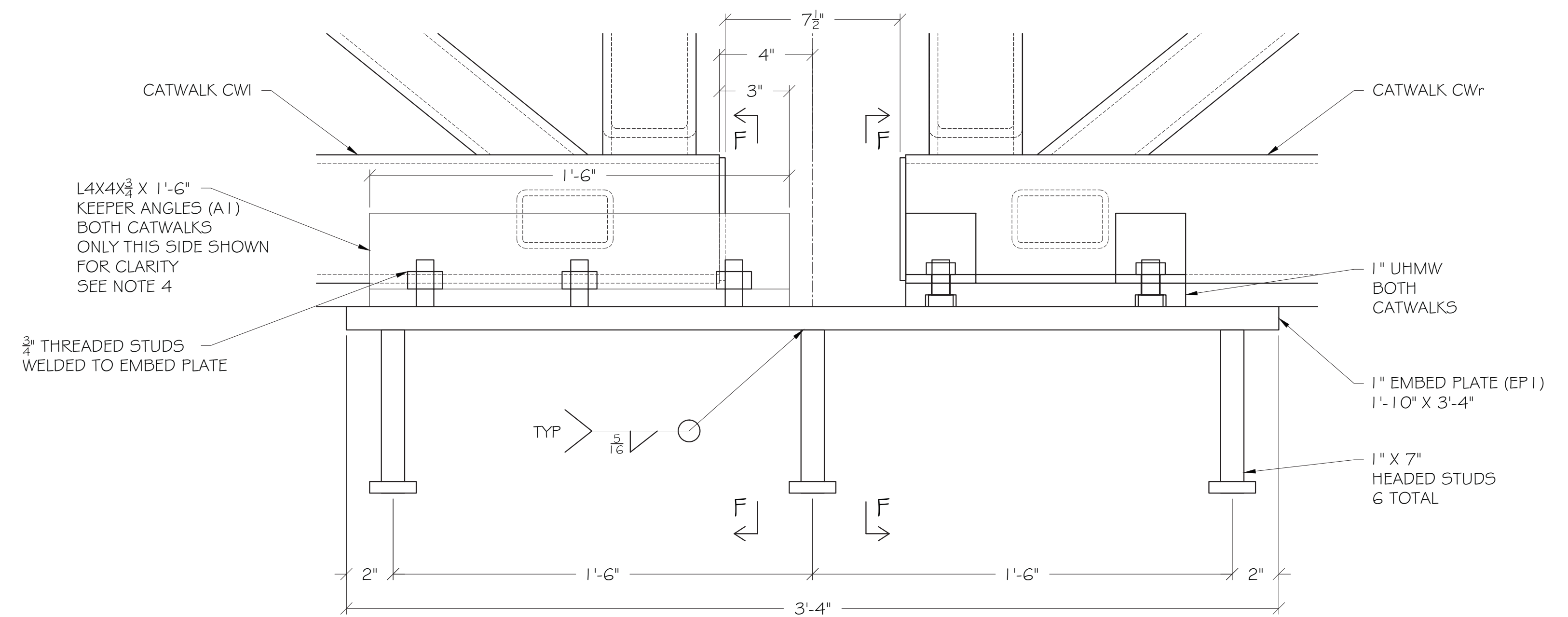
SECTION D-D



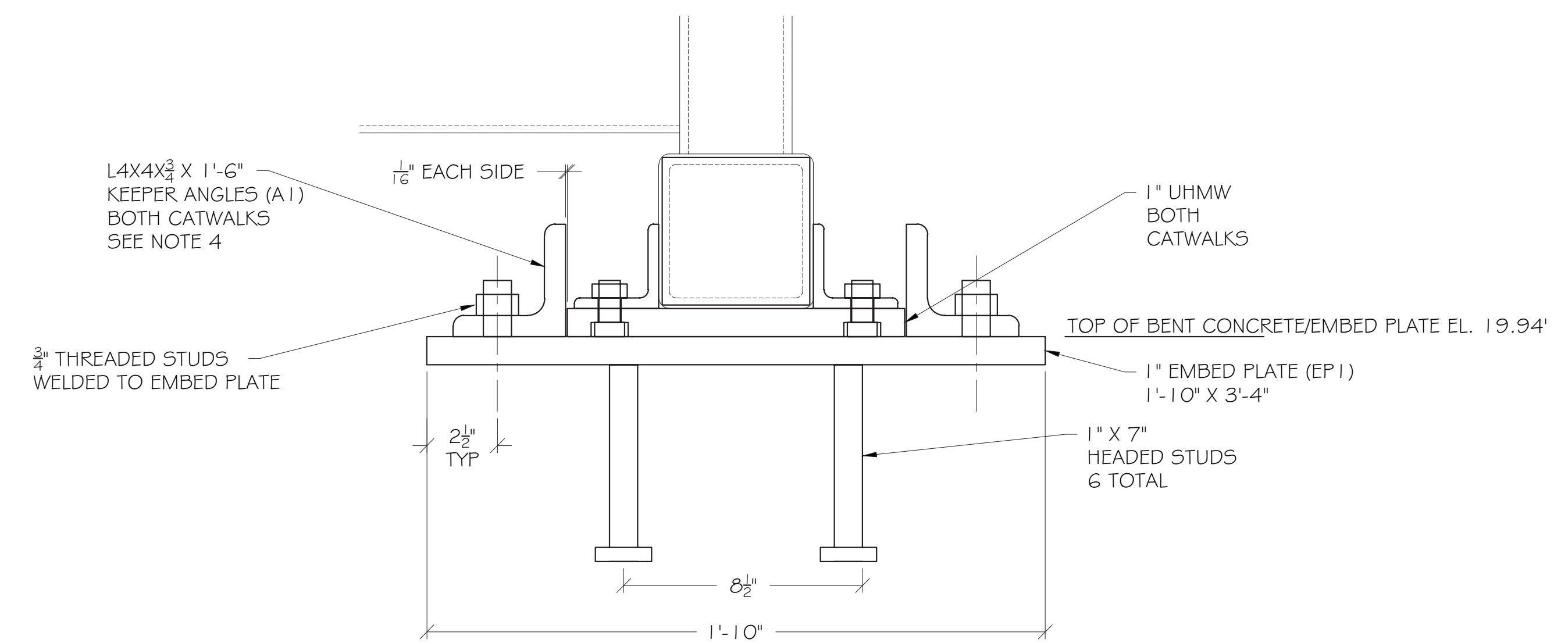
BRIDGE LIGHT POLE (L1) - DETAIL



SECTION E-E



EXPANSION BEARING DETAIL



SECTION F-F

NOTES:

- 1) MATERIALS:
 CHANNEL & PLATE - ASTM A36 OR GREATER
 BOLTS - ASTM A325 GALVANIZED
 NUTS - ASTM A563
 WASHERS - ASTM F436
- 2) COATINGS:
 FABRICATED STEEL - METALLIZED
 NUTS & WASHERS - GALVANIZED
- 3) COORDINATE LIGHT POLE HOLE LAYOUT WITH ELECTRICAL TO ACCOMODATE LIGHTING NEEDS.
- 4) INSTALL KEEPER ANGLES AFTER CATWALKS HAVE BEEN SET AND BOLTED TO LANDINGS. AS BUILT STUDS AND FABRICATE KEEPER ANGLES TO MAINTAIN 1/16" GAP BETWEEN ANGLE AND UHMW.

FOR APPROVAL

CITY OF PORTLAND, MAINE
 PUBLIC BUILDINGS DIVISION
 OCEAN GATEWAY PIER 2
 CONTRACTOR: PROCK MARINE
 FABRICATOR: NIF, INC

NIF WO 14210
 FA 1-26-15

REV	DATE	BY	DESCRIPTION
0	01-22-15	JB	ISSUED FOR REVIEW

CATWALKS
 PORTLAND MAINE

MISC DETAILS
 LIGHT POLES & EMBEDS

SCALE: 1" = 1'-0"
 DATE: 12-24-14
 DRAWN: J. BRAGG
 CHECK:

SHEET 4
 JOB 0303