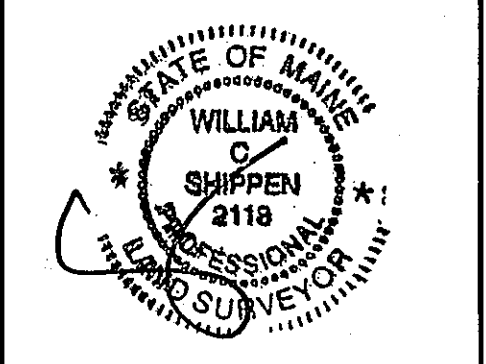
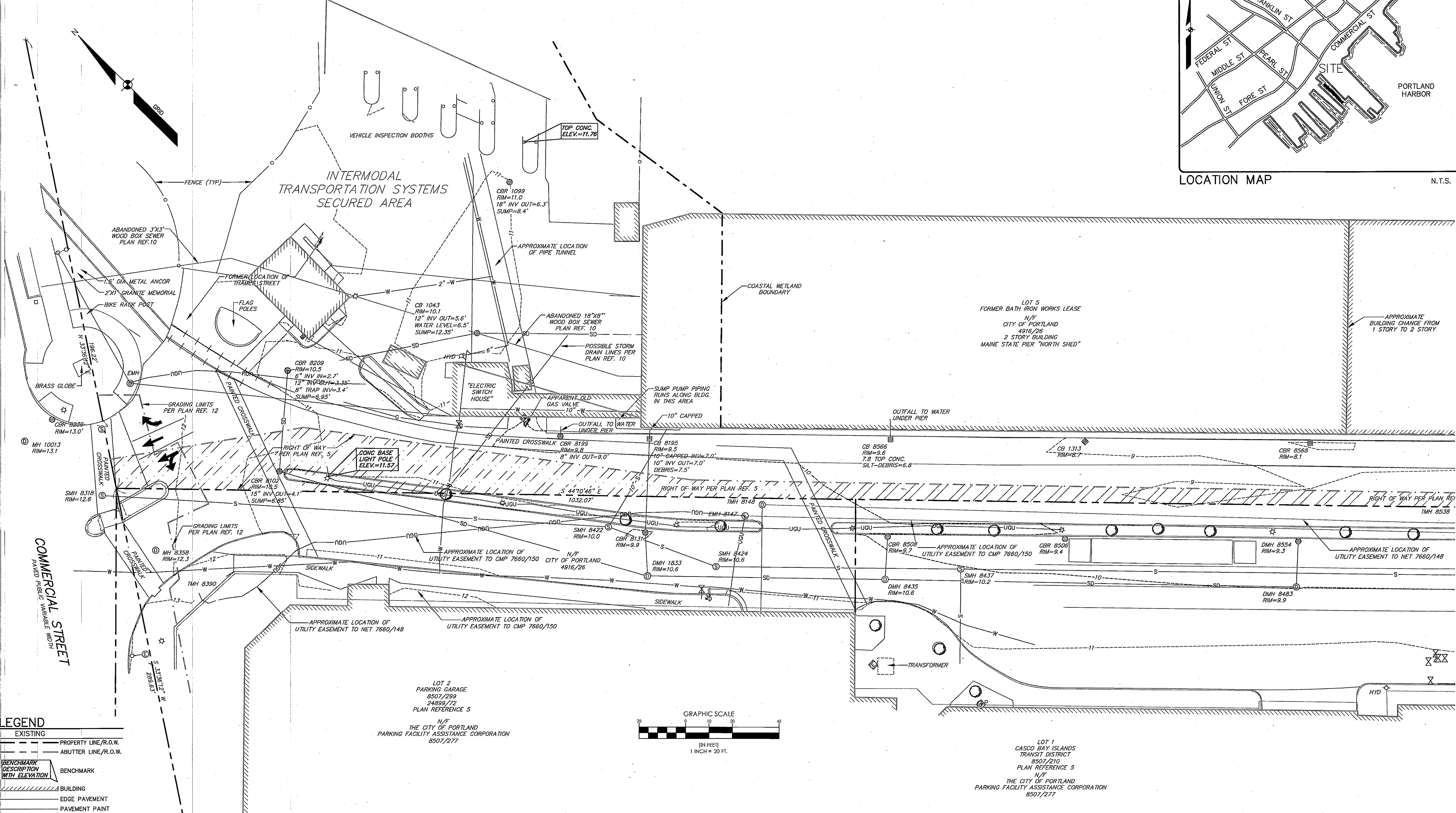


Project Title  
**NEW ENGLAND OCEAN CLUSTER HOUSE**  
 PORTLAND OCEAN TERMINAL, MAINE STATE PIER, PORTLAND, MAINE, 04101  
**SEBAGO**  
 TECHNICS  
 WWW.SEBAGOTECHNICS.COM  
 75 John Roberts Rd. Suite 5  
 South Portland, ME 04106  
 Tel. 207-200-2100



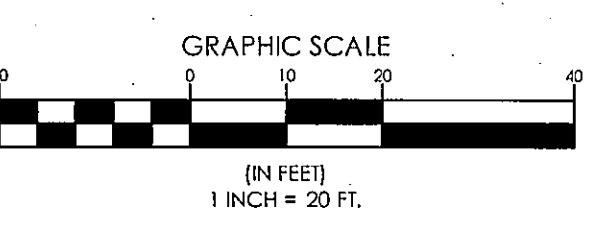
WILLIAM C. SHIPP PLS 2118  
 STI Project No. 15063  
 CSS Project No. 15004



**LEGEND**

EXISTING	
	PROPERTY LINE/R.O.W.
	ABUTTER LINE/R.O.W.
BENCHMARK DESCRIPTION WITH ELEVATION	
	BUILDING
	EDGE PAVEMENT
	PAVEMENT PAINT
	CURB LINE
	CHAIN LINK FENCE
	DECIDUOUS TREE
	BOLLARD
	SIGN
	RAILROAD
	GAS
	GAS METER
	GAS MANHOLE
	WATER
	WATER GATE VALVE
	WATER SHUT OFF
	HYDRANT
	SANITARY SEWER
	SANITARY MANHOLE
	STORM DRAIN
	DRAINAGE MANHOLE
	CATCH BASIN
	OVERHEAD UTILITY
	TRANSFORMER PAD
	LIGHT POLE
	UTILITY POLE
	GUY WIRE

- PLAN REFERENCES**
- RECORDING PLAT SHEET 1 OF 3 OCEAN GATEWAY COMMERCIAL STREET AND FORE STREET, PORTLAND, MAINE MADE FOR RECORD OWNERS CITY OF PORTLAND AND STATE OF MAINE DATED AUGUST 4, 2004 BY OWEN HASKELL, INC. AND RECORDED IN THE CUMBERLAND COUNTY REGISTRY OF DEEDS (CCRD) IN PLAN BOOK 204 PAGE 622.
  - RECORDING PLAT SHEET 2 OF 3 OCEAN GATEWAY COMMERCIAL STREET AND FORE STREET, PORTLAND, MAINE MADE FOR RECORD OWNERS CITY OF PORTLAND AND STATE OF MAINE DATED AUGUST 4, 2004 BY OWEN HASKELL, INC. AND RECORDED IN PLAN BOOK 204 PAGE 623 CCRD.
  - RECORDING PLAT SHEET 3 OF 3 OCEAN GATEWAY COMMERCIAL STREET AND FORE STREET, PORTLAND, MAINE MADE FOR RECORD OWNERS CITY OF PORTLAND AND STATE OF MAINE DATED AUGUST 4, 2004 BY OWEN HASKELL, INC. AND IN PLAN BOOK 204 PAGE 624 CCRD.
  - MAINE STATE PIER AND VICINITY CITY OF PORTLAND CUMBERLAND COUNTY STATE OF MAINE DATED 11-7-1985 BY SMRT AND RECORDED IN PLAN BOOK 161 PAGE 21 (SHEET 1 OF 2) CCRD.
  - MAINE STATE PIER AND VICINITY CITY OF PORTLAND CUMBERLAND COUNTY STATE OF MAINE REVISED SUBDIVISION PLAN DATED NOV. 1985 BY SMRT AND RECORDED IN PLAN BOOK 161 PAGE 21 (SHEET 2 OF 2) CCRD.
  - MAINE STATE PIER AND VICINITY CITY OF PORTLAND CUMBERLAND COUNTY STATE OF MAINE AMENDED REVISED SUBDIVISION PLAN DATED 9-20-88 BY SMRT AND RECORDED IN PLAN BOOK 174 PAGE 8 CCRD.
  - CASCO BAY FERRY TERMINAL PORTLAND MAINE UTILITY PLAN NORTH, AS BUILT DRAWING 2-3-87 ON FILE WITH THE CITY OF PORTLAND ENGINEERING DEPARTMENT.
  - CASCO BAY FERRY TERMINAL PORTLAND MAINE UTILITY PLAN SOUTH, AS BUILT DRAWING 2-3-87 ON FILE WITH THE CITY OF PORTLAND ENGINEERING DEPARTMENT.
  - CASCO BAY FERRY TERMINAL PORTLAND MAINE STORM DRAIN AND SANITARY SEWER PROFILES ON FILE WITH THE CITY OF PORTLAND ENGINEERING DEPARTMENT.
  - STATE OF MAINE DEPARTMENT OF TRANSPORTATION BUREAU OF WATERWAYS AND MAINE PORT AUTHORITY PORTLAND CUMBERLAND COUNTY DATED JULY 1974 SHEET 1 OF 8 DOT FILE NO. 3-238-A.
  - STATE OF MAINE DEPARTMENT OF TRANSPORTATION FRANKLIN STREET PLANS PROJECT NUMBER 0685(1) SHEET 3 OF 3 REVISED AS BUILT DATED 12-7-89.
  - STATE OF MAINE DEPARTMENT OF TRANSPORTATION PROJECT NUMBER 009215.00 CITY OF PORTLAND OCEAN GATEWAY PHASE 1 DEMOLITION PLAN DATED 10-11-04: SHEET C100 EXISTING CONDITIONS PLAN SHEET C201 DEMOLITION PLAN SHEET C216 OUTFALL PLAN AND PROFILES SHEET C217 UTILITY PLAN 1 SHEET E101 ELECTRICAL SITE DEMOLITION-1



- PLAN REFERENCES**
- CASCO BAY FERRY TERMINAL PORTLAND MAINE UTILITY PLAN NORTH, AS BUILT DRAWING 2-3-87 ON FILE WITH THE CITY OF PORTLAND ENGINEERING DEPARTMENT.
  - CASCO BAY FERRY TERMINAL PORTLAND MAINE UTILITY PLAN SOUTH, AS BUILT DRAWING 2-3-87 ON FILE WITH THE CITY OF PORTLAND ENGINEERING DEPARTMENT.
  - CASCO BAY FERRY TERMINAL PORTLAND MAINE STORM DRAIN AND SANITARY SEWER PROFILES ON FILE WITH THE CITY OF PORTLAND ENGINEERING DEPARTMENT.
  - STATE OF MAINE DEPARTMENT OF TRANSPORTATION BUREAU OF WATERWAYS AND MAINE PORT AUTHORITY PORTLAND CUMBERLAND COUNTY DATED JULY 1974 SHEET 1 OF 8 DOT FILE NO. 3-238-A.
  - STATE OF MAINE DEPARTMENT OF TRANSPORTATION FRANKLIN STREET PLANS PROJECT NUMBER 0685(1) SHEET 3 OF 3 REVISED AS BUILT DATED 12-7-89.
  - STATE OF MAINE DEPARTMENT OF TRANSPORTATION PROJECT NUMBER 009215.00 CITY OF PORTLAND OCEAN GATEWAY PHASE 1 DEMOLITION PLAN DATED 10-11-04: SHEET C100 EXISTING CONDITIONS PLAN SHEET C201 DEMOLITION PLAN SHEET C216 OUTFALL PLAN AND PROFILES SHEET C217 UTILITY PLAN 1 SHEET E101 ELECTRICAL SITE DEMOLITION-1

- GENERAL NOTES**
- THE RECORD OWNER OF THE PARCEL IS THE CITY OF PORTLAND BY DEED DATED FEBRUARY 1, 1992 AND RECORDED IN THE CUMBERLAND COUNTY REGISTRY OF DEEDS IN BOOK 4916 PAGE 26.
  - THE SURVEYED PARCEL IS SHOWN AS A PORTION OF LOTS 3 AND 4, BLOCK A ON THE CITY OF PORTLAND ASSESSORS MAP 444.
  - BEARINGS ARE GRID NORTH BASED ON CONTROL POINTS FOUND AS NOTED ON PLAN REFERENCE 1.

**CITY REVIEW**  
 May 8, 2015

**TOPOGRAPHIC SURVEY**

Scale:  
 Drawing Number  
**C1.0**