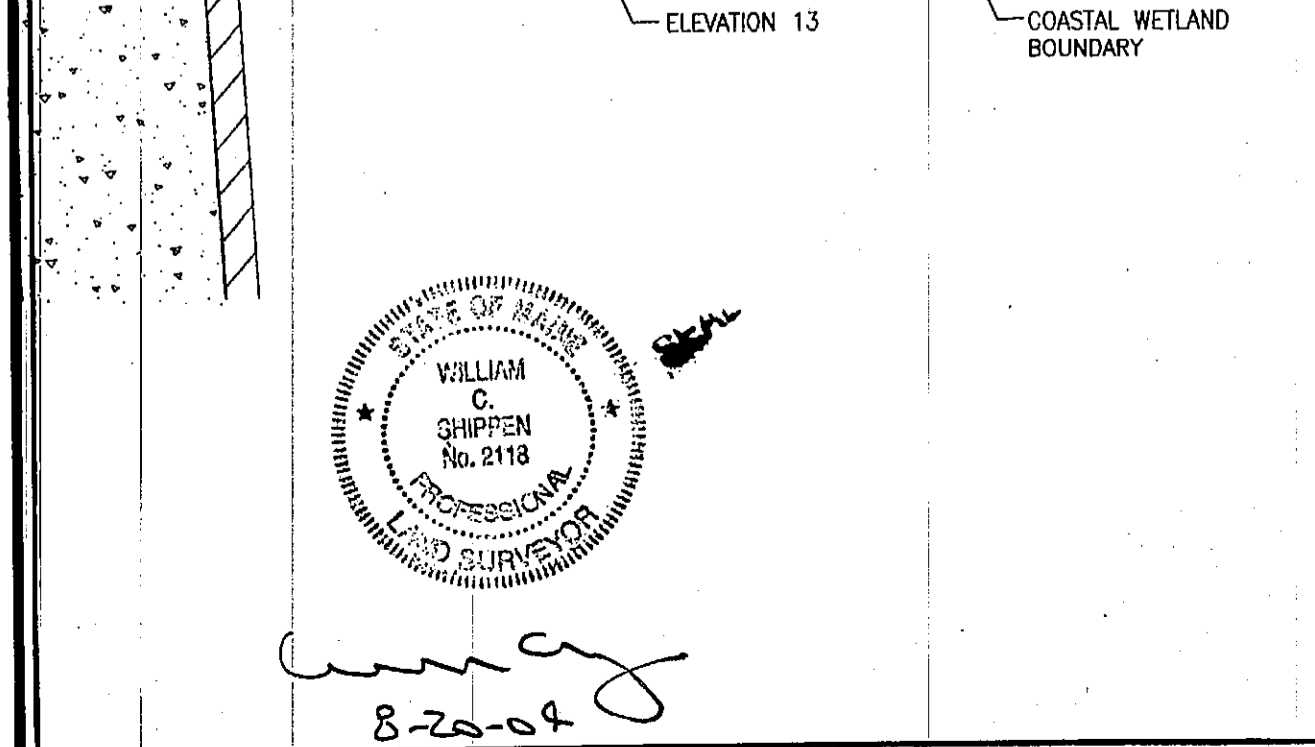
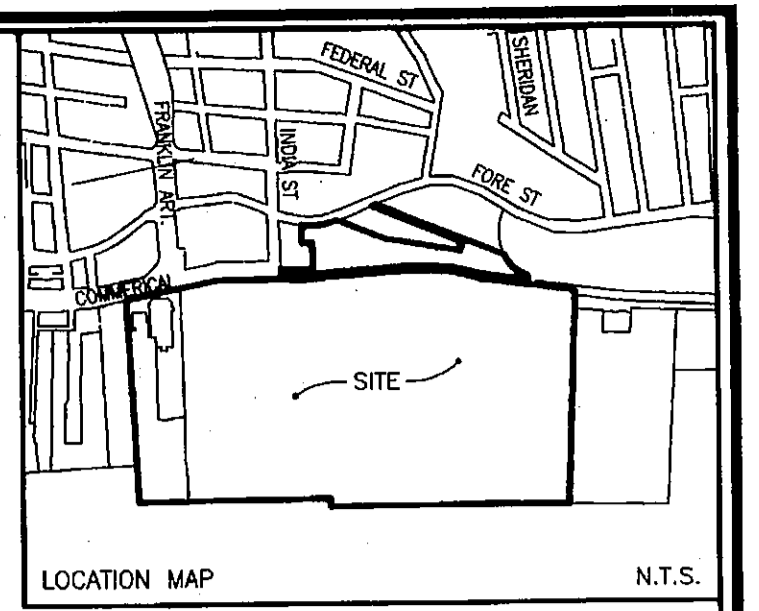


W&C BASELINE CURVE TABLE

CURVE	RADIUS	LENGTH	DELTA	CHORD BRG	CHORD DIST
BLC1	350.00'	95.01'	15° 33' 10"	S 49° 22' 13" W	94.71'
BLC2	200.00'	18.50'	5° 17' 58"	N 54° 29' 49" E	18.49'
BLC3	200.00'	18.01'	5° 09' 36"	N 49° 16' 02" E	18.01'
BLC4	1000.00'	114.08'	6° 32' 11"	N 43° 08' 54" E	114.02'
BLC5	1000.00'	32.84'	1° 52' 53"	S 40° 49' 15" W	32.83'
BLC6	1000.00'	81.24'	4° 39' 18"	S 44° 05' 20" W	81.22'

W&C BASELINE LINE TABLE

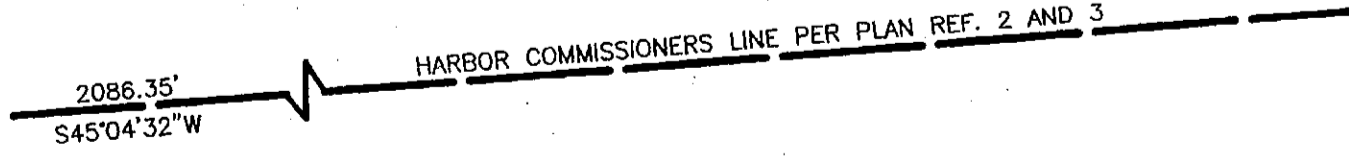
LINE	BEARING	DIST.
BLL1	N 57° 08' 48" E	78.58'
BLL2	N 46° 41' 14" E	105.42'
BLL3	N 46° 24' 59" E	130.31'
BLL4	N 46° 24' 59" E	108.11'
BLL5	N 47° 28' 43" E	330.31'



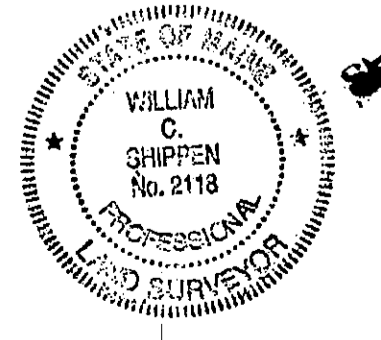
OCEAN GATEWAY - MDOT 26 FOOT CORRIDOR EASEMENTS & CROSSINGS

- VARIABLE WIDTH PEDESTRIAN AND BICYCLE EASEMENTS
- NORTHEASTERLY LINE OF INDIA ST AT 11+95.81, 39.00' RT TO SOUTHEASTERLY LINE OF PROPOSED STREET RUNNING NORTHEASTERLY FROM INDIA STREET AT PT 16+73.98, 39.00' RT.
  - CROSSING RAILWAY STARTING AT 22+40.61, 34.53' RT TO MATCH POINT WITH EXISTING EASTERN PROMENADE TRAIL AT 24+31.45, 51.39' RT.
- VEHICULAR TRAFFIC, PEDESTRIAN, & UTILITY CROSSINGS
- OPPOSITE PROPOSED STREET RUNNING SOUTHEASTERLY FROM FORE STREET  
LINE 15+36.64, 56.94' RT/15+62.51, 33.47' RT TO  
LINE 16+35.36, 64.45' RT/16+36.29, 38.47' RT.
  - OCEAN GATEWAY NORTHERLY ENTRANCE  
LINE 19+73.19, 65.00' RT/19+74.12, 39.00' RT TO  
LINE 20+09.29, 65.00' RT/20+11.14, 39.00' RT.
  - CROSSING TO NORTHERLY PARKING AREA  
LINE 20+77.02, 39.00' RT/20+78.99, 65.00' RT TO  
LINE 21+02.58, 39.00' RT/21+03.00, 65.00' RT.
- 30 FOOT WIDE STORM DRAIN EASEMENT FROM DMH-5  
LINE 18+40.48, 39.00' RT/ 18+44.99, 65.00' RT TO  
LINE 18+70.93, 39.00' RT/ 18+75.43, 65.00' RT.
  - 30 FOOT WIDE STORM DRAIN EASEMENT (15" & 36" STORM DRAINS)  
LINE 24+05.00, 20.33' RT/ 24+16.83, 46.03' RT TO  
LINE 24+37.63, 19.48' RT/ 24+49.46, 45.18' RT.
  - EXISTING OVERHEAD ELECTRIC - LIGHTING ALONG FORMER BIW FENCE  
11+96.54, 36.33' RT TO  
12+85.89, 41.51' RT TO  
14+24.36, 38.21' RT TO  
15+57.96, 32.98' RT.
  - EXISTING OVERHEAD ELECTRIC TO PROPOSED PARKING GARAGE PARCEL  
12+79.49, 42.72' RT TO  
13+09.38, 27.00' RT.
  - EXISTING OVERHEAD ELECTRIC - NORTHERLY PARKING AREA LIGHTING  
21+01.86, 39.00' RT TO  
21+60.86, 65.00' RT.

FEDERAL CHANNEL LINE AS PROVIDED BY US ARMY CORPS OF ENGINEERS NEW ENGLAND DISTRICT  
SURVEY UNIT IN NAD 1927 COORDINATES, CONVERTED TO NAD 1983 COORDINATES (CORPSCON CONVERSION PROGRAM)  
SEE SHEET 1 OF 3



State of Maine, Cumberland SS.  
Registry of Deeds  
Received SEPT 8, 2004  
at 2:48 m. A M and recorded in  
Plan Book 204 Page 624  
Attest Jane B. O'Brien Register



8-25-04

SEE SHEET 1 OF 3  
FOR NOTES & PLAN REFERENCES

**RECORDING PLAT SHEET 3 OF 3**  
**OCEAN GATEWAY**  
COMMERCIAL STREET & FORE STREET, PORTLAND, MAINE  
MADE FOR  
**CITY OF PORTLAND**  
389 CONGRESS STREET, PORTLAND, MAINE 04101  
**AND STATE OF MAINE**  
16 STATE HOUSE STATION, AUGUSTA, MAINE 04333

**OWEN HASKELL, INC.**  
16 CASCO ST., PORTLAND, ME 04101 (207) 774-0424  
PROFESSIONAL LAND SURVEYORS

Drawn By	WCS	Date	AUGUST 4, 2004	Job No.	2003-165P
Trace By	JLW	Scale	1" = 40'	Drwg. No.	3 OF 3
Check By	WCS				
Book No.	FILE				