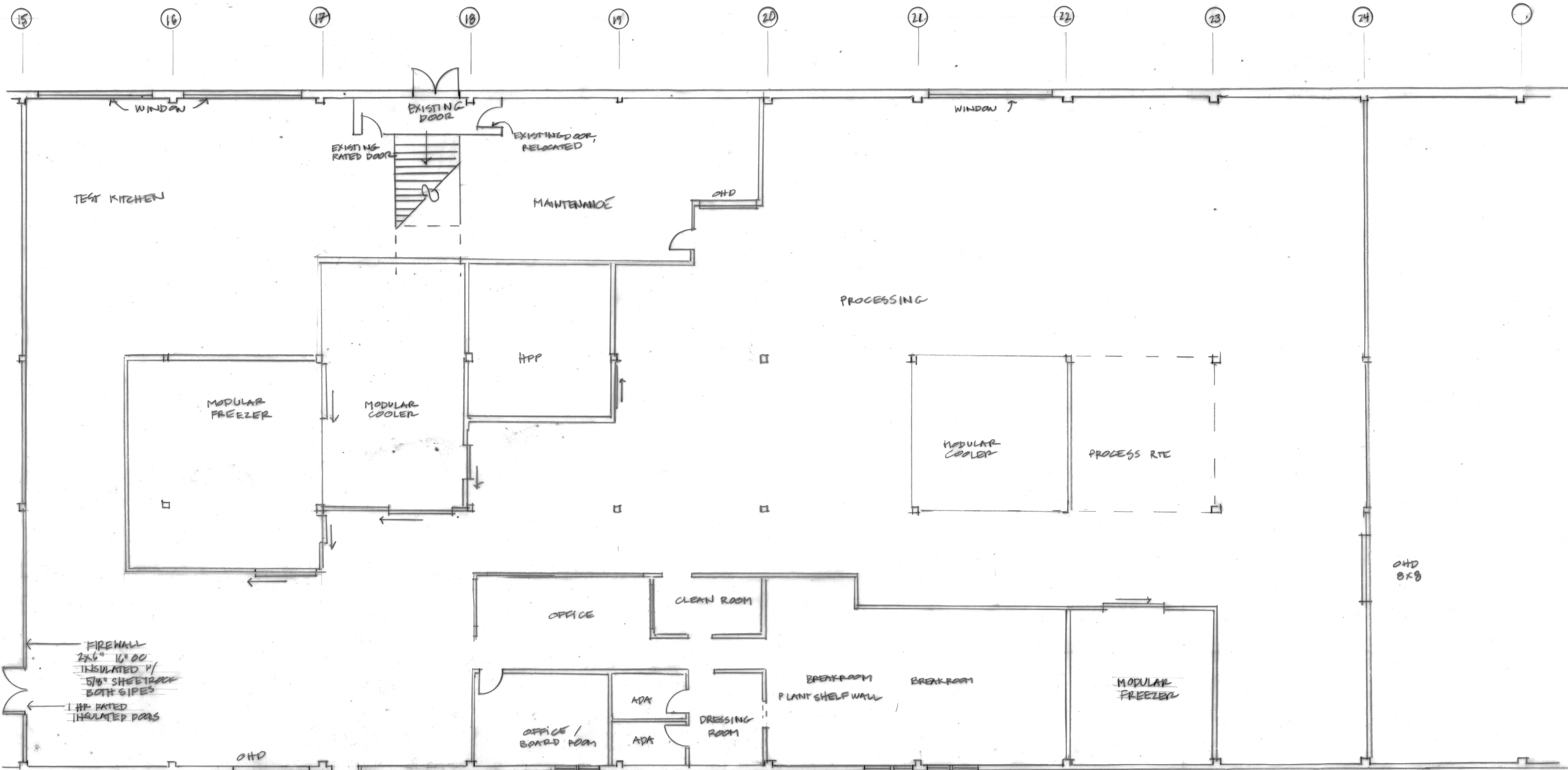
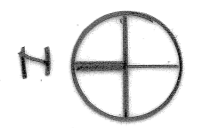


REVISED
JAN 20/15



FIREWALL
2x6" 16' 00"
INSULATED w/
5/8" SHEETROCK
BOTH SIDES
HP RATED
INSULATED DOORS

← 110' DELIVERY ACCESS →

14'-0"

12'-0"

12'-0"

0 5 10
1/8" = 1'-0"
1/4" = 1'-0"

FIRST FLOOR PLAN

JANUARY 29 2015

1/8" = 1'-0"

SHUCKS MAINE LOBSTER
POT PORTLAND, MAINE

PG

1

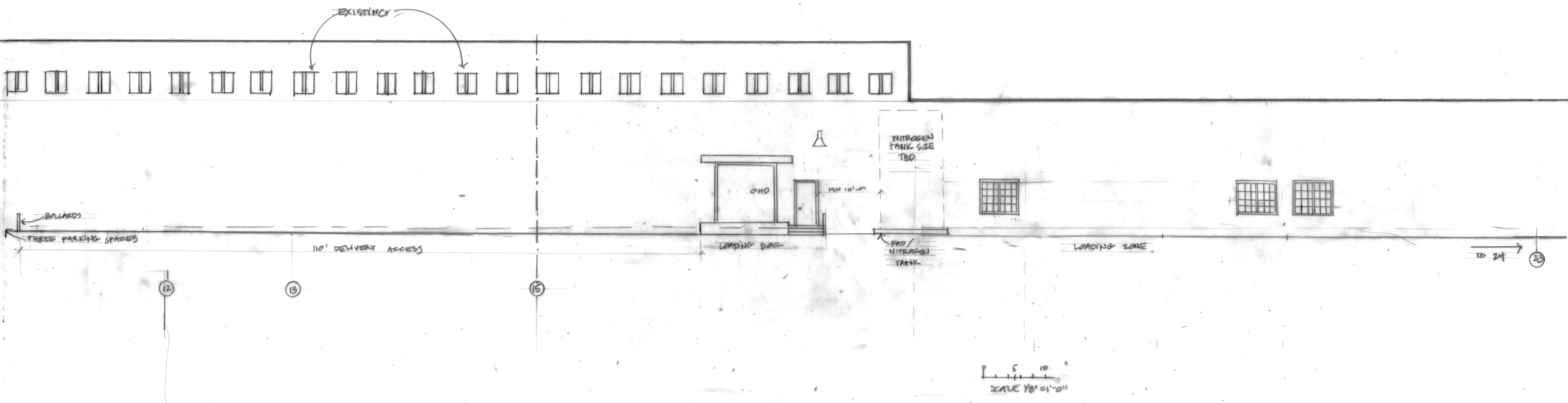
REVISED
JAN 30/15

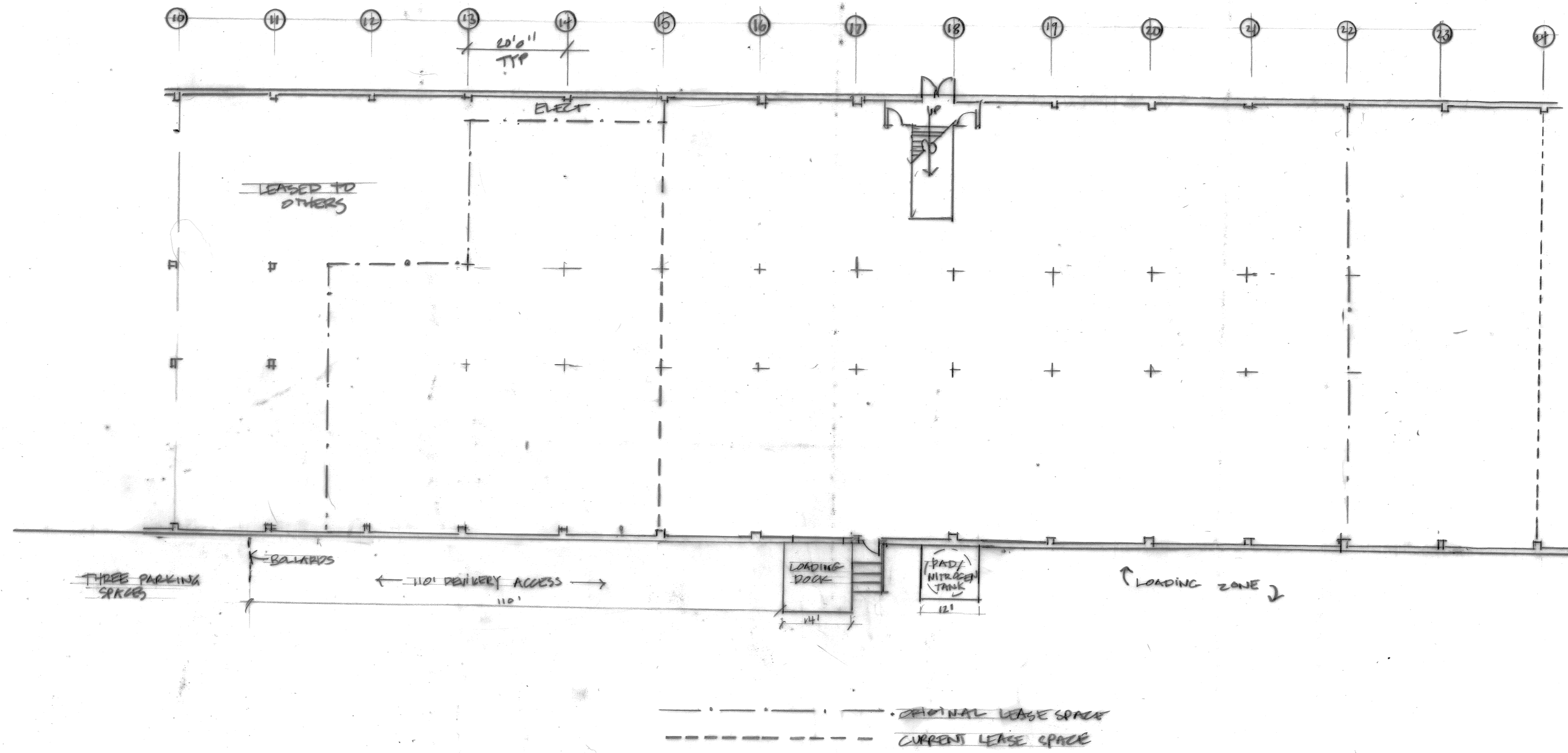
WEST ELEVATION
JANUARY 25, 2015
1/8" = 1'-0"

SHUCKS MAINE LOBSTER
POT PORTLAND, MAINE

26

2





REVISED
JAN 30/15

LEASED SPACE

JANUARY 25, 2015

SHUCKS MAINE LOBSTER
POT PORTLAND, MAINE

19