



700 Marsolais Street
L'Assomption, Quebec
Canada J5W 2G9
Tel: (450) 589-1063
or 1-800-267-8243
Télec. : (450) 589-1711
Fax: (450) 589-1711
info@stageline.com

Stageline SL 260

A thorough understanding of the inter-related loadings shown in this rigging plan is needed in order to safely use this mobile stage roof and to take full advantage of the many rigging opportunities it offers.

This mobile stage roof offers a variety of rigging options with regard to load capacity, placement and type.

There are trusses, rigging pipes, front overhang rigging pipes, side overhang rigging beams, line array rigging beams and roof rigging points.

This rigging plan locates and defines these rigging features, includes load capacity for each and describes maximum combinations of loads amongst features.

Take note of exclusions, maximum sub-totals in a group, load balance requirements, maximum lifting capacity of roof and maximum rigging load on roof.

The maximum load on the roof is less than the sum of the maximum load on each rigging feature.

Rigging Point Maximum Load Capacity		
Point No.	Lb	Kg
P16	2500	1134
P14, P15 & P17	2000	907
P1, P5, P6 & P11	1000	454
P2, P7 & P13	750	340
P3 & P8	600	272
P4, P9 & P10	500	227
P12	350	159

RIGGING RESTRICTIONS

Use both P1s, P2s, P3s, etc. or P10 alone or 30 lb/lin. ft (45 kg/lin. m)

Total load of both P12s and both P13s must not exceed 1500 lb (680 Kg).

Load on each P12 must be uniformly distributed.

Load on each P13 must be uniformly distributed or concentrated to steel hook.

Total load of P14 to P17 at each side must not exceed 2225 lb (1009 Kg) when banner is installed.

Total load of P14 to P17 at each side must not exceed 2500 lb (1134 Kg) when banner support is **NOT** installed.

Never use P17 concurrently with P14 or P15 at a given side.

Never use rigging pipes concurrently with P11s.

Do not load more than 30 lb/lin. ft (45 kg/lin. m) per rigging pipes.

Do not load downstage roof panel with more than 250 lb (113 Kg) when corner post are in a 45 degrees angle

Do not load upstage P12 to P17 whenever upstage windwall overlap rear overhang pipes

LIFTING RESTRICTIONS

Maximum asymmetric load difference between downstage and upstage roof panels must not exceed 2000 lb (907 kg).

Notes:

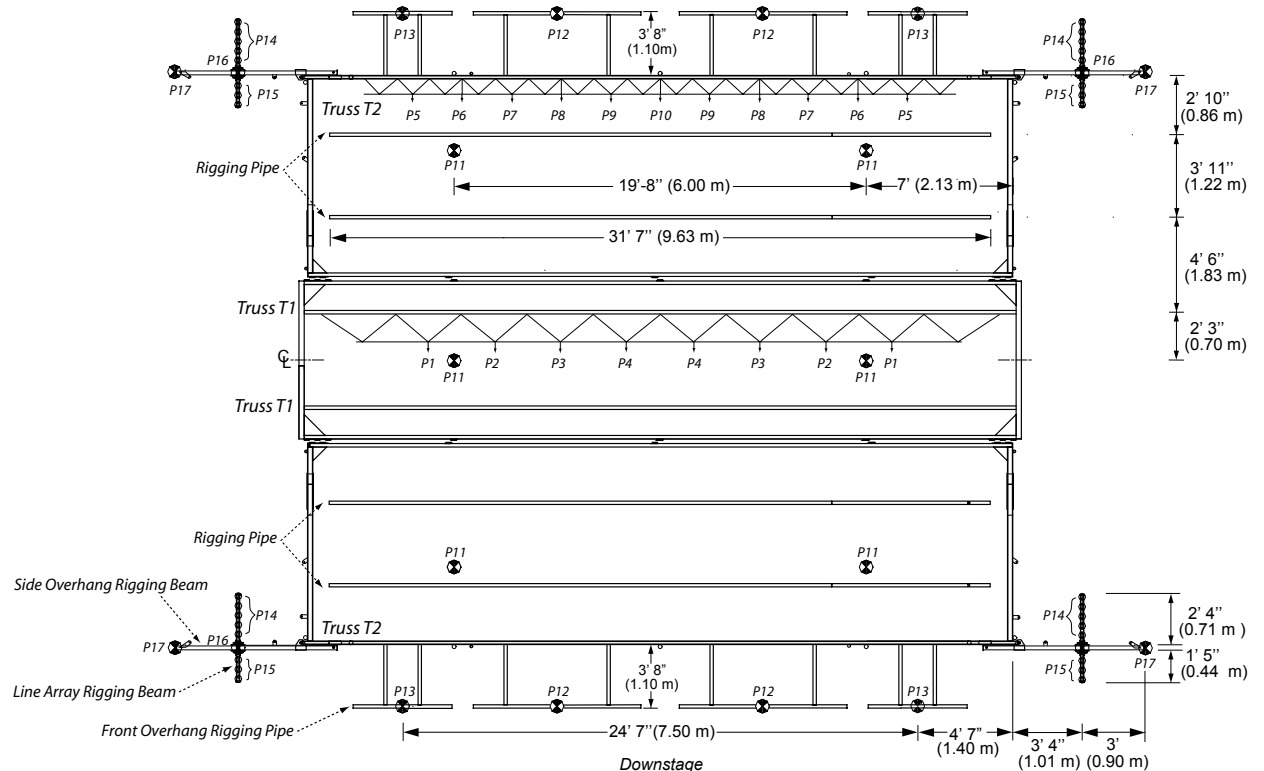
Outside diameter of rigging bars and of lower chord of trusses is 2" (5 cm).

Distance between rigging pipe and roof is 4" (10 cm).

Distance between each lower chord node on T1 is 3' 4" (1.00 m).

Distance between each lower chord node on T2 is 1' 8" (0.50 m).

Line array rigging beams are reversible.



MAXIMUM ROOF LIFTING CAPACITY: 12000 LB (5443 KG)

MAXIMUM LOAD BEARING CAPACITY: 25000 LB (11340 KG) *

*All corner posts must be installed and pinned.

Rigging Plan Reversible - Unit No. 389 and Up