

Job Name:	
System Reference:	Date:



Outdoor Unit: MXZ-3C24NA2

### ACCESSORIES

- 3/8" x 1/2" Port Adapter (MAC-A454JP-E)
- 1/2" x 3/8" Port Adapter (MAC-A455JP-E)
- 1/2" x 5/8" Port Adapter (MAC-A456JP-E)
- M-NET Adapter (PAC-IF01MNT-E)
- Base Heater (PAC-645BH-E)

(For data on specific indoor units, see the MXZ-C Technical and Service Manual.)

Specifications			Model Name
Unit Type			MXZ-3C24NA2
Cooling* (Non-ducted / Ducted)	Rated Capacity	Btu/h	22,000 / 23,600
	Capacity Range	Btu/h	12,600-22,000 / 12,600-25,500
	Rated Total Input	W	1,620 / 2,100
Heating at 47°F* (Non-ducted / Ducted)	Rated Capacity	Btu/h	25,000 / 24,600
	Capacity Range	Btu/h	11,400-30,600 / 11,400-29,400
	Rated Total Input	W	1,750 / 1,900
Heating at 17°F* (Non-ducted/Ducted)	Rated Capacity	Btu/h	14,000 / 14,000
	Rated Total Input	W	2,120 / 2,230
Energy Star® (ENERGY STAR products are third-party certified by an EPA-recognized Certification Body.)			Yes
Electrical Requirements	Power Supply	Voltage, Phase, Hertz	208 / 230V, 1-Phase, 60 Hz
	Recommended Fuse/Breaker Size	A	25
	MCA	A	22.1
Voltage	Indoor - Outdoor S1-S2	V	AC 208 / 230
	Indoor - Outdoor S2-S3	V	DC ±24
Compressor			INVERTER-driven Scroll Hermetic
Fan Motor (ECM)		F.L.A.	2.43
Sound Pressure Level (Non-ducted/Ducted)	Cooling		51
	Heating		55
External Dimensions (H x W x D)		In (mm)	31-11/32 x 37-13/32 x 13 (796 x 950 x 330)
Net Weight		Lbs (kg)	137 (62)
External Finish			Munsell 3.0Y 7.8/1.1
Refrigerant Pipe Size O.D.	Liquid (High Pressure)	In (mm)	1/4 (6.35)
	Gas (Low Pressure)		A Port: 1/2 (12.7) ; Other: 3/8 (9.52)
Max. Refrigerant Line Length		Ft (m)	230 (70)
Max. Piping Length for Each Indoor Unit		Ft (m)	82 (25)
Max. Refrigerant Pipe Height Difference	If IDU is Above ODU	Ft (m)	49 (15)
	If IDU is Below ODU		49 (15)
Connection Method			Flared/Flared
Refrigerant			R410A

\* Rating Conditions per AHRI Standard:

Cooling | Indoor: 80° F (27° C) DB / 67° F (19° C) WB  
Cooling | Outdoor: 95° F (35° C) DB / 23.9° C (75° F) WB

Heating at 47°F | Indoor: 70° F (21° C) DB / 60° F (16° C) WB  
Heating at 47°F | Outdoor: 47° F (8° C) DB / 43° F (6° C) WB

Heating at 17° F | Indoor: 70° F (21° C) DB  
Heating at 17° F | Outdoor: 17° F (-8° C) DB / 15° F (-9° C) WB

# SPECIFICATIONS: MXZ-3C24NA2

**OPERATING RANGE:**

	Outdoor
Cooling	14 to 115° F (-10 to 46° C) DB
Heating	5 to 65° F (-15 to 18° C) WB

**ENERGY EFFICIENCIES:**

Indoor Unit Type	SEER	EER	HSPF	COP @ 47°F	COP @ 17°F
<b>Non-ducted (06 + 06 + 09)</b>	20.0	13.6	9.8	4.2	2.97
<b>Ducted and Non-ducted</b>	18.0	12.4	9.5	4.0	2.79
<b>Ducted (09 + 09 + 09)</b>	16.0	11.2	9.2	3.8	2.61

**NOTES:**

- Minimum of two Indoor Units must be connected to the MXZ-3C24NA2.
- Minimum installed capacity cannot be less than 12,000 Btu/h.
- Total connected capacity must not exceed 130% of outdoor unit capacity.
- System can operate with only one Indoor Unit turned on.
- Information provided at 208/230V.
- For Reference:
  - MXZ-C Technical & Service Manual for detailed specifications and additional information per Indoor Unit Combination.
  - MXZ Series Multi-Zone Indoor/Outdoor Combination Table for allowed unit combinations.

**MVZ CONNECTION RULES:**

- Only 1 MVZ may be used on any system.
- When an MVZ is connected, total connected capacity must be 100% or less.
- When an MVZ is connected, no P-Series indoor units can be used (PCA, PLA, or PEAD).

Notes:

# MXZ-3C24NA2 OPERATIONAL PERFORMANCE

**NON-DUCTED:**

# of indoor unit	Total Nominal Capacity (x1000 Btu/h)	Total Indoor Unit Capacity (Btu/h)	Operational Performance for Indoor Unit Combinations (Unit A + Unit B + Unit C)	Cooling Capacity Range (Btu/h)		
				Heating Capacity Range (Btu/h)		
				Unit A	Unit B	Unit C
1	6	6,000	6	6,000	-	-
		7,400		7,400	-	-
1	9	9,000	9	9,000	-	-
		11,000		11,000	-	-
1	12	12,000	12	12,000	-	-
		14,400		14,400	-	-
1	15	14,000	15	14,000	-	-
		18,000		18,000	-	-
1	18	17,200	18	17,200	-	-
		21,600		21,600	-	-
2	12	12,000	6 + 6	6,000	6,000	-
		14,800		7,400	7,400	-
2	15	14,000	6 + 9	5,600	8,400	-
		18,400		7,400	11,000	-
2	18	18,000	6 + 12	6,000	12,000	-
		22,000		7,500	14,500	-
2	18	18,000	9 + 9	9,000	9,000	-
		22,000		11,000	11,000	-
2	21	20,000	6 + 15	6,000	14,000	-
		22,000		6,400	15,600	-
2	21	20,000	9 + 12	8,600	11,400	-
		22,000		9,500	12,500	-
2	24	21,800	6 + 18	5,600	16,200	-
		24,000		6,100	17,900	-
2	24	21,800	12 + 12	10,900	10,900	-
		24,000		12,000	12,000	-
2	24	21,800	9 + 15	8,500	13,300	-
		24,000		9,100	14,900	-
2	27	21,800	9 + 18	7,500	14,300	-
		24,000		8,100	15,900	-
2	27	21,800	12 + 15	10,100	11,700	-
		24,000		10,700	13,300	-
3	18	18,000	6 + 6 + 6	6,000	6,000	6,000
		22,000		7,300	7,300	7,300
3	21	21,000	6 + 6 + 9	6,000	6,000	9,000
		24,800		7,100	7,100	10,600
3	24	22,000	6 + 6 + 12	5,500	5,500	11,000
		25,000		6,300	6,300	12,300
3	24	22,000	6 + 9 + 9	5,500	8,300	8,300
		25,000		6,300	9,400	9,400
3	27	24,000	6 + 6 + 15	5,500	5,500	12,900
		25,000		5,600	5,600	13,700
3	27	24,000	6 + 9 + 12	5,300	8,000	10,700
		25,000		5,600	8,400	11,000
3	27	24,000	9 + 9 + 9	8,000	8,000	8,000
		25,000		8,300	8,300	8,300

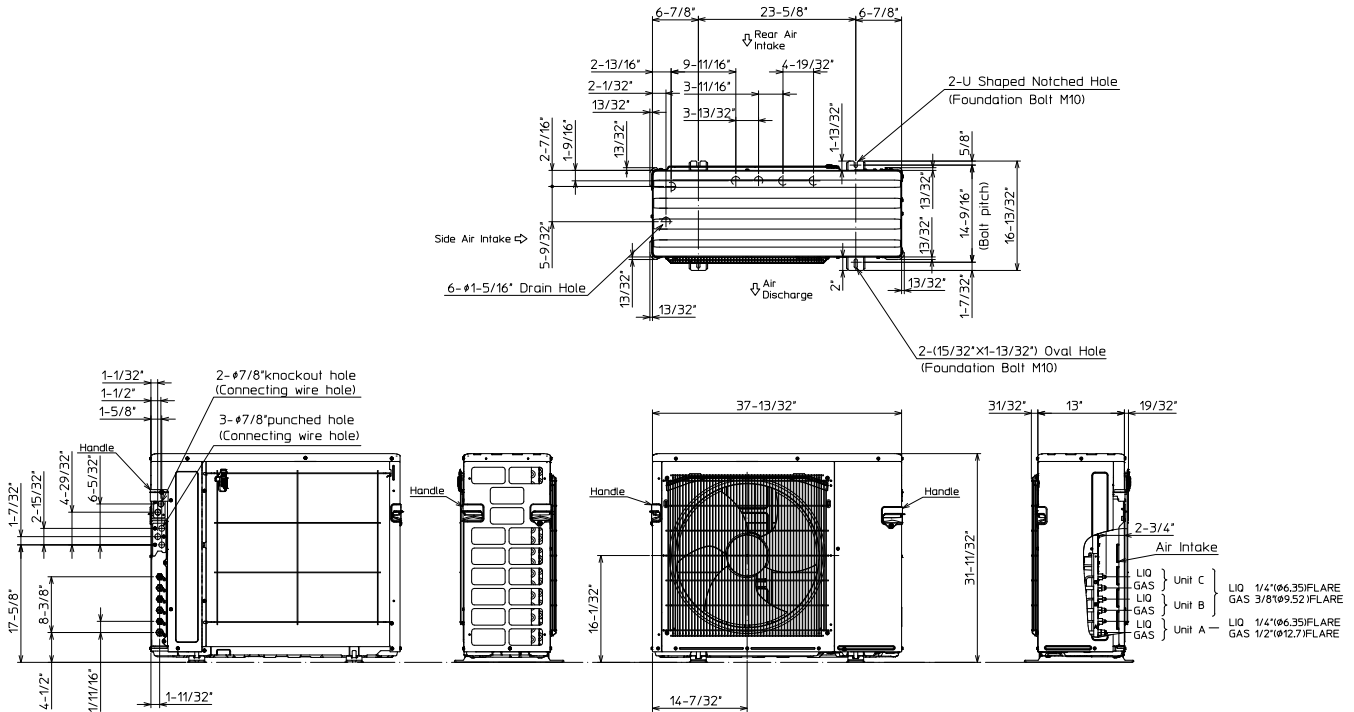
# MXZ-3C24NA2 OPERATIONAL PERFORMANCE, contd.

**DUCTED:**

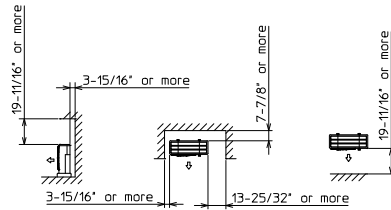
# of indoor unit	Total Nominal Capacity (x1000 Btu/h)	Total Indoor Unit Capacity (Btu/h)	Operational Performance for Indoor Unit Combinations (Unit A + Unit B + Unit C)	Cooling Capacity Range (Btu/h)		
				Heating Capacity Range (Btu/h)		
				Unit A	Unit B	Unit C
1	9	9,000	9	9,000	-	-
		10,900		10,900	-	-
1	12	12,000	12	12,000	-	-
		13,600		13,600	-	-
1	15	15,000	15	15,000	-	-
		18,000		18,000	-	-
1	18	17,200	18	17,200	-	-
		21,600		21,600	-	-
2	18	18,000	9 + 9	9,000	9,000	-
		21,800		10,900	10,900	-
2	21	21,000	9 + 12	9,000	12,000	-
		22,000		9,800	12,200	-
2	24	21,800	12 + 12	10,900	10,900	-
		24,000		12,000	12,000	-
2	24	21,800	9 + 15	8,200	13,600	-
		24,000		9,100	14,900	-
2	27	21,800	9 + 18	7,500	14,300	-
		24,000		8,000	16,000	-
2	27	21,800	12 + 15	9,700	12,100	-
		24,000		10,300	13,700	-
3	27	21,800	9 + 9 + 9	7,300	7,300	7,300
		24,600		8,200	8,200	8,200

# DIMENSIONS: MXZ-3C24NA2

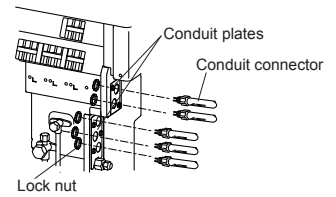
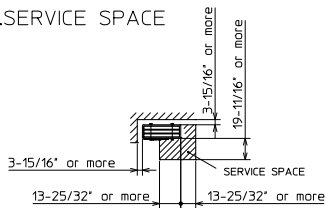
Unit: inch (mm)



## 1.FREE SPACE



## 2.SERVICE SPACE



COOLING & HEATING

1340 Satellite Boulevard, Suwanee, GA 30024  
Toll Free: 800-433-4822 www.mehvac.com

