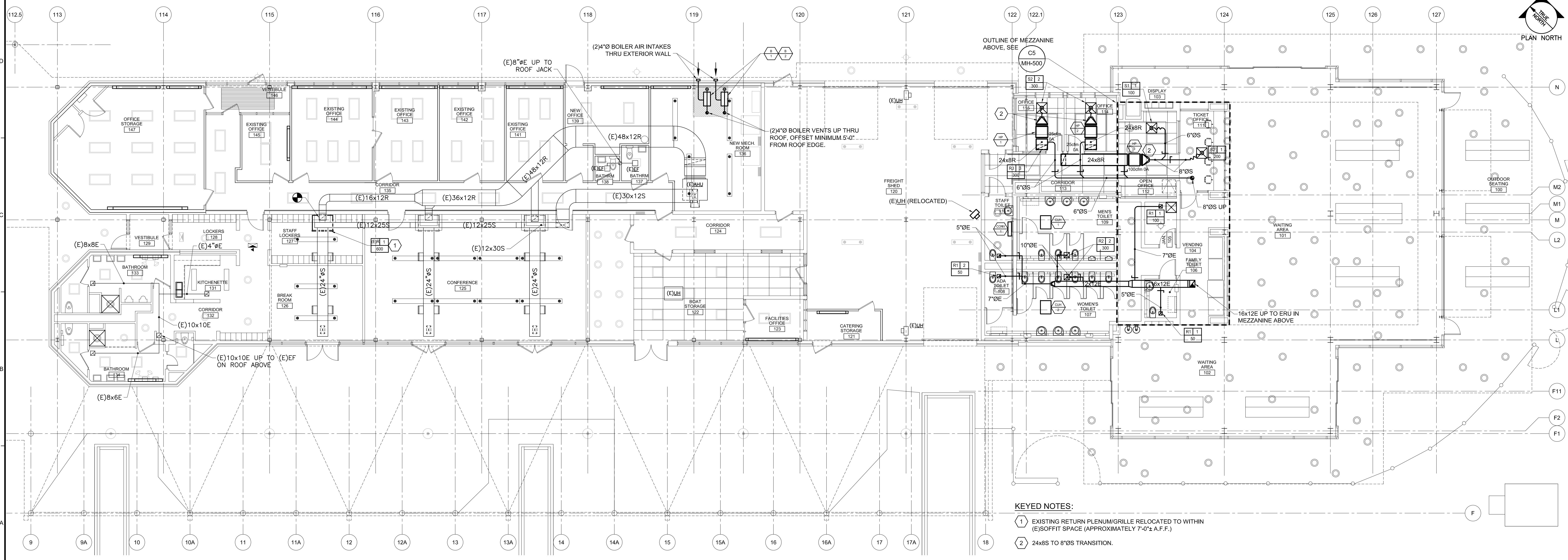


- DEMOLITION KEYED NOTES:**
- 1 REMOVE EXISTING RETURN PLENUM/GRILLE (FOR RE-USE), REMOVE (E)RETURN DUCTWORK UP TO APPROXIMATELY 7'-0" A.F.F.
 - 2 REMOVE (E)HIGH/LOW COMBUSTION AIR LOUVERS.
 - 3 REMOVE (E)CEILING EXHAUST FAN AND DUCTWORK, TO INCLUDE ROOF JACK.

E1 MECHANICAL DEMOLITION PLAN
1/8" = 1'-0"



- KEYED NOTES:**
- 1 EXISTING RETURN PLENUM/GRILLE RELOCATED TO WITHIN (E)SOFFIT SPACE (APPROXIMATELY 7'-0"± A.F.F.)
 - 2 24x8 TO 8'0" TRANSITION.

A1 MECHANICAL PLAN
1/8" = 1'-0"

Allied Engineering
Structural Mechanical Electrical Commissioning

**160 Veranda Street
Portland, Maine 04103**
T: 207.221.2260
F: 207.221.2266
Web: www.allied-eng.com

Allied Project No: 12008
Cad File: 12008M.dwg
Checked By: IAM

SSA

Scott Simons Architects
75 York Street, Portland, Maine 04101
www.simonsarchitects.com
207.772.4656

PROJECT NAME:
CASCO BAY FERRY TERMINAL
RENOVATIONS & ADDITIONS
56 COMMERCIAL STREET
PORTLAND, MAINE 04101

SEAL:

IAN A. MACDONALD
No. 6990
LICENSED PROFESSIONAL ENGINEER
MECHANICAL ENGINEERING

REVISION:

NO.	DATE	DESCRIPTION
1	DATE	
2	DATE	
3	DATE	
4	DATE	
5	DATE	
6	DATE	

DATE OF ISSUE: MAY 14, 2013
PROJECT NUMBER: 2011-0270
STATUS: ISSUED FOR BIDDING

MECHANICAL PLANS

MH-100
2008 © Scott Simons Architects LLC

N:\Projects\2012\12008 - Casco Bay Ferry Terminal\01 Drawing Files\12008M.dwg May 13, 2013 - 8:19am