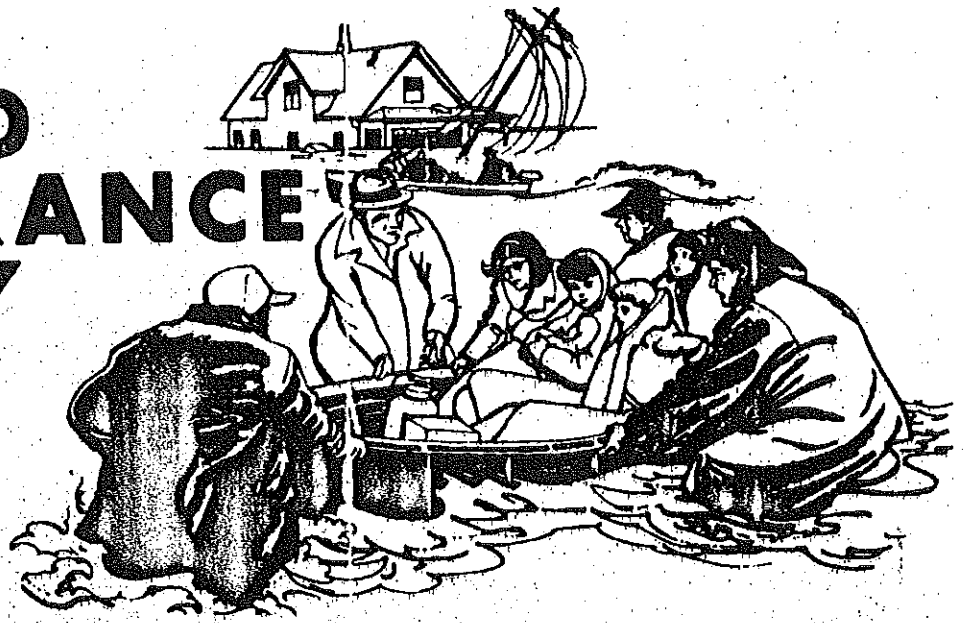
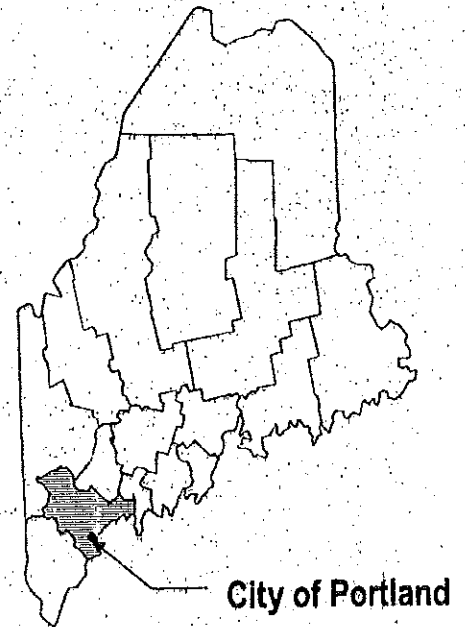


FLOOD INSURANCE STUDY



**CITY OF
PORTLAND
AND TOWN OF
LONG ISLAND,
MAINE
CUMBERLAND COUNTY**



REVISED:
DECEMBER 8, 1998



Federal Emergency Management Agency

COMMUNITY NUMBERS
230051-City of Portland
231035-Town of Long Island

Congress Street Bridge. The 100-year flood elevations for Back Cove range from 9.4 feet at the mouth to 9.8 feet in both the northwest and southwest quadrants.

The stillwater elevations for the 10-, 50-, 100-, and 500-year floods have been determined for Casco Bay, the Fore River, and Back Cove and are shown in Table 3, "Summary of Stillwater Elevations."

TABLE 3 - SUMMARY OF STILLWATER ELEVATIONS

FLOODING SOURCE AND LOCATION	ELEVATION (feet NGVD)			
	10-YEAR	50-YEAR	100-YEAR	500-YEAR
CASCO BAY				
Martin Point	8.6	9.2	9.5	10.0
Fish Point	8.7	9.3	9.5	10.1
At Pumpkin Nob on Peaks Island	8.6	9.2	9.4	10.0
At City Point on Peaks Island	8.6	9.1	9.4	9.9
Eastern side of Peaks Island	8.6	9.1	9.4	9.9
Western side of Cushings Island	8.5	9.1	9.3	9.9
Eastern side of Cushings Island	8.6	9.1	9.4	9.9
Eastern side of House Island	8.5	9.1	9.3	9.8
Western side of House Island	8.6	9.2	9.4	10.0
Great Diamond Island	8.6	9.2	9.4	10.0
Western side of Little Diamond Island	8.6	9.2	9.4	9.9
Eastern side of Little Diamond Island	8.6	9.2	9.4	10.0
Northern side of Long Island	8.5	9.1	9.3	9.9
Southern side of Long Island	8.4	9.0	9.2	9.7
Western side of Long Island	8.5	9.1	9.4	9.9
Northeastern side of Cliff Island	8.5	9.1	9.3	9.9
Southeastern side of Cliff Island	8.5	9.0	9.3	9.8
Western side of Cliff Island	8.5	9.1	9.4	9.9
Jewell Island	8.5	9.0	9.3	9.8
FORE RIVER				
At its mouth	8.7	9.3	9.5	10.1
State Pier	8.7	9.4	9.6	10.1
Coast Guard Base (South Portland)	8.8	9.5	9.7	10.3
Portland Bridge	8.9	9.6	9.8	10.4
Veterans Memorial Bridge	8.9	9.6	9.8	10.4
Thompson Point	9.1	9.9	10.2	10.9
Congress Street Bridge	9.1	9.8	10.1	10.8
BACK COVE				
Casco Bay outlet and north shore	8.6	9.2	9.4	10.0
West, south, and east shores	8.9	9.5	9.8	10.4