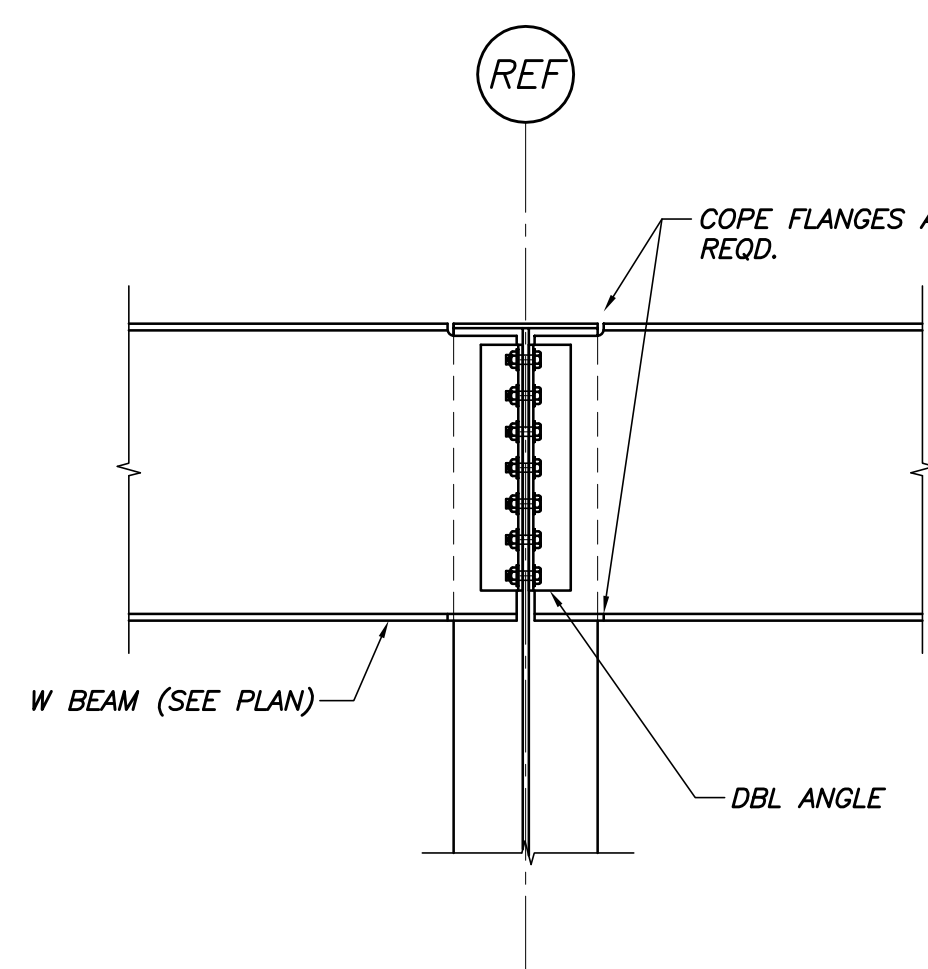
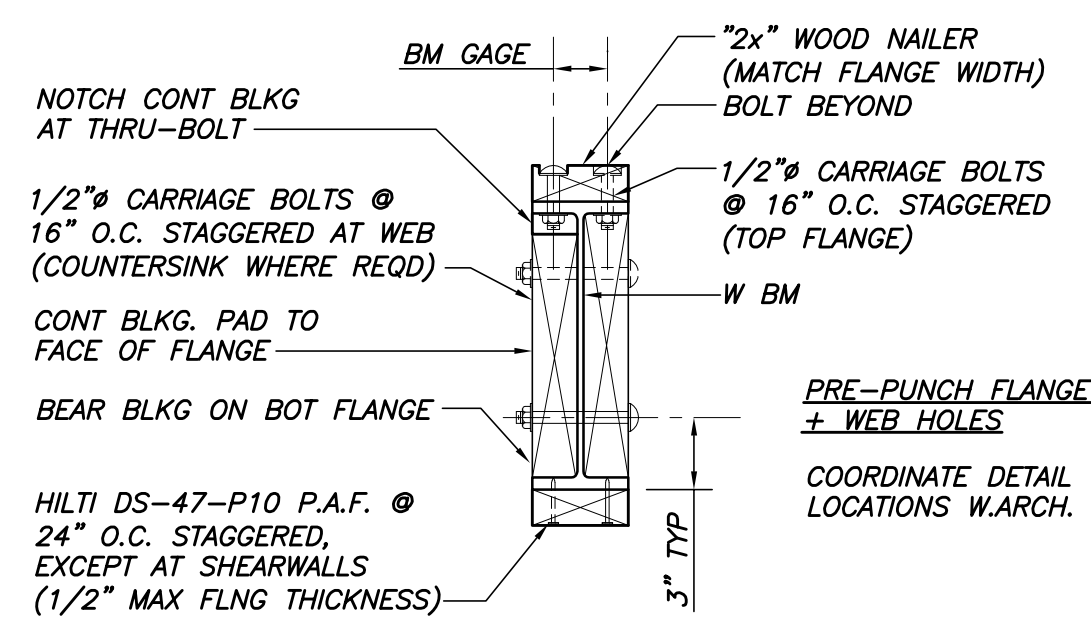
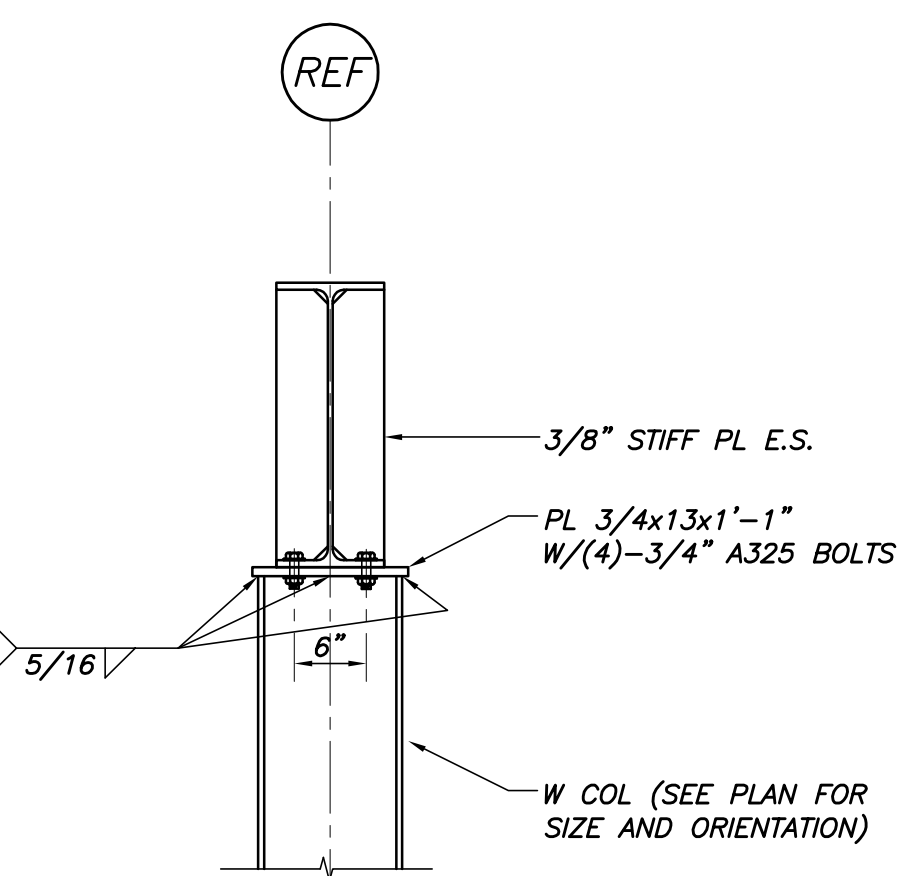
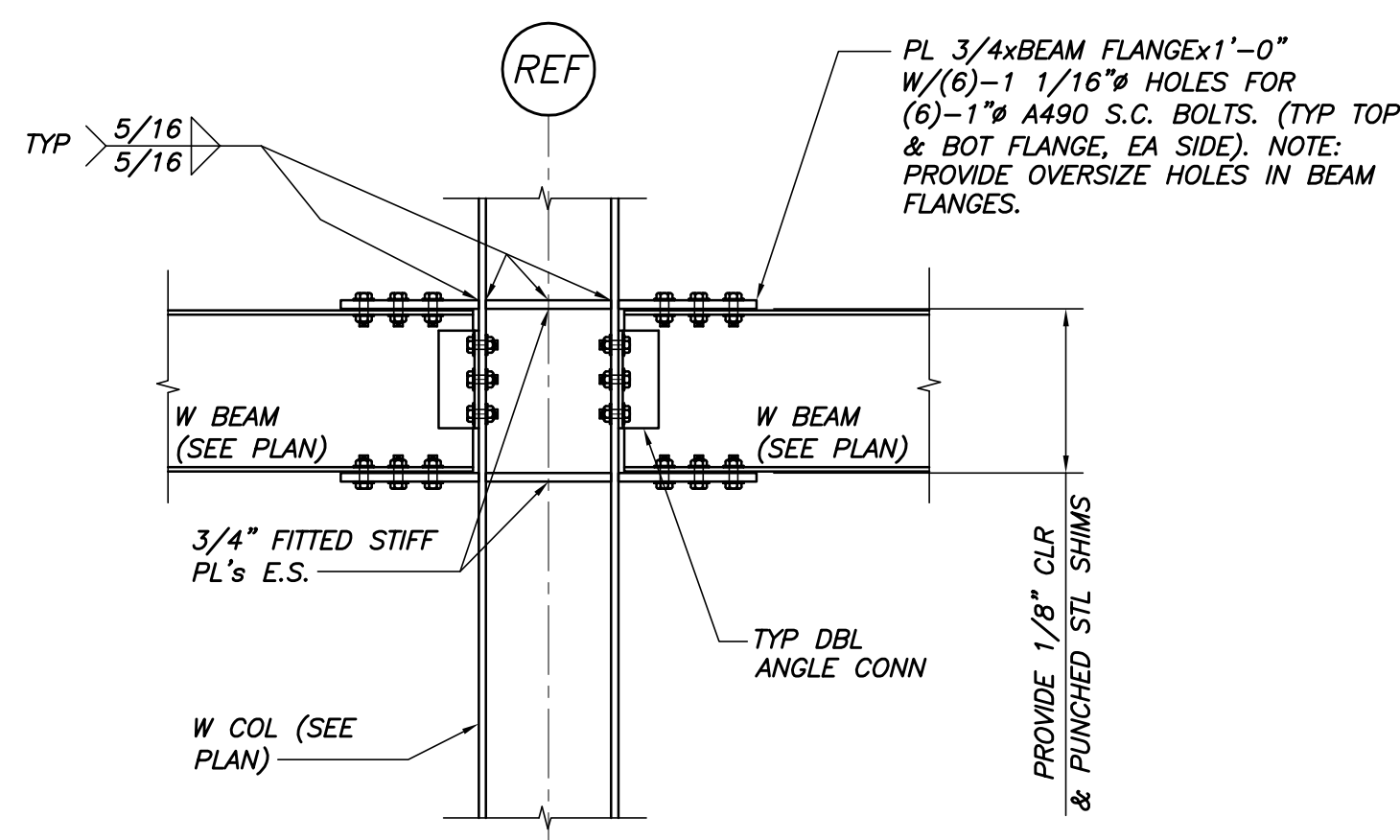


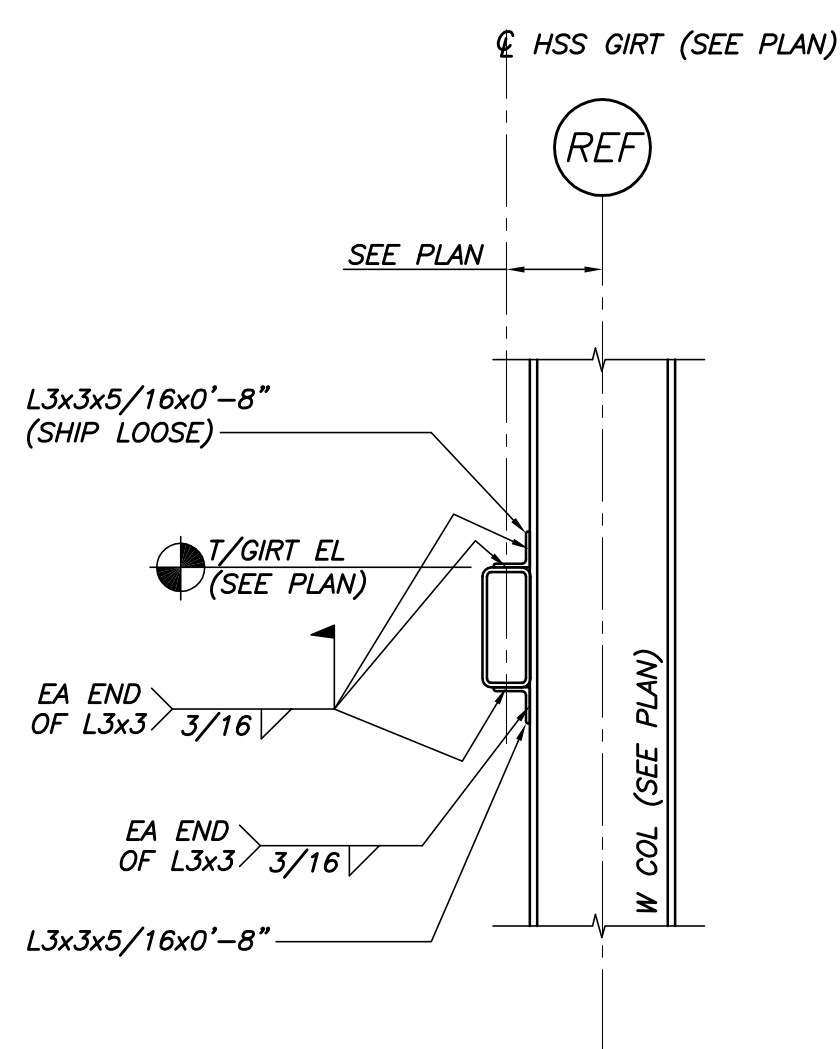
TYP W BEAM TO W COL CONN DETAIL
N.T.S.



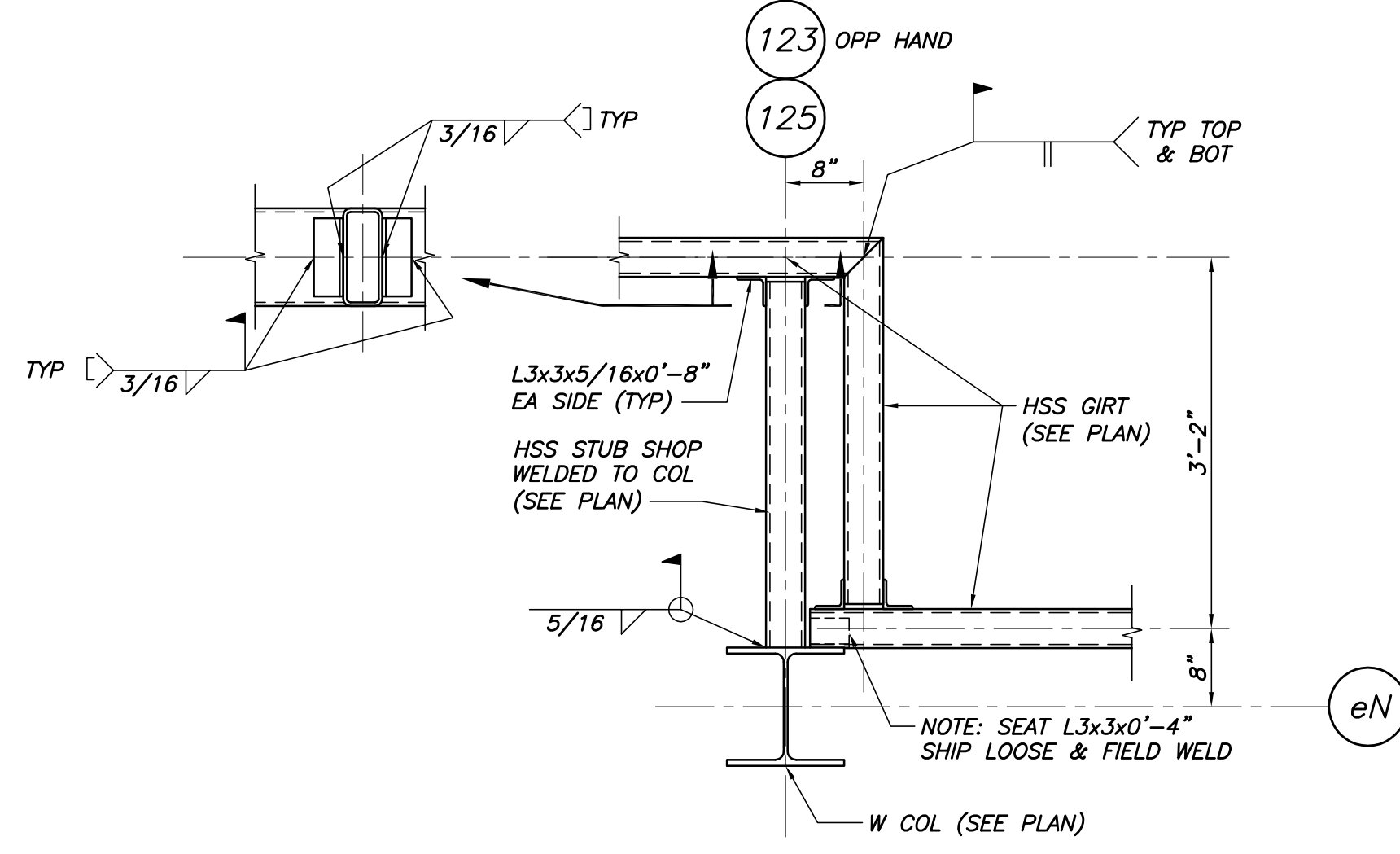
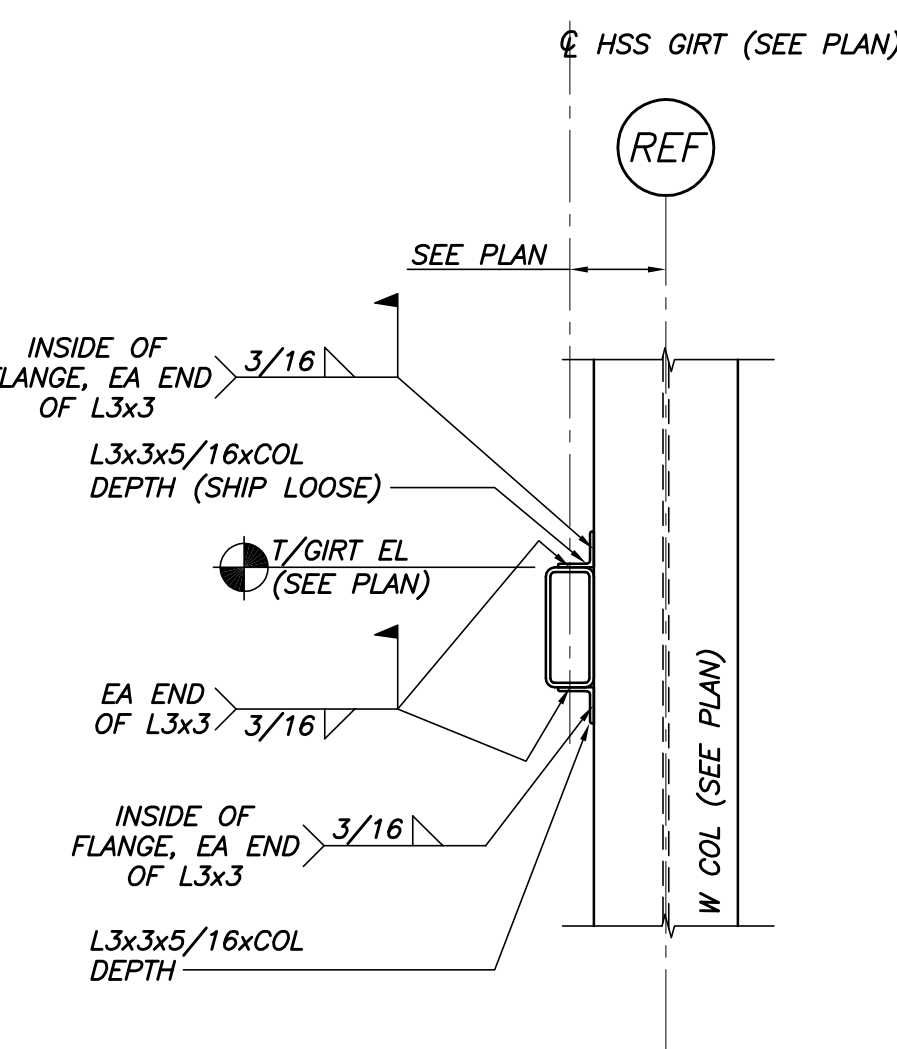
TYP MOMENT CONN DETAIL U.N.O.
N.T.S.



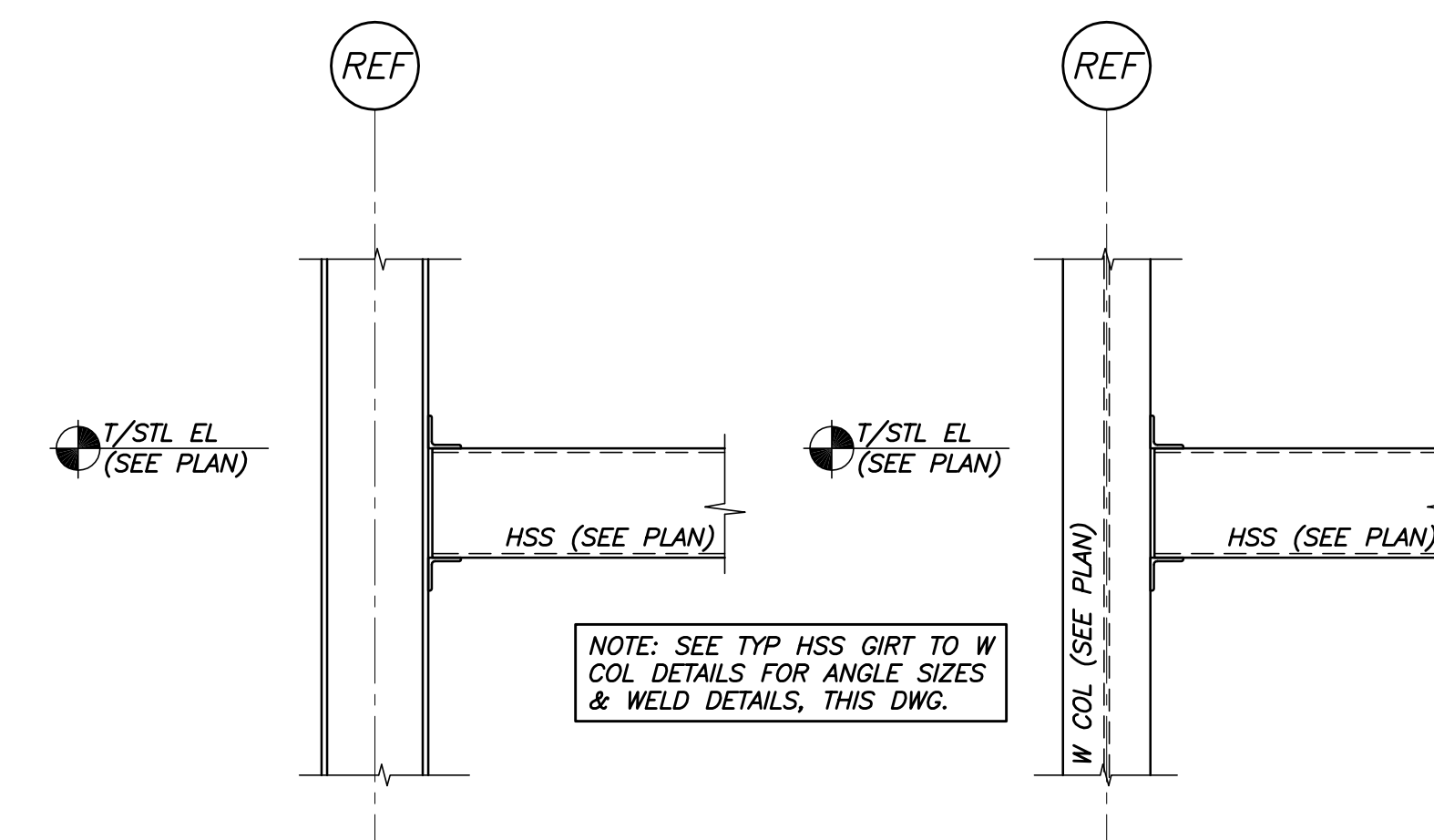
TYP WOOD NAILER/WEB BLKG TO
W-BM DETAIL
N.T.S.



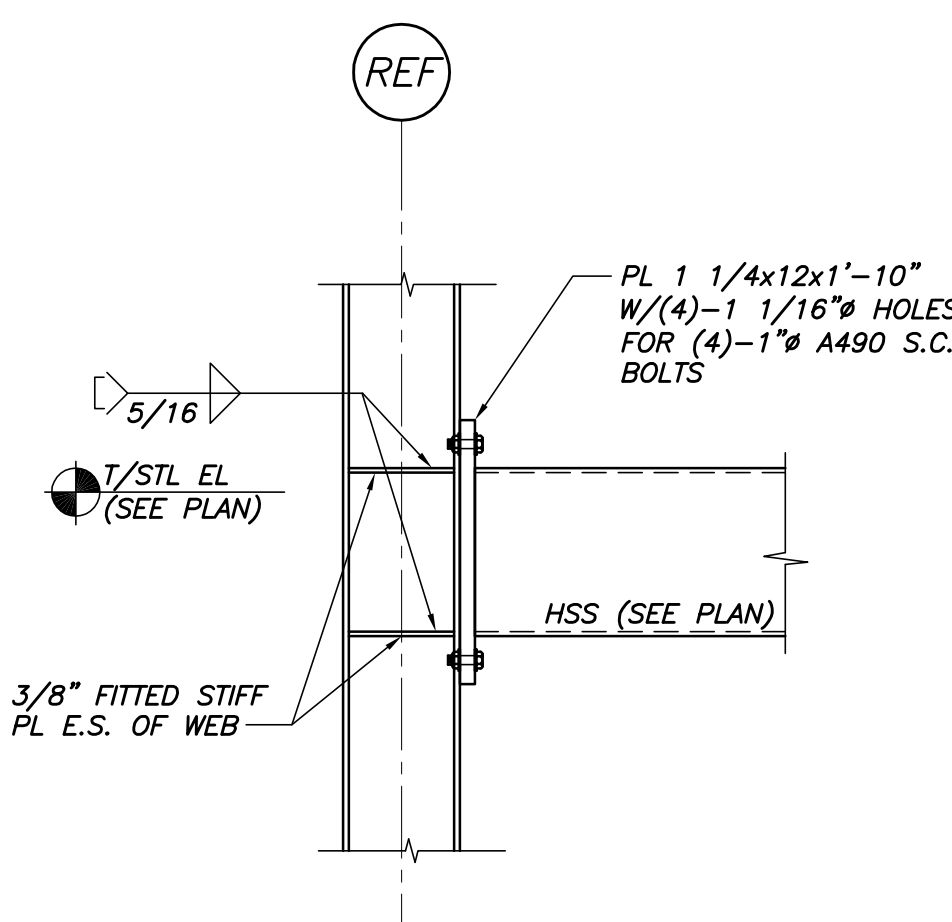
TYP HSS GIRTS TO W COL DETAILS
N.T.S.



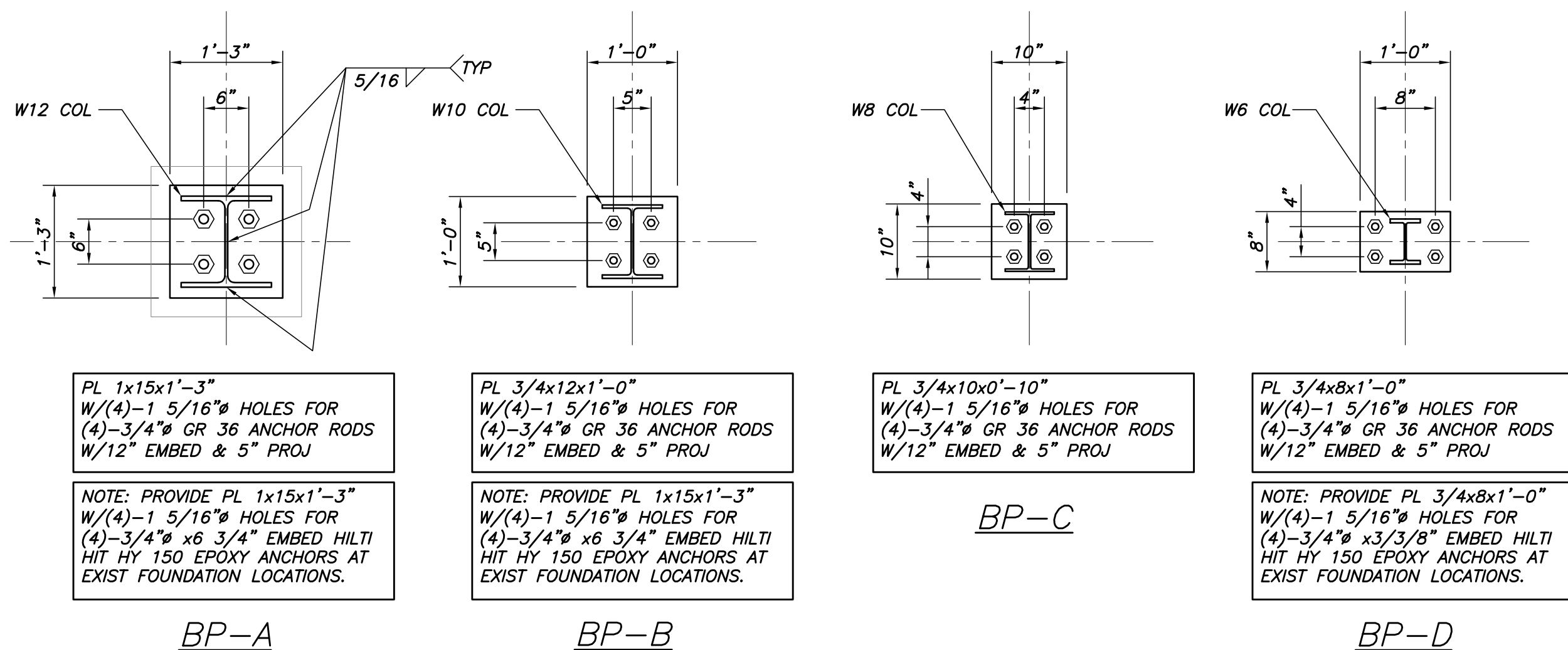
TYP HSS GIRTS TO W COL DETAILS
N.T.S.



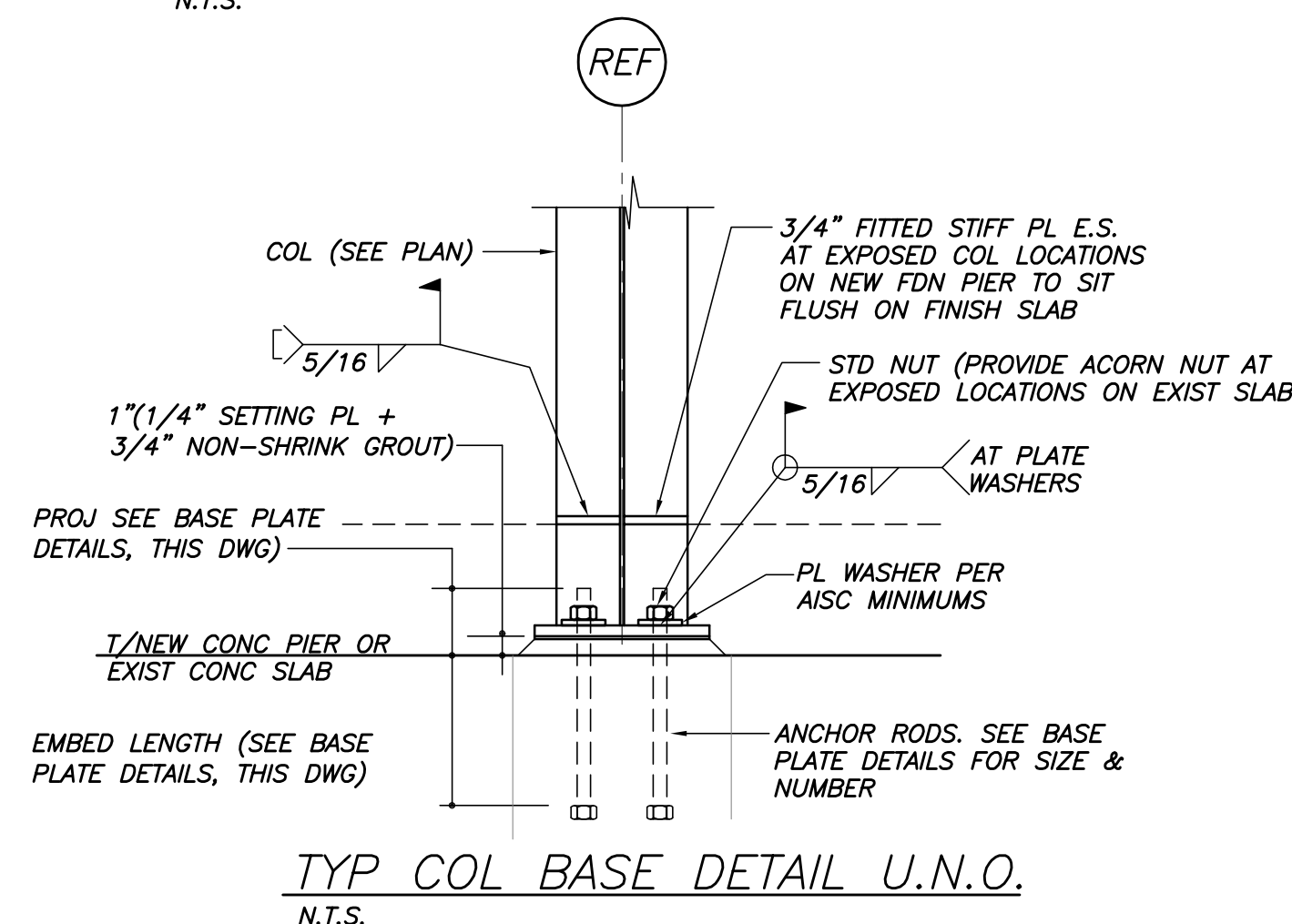
TYP HSS BEAM TO W COL DETAILS
N.T.S.



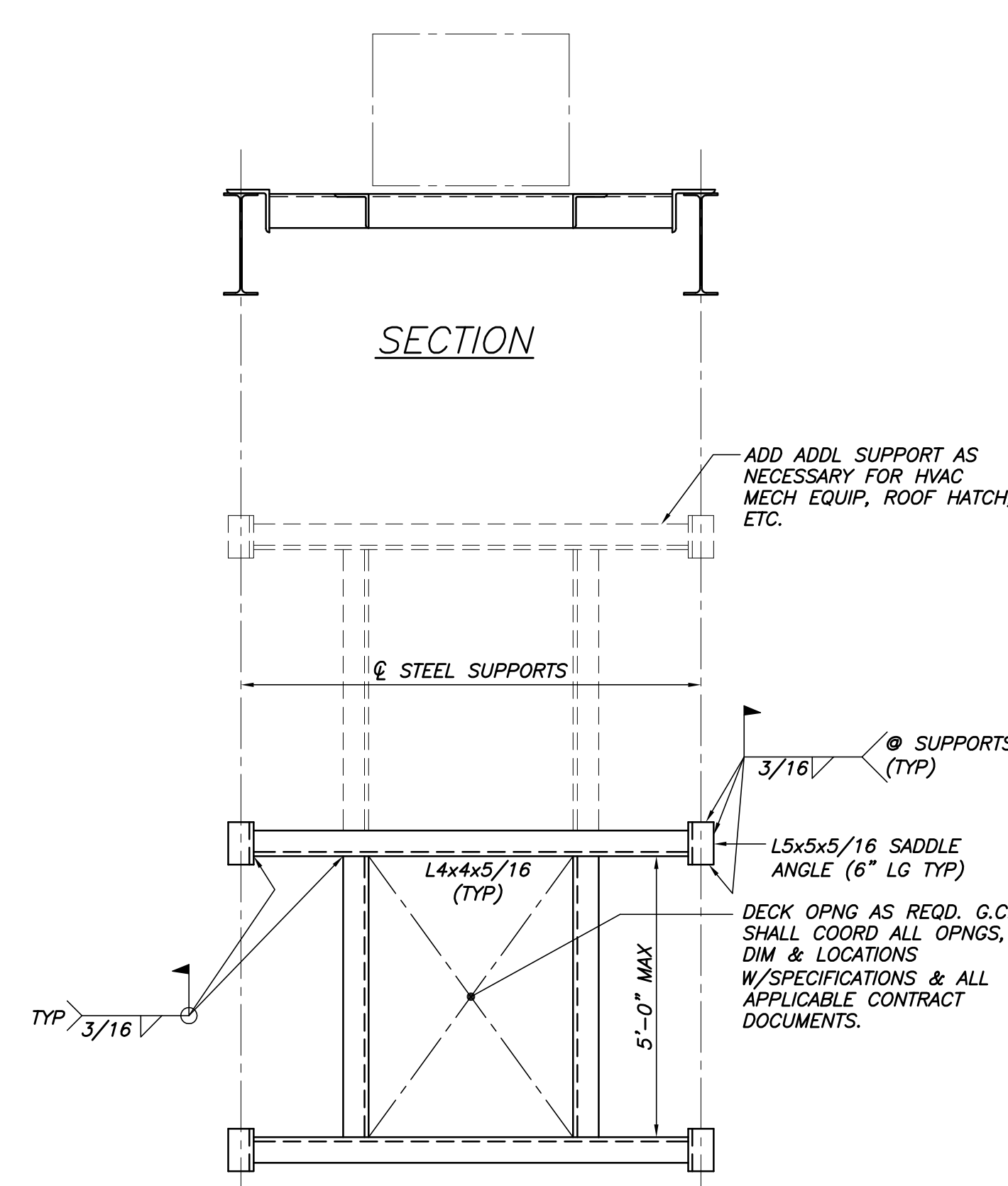
TYP HSS BEAM TO W COL MOMENT
CONNECTION DETAIL
N.T.S.



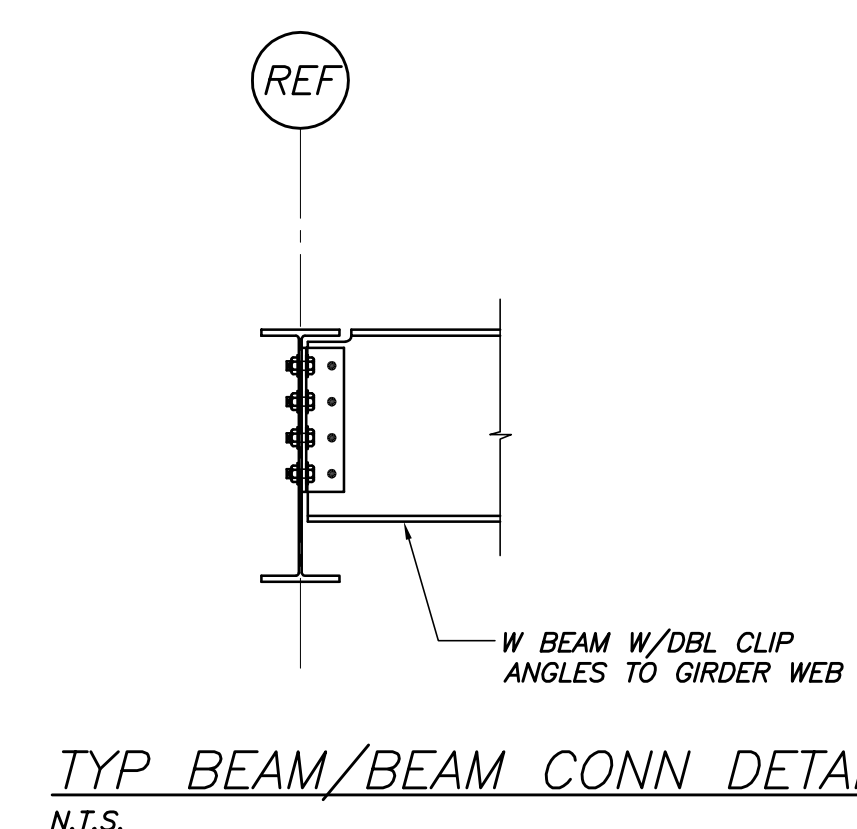
BASE PLATE DETAILS
N.T.S.



TYP COL BASE DETAIL U.N.O.
N.T.S.



PLAN OF TYP OPENING IN ROOF DECK
N.T.S.



TYP BEAM/BEAM CONN DETAIL
N.T.S.

SIMPLE SHEAR BEAM CONN. SCHEDULE

BEAM SIZE	DESIGN REACTION	MINIMUM NO BOLTS 1 SIDED CONNECTION	MINIMUM NO BOLTS 2 SIDED CONNECTION
W8	15k	2	2
W10	15k	2	2
W12	15k	3	2
W14	20k	3	2
W16	25k	4	3
W24	30k	6	4

SIMPLE SHEAR CONNECTIONS NOTES:

1. SIMPLE SHEAR CONNECTIONS SHALL BE SELECTED FROM THE AISC "MANUAL OF STEEL CONSTRUCTION, THIRTEENTH EDITION" USING THE ABOVE REFERENCED REACTIONS AND CRITERIA. REACTIONS INDICATED ARE UNFACTORED (SERVICE LEVEL LOADS). MORE BOLTS THAN REFERENCED IN THE "MINIMUM" SECTIONS ABOVE MAY BE REQUIRED FOR LOAD REQUIREMENTS.
2. CONNECTIONS ARE SUBJECT TO REVIEW ON THE STEEL SHOP DRAWINGS.
3. ALL BOLTS SHALL BE A325 OR A490 FOR SIMPLE SHEAR CONNECTIONS. MIN 3/4\"/>