

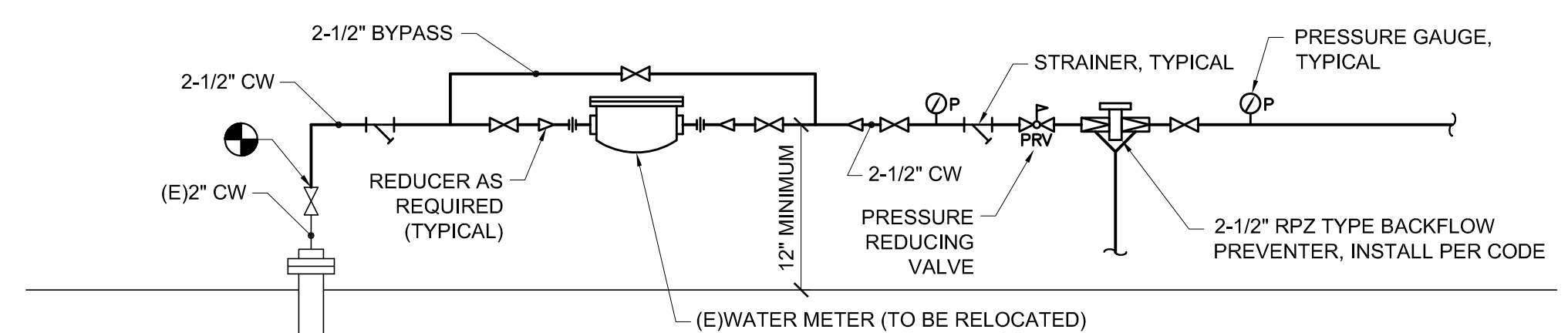
AIR CONTROL SCHEDULE	
BOILER B-1 & B-2 HEATING LOOP	
PIPE MAIN SIZE	3"
AIR SEPARATOR	AS-1
MFR-MODEL	Sprovent VDT 300
INLET/OUTLET	3"
STRAINER	YES
BLADDER-TYPE EXPANSION TANK	ET-1
MFR-MODEL	John Wood Model JAER-23-109
TANK PRE-CHARGE PRESSURE	15.0
TANK DIAMETER	24
TANK HEIGHT	68
ACCEPTANCE VOLUME	120
WEIGHT (LBS.)	285
ASME PRESSURE RATING	150

BOILER SCHEDULE		
TAG	B-1	B-2
TYPE	CONDENSING	CONDENSING
MANUFACTURER	LOGIN/VAR	LOGIN/VAR
BOILER MODEL	KBN-500	KBN-500
GROSS INPUT (MBH)	500	500
GROSS OUTPUT (MBH)	467	467
THERMAL EFFICIENCY (%)	0.934	93.4%
DELTA TEMP., DEG F	20	20
FLOW, GPM	47	47
HEAD (FT)	26	26
FLUID	WATER	WATER
SHIPPING WEIGHT (LBS)	310	310
OVERALL LENGTH (IN.)	32"	32"
WIDTH (IN.)	16"	16"
HEIGHT (IN.)	43"	43"
VENT CONN. DIA (IN.)	4"	4"
VENT MATERIAL	SS	SS
VENT CATEGORY	IV	IV
AIR INLET CONN. (IN.)	4"	4"
WATER CONN. (IN.)	2"	2"
GAS SUPPLIED	NAT	NAT
GAS CONN. (IN.)	1"	1"
FULL MOD.	5:1 MOD	5:1 MOD
MIN / MAX GAS PRS. IN. WG.	4" TO 10.5"	4" TO 10.5"
ELECTRICAL	120-140	120-140
TOTAL AMPS	1.7	1.7

AIR COOLED CONDENSING UNIT SCHEDULE	
TAG	CU1
LOCATION	AT GRADE
SERVICE	HP-1 THRU HP-3
MFR-MODEL	DAIKIN - Multi Split
MODEL	3MXS24VJU
TONS	2
V-PH-HZ	208-140
REFRIGERANT	410A
COOLING CAPACITY	24,000 BTU/HR
HEATING CAPACITY	18,000 BTU/HR
MIN OA TEMP COOL / HEAT	-4 F / 0 F
COMP QTY	1 INV
FAN QTY	2
UNIT MCA	17.8
UNIT MOP	20
MAX FUSE	25
COMPRESSOR R.L.A.	---
COMPRESSOR L.R.A.	---
MIN. COOLING STAGES	7% - 100%
COOLING EER	10.7
HEATING COP	3.2
OPERATING WEIGHT, lbs.	1200
DEPTH	15"
WIDTH	36"
HEIGHT	31"
NOTES	1. PROVIDE UNIT-MOUNTED FACTORY DISCONNECT SWITCH.

DUCT HEATING COIL SCHEDULE														
TAG	SERVES	AIRFLOW	LENGTH	HEIGHT	FACE VEL	EDB	LDB	MBH	MAX APD	GPM	EWT	LWT	MAX WPD	RUNOUT SIZE
HC-1	ERU-1	850	22	14	460	40	80	36.7	0.2"	2.5	170	140	5'	3/4"
HC-2	AHU-1	3,250	36	24	542	100	130	103.7	0.2"	7.0	170	145	7'	1 1/4"

PLUMBING FIXTURE SCHEDULE						
TAG	DESCRIPTION	BRANCH SIZES			NOTES	
		CW	HW	VENT	WASTE	
P-1	WATER CLOSET- FLUSH VALVE, WALL HUNG	1"	---	1-1/2"	3"	BATTERY SENSOR
P-1A	WATER CLOSET- FLUSH VALVE, FLOOR MOUNT	1"	---	1-1/2"	3"	BATTERY SENSOR
P-2	URINAL- FLUSH VALVE, 1/8 GAL/FLUSH	3/4"	---	1-1/2"	2"	BATTERY SENSOR
P-3	LAVATORY, WALL HUNG	1/2"	1/2"	1-1/2"	2"	BATTERY SENSOR
P-4	BREAK ROOM KITCHEN SINK	1/2"	1/2"	1-1/2"	1-1/2"	
P-5	MOP/SERVICE BASIN	3/4"	3/4"	1-1/2"	3"	PROVIDE CHECK VALVES AT WATER INLETS
WHYD	WALL HYDRANT	3/4"	---	---	---	
HB	HOSE BIBB	1/2"	---	---	---	
DF	DRINKING FOUNTAIN	1/2"	---	1-1/2"	2"	



RADIANT FLOOR CIRCUIT SCHEDULE											
AREA SERVED / MANIFOLD NO.	CIRCUIT NO.	FLOOR AREA (sq ft)	UNIT HEAT (sq ft)	LENGTH (ft) (Circuit + Tail)	FLOW RATE (gal/min)	HEAD LOSS (Ft) (of water)	SUPPLY TEMP (° F)	SURFACE TEMP (° F)	DESIGN TEMP DROP (° F)	TUBE SPACING (in)	TUBE SIZE
WAITING / MANIFOLD #1	1	270	20	280	1.30	6.20	96	75	10	12	5/8"
	2	270	20	280	1.30	6.20	96	75	10	12	5/8"
	3	270	20	280	1.30	6.20	96	75	10	12	5/8"
	4	270	20	280	1.30	6.20	96	75	10	12	5/8"
	5	270	20	280	1.30	6.20	96	75	10	12	5/8"
	6	270	20	280	1.30	6.20	96	75	10	12	5/8"
						6.2 Total @ loops					

REGISTERS - GRILLES - DIFFUSERS (RGD) SCHEDULE										
TAG	PRICE MODEL	TYPE	NECK SIZE (W X H)	FACE SIZE	CFM RANGE	MAX TOTAL P.D. (IN. W.C.)	MAX NC LEVEL	BORDER TYPE	BLOW	NOTES
S-1	ASPD	SQ. CEILING SUPPLY DIFFUSER	6" DIA	24" X 24"	0-150	0.07"	16	LAY-IN	4-WAY	
S-2	ASPD	SQ. CEILING SUPPLY DIFFUSER	8" DIA	24" X 24"	151-300	0.07"	19	LAY-IN	4-WAY	
S-3	LV1	LINEAR VANE 1 WAY BLOW	60" X 6 5/8"	62" X 6 5/8"	130FT	0.04"	32	SURFACE MT.		1
S-4	LV1	LINEAR VANE 1 WAY BLOW	96" X 6 5/8"	---	---	---	---	SURFACE MT.		2
R-1	630	ALUM. RETURN GRILLE, 3/4" SPACING, 35 DEG VANES	8" X 8"	10" X 10"	0-200	0.05"	23	SURFACE MT.		
R-2	630	ALUM. RETURN GRILLE, 3/4" SPACING, 35 DEG VANES	12" X 12"	12" X 12"	171-440	0.05"	27	SURFACE MT.		
R-3	80FF	1/2" X 1/2" X 1/2" ALUM. EGGCRATE FILTER RETURN	24" X 8"	26" X 10"	300	0.04"	34	SURFACE MT.		
R-4	LV1	LINEAR VANE 1 WAY RETURN	60" X 6 5/8"	62" X 6 5/8"	130FT	---	35	SURFACE MT.		

ELECTRIC DOMESTIC WATER HEATER SCHEDULE													
TAG	SERVES	TYPE	MANUFACTURER	MODEL	VOLTS	PHASE	HEAT INPUT (KW)	FLOW / REC (GPM)	TEMP RISE (DEG-F)	WATER STORAGE (GAL)	HEIGHT (INCHES)	WIDTH (INCHES)	
DWH-1	EXISTING TOILETS	FLOOR	STATE COMMERCIAL	PCE 40 20LSA	208	3	4.5	23	3	80	40	33"	24" DIA
DWH-2	WAITING AREA TOILETS	FLOOR	STATE COMMERCIAL	PCE 40 20LSA	208	3	4.5	23	3	80	40	33"	24" DIA

AIR HANDLING UNIT SCHEDULE																				
TAG	SERVES	TRANE MODEL	CABINET TYPE	CABINET DIMENSIONS (IN) L' X W' X H'	SUPPLY CFM	ESP	FRESH AIR CFM	HOT WATER HEATING COIL					ELECTRICAL			WEIGHT (LBS)				
								ROWS	EAT deg-F	LAT deg-F	TMBH	EWT deg-F	GPM @ 20 F ΔT	APD-in	FLUID PD - R		MCA	MAX Fuse	MOTOR HP	V-HZ-PH
AHU-1	WAITING AREA	BCHC090	HORIZ. CONCEAL	49" x 48" x 22"	3,250	1.0"	VIA ERU	2	60.0	102.0	190.0	170.0	20.0	0.2	7.0	10.8	15	2	208-60-3	350

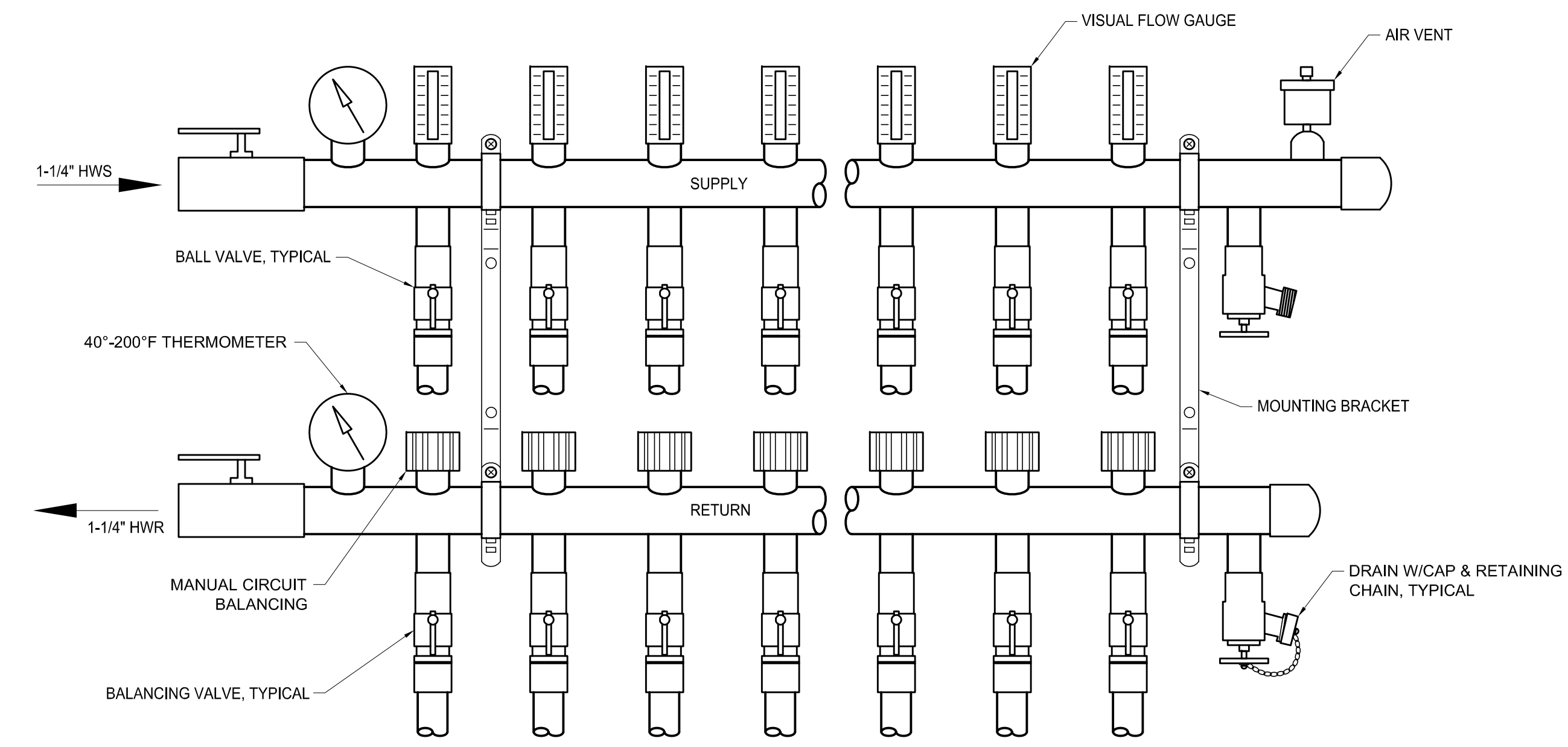
MULTI SPLIT INDOOR HEAT PUMP SCHEDULE																					
TAG	DAIKIN VRV MODEL NUMBER	AREA SERVED	UNIT CONFIGURATION	TONS	FAN CFM H/M/L	ESP H/L	COOLING		HEATING		REFRIGERANT			ELECTRICAL		PHYSICAL					
							TOTAL COOLING BTUH	SENSIBLE BTUH	HEATING BTUH	TYPE	LIQUID PIPE SIZE	GAS PIPE SIZE	COND PIPE SIZE	CONTROL	V-PH-HZ	MCA	MAX FUSE SIZE	HEIGHT	WIDTH	DEPTH	NET WEIGHT (LBS)
HP-1	FDXS09LVJU	OFFICE 115	DUCTED CONCEALED	0.71	305/280/260	0.40 / 0.12	8,500	7,130	10,000	410A	1/4"	3/8"	1-1/32"	EXPAN VLV	208-160	0.9	15A	8"	28"	25"	50
HP-2	FDXS09LVJU	OFFICE 114	DUCTED CONCEALED	0.71	305/280/260	0.40 / 0.12	8,500	7,130	10,000	410A	1/4"	3/8"	1-1/32"	EXPAN VLV	208-160	0.9	15A	8"	28"	25"	50
HP-3	FDXS12LVJU	TICKET 111	DUCTED CONCEALED	1	305/280/260	0.40 / 0.12	11,500	8,280	11,500	410A	1/4"	3/8"	1-1/32"	EXPAN VLV	208-160	0.9	15A	11-13/16"	28"	25"	50

UNIT HEATER SCHEDULE																					
TAG	MFR-MODEL	SIZE	LOCATION	TYPE	EXPOSED FACE WIDTH	EXPOSED FACE HEIGHT	DEPTH	WEIGHT	MBH	CFM	EAT (DEG-F)	LAT (DEG-F)	GPM	FLUID	EWT	LWT	MOTOR HP	ELECT	MAX WPD	PIPE RUNOUT SIZE	NOTES
CUH-1	TRANE FFE	200	MENS TOIL	RECESSED CEILING W/LOUVERS	2'-11 1/2"	2'-4"	10 3/8"	75 lbs	19.0	314	60	94.0	1.3	WATER	170.0	140.0	84W	120-160	7	3/4"	
CUH-2	TRANE FFE	200	WOMANS TOIL	RECESSED CEILING W/LOUVERS	2'-11 1/2"	2'-4"	10 3/8"	75 lbs	19.0	314	60	94.0	1.3	WATER	170.0	140.0	84W	120-160	7	3/4"	
UH-1	TRANE S	S-A18	MEZZANINE	HORIZONTAL UH	1'-4"	1'-6"	9.5"	30 lbs	13.5	210	60	90.0	1.9	WATER	170.0	140.0	16 W	120-160	3'	3/4"	

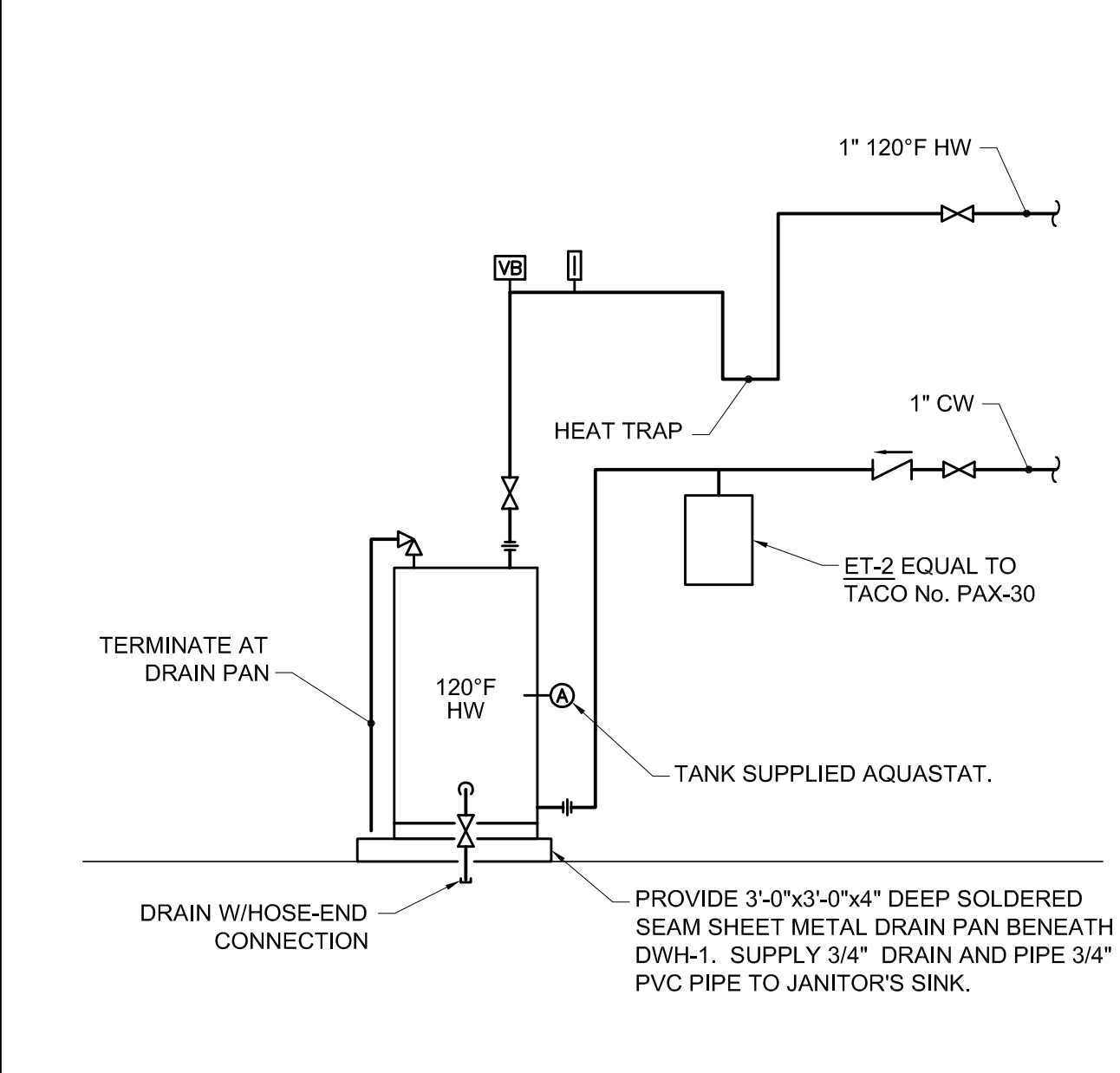
PUMP SCHEDULE																				
TAG	SYSTEM	LOCATION	MFR.	MODEL	SUCTION DISCH.	TYPE	PUMPED FLUID	PERFORMANCE					ELECTRICAL		ELECTRICAL COORDINATION		NOTES			
								GPM	HEAD	RPM	NPSH	BHP	NOL HP	MOTOR HP	VOLTS/PH (60 Hz.)	VFD FURN. BY		STARTER FURN. BY	DISC. SWITCH FURN. BY	
P-1	HEATING BUILDING LOOP	MECHANICAL ROOM	GRUNDFOS	TP50-240/2-S-U-G-A-BUBE	2" x 2"	INLINE	WATER	90	50	3460	5.4	1.5	---	2	208/3/60	DIV 23	---	VFD	AUTO LEAD-LAG, 1	
P-2	HEATING BUILDING LOOP	MECHANICAL ROOM	GRUNDFOS	TP50-240/2-S-U-G-A-BUBE	2" x 2"	INLINE	WATER	90	50	3460	5.4	1.5	---	2	208/3/60	DIV 23	---	VFD	AUTO LEAD-LAG, 1	
P-3	RADIANT FLOOR LOOP	MEZZANINE	GRUNDFOS	MAGNA 32-60 F	1-1/4" x 1-1/4"	INLINE	WATER	8	15	---	---	---	---	1/6	208/3/60	---	---	---	DIV 25	
P-4	BOILER #1 PUMP	MECHANICAL ROOM	GRUNDFOS	MAGNA 65-120 F	2-1/2" x 2-1/2"	INLINE	WATER	47	30	---	---	---	---	1	208/1/60	---	---	---	DIV 25	1
P-5	BOILER #2 PUMP	MECHANICAL ROOM	GRUNDFOS	MAGNA 65-120 F	2-1/2" x 2-1/2"	INLINE	WATER	47	30	---	---	---	---	1	208/1/60	---	---	---	DIV 25	1

C1 DETAIL ~ DOMESTIC WATER ENTRANCE

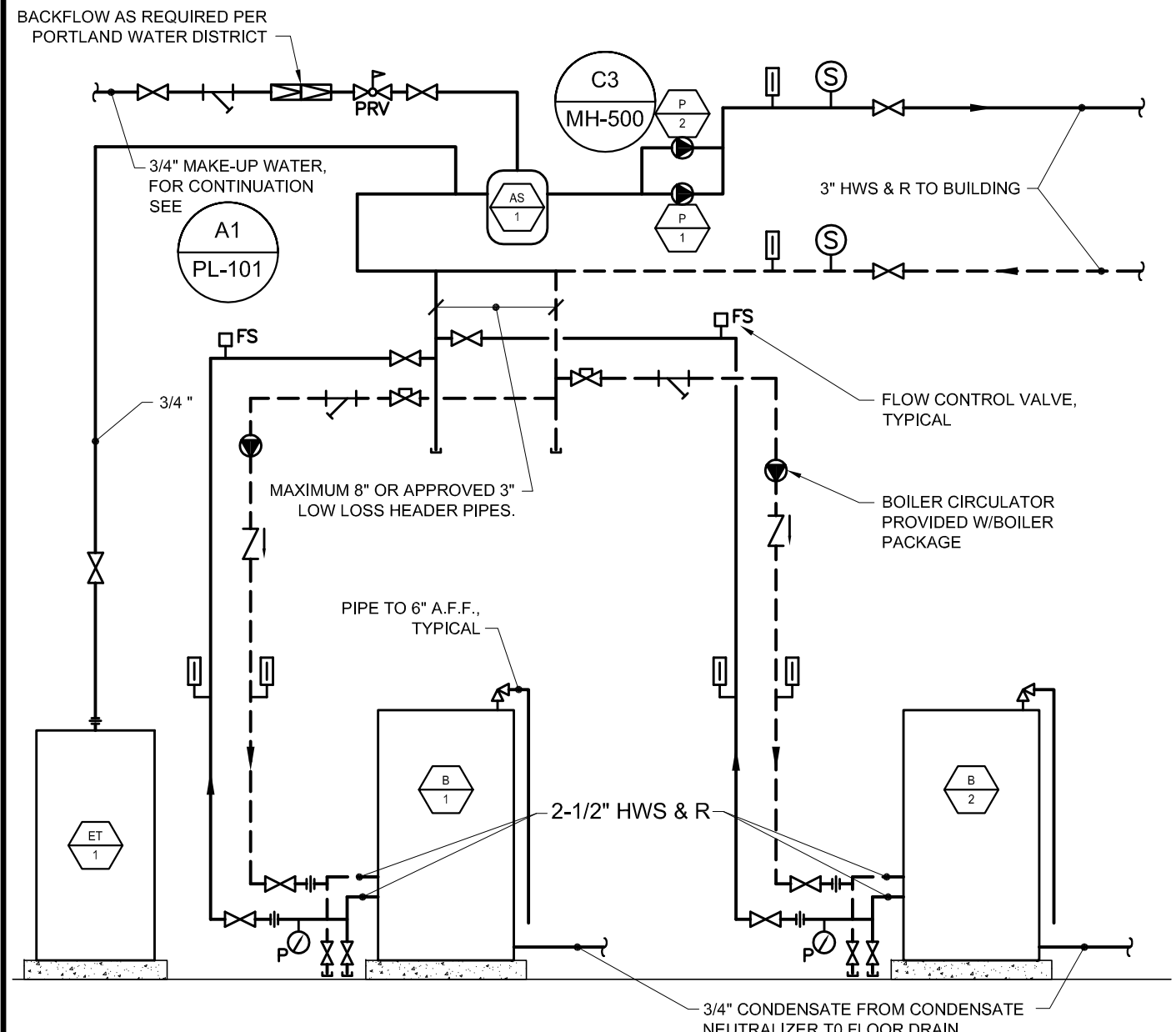
C5 MECHANICAL SCHEDULES



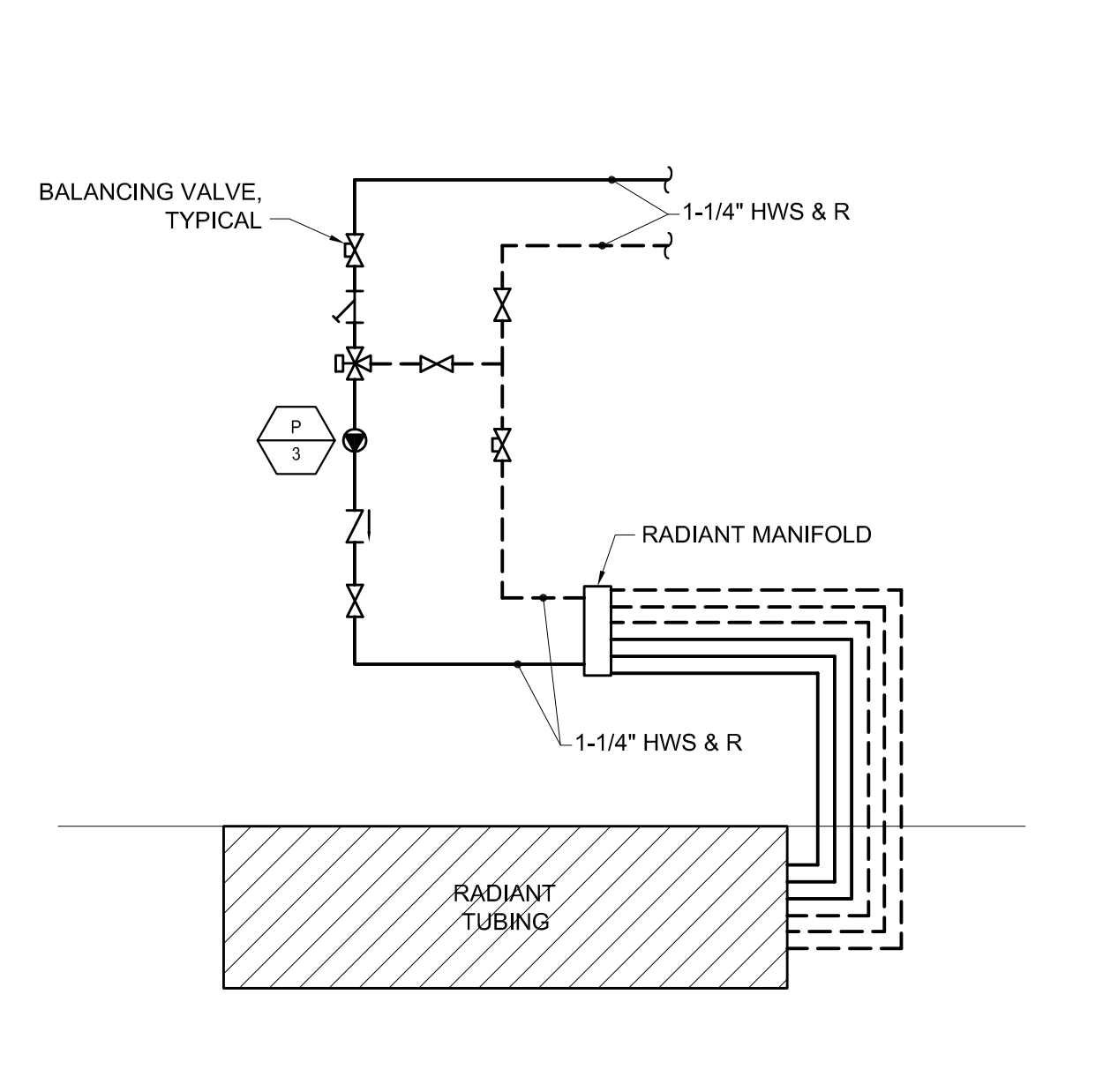
A1 DETAIL ~ RADIANT HEAT MANIFOLD



A5 DETAIL ~ DHW PIPING SCHEMATIC (ELECTRIC)



A7 DETAIL ~ BOILER PIPING SCHEMATIC



A9 DETAIL ~ RADIANT LOOP PIPING

Allied Engineering
Structural Mechanical Electrical Commissioning

160 Veranda Street
Portland, Maine 04103
T: 207.221.2260
F: 207.221.2266
Web: www.allied-eng.com

SSA
Scott Simons Architects
75 York Street, Portland, Maine 04101
www.simonsarchitects.com
207.772.4656

PROJECT NAME:
CASCO BAY FERRY TERMINAL
RENOVATIONS & ADDITIONS
56 COMMERCIAL STREET
PORTLAND, MAINE 04101

SEAL: [Professional Engineer Seal]

THIS DRAWING IS THE PROPERTY OF SCOTT SIMONS ARCHITECTS (SSA) AND IS NOT TO BE COPIED OR REPRODUCED IN PART OR WHOLE.
2012 © SCOTT SIMONS ARCHITECTS, LLC

REVISION:

NO.	DATE	DATE	DATE	DATE	DATE
1					
2					
3					
4					
5					
6					

DATE OF ISSUE: MAY 14, 2013
PROJECT NUMBER: 2011-0270
STATUS: ISSUED FOR BIDDING

MECHANICAL DETAILS AND SCHEDULES

MH-600
2008 © Scott Simons Architects LLC