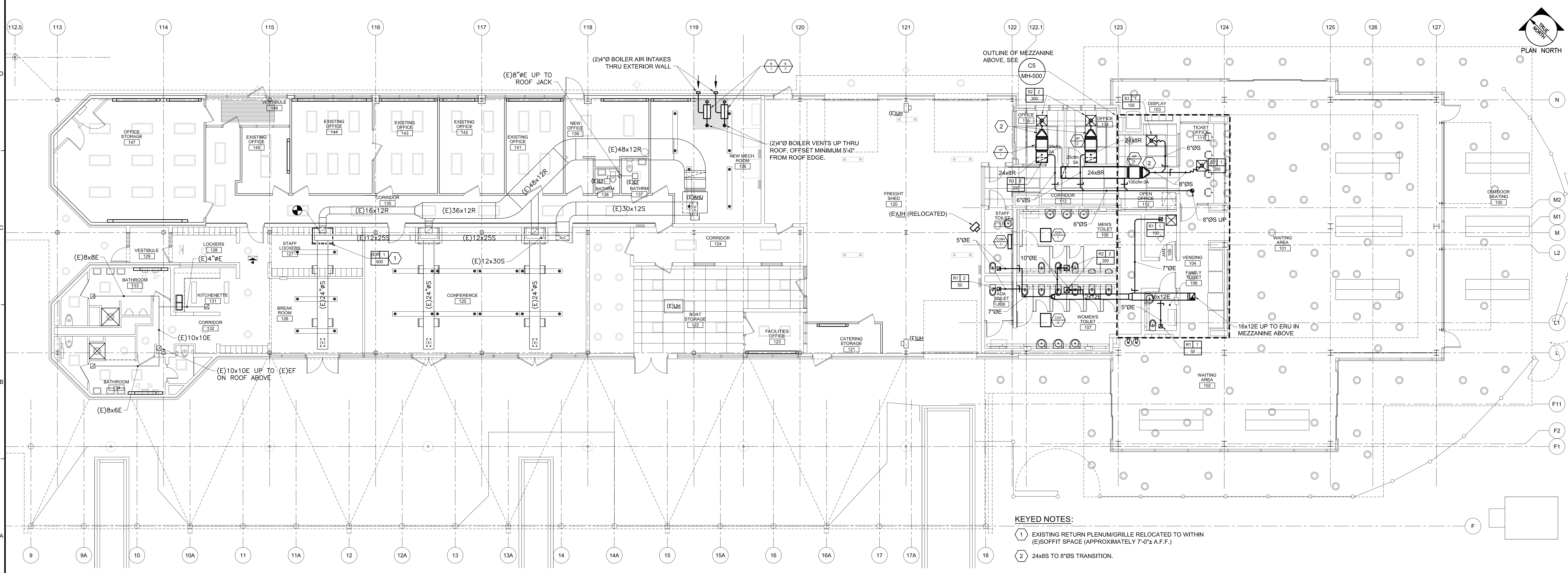
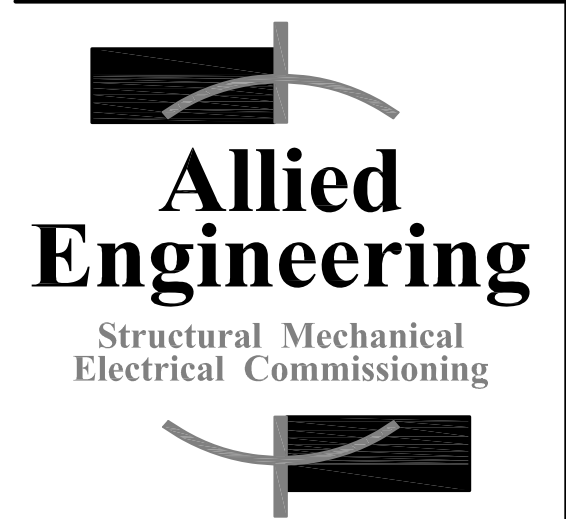


E1 MECHANICAL DEMOLITION PLAN
1/8" = 1'-0"



A1 MECHANICAL PLAN
1/8" = 1'-0"

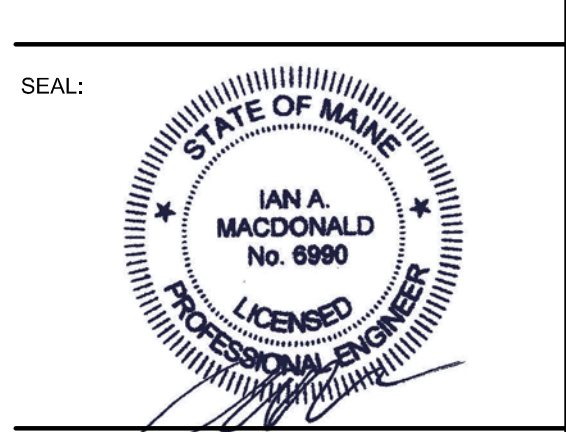


**160 Veranda Street
Portland, Maine 04103**
T: 207.221.2260
F: 207.221.2266
Web: www.allied-eng.com

Allied Project No: 12008
Cad File: 12008M.dwg
Checked By: IAM



PROJECT NAME:
**CASCO BAY FERRY
TERMINAL**
RENOVATIONS & ADDITIONS
56 COMMERCIAL STREET
PORTLAND, MAINE 04101



THIS DRAWING IS THE PROPERTY OF SCOTT SIMONS ARCHITECTS (SSA) AND IS NOT TO BE COPIED OR REPRODUCED IN PART OR WHOLE. 2012 © SCOTT SIMONS ARCHITECTS, LLC

REVISION:

NO.	DATE
1	DATE
2	DATE
3	DATE
4	DATE
5	DATE
6	DATE

DATE OF ISSUE: MAY 14, 2013
PROJECT NUMBER: 2011-0270
STATUS: ISSUED FOR BIDDING

**MECHANICAL
PLANS**

MH-100
2008 © Scott Simons Architects LLC

N:\Projects\2013\12008 - Casco Bay Ferry Terminal\01 Drawing Files\12008M.dwg May 13, 2013 - 8:19am