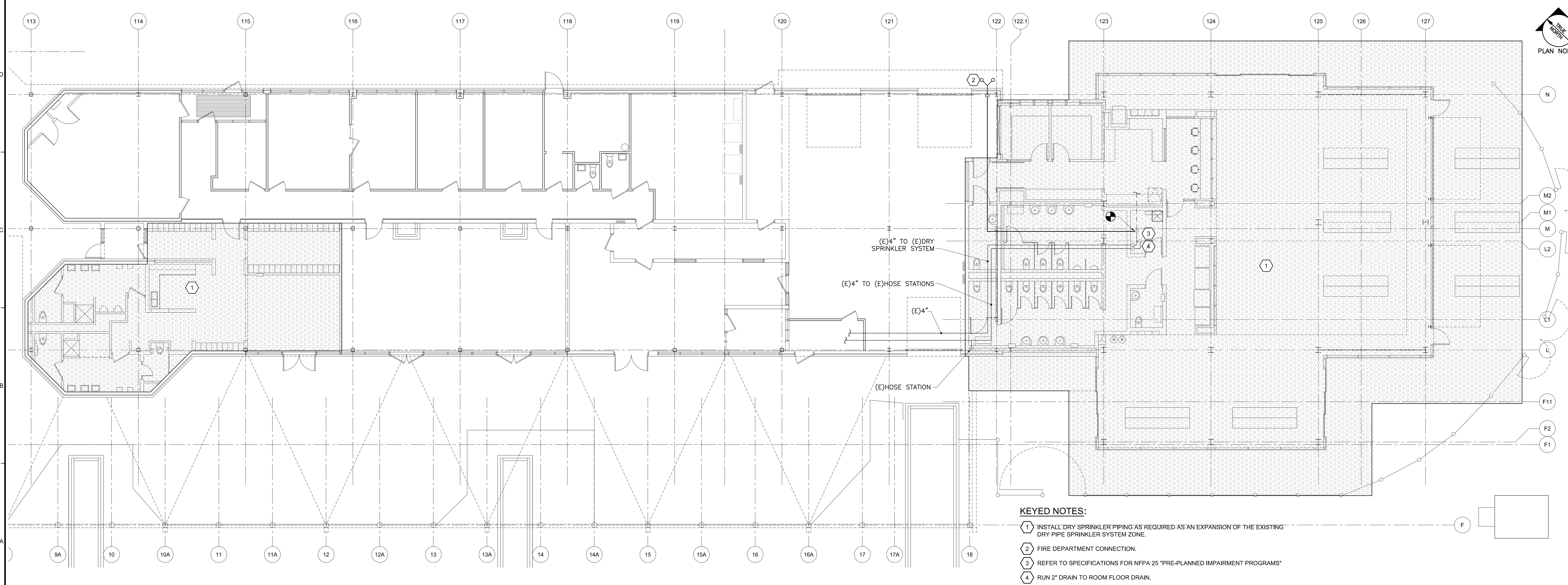


DEMOLITION KEYED NOTES:

- 1 EXISTING SPRINKLER ENTRANCE (4" DRY PIPE AND 4" HOSE STATIONS) AND DRY PIPE AIR COMPRESSOR TO REMAIN. REMOVE (E) FIRE DEPARTMENT CONNECTION BACK TO CHECK VALVE. REMOVE (E) DRAIN TO INSIDE OF WALL.
- 2 REMOVE (E) SPRINKLER PIPING AND HEADS AS REQUIRED FOR NEW WORK.

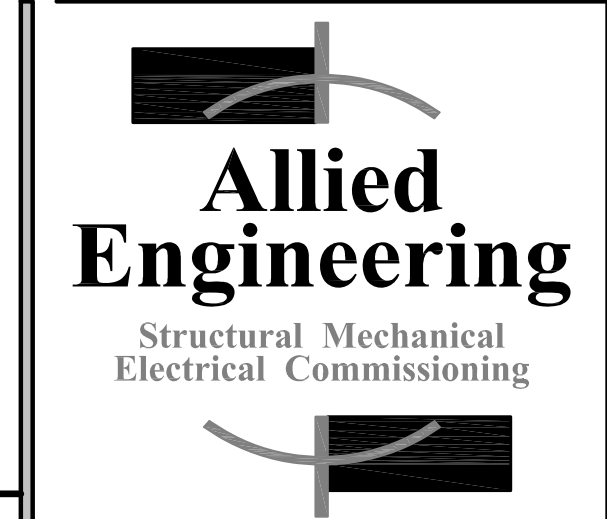
E1 FIRE PROTECTION DEMOLITION PLAN
1/8" = 1'-0"



KEYED NOTES:

- 1 INSTALL DRY SPRINKLER PIPING AS REQUIRED AS AN EXPANSION OF THE EXISTING DRY PIPE SPRINKLER SYSTEM ZONE.
- 2 FIRE DEPARTMENT CONNECTION.
- 3 REFER TO SPECIFICATIONS FOR NFPA 25 'PRE-PLANNED IMPAIRMENT PROGRAMS'
- 4 RUN 2" DRAIN TO ROOM FLOOR DRAIN.

A1 FIRE PROTECTION PLAN
1/8" = 1'-0"

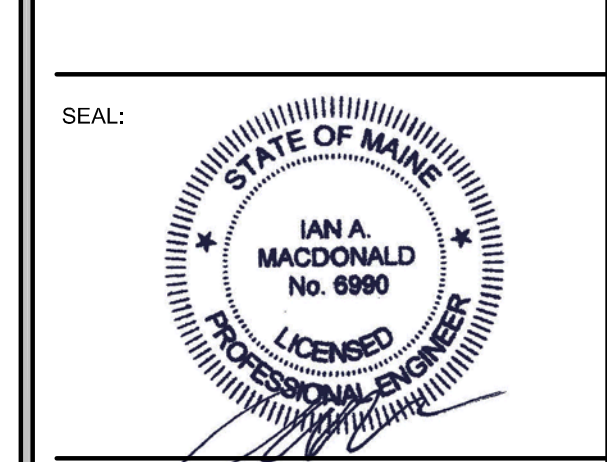


**160 Veranda Street
Portland, Maine 04103**
T: 207.221.2260
F: 207.221.2266
Web: www.allied-eng.com

Allied Project No: 12008
Cad File: 12008M.dwg
Checked By: IAM



CASCO BAY FERRY TERMINAL
RENOVATIONS & ADDITIONS
56 COMMERCIAL STREET
PORTLAND, MAINE 04101



REVISION:

NO.	DATE	DESCRIPTION
1		
2		
3		
4		
5		
6		

DATE OF ISSUE: MAY 14, 2013
PROJECT NUMBER: 2011-0270
STATUS: ISSUED FOR BIDDING

FIRE PROTECTION PLANS

FP-100

N:\Projects\2013\12008 - Casco Bay Ferry Terminal\01 Drawing Files\12008M.dwg May 13, 2013 8:22am