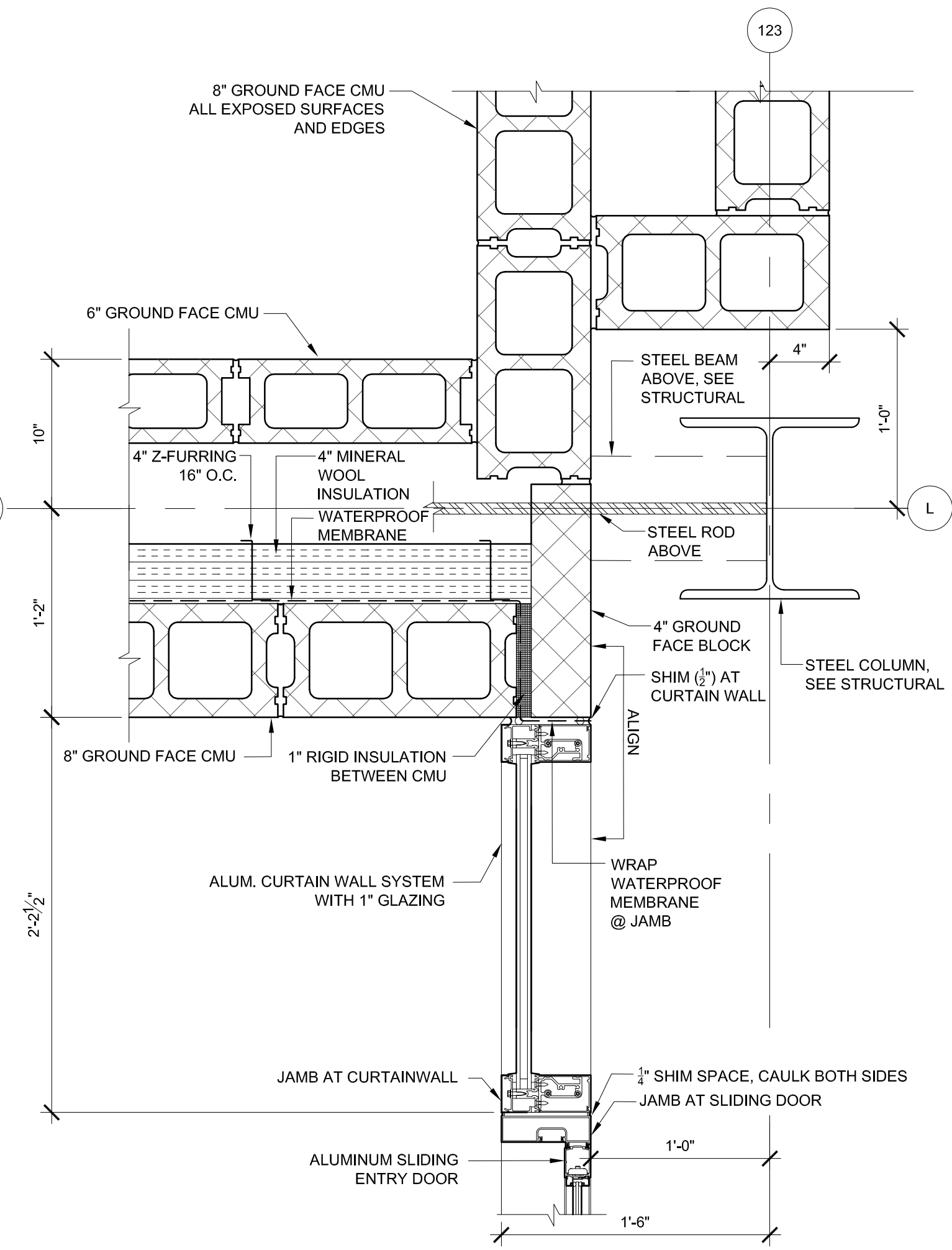
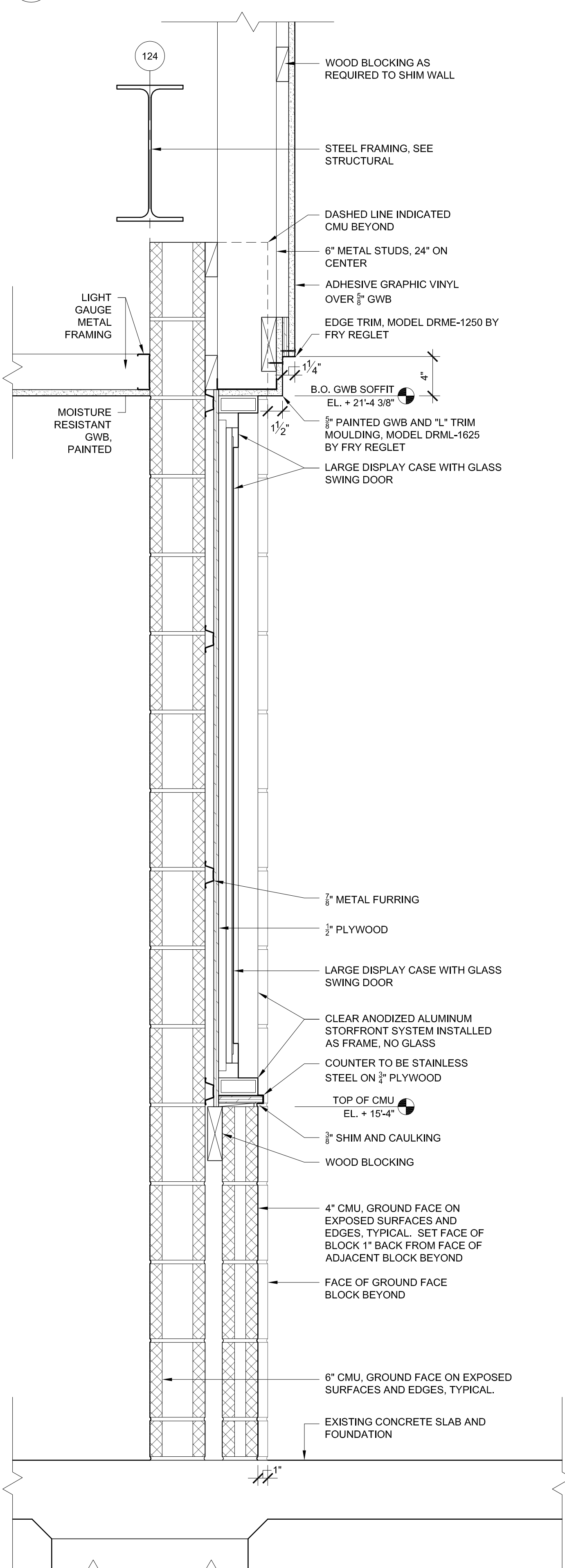


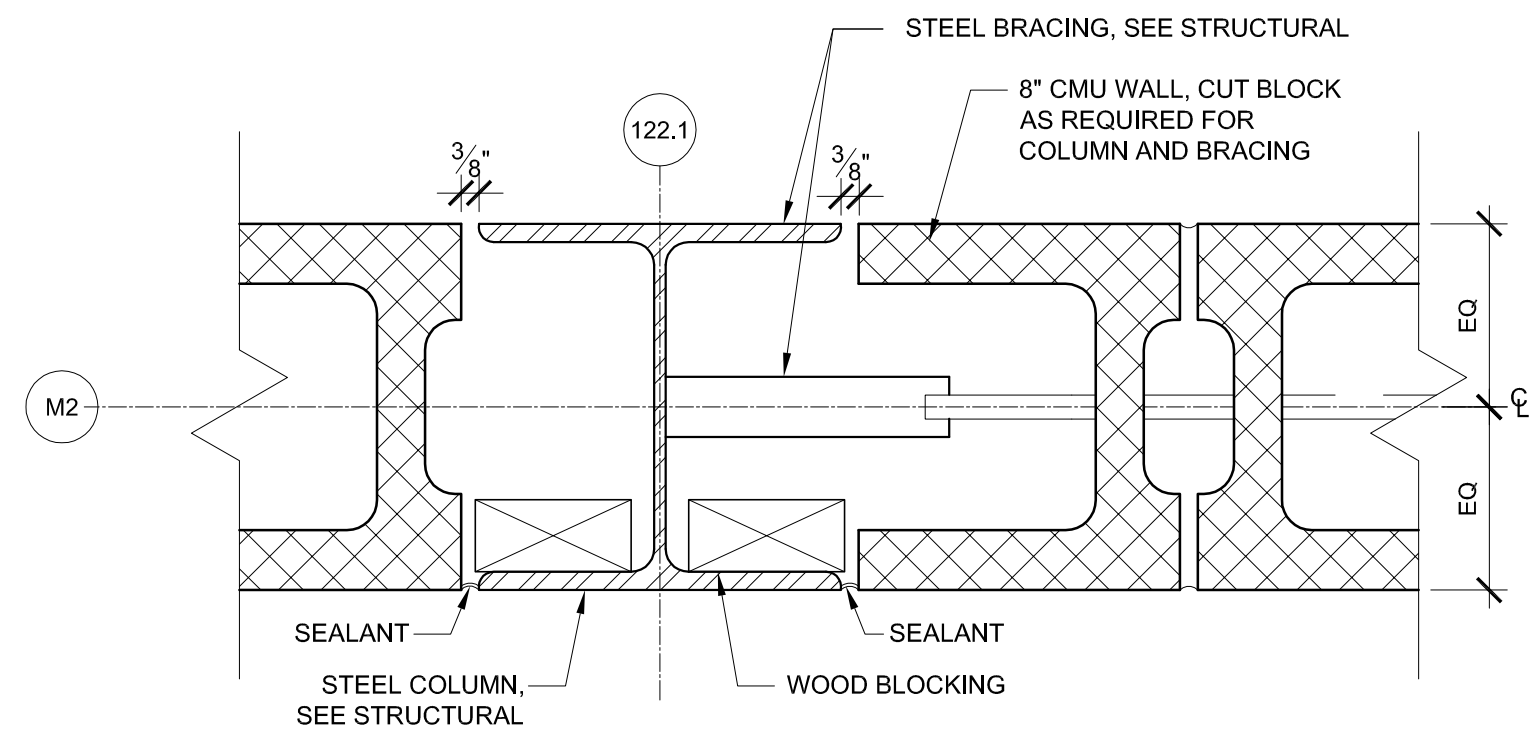
**5 PLAN DETAIL AT EXTERIOR WALL**  
SCALE: 1 1/2" = 1'-0"



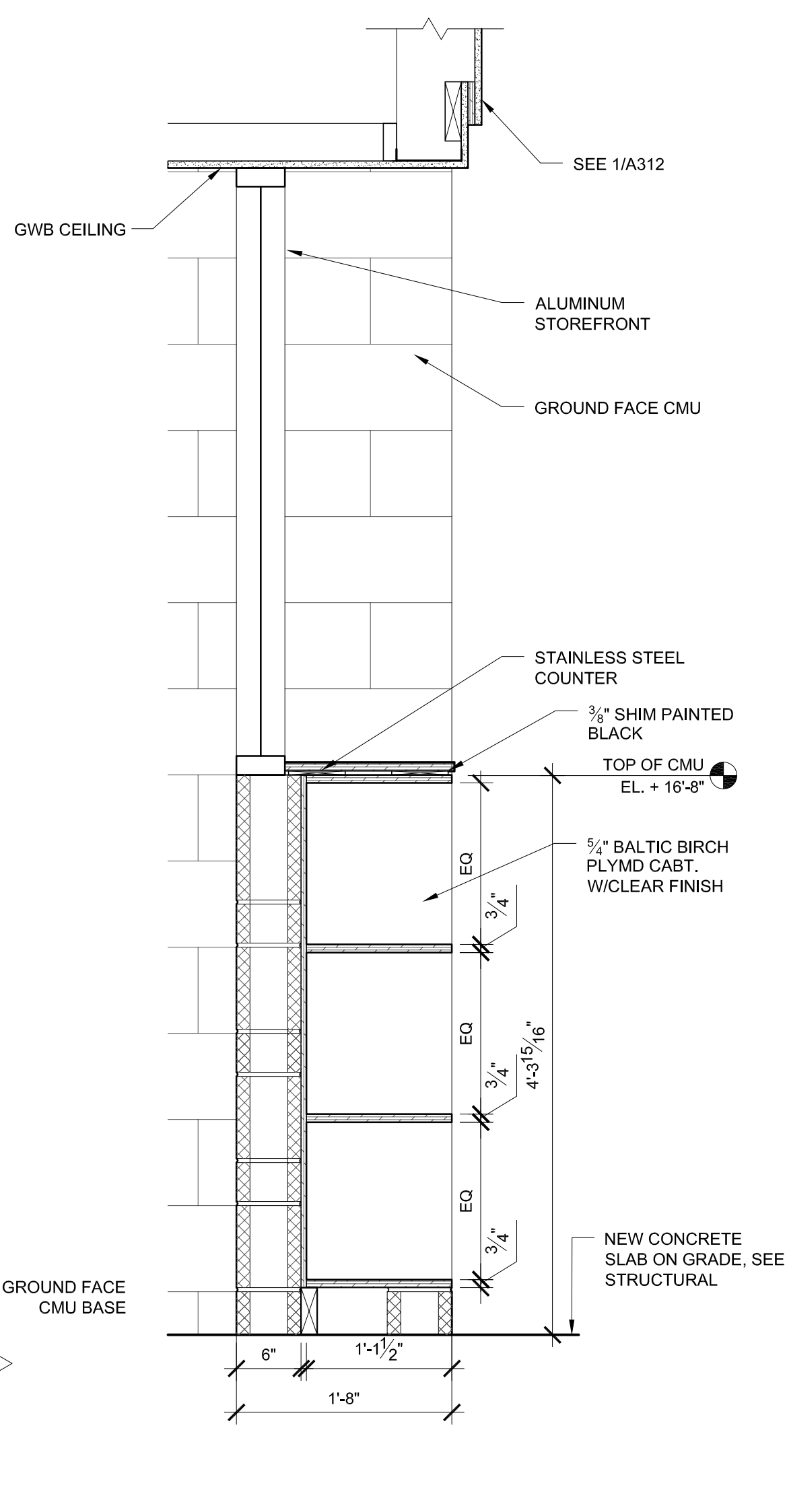
**6 PLAN DETAIL AT EXTERIOR WALL / CURTAIN WALL**  
SCALE: 1 1/2" = 1'-0"



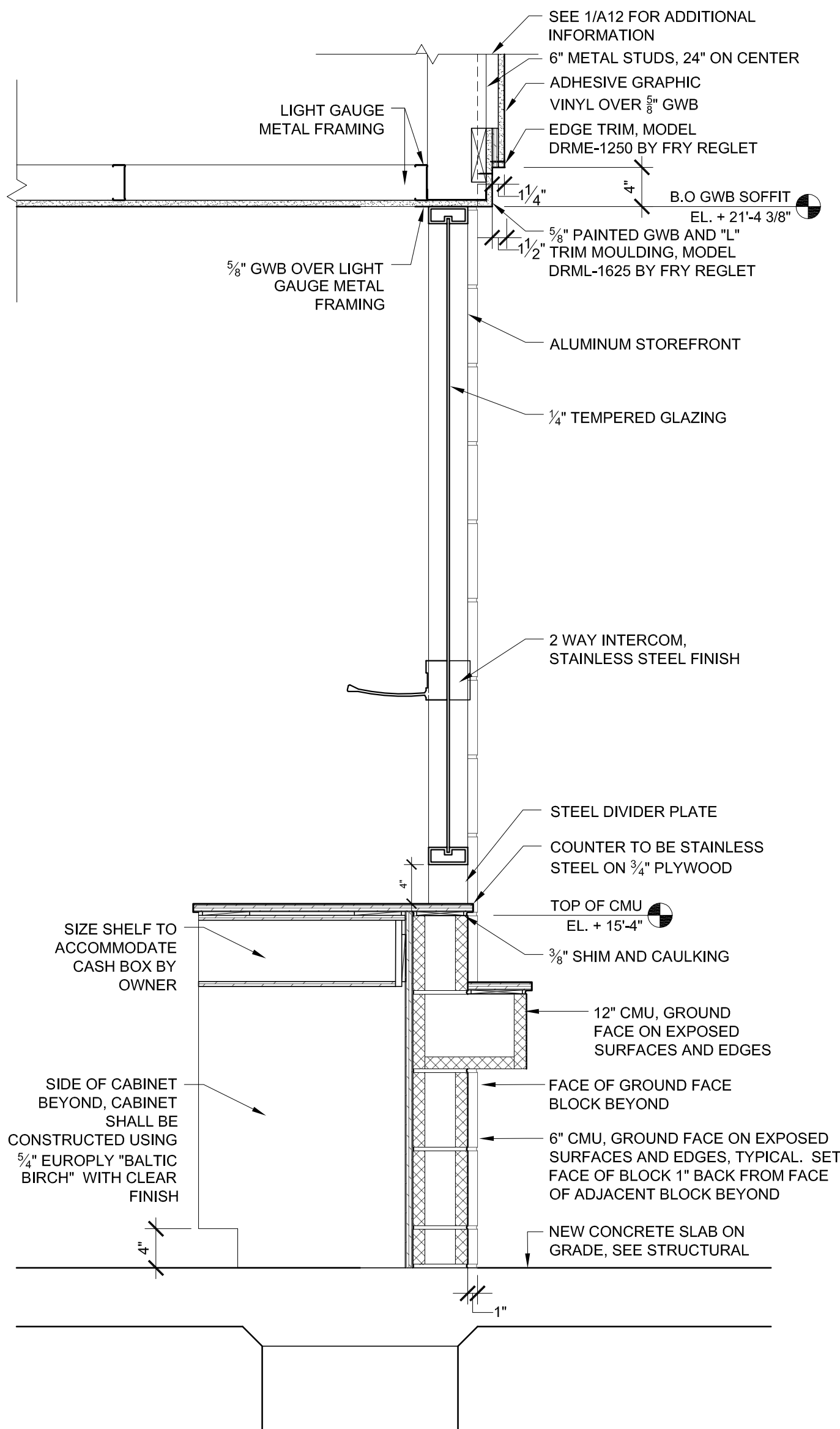
**1 SECTION AT DISPLAY CABINETS**  
SCALE: 1 1/2" = 1'-0"



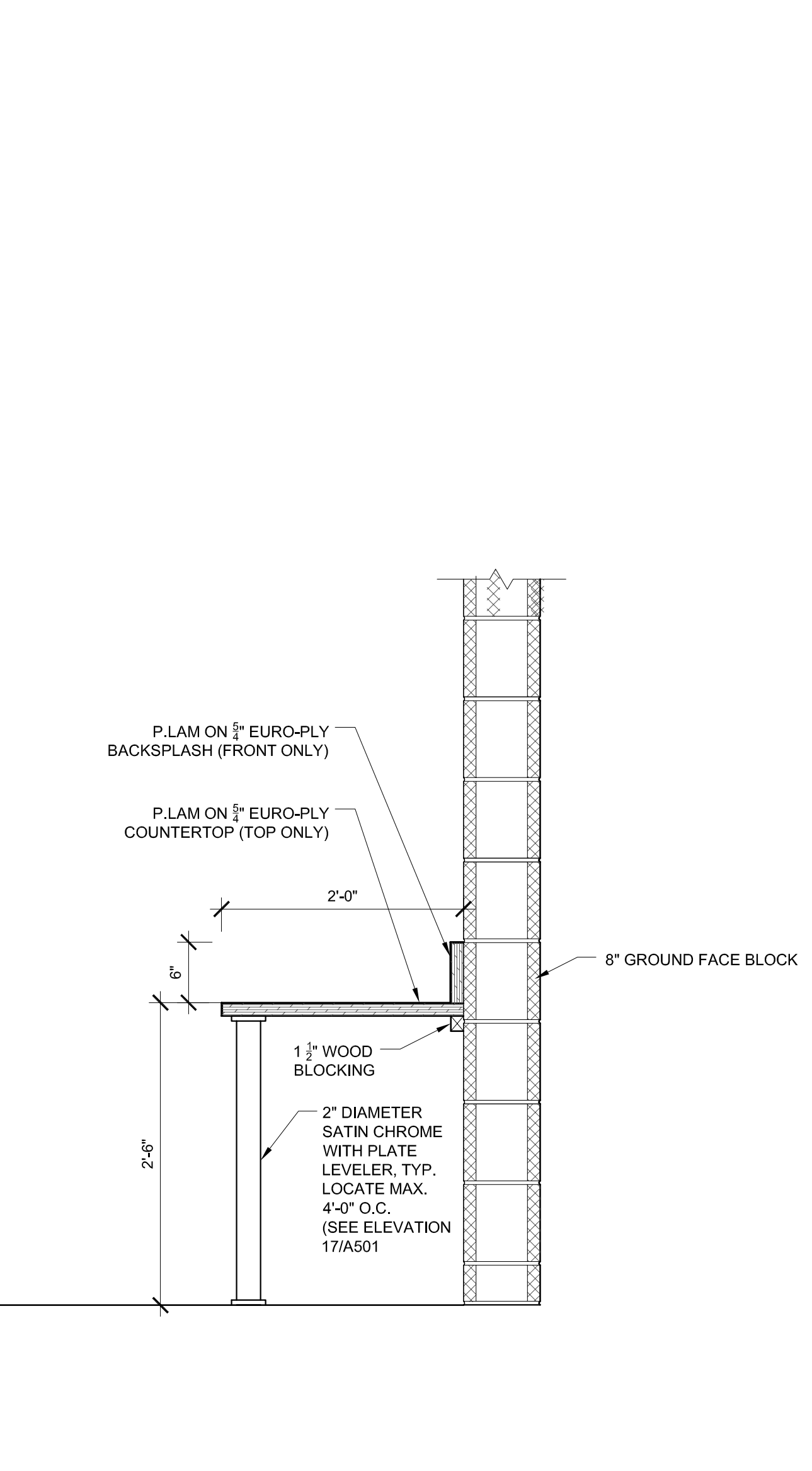
**7 PLAN DETAIL AT COLUMN GRID 122.1/M2**  
SCALE: 3" = 1'-0"



**2 SECTION AT DISPLAY CABINETS**  
SCALE: 1" = 1'-0"



**3 SECTION AT TICKET COUNTER**  
SCALE: 1" = 1'-0"



**4 SECTION AT WORK SURFACE**  
SCALE: 1" = 1'-0"

**SSA**  
Scott Simons Architects  
75 York Street, Portland, Maine 04101  
www.simonsarchitects.com  
207.772.4656

PROJECT NAME:  
**CASCO BAY FERRY TERMINAL**  
RENOVATIONS & ADDITIONS  
56 COMMERCIAL STREET  
PORTLAND, MAINE 04101  
FEDERAL PROJECT NO. FBD-1836 (300) X  
STATE WIN NO. 18363.10

SEAL:  
**REGISTERED ARCHITECT**  
SCOTT R. SIMONS  
NO. 2034  
STATE OF MAINE

THIS DRAWING IS THE PROPERTY OF SCOTT SIMONS ARCHITECTS (SSA) AND IS NOT TO BE COPIED OR REPRODUCED IN PART OR WHOLE.  
2015 © SCOTT SIMONS ARCHITECTS, LLC

REVISIONS:

DATE OF ISSUE:	MAY 14, 2013
PROJECT NUMBER:	2011-0270
STATUS:	ISSUED FOR BIDDING

**WALL SECTIONS AND SECTION DETAILS**

**A312**