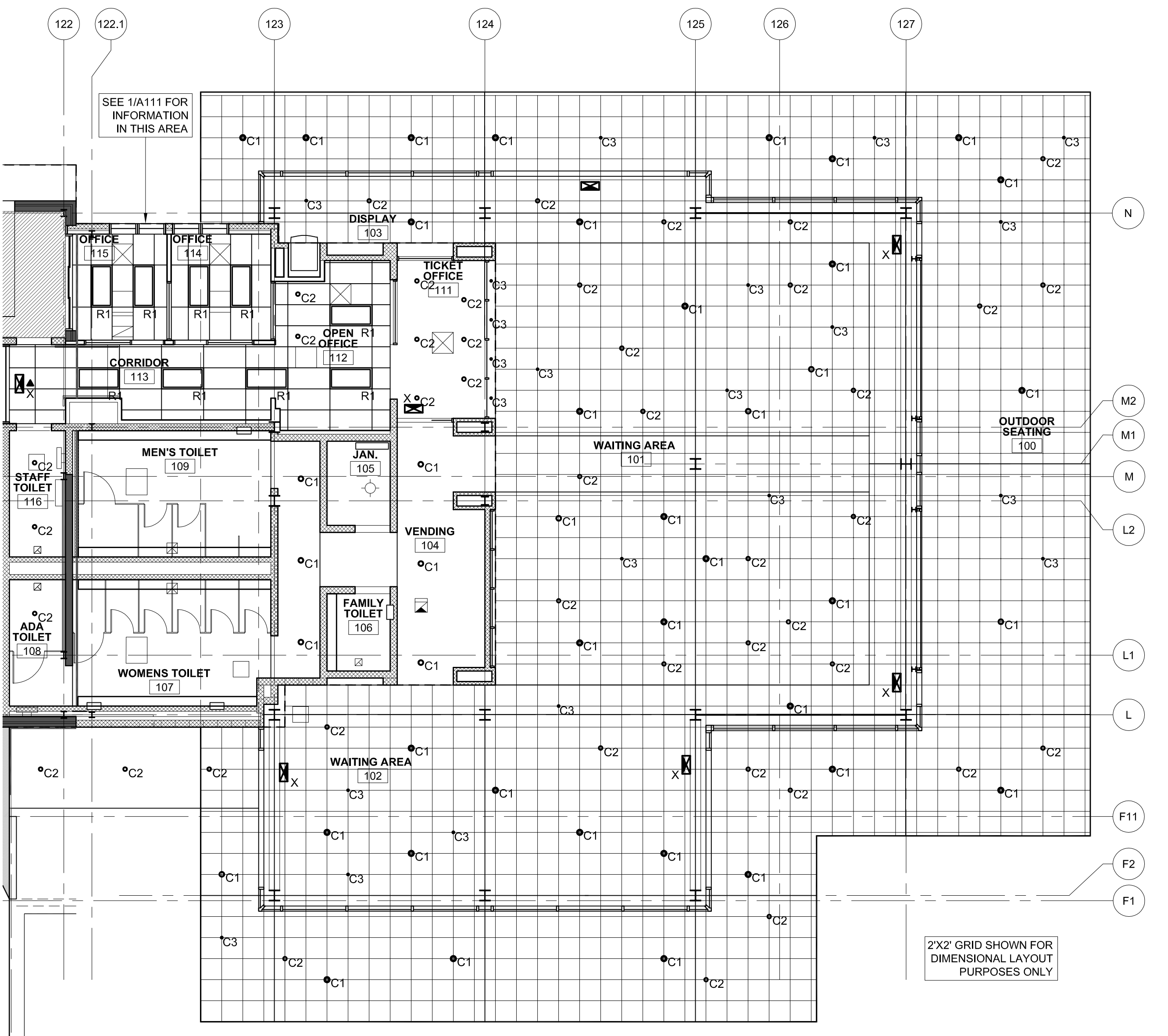
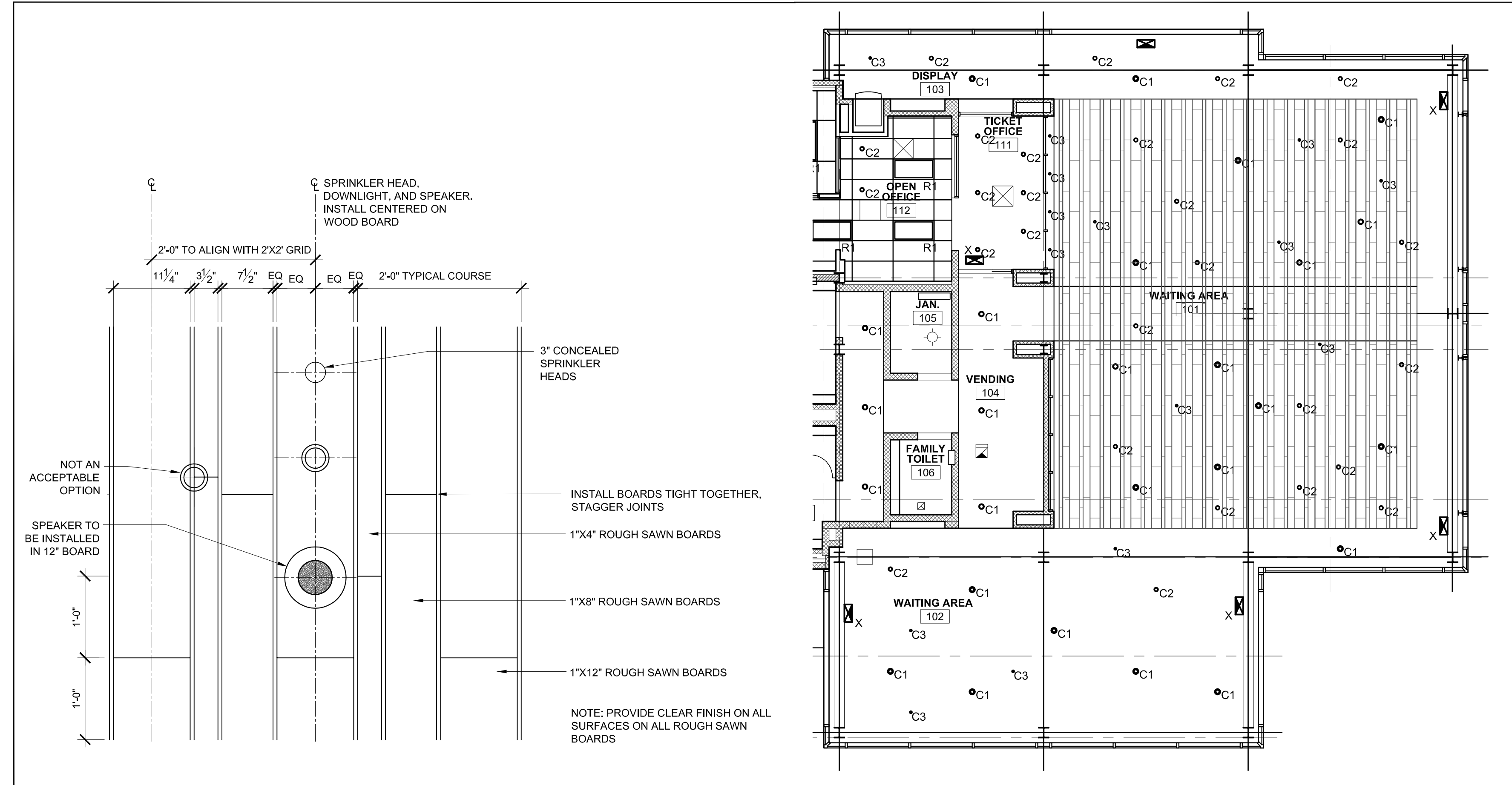


1 REFLECTED CEILING PLAN
SCALE: 1/8" = 1'-0"

- GENERAL RCP NOTES:
- REFER TO THIS PLAN FOR DIMENSIONS AND LOCATIONS OF ALL CEILING MOUNTED ITEMS. REFER TO ELECTRICAL AND MECHANICAL DRAWINGS FOR QUANTITIES AND PRODUCT DESCRIPTIONS.
 - DIMENSIONS SHOWN ARE TO CENTERLINES OF ITEMS. LINEAR LAYOUTS OF ITEMS NOT DIMENSIONED ARE REQUIRED TO BE EQUALLY SPACED ON CENTER WITHIN A DEFINED AREA.
 - COORDINATE ALL INSTALLATIONS WITH FIRE PROTECTION SYSTEMS.
 - PROVIDE FLUSH, PAINTABLE ACCESS PANELS AS NECESSARY IN HARD CEILINGS FOR ACCESS TO MECHANICAL SYSTEMS.
 - PROVIDE EXPANSION JOINT IN CEILING AS NOTED ON PLAN (EJ). JOINT SHALL ALLOW FOR 2" MOVEMENT.
 - IN GWB CEILINGS PROVIDE FLUSH ACCESS PANELS AS NECESSARY TO ACCESS VALVE, SERVICE POINTS, SPRINKLER VALVES, ETC.



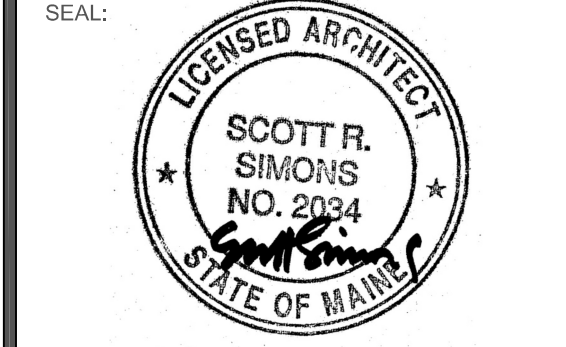
2 WAITING AREA LIGHTING LAYOUT PLAN
SCALE: 1/8" = 1'-0"



2 ALTERNATE #03: WOOD CEILING PATTERN
SCALE: 1" = 1'-0", 1/8" = 1"

SSA
Scott Simons Architects
75 York Street, Portland, Maine 04101
www.simonsarchitects.com
207.772.4656

PROJECT NAME:
CASCO BAY FERRY TERMINAL
RENOVATIONS & ADDITIONS
56 COMMERCIAL STREET
PORTLAND, MAINE 04101
FEDERAL PROJECT NO. FBD-1836 (300) X
STATE WIN NO. 18363.10



THIS DRAWING IS THE PROPERTY OF SCOTT SIMONS ARCHITECTS (SSA) AND IS NOT TO BE COPIED OR REPRODUCED IN PART OR WHOLE.
2015 © SCOTT SIMONS ARCHITECTS, LLC

REVISIONS:

DATE OF ISSUE:	MAY 14, 2013
PROJECT NUMBER:	2011-0270
STATUS:	ISSUED FOR BIDDING

REFLECTED CEILING PLAN

A111