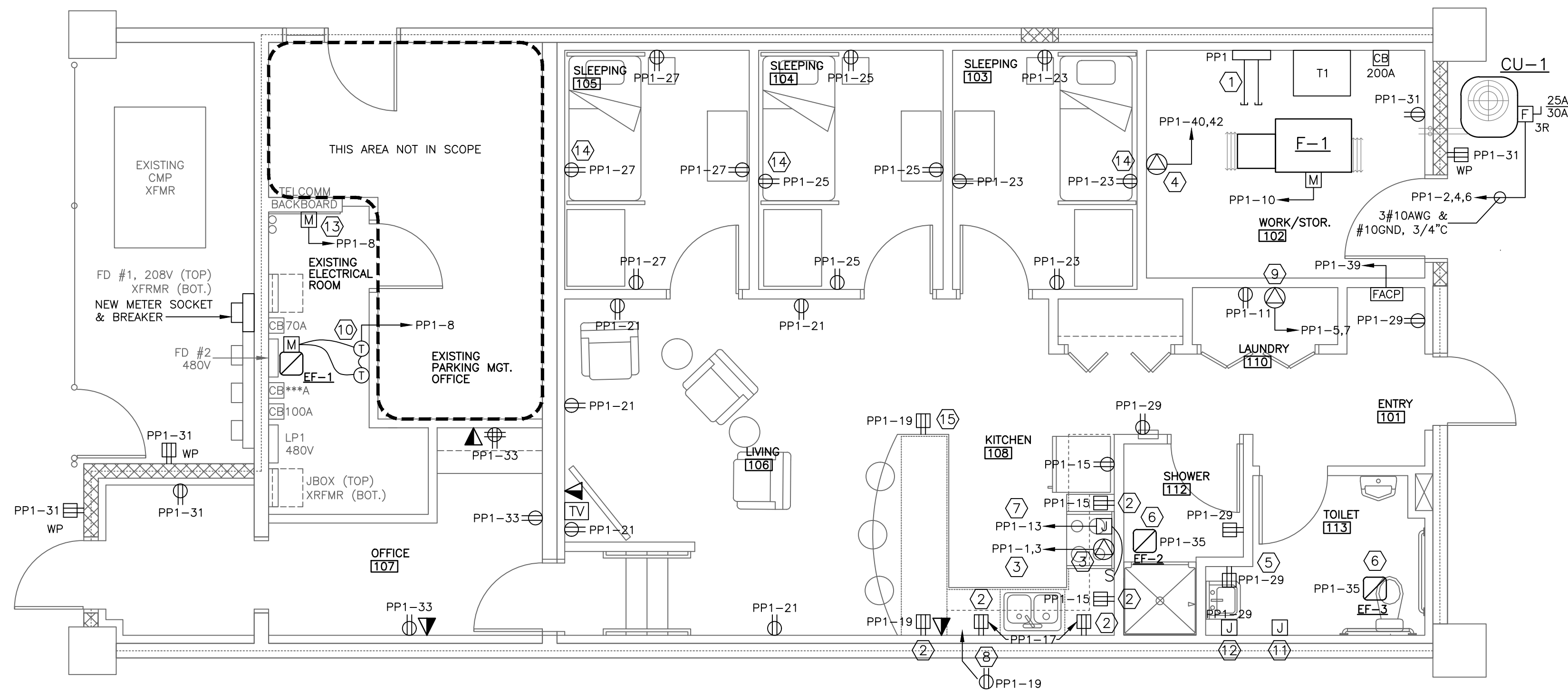


Winton Scott Architects
5 Milk Street
Portland, Maine 04101
207 774 4811
www.wintonsscott.com

Architecture / Planning
Preservation Architecture
Interior Architecture



1 ELECTRICAL POWER PLAN
SCALE: 1/4" = 1'-0"

DIRECTORY	KVA LOAD			CCT #	BKR AMPS	PHASE	BKR AMPS	CCT #	KVA LOAD			DIRECTORY	
	A	B	C						A	B	C		
RANGE	4.8			1	50	A	25	2	2.1			CU-1	
		4.8		3		B		4		2.1			
DRYER			4.2	5	40	C	20	8	0.2		2.1	EF-1, MOTORIZED DAMPER	
				7		A						SPARE	
DISHWASHER		1.2		9	20	B	20	10		*		SPARE	
WASHING MACHINE			1.0	11	20	C	20	12			1.6	FURNACE F-1	
RANGE HOOD	0.3			13	20	A	20	14	*			SPARE	
RCPTS - KITCHEN COUNTER		1.5		15	20	B	20	16		*		SPARE	
RCPTS - KITCHEN COUNTER			1.5	17	20	C	20	18			*	SPARE	
RCPTS - KITCHEN ISLAND	0.3			19	20	A	20	20	*			SPARE	
RCPTS - LIVING 106		0.8		21	20	B	20	22		*		SPARE	
RCPT/LTS - SLEEPING 103			0.9	23	20	C	20	24		*		SPARE	
RCPT/LTS - SLEEPING 104			0.9	25	20	A	20	26	*			SPARE	
RCPT/LTS - SLEEPING 105			0.9	27	20	B	20	28	*			SPARE	
RCPTS - BATH, SHOWER, CORR			0.9	29	20	C	20	30		*		SPARE	
RCPTS - STORAGE, VEST, EXT	0.9			31	20	A		32				SPACE	
RCPTS - OFFICE 107		0.8		33	20	B		34				SPACE	
LTS - 101, 102, 108, 110-113			0.3	35	20	C		36				SPACE	
LTS - LIV. 105, OFFICE 106	0.3			37	20	A		38				SPACE	
FACP		0.2		39	20	B	20	40		1.0		I.T. RECEPTACLE	
HAND DRYER - BATHROOM			1.0	41	20	C		42			1.0		
SUBTOTAL	11.7	10.2	9.8						2.3	3.1	4.7	SUBTOTAL	
VOLTAGE: 208Y/120V PHASE: 3 POLES: 4				TOTAL KVA A-PHASE				14.0				PANEL	PP1
MAIN BREAKER: 200A BUS AMPS: 200A				TOTAL KVA B-PHASE				13.3					
MOUNTING: SURFACE				TOTAL KVA C-PHASE				14.5				LOCATION	STORAGE 102
SHORT CIRCUIT RATING: 10KAIC				TOTAL KVA				41.8					

NOTES: ALL BREAKERS SERVING 20A, LIGHTING AND NON-GFI RECEPTACLE CIRCUITS IN FIREBOAT CREW QUARTERS SHALL BE ARC-FAULT TYPE.
NEW SQUARE D TYPE NOOD PANELBOARD.

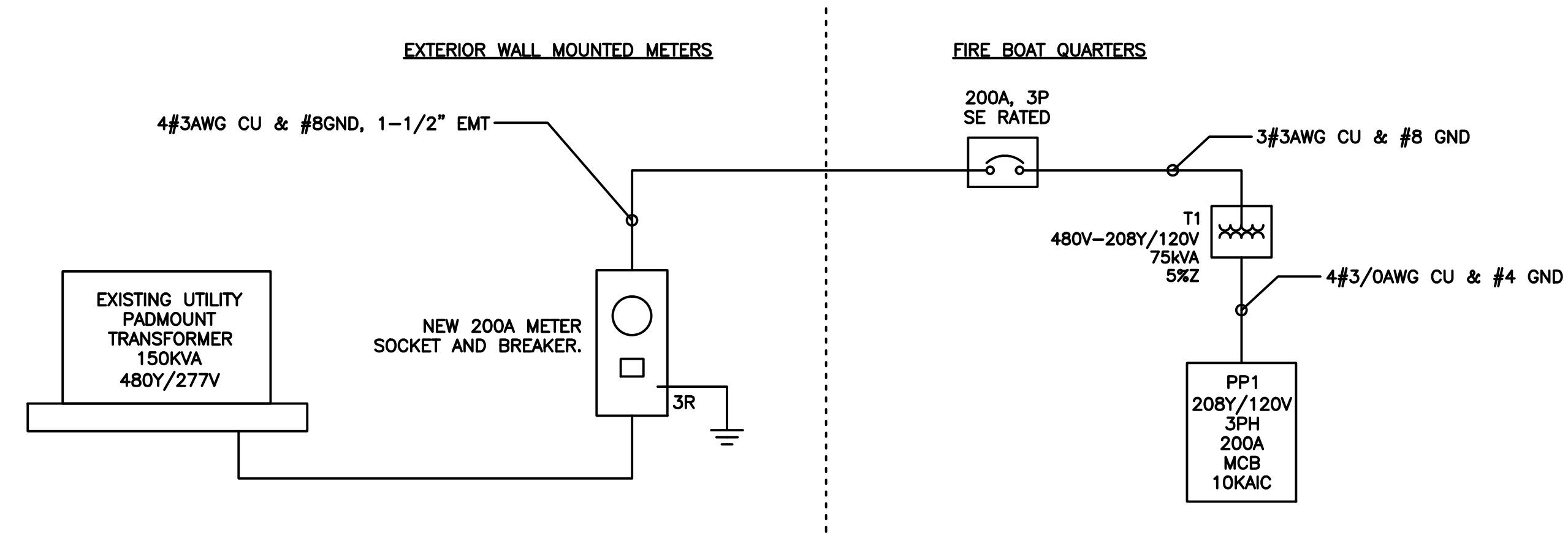
2 ELECTRICAL PANEL SCHEDULE
SCALE: N.T.S.

NOTES:

- SEE DRAWING E100 FOR GENERAL NOTES AND LEGEND.
- FOR VOICE, DATA AND CATV FURNISH 2 CAT6 CABLES FROM EACH JACK BACK TO SERVER EQUIPMENT (LOCATION TO BE COORDINATED IN FIELD), WITH ENOUGH SLACK TO REACH THE FLOOR. TERMINATE JACK END. OWNER TO COMPLETE CONNECTIONS AT THE SERVER END OF THE CABLE.

KEYED NOTES:

- FURNISH (2) - 3" CONDUITS FROM PANEL PP1 IN WORK/STOR RM 102 OUT TO EXISTING FIRE BOAT JUNCTION BOX LOCATED UNDER THE WHARF. CONDUITS SHALL BE SCHEDULE 80 PVC WHERE NOT ACCESSIBLE AND UNDER WHARF AND GALVANIZED RIGID STEEL IN ACCESSIBLE. FURNISH AN ADDITIONAL RUN OF (2) - 2" CONDUITS FROM THE WORK/STOR RM 102 TO THE EXISTING FIRE BOAT COMMUNICATIONS JUNCTION BOX FOLLOWING THE SAME ROUTE AND CONSTRUCTION TYPE. WIRING TO BE FURNISHED IN THE FUTURE BY OTHERS AND IS NOT INCLUDED IN THIS SCOPE OF WORK.
- MOUNT 6" ABOVE COUNTERTOP. COORDINATE WITH CASEWORK.
- ELECTRIC RANGE. COORDINATE RECEPTACLE TYPE WITH EQUIPMENT FURNISHED. WIRING TO BE 2#8AWG & #10GND.
- 208V, 20A DEDICATED SERVER EQUIPMENT RECEPTACLES. COORDINATE SIZE, NUMBER OF RECEPTACLES, AND FINAL LOCATION WITH OWNER. FURNISH AND INSTALL RECEPTACLES, BREAKERS, AND CORRESPONDING WIRING, CONDUIT AS REQUIRED.
- MOUNT RECEPTACLE 48" AFF.
- BATHROOM FAN. CONTROL FROM LIGHT SWITCH.
- JUNCTION BOX FOR RANGE HOOD OPERATED BY SWITCH AS SHOWN. FINAL LOCATION OF SWITCH SHALL BE DETERMINED IN FIELD.
- DISHWASHER RECEPTACLE. COORDINATE RECEPTACLE LOCATION WITH ARCHITECTURAL KITCHEN ELEVATION DETAILS.
- DRYER RECEPTACLE, WIRING TO BE 2#8AWG & #10GND.
- EXHAUST FAN WITH LINE VOLTAGE THERMOSTATS. FURNISHED BY MECHANICAL, INSTALLED BY ELECTRICAL. SEE MECHANICAL PLAN FOR EXACT LOCATION IN MECHANICAL ROOM.
- JUNCTION BOX FOR HAND DRYER.
- JUNCTION BOX FOR AUTOMATIC SOAP DISPENSER.
- MOTORIZED DAMPER. PROVIDE 115V.
- MOUNT RECEPTACLE AT HEIGHT TO AVOID CONTACT WITH BED OR FURNISH WITH ATTACHMENT PLUG GUARD AS REQUIRED BY CODE.
- COORDINATE MOUNTING OF RECEPTACLE WITH COUNTERTOP PENINSULA. EITHER RECESS MOUNT IN CABINETRY OR FLUSH MOUNT IF NEEDED.



3 ELECTRICAL RISER DIAGRAM
SCALE: N.T.S.

Renovations To:

City of Portland
Fireboat Crew
Quarters

Main State Pier
Portland, Maine

CONSTRUCTION DOCUMENTS
October 22, 2012

ELECTRICAL PANEL
SCHEDULES, &
POWER PLAN
SCALE: 1/4" = 1'-0"

