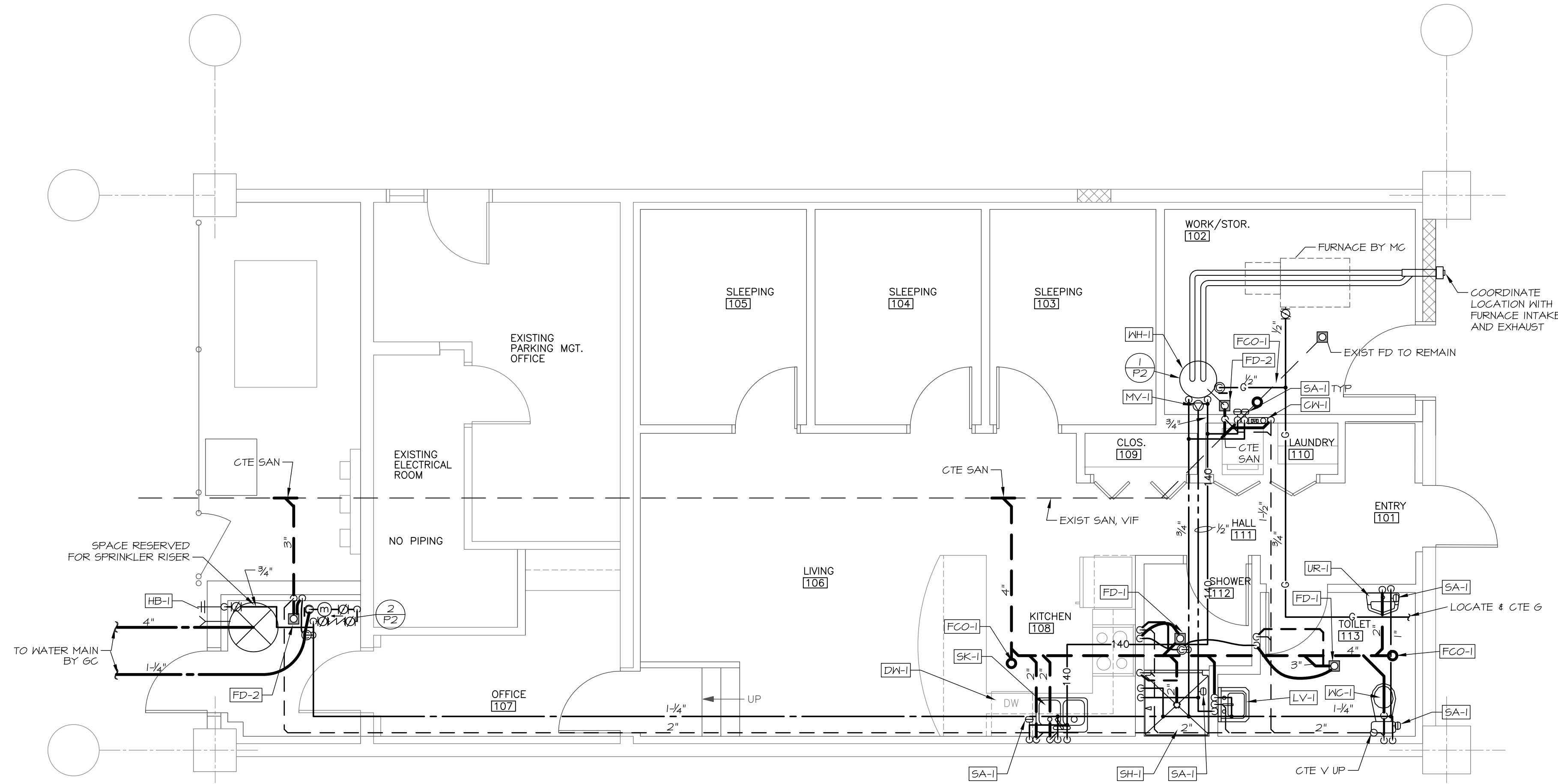
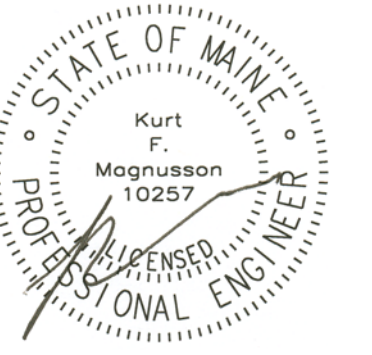


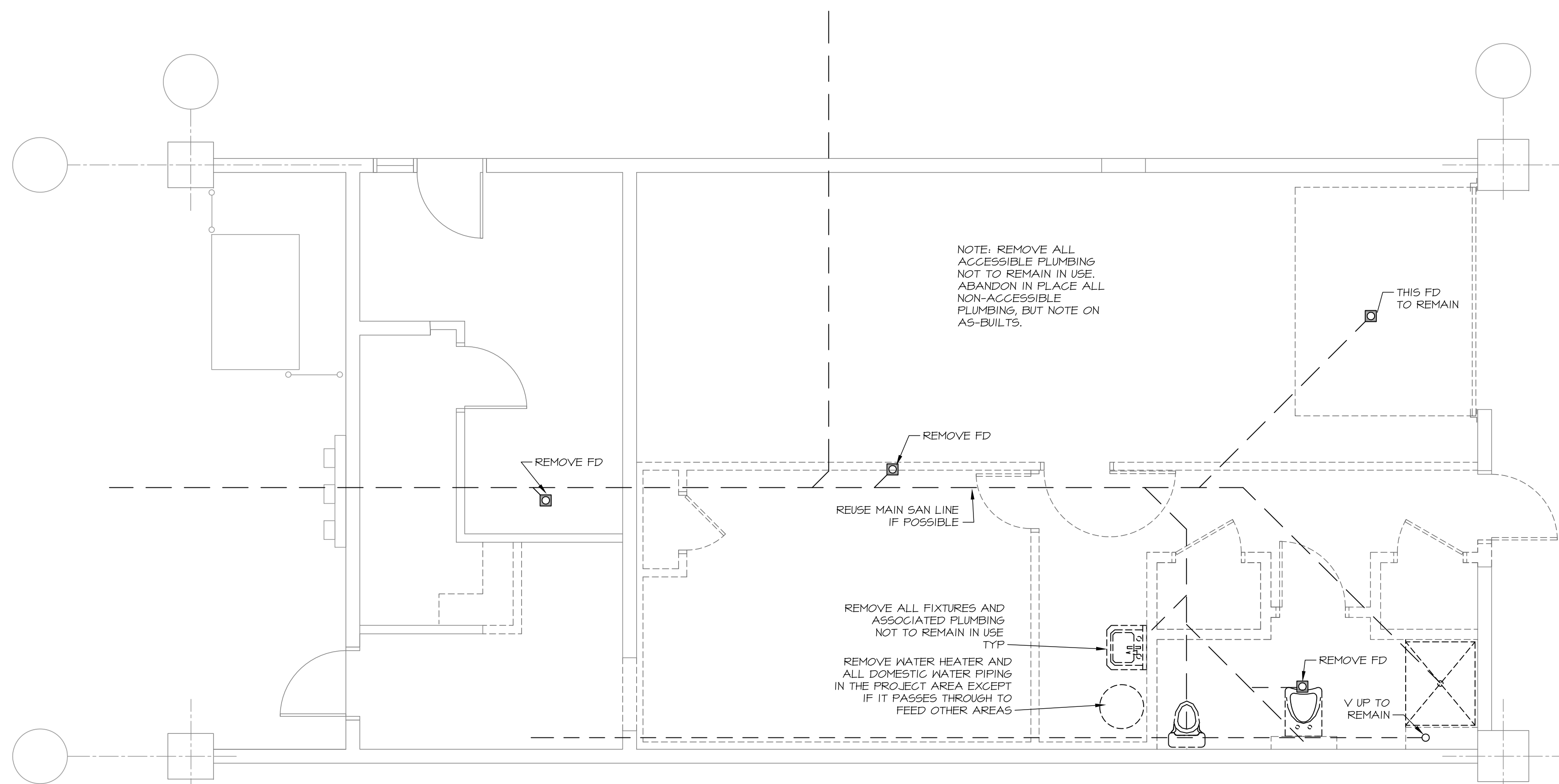


Winton Scott Architects  
 5 Milk Street  
 Portland, Maine 04101  
 207 774 4811  
 www.wintonscott.com

Architecture / Planning  
 Preservation Architecture  
 Interior Architecture



**1 NEW PLUMBING WORK**  
 SCALE: 1/4" = 1'-0"



**2 PLUMBING DEMOLITION**  
 SCALE: 1/4" = 1'-0"

City of Portland  
 Fire Boat Crew  
 Quarters

Maine State Pier  
 Portland, Maine

PROGRESS PRINT  
 October 5, 2012

Plumbing  
 New Work and  
 Demolition Plans

Scale: 1/4" = 1'-0"

**MECHANICAL SYSTEMS ENGINEERS**  
 ROYAL RIVER CENTER, UNIT #10  
 10 FOREST FALLS DRIVE  
 YARMOUTH, MAINE 04096  
 FACEBOOK: MECHANICAL SYSTEMS ENGINEERS  
 207-846-1441

P1



© COPYRIGHT 2012