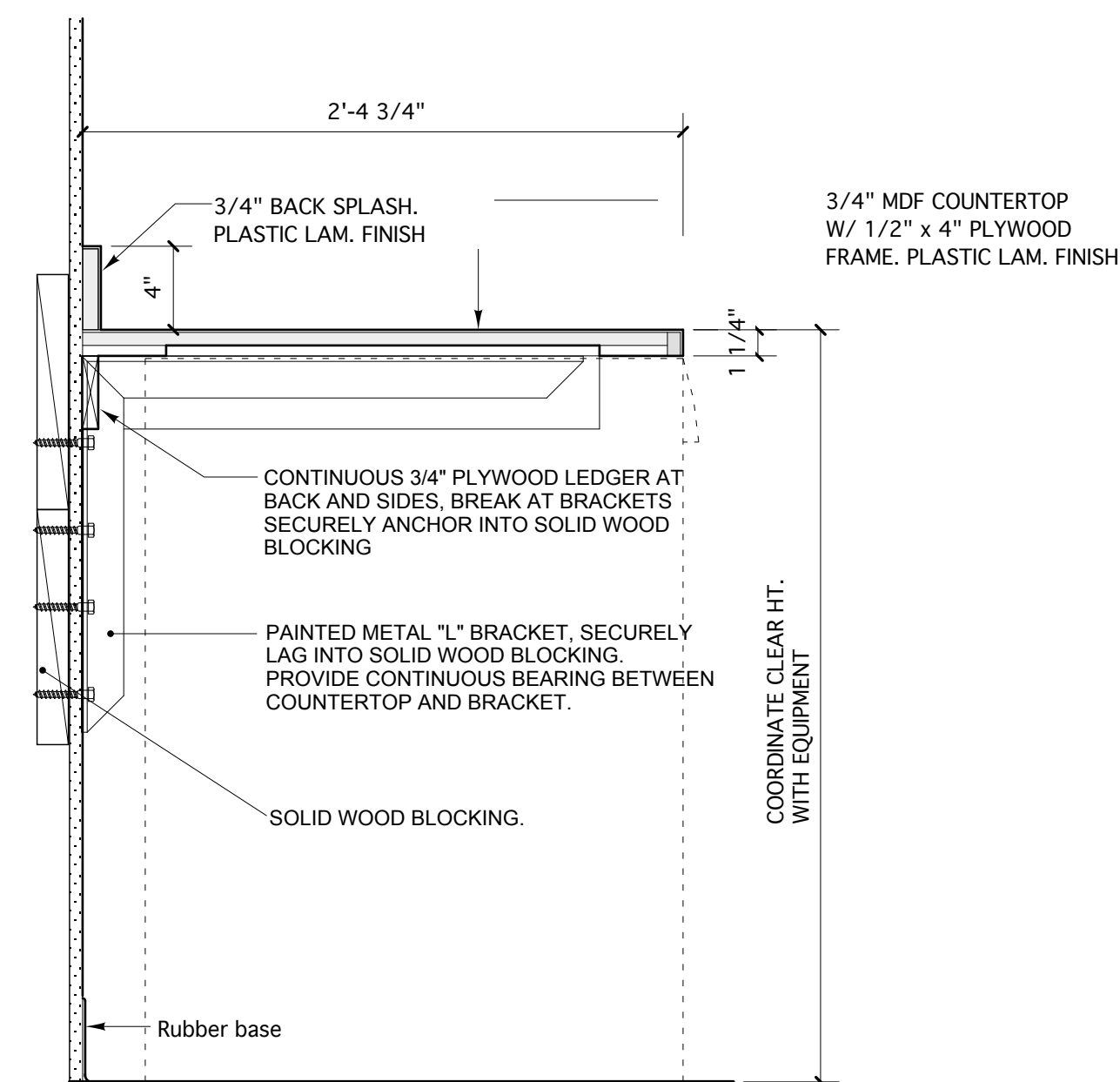
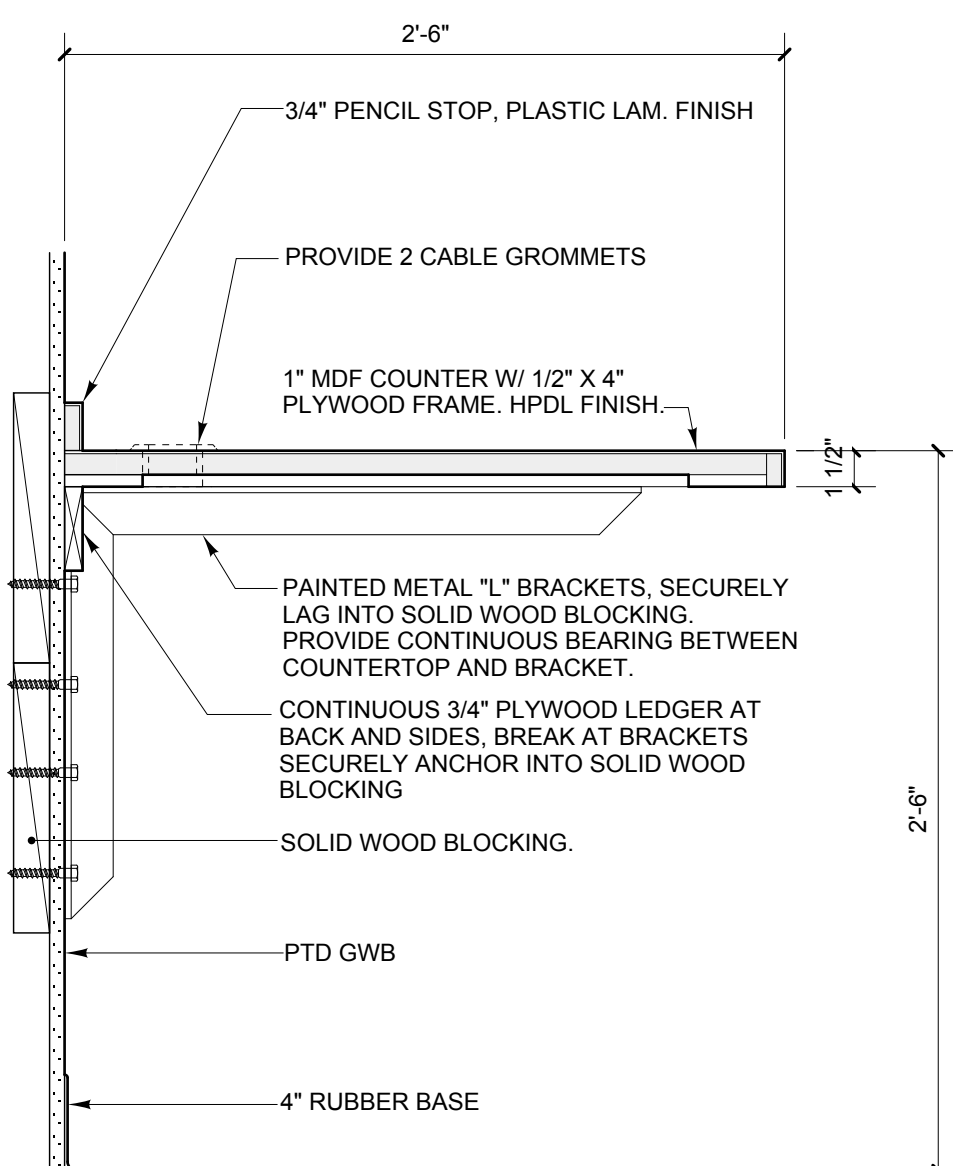


C ADJUSTABLE SHELVING DETAIL
SCALE: 3" = 1'-0"



B SECTION DETAIL AT LAUNDRY COUNTER
SCALE: 3" = 1'-0"

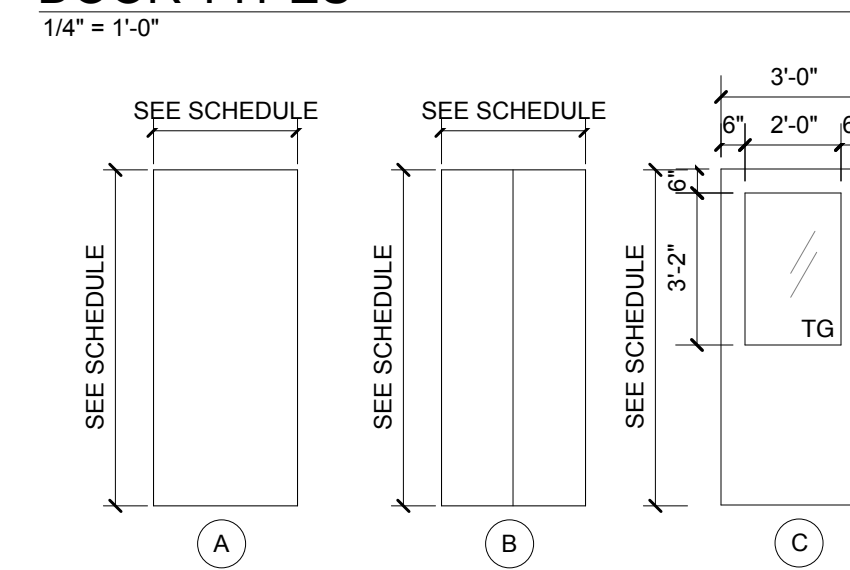


A SECTION DETAIL AT OFFICE COUNTER
SCALE: 3" = 1'-0"

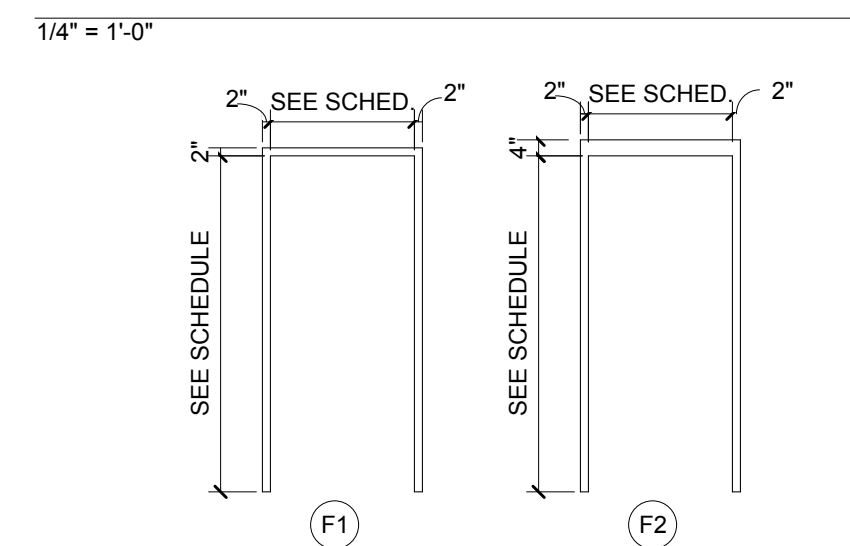
ABBREVIATIONS

SCWD	Solid Core Wood Door
C.F.F.	Clear Factory Finish
F.F.	Factory Finish
HM	Hollow Metal
GHM	Galvanized Hollow Metal
Ptd	Painted
HW	Hardware Set
TG	Tempered Glass
FG	Fire Glass
AL	Aluminum Storefront
EX	Existing

DOOR TYPES

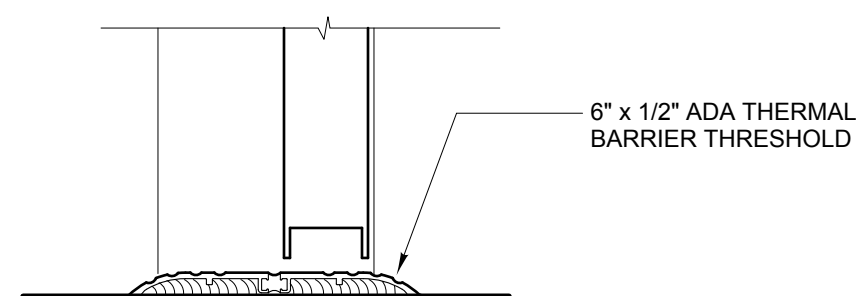


DOOR FRAME TYPES



DOOR AND FRAME NOTES

- 1 - GALVANIZED PAINTED HOLLOW METAL DOOR WITH INSULATION CORE THRESHOLD AND WEATHERSTRIPPING.
- 2 - PROVIDE COAT HOOK MODEL #B-682 BY BOBRICK MOUNTED ON BATH ROOM SIDE OF THE DOOR AT MANUFACTURER'S RECOMMENDED HEIGHT FOR ADA COMPLIANCE.
- 3 - PROVIDE HASP AND PADLOCK AT FENCE GATE
- 4 - GALVANIZED PAINTED HOLLOW METAL DOOR WITH INSULATION CORE THRESHOLD, WEATHERSTRIPPING, AND SWEEP. NEW DOOR IN EXISTING FRAME.



THRESHOLD DETAIL T-1

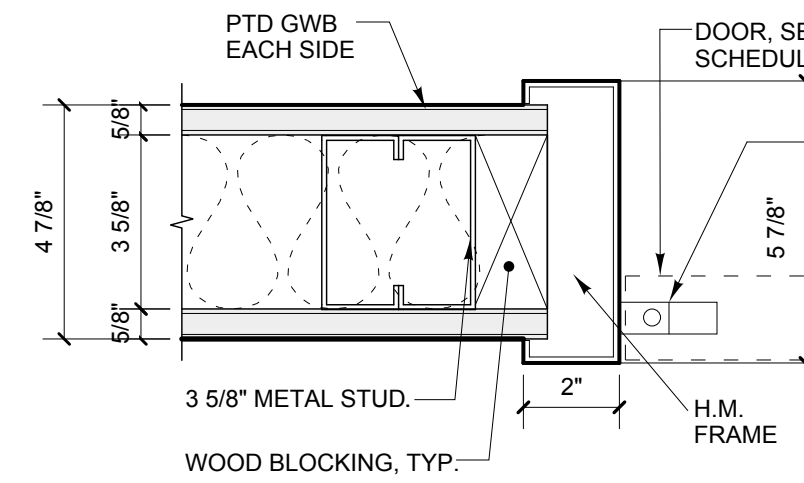
FINISH SCHEDULE

Room Name	Floor	Base	Walls	Remarks
Entry '01	VCT	4" rubber	Ptd GWB	
Workshop 102	VCT	4" rubber	Ptd GWB	
Sleeping Room 103	VCT	4" rubber	Ptd GWB	
Sleeping Room 104	VCT	4" rubber	Ptd GWB	
Sleeping Room 105	VCT	4" rubber	Ptd GWB	
Living Room 106	VCT	4" rubber	Ptd GWB	
Office 107	VCT	4" rubber	Ptd GWB	
Kitchen 108	VCT	4" rubber	Ptd GWB	
Closet 109	VCT	4" rubber	Ptd GWB	
Laundry 110	VCT	4" rubber	Ptd GWB	
Hall 111	VCT	4" rubber	Ptd GWB	
Shower Room 112	VCT	4" rubber	Ptd GWB	
Toilet Room 113	VCT	4" rubber	Ptd GWB	

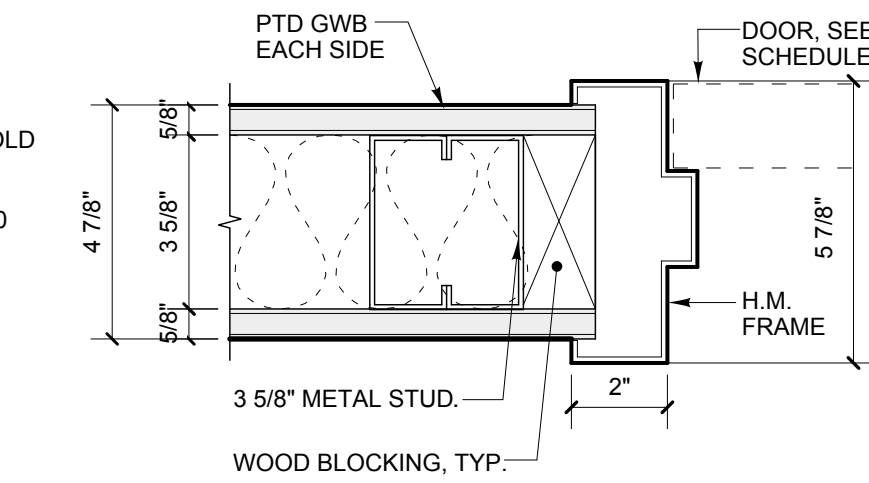
ALTERNATE #1: DELETE VCT AND VINYL BASE. ADD THEREFORE HEAT WELDED SHEET VINYL W/ 4" H INTEGRAL COVED BASE AND EXTRUDED ALUMINUM CAP MOLDING.

DOOR & FRAME SCHEDULE

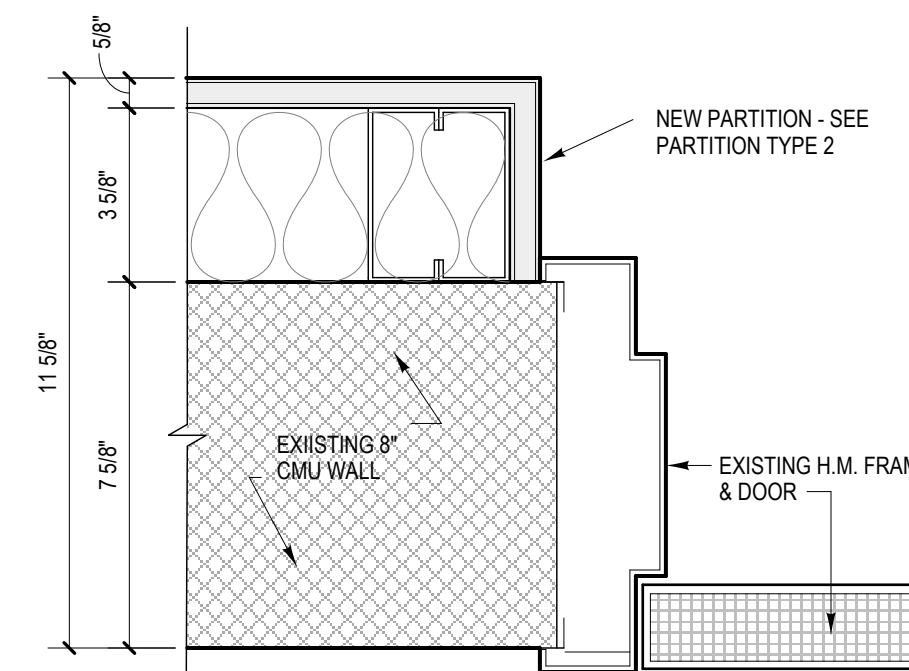
Door No.	Size (W x H)	Thickness	Door			Frame			Details				Label	Remarks
			Material	Finish	Type	Material	Finish	Type	Head	Jamb	Thrsld	Hardware		
FIRST FLOOR														
101	3'-0" X 7'-0"	1 3/4"	GALV. HM	CFF	A	EXIST.	EXIST.	EXIST.	H3	J3	T1	HW4	90 Min.	See note 4
102	3'-0" X 6'-8"	1 3/4"	GALV. HM	CFF	A	HM	Ptd	F1	H2	J2	T1	HW4	90 Min.	See note 1
103	3'-0" X 6'-8"	1 3/4"	SCWD	CFF	A	HM	Ptd	F1	H1	J1	--	HW2	--	--
104	3'-0" X 6'-8"	1 3/4"	SCWD	CFF	A	HM	Ptd	F1	H1	J1	--	HW2	--	--
105	3'-0" X 6'-8"	1 3/4"	SCWD	CFF	A	HM	Ptd	F1	H1	J1	--	HW2	--	--
107	3'-0" X 7'-0"	1 3/4"	SCWD	CFF	C	HM	Ptd	F2	H3	J3	--	HW1	--	--
107.1	3'-0" X 7'-0"	1 3/4"	GALV. HM	CFF	A	HM	Ptd	F2	H2	J2	T1	HW4	90 Min.	See note 1
109	4'-6" X 6'-8"	1 3/4"	SCWD	CFF	B	HM	Ptd	F1	H4	J4	--	HW3	--	--
110	5'-0" X 6'-8"	1 3/4"	SCWD	CFF	B	HM	Ptd	F1	H4	J4	--	HW3	--	--
112	3'-0" X 6'-8"	1 3/4"	SCWD	CFF	A	HM	Ptd	F1	H1	J1	--	HW2	--	See note 2
113	3'-0" X 6'-8"	1 3/4"	SCWD	CFF	A	HM	Ptd	F1	H1	J1	--	HW2	--	See note 2
114	Fence Gate	--	--	--	--	--	--	--	--	--	--	--	--	See note 3



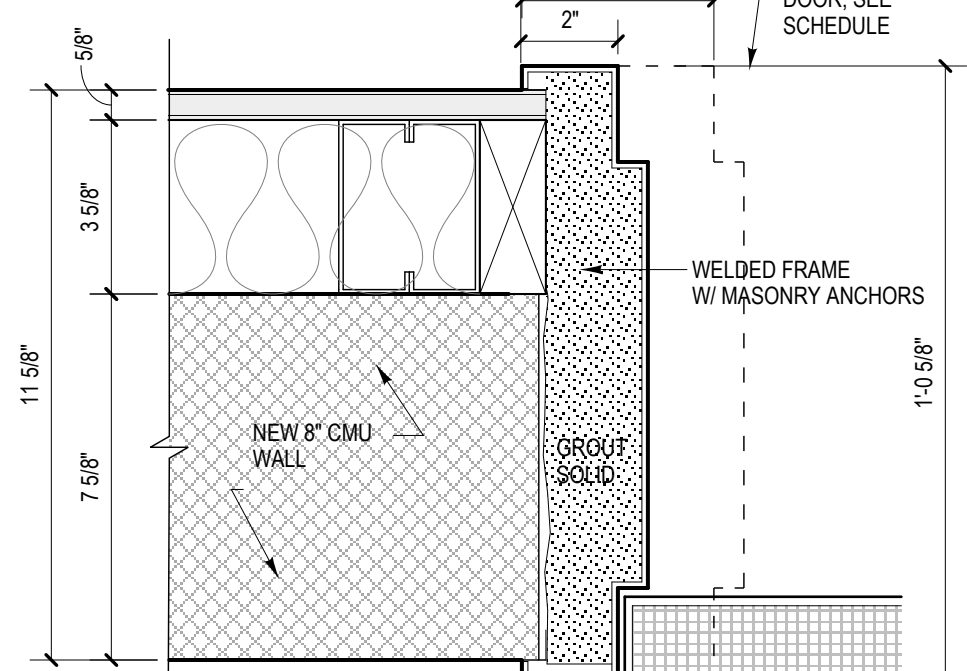
J4 H4 JAMB DETAIL / HEAD SIMILAR
SCALE: 3" = 1'-0"



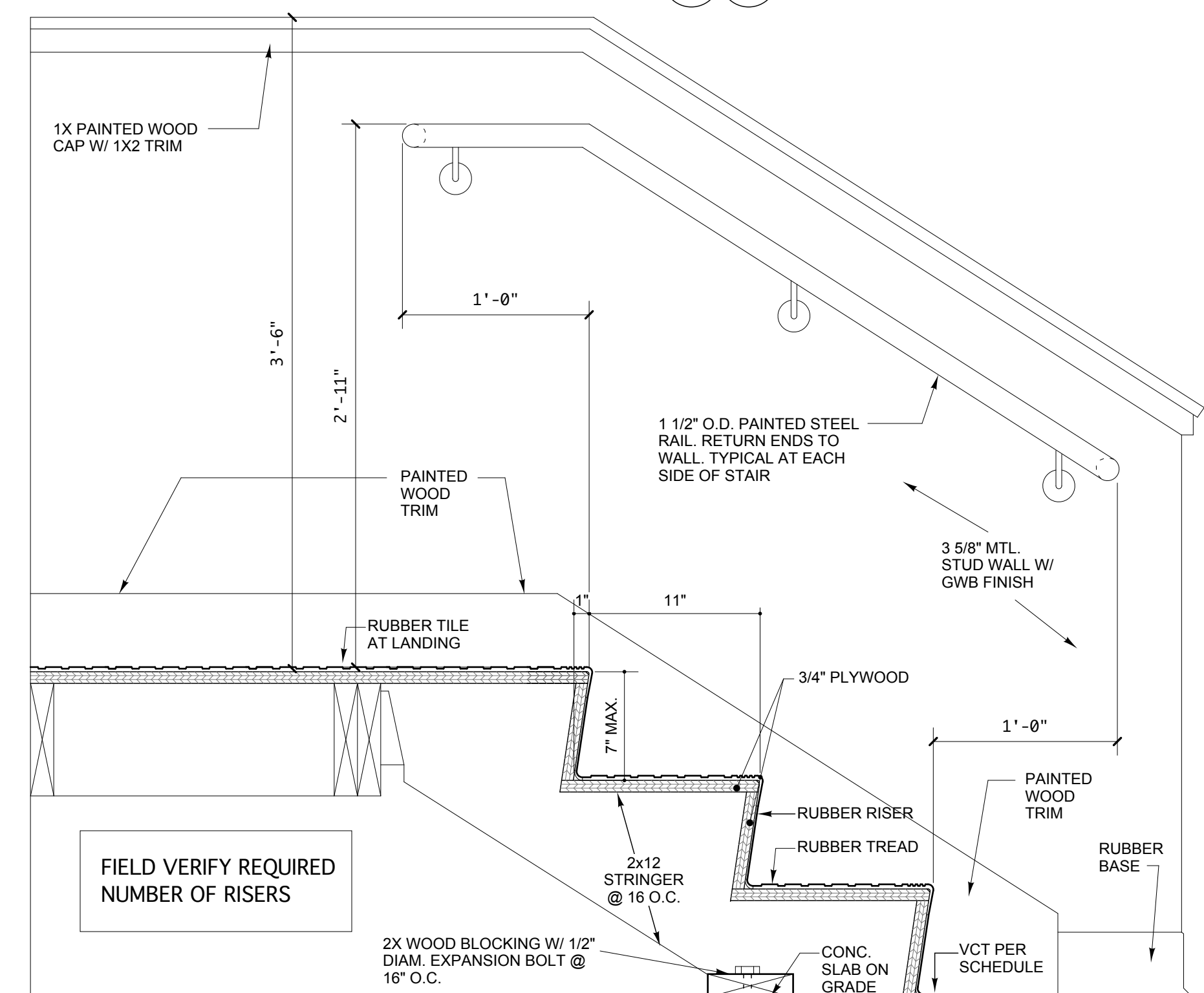
J1 H1 JAMB DETAIL / HEAD SIMILAR
SCALE: 3" = 1'-0"



J3 H3 JAMB DETAIL / HEAD SIMILAR
SCALE: 3" = 1'-0"



J2 H2 JAMB DETAIL / HEAD SIMILAR
SCALE: 3" = 1'-0"

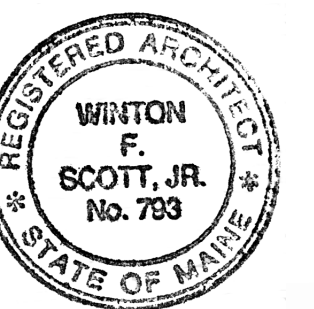


D SECTION DETAIL AT STAIR
SCALE: 1 1/2" = 1'-0"



Winton Scott Architects
5 Milk Street
Portland, Maine 04101
207 774 4811
www.wintonscott.com

Architecture / Planning
Preservation Architecture
Interior Architecture



Winton Scott

Renovations To:

City of Portland
Fireboat Crew
Quarters

Main State Pier
Portland, Maine

CONSTRUCTION DOCUMENTS
October 22, 2012

Millwork Details /
Schedules & Door
Details

Scale: As Noted