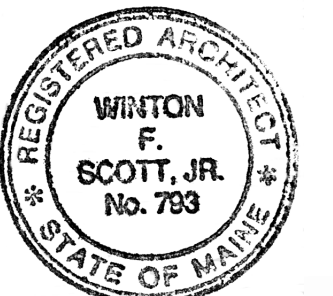


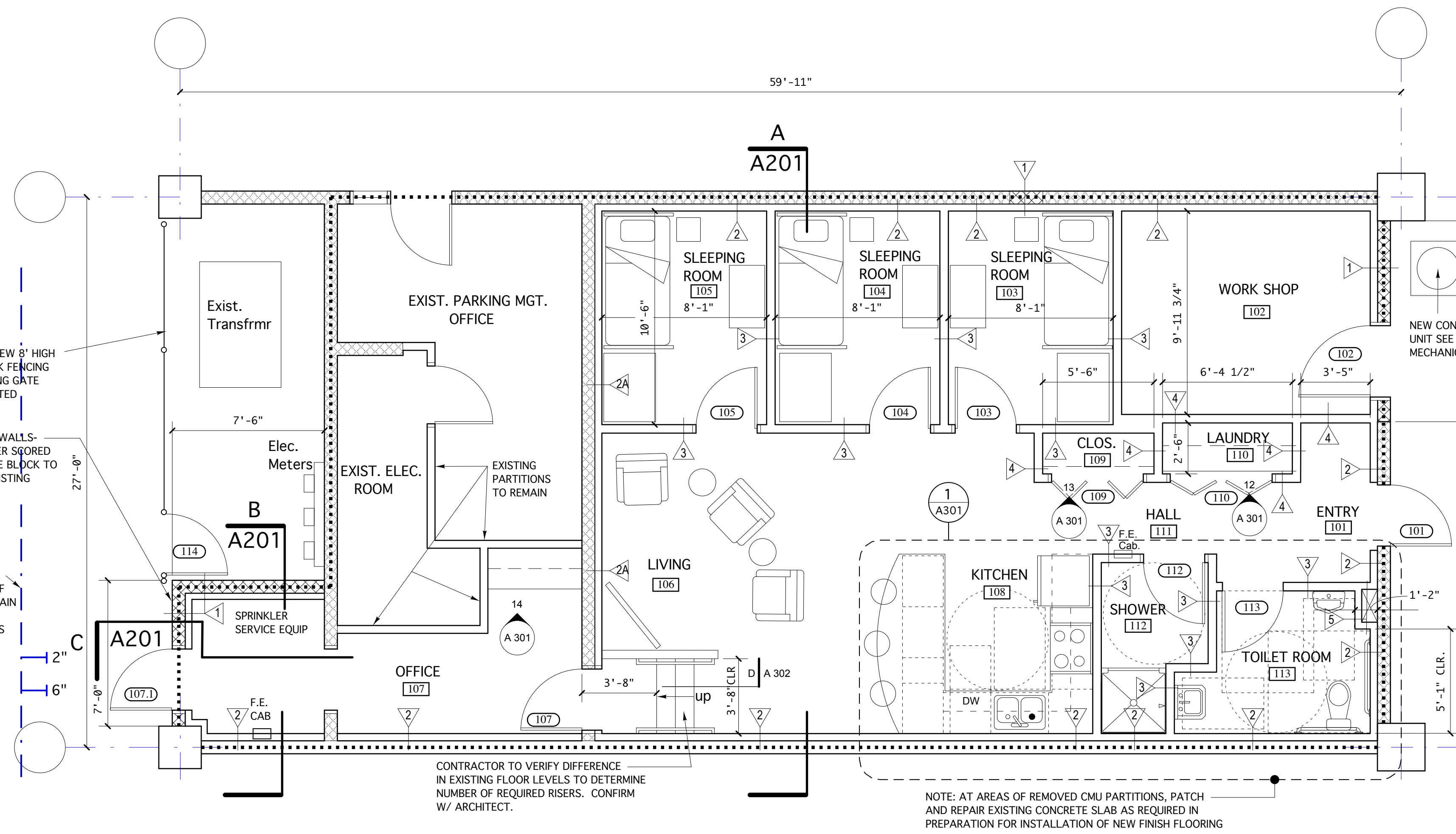


Winton Scott Architects  
5 Milk Street  
Portland, Maine 04101  
207 774 4811  
www.wintonscott.com

Architecture / Planning  
Preservation Architecture  
Interior Architecture



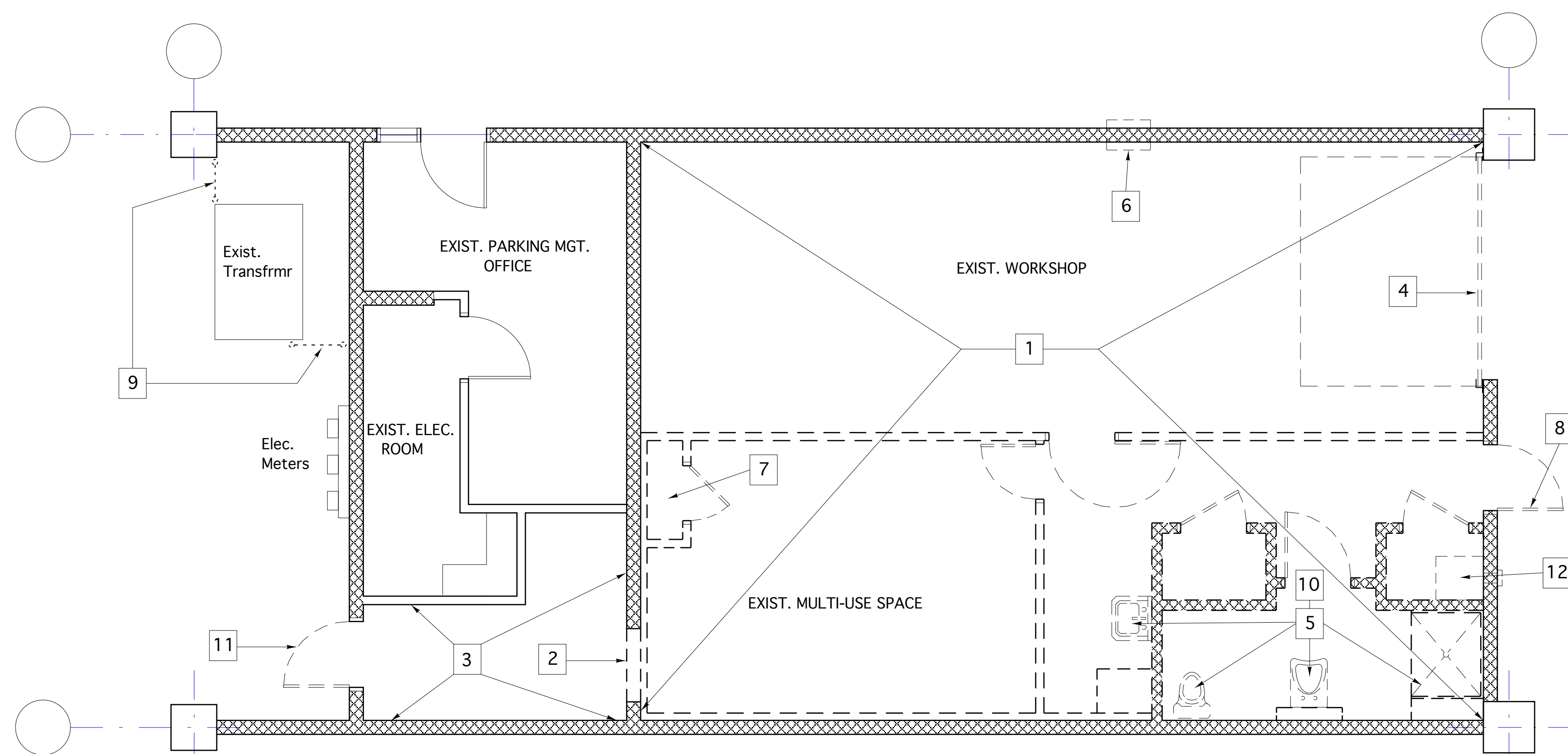
*Winton Scott*



**FLOOR PLAN**

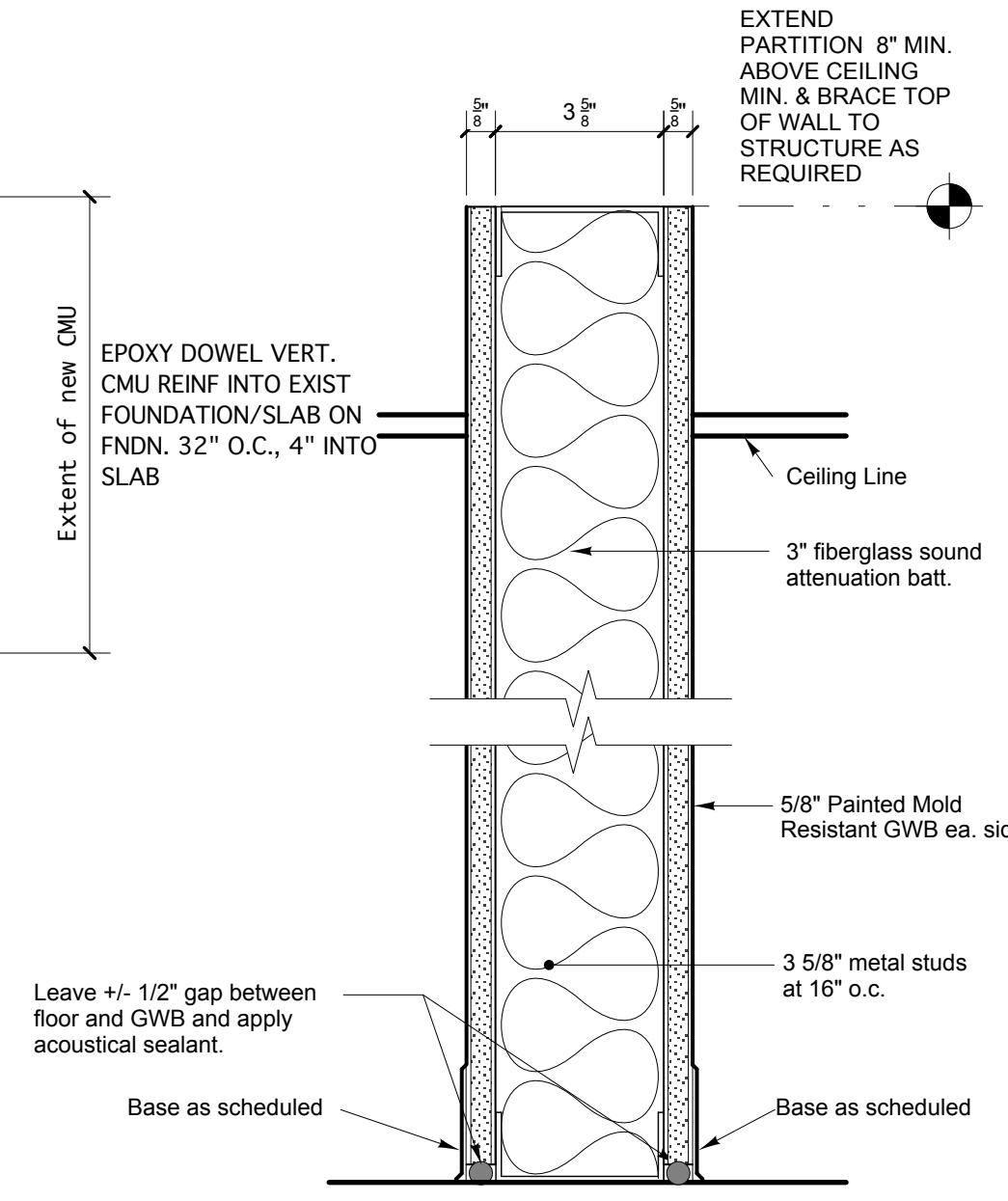
SCALE: 1/4" = 1'-0"

..... DESIGNATES RATED PARTITION

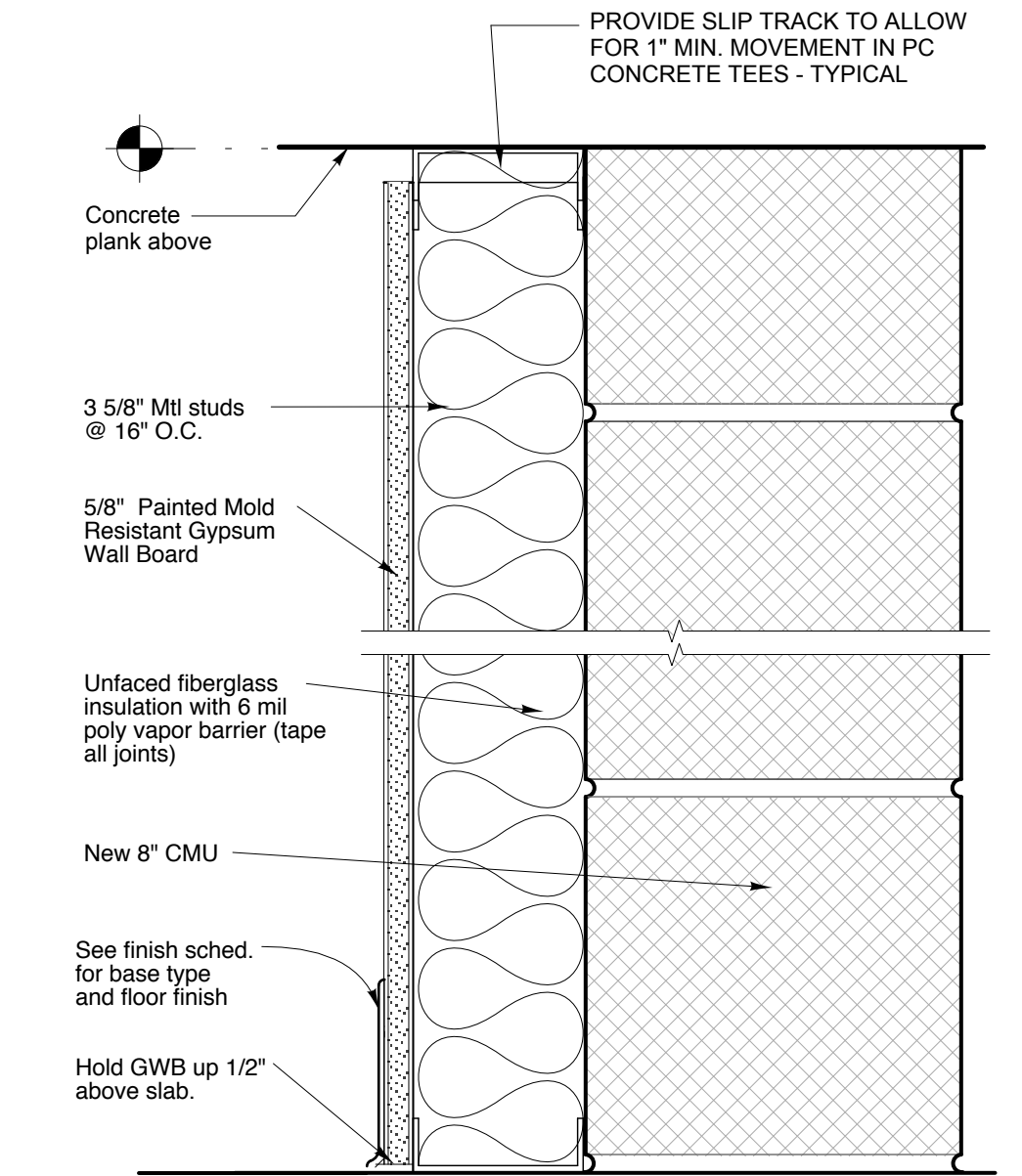


**DEMOLITION PLAN**

SCALE: 1/4" = 1'-0"



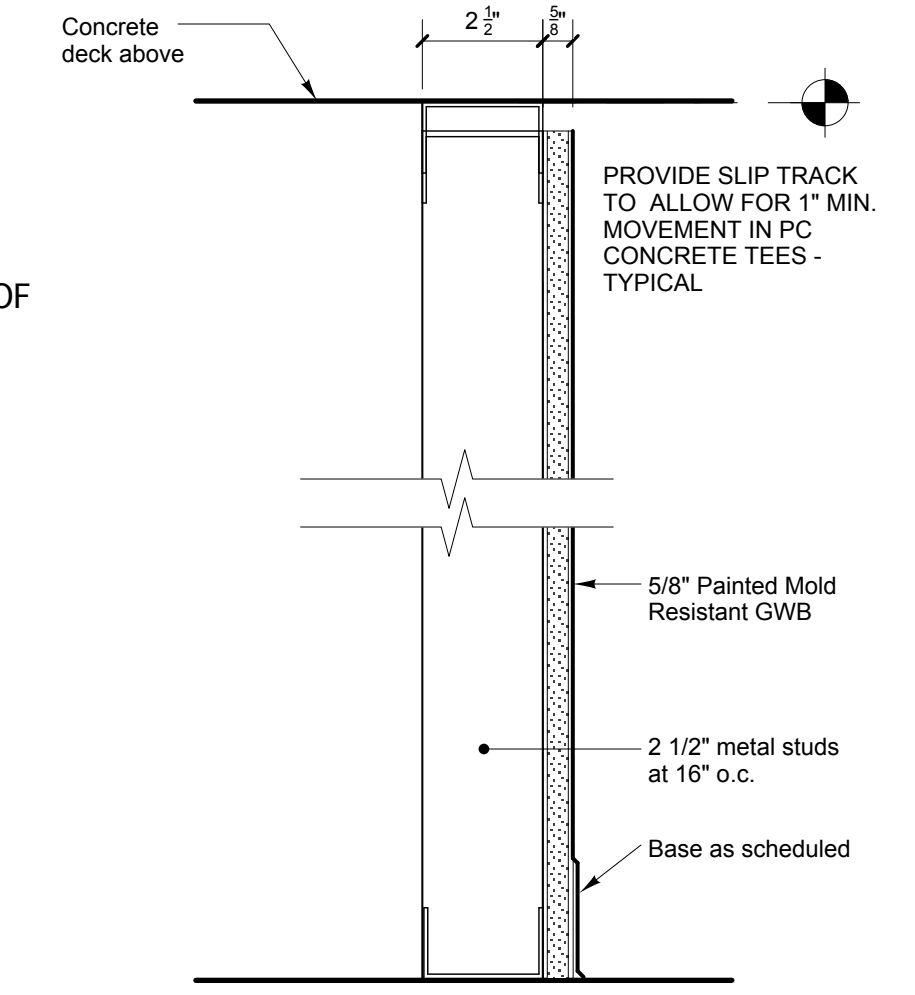
- 3 Typical Interior Partition As Shown.
- 4 SAME AS TYPE 3 EXCEPT NO ACOUSTIC BATTS As Shown.



- 1 New CMU Partition w/ GWB Finish - 2 HOUR RATED As Shown
- 2 SAME AS TYPE 1 EXCEPT CMU IS EXISTING
- 2A SAME AS TYPE 2 EXCEPT DELETE INSULATION

**DEMOLITION KEY NOTES**

- 1 REMOVE ALL WOOD STUD AND CMU PARTITIONS, FLOORING, CEILING GRID, TILE, INSULATION, WIRING, PIPING, FIN TUBE HEAT, LIGHTING COMPLETE BACK TO ENCLOSING CMU WALLS. REPAIR SLABS AT LOCATIONS OF REMOVED CMU TO PREPARE FOR INSTALLATION OF NEW FINISH FLOORING.
- 2 REMOVE PORTION OF CMU WALL IN PREPARATION FOR INSTALLATION OF NEW DOOR AND FRAME
- 3 REMOVE EXISTING FLOORING AND CEILING COMPLETE
- 4 REMOVE EXISTING OVERHEAD DOOR, RAILS, AND OVERHEAD TRACK COMPLETE.
- 5 REMOVE EXISTING PLUMBING FIXTURES AND ASSOCIATED PIPING. SEE MECHANICAL AND PLUMBING DRAWINGS FOR ADDITIONAL INFORMATION ABOUT REMOVALS.
- 6 REMOVE EXISTING EXHAUST FAN AND ASSOCIATED WIRING. SEE MECHANICAL DRAWINGS FOR ADDITIONAL INFORMATION.
- 7 SEE ELECTRICAL DRAWINGS FOR EXTENT OF REMOVALS RELOCATIONS AT ELECTRICAL CLOSET.
- 8 REMOVE DOOR. FRAME TO REMAIN.
- 9 REMOVE EXISTING CHAIN LINK FENCING AND PATCH POST HOLES IN PAVEMENT.
- 10 REMOVE EXISTING CERAMIC TILE FLOORING & PREP SLAB FOR NEW SCHEDULED FLOORING
- 11 REMOVE EXISTING DOOR. FRAME TO REMAIN.
- 12 REMOVE EXISTING BOILER AND FLUE



- 5 Typical Interior Partition As Shown

Renovations To:

City of Portland  
Fireboat Crew  
Quarters

Main State Pier  
Portland, Maine

CONSTRUCTION DOCUMENTS  
October 22, 2012

Floor Plan, Partition  
Types &  
Demolition Plan

Scale: As Noted

**A 101**