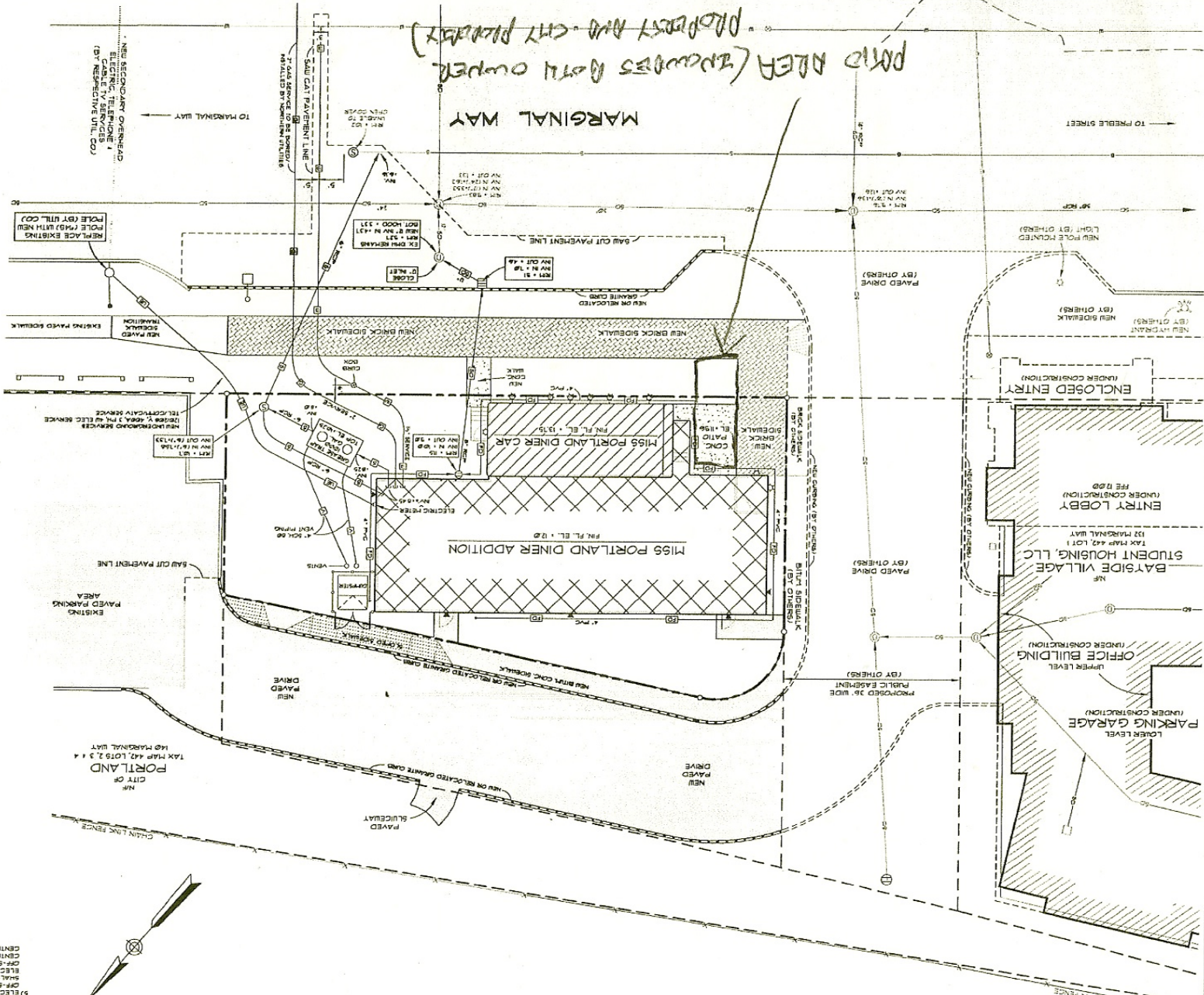


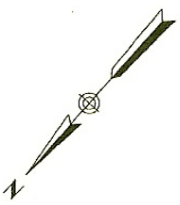
140 MARGINAL WAY

N/E
STATE OF
MAINE
INTERSTATE 295



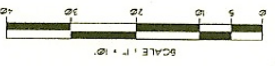
UTILITY NOTES

- 1) SEE SHEET 1 FOR SITE NOTES.
- 2) BARBERS FIRE HYDRANT IS 65 FT (SOUTHWEST) DOWN MARGINAL WAY N FRONT OF THE BAYSIDE VILLAGE MAIN ENTRANCE.
- 3) CONNECT ROOF DRAINS TO PERMITTER FOUNDATION DRAIN OUTFALL PIPING.
- 4) SITE CONTRACTOR SHALL BE RESPONSIBLE FOR RECEIVING AND INSTALLING ALL LIGHT POLE BUSES INCLUDING THE PUBLIC ROW AND TRENCHING FOR CONDUIT.
- 5) ELECTRICAL CONTRACTOR SHALL BE RESPONSIBLE FOR ALL CONDUIT FOR ON-SITE AND OFF-SITE ELECTRICAL SERVICE FOR POLE MOUNTED MANHOLE, ELECTRICAL CONTRACTOR SHALL BE RESPONSIBLE FOR ON-SITE POLE MOUNTED LIGHT POLES AND POLE ELECTRICAL SERVICE FOR POLE MOUNTED MANHOLE. ELECTRICAL CONTRACTOR SHALL BE RESPONSIBLE FOR ON-SITE POLE MOUNTED LIGHT POLES.
- 6) SITE CONTRACTOR SHALL BE RESPONSIBLE TO BE LEASED BY THE CITY OF PORTLAND FROM CENTRAL PLANE POWER. OFF-SITE POLE MOUNTED FIGURES TO BE INSTALLED BY CENTRAL PLANE POWER.



LEGEND

- 0 IRON ROD TO BE SET
- 1 BOUNDARY LINE (OTHER)
- 2 EXISTING SEWER LINE
- 3 EXISTING WATER LINE
- 4 EXISTING WATER LINE
- 5 EXISTING STORM DRAIN LINE
- 6 PROPOSED VENT PIPE
- 7 PROPOSED UNDERGROUND ELECTRICAL LINE
- 8 EXISTING SEWER MANHOLE
- 9 PROPOSED SEWER MANHOLE
- 10 EXISTING DRAINAGE MANHOLE
- 11 PROPOSED DRAINAGE MANHOLE
- 12 PROPOSED GAS LINE
- 13 PROPOSED SECONDARY ELECTRICAL LINE
- 14 PROPOSED FOUNDATION DRAIN LINE
- 15 NOW OR FORMERLY
- 16 EXISTING BUILDING
- 17 PROPOSED PAVEMENT
- 18 NEW POLE MOUNTED STREET LIGHT

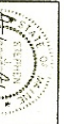


UTILITY PLAN
MISS PORTLAND AND DINER
MARGINAL WAY - PORTLAND, MAINE
PREPARED FOR
TOMMASI, LLC



SJR ENGINEERING, INC.
21 HATHOR ROAD
ANDOVER, MAINE 04330
(207) 677-8136 FAX 1 (207) 677-8136

NO.	DATE	DESCRIPTION
1	01-14-07	REVISIONS FOR ARCHITECT'S REVIEW
2	01-14-07	REVISIONS FOR ARCHITECT'S REVIEW
3	01-14-07	REVISIONS FOR ARCHITECT'S REVIEW
4	01-14-07	REVISIONS FOR ARCHITECT'S REVIEW



DATE DEC 2007
SCALE BY
PLANT 1" = 40'
SHEET 3