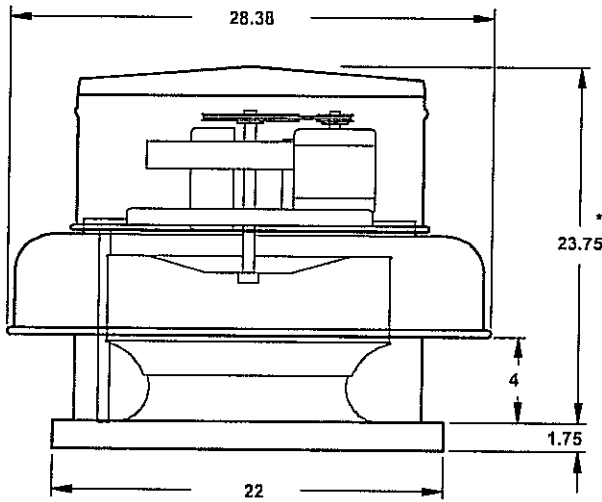


Fan

MARK: Exhaust A

GB

Belt Drive Centrifugal Roof Exhaust Fan



Tag: Exhaust A

CONSTRUCTION FEATURES

- Aluminum housing • Backward inclined aluminum wheel • Curb cap with prepunched mounting holes • Motor and drives isolated on shock mounts • Birdscreen • Ball bearing motors • Adjustable motor pulley • Adjustable motor plate • Fan shaft mounted in ball bearing pillow blocks • Bearings meet or exceed temperature rating of fan • Static resistant belts • Corrosion resistant fasteners

SELECTED OPTIONS & ACCESSORIES

- Switch - Nema-1, Toggle, Junction Box Mounted and Wired
- Curb GPI-22-G12
- Aluminum Rub Ring
- Premium Efficient Motor exceeds EPACK and NEMA 1210

* Maybe greater depending on motor.

NOTES: All dimensions shown are in units of inches
Fan weight is without accessories

DIMENSIONS

Approx. Fan Weight (lb)	Recommended Roof/Wall Opening (in)
85	18.5 x 18.5

PERFORMANCE (Elevation ft = 0, Airstream Temperature °F = 70)

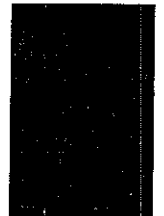
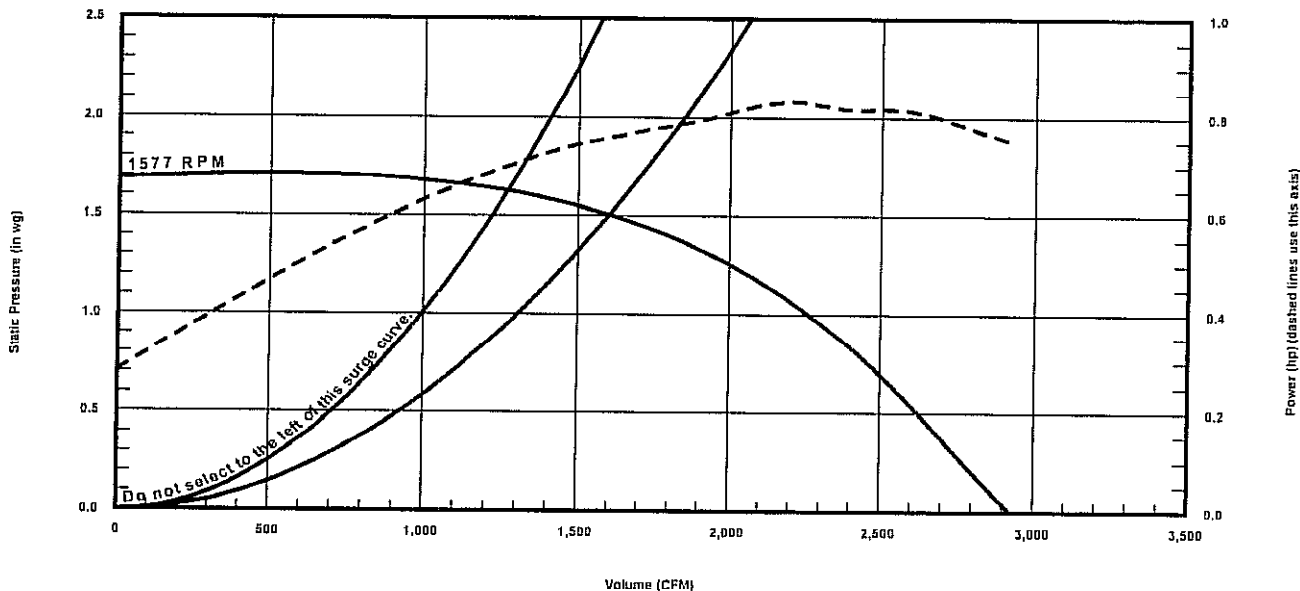
Qty	Model	Volume (CFM)	SP (in wg)	FRPM	Operating Power (hp)	Motor Information					
						Size (hp)	V/C/P	Encl:	Motor RPM:	Windings	FLA (A)
6	GB-141-10	1,600	1.5	1,577	0.76	1	460/60/3	ODP	1725	1	2.1

SOUND

Inlet Sound Power by Octave Band								Lwa	dBA	Sones
62.5	125	250	500	1000	2000	4000	8000			
61	73	91	74	74	68	60	51	83	72	18.2

FLA - Based on tables 150 or 148 of National Electrical Code 2002.

LwA - A weighted sound power level, based on ANSI S1.4.
dBA - A weighted sound pressure level, based on 11.5 dB attenuation per octave band at 5.0 ft. Sones calculated using AMCA 301 at 5.0 ft.

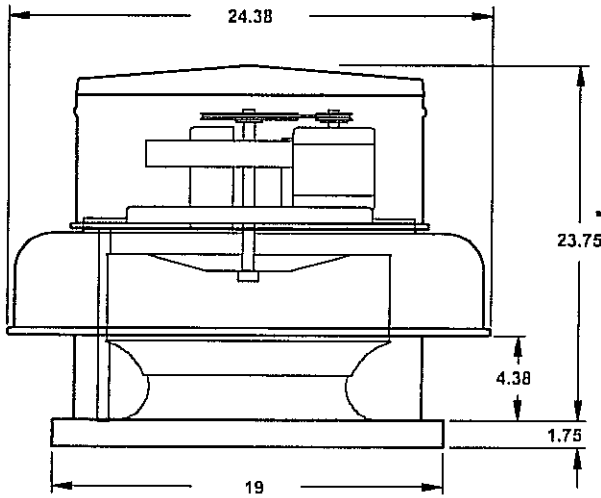


Fan

MARK: Exhaust C

GB

Belt Drive Centrifugal Roof Exhaust Fan



Tag: Exhaust C

CONSTRUCTION FEATURES

- Aluminum housing • Backward inclined aluminum wheel • Curb cap with prepunched mounting holes • Motor and drives isolated on shock mounts • Birdscreen • Ball bearing motors • Adjustable motor pulley • Adjustable motor plate • Fan shaft mounted in ball bearing pillow blocks • Bearings meet or exceed temperature rating of fan • Static resistant belts • Corrosion resistant fasteners

SELECTED OPTIONS & ACCESSORIES

- Switch - Nema-1, Toggle, Junction Box Mounted and Wired
- Curb GPI-19-G12
- Aluminum Rub Ring

* Maybe greater depending on motor.

NOTES: All dimensions shown are in units of inches
Fan weight is without accessories

DIMENSIONS

Approx. Fan Weight (lb)	Recommended Roof/Wall Opening (in)
50	14.5 x 14.5

PERFORMANCE (Elevation ft = 0, Airstream Temperature °F = 70)

Qty	Model	Volume (CFM)	SP (in wg)	FRPM	Operating Power (hp)	Motor Information					
						Size (hp)	V/C/P	Encl:	Motor RPM:	Windings	FLA (A)
1	GB-101HP-5	700	1.5	2,384	0.43	1/2	115/60/1	ODP	1725	1	9.8

SOUND

Inlet Sound Power by Octave Band								Lwa	dBA	Sones
62.5	125	250	500	1000	2000	4000	8000			
81	83	75	74	69	65	65	62	76	65	14.4

FLA - Based on tables 150 or 148 of National Electrical Code 2002.

Lwa - A weighted sound power level, based on ANSI S1.4.
dBA - A weighted sound pressure level, based on 11.5 dB attenuation per octave band at 5.0 ft. Sones calculated using AMCA 301 at 5.0 ft.

