

Prepared For:
SOUTHERN MAINE STUDENT HOUSING, LLC
 247 Commercial Street
 Rockport, Maine 04856
 Tel: (207) 250-4007

Prepared By:
MITCHELL & ASSOCIATES
 The Staples School
 70 Center Street
 Portland, Maine 04101
 Tel: (207) 774-4427

G.P. Consulting Engineers, Inc.
 15 Shaker Road
 Portland, ME 04103 FAX: 207-627-4390
 15 Shaker Road FAX: 207-627-4390
 15 Shaker Road FAX: 207-627-4390



BAYSIDE VILLAGE A STUDENT HOUSING COMPLEX

132 Marginal Way Portland, Maine

Date: JUNE 15, 2007

Issued For: CONSTRUCTION

Revisions:
 July 17, 2007 - Construction Drawings
 September 10, 2007 - Added Stamp, Detail and Added Details.

Reproduction or reuse of this document without the written consent of Mitchell & Associates is prohibited.

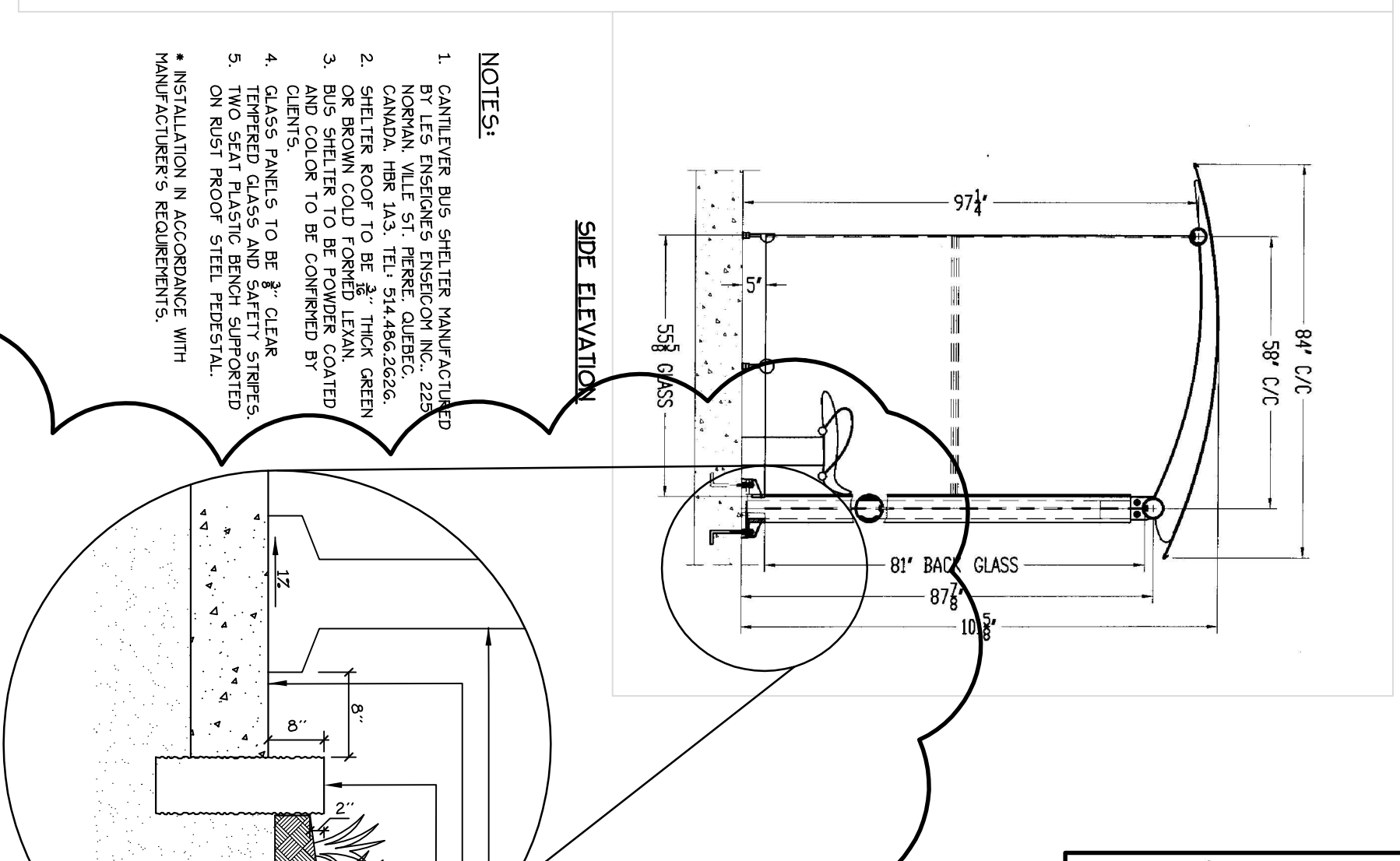
Title: **SITE DETAILS**

Scale:

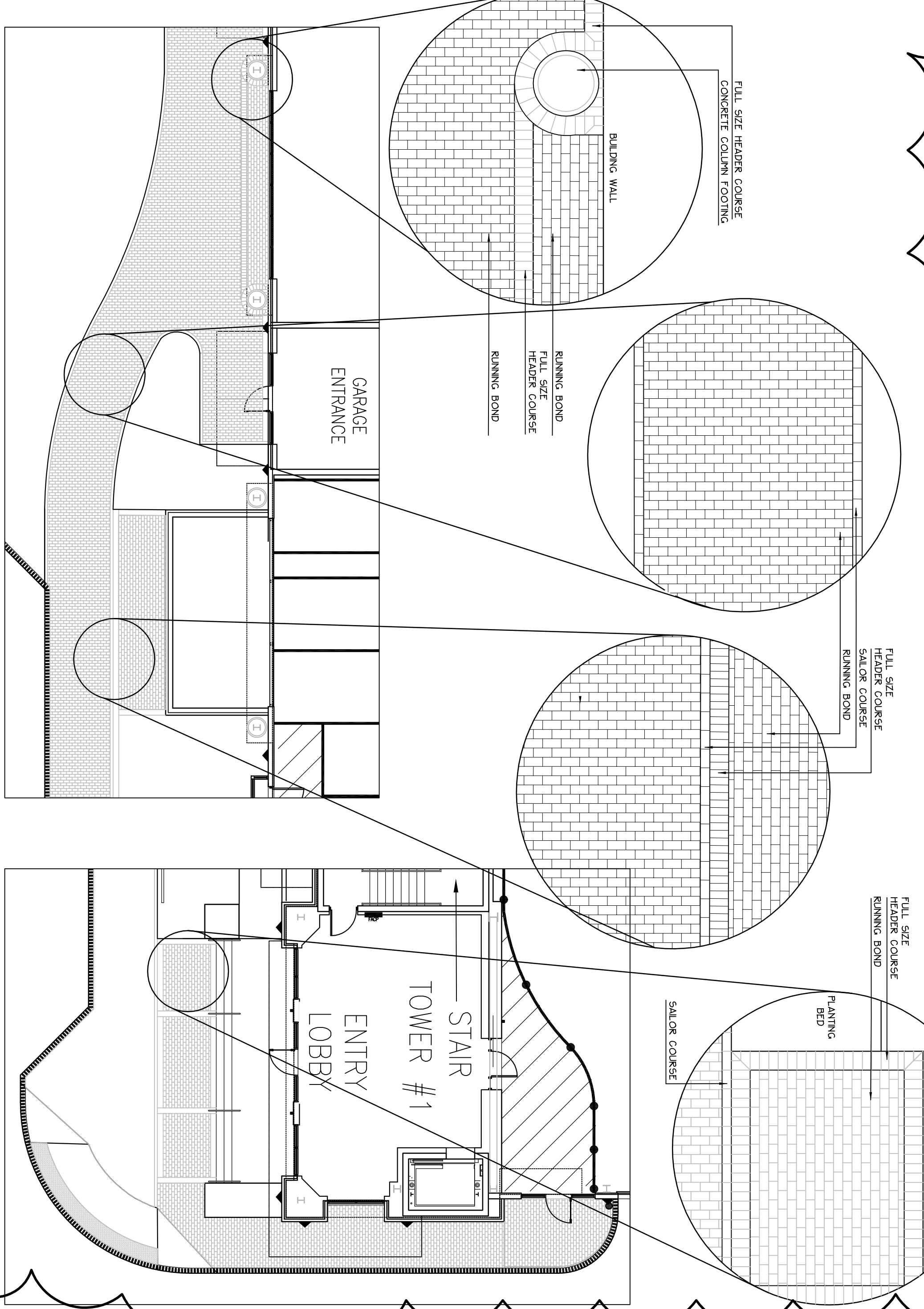
North:

Sheet No.: **8**

REVISED
 9/14/07

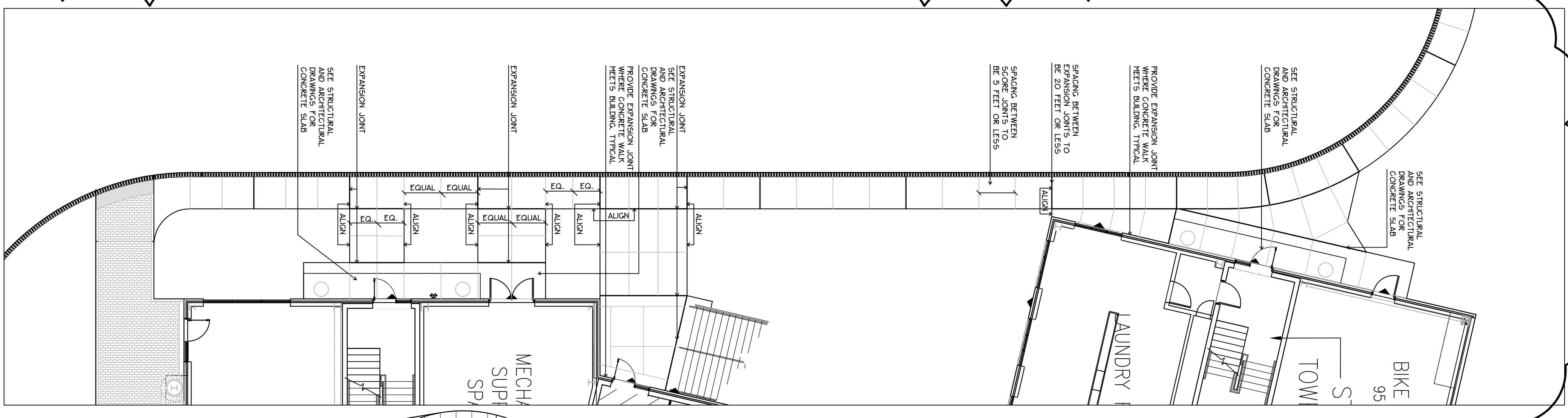


3 CANTILEVER BUS SHELTER
 NOT TO SCALE

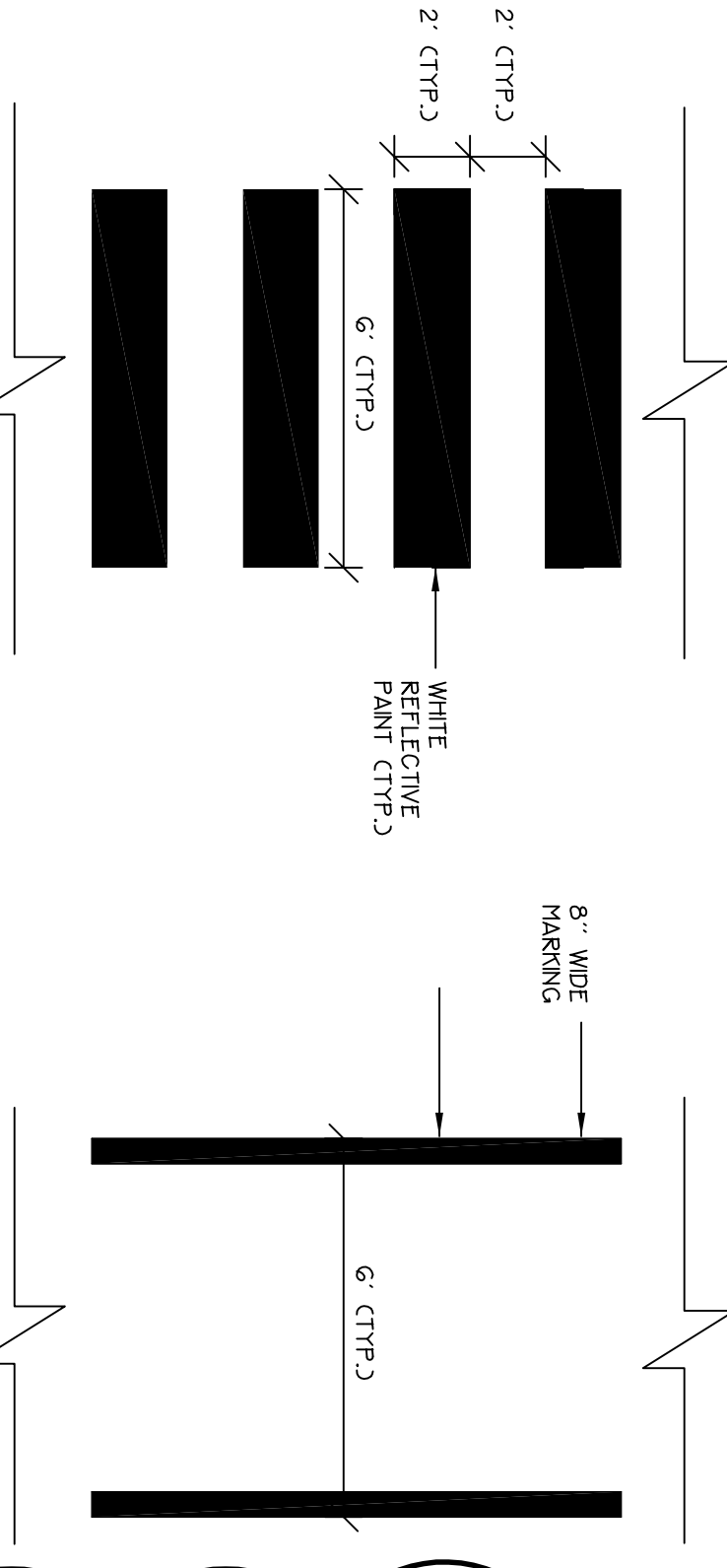


7 BRICK SIDEWALK PATTERN
 SCALE: 1"=10'

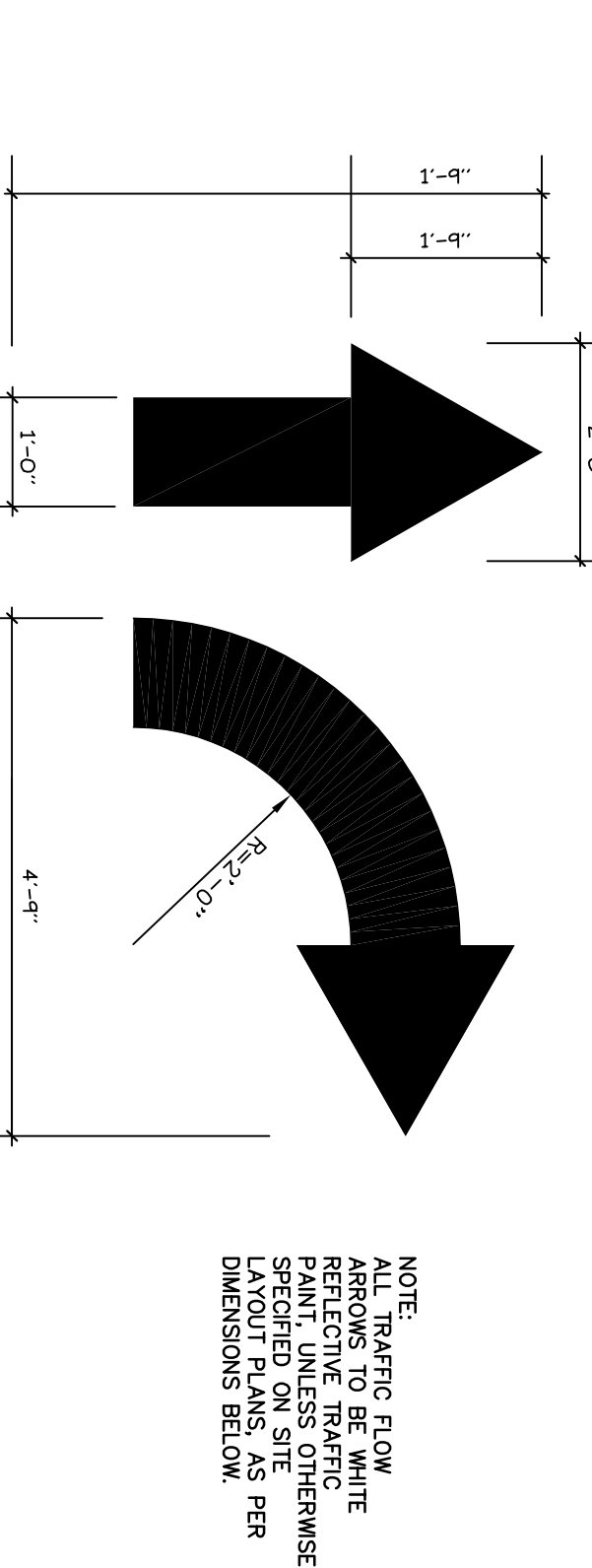
8 ENTRY LOBBY BRICK SIDEWALK
 SCALE: 1"=10'



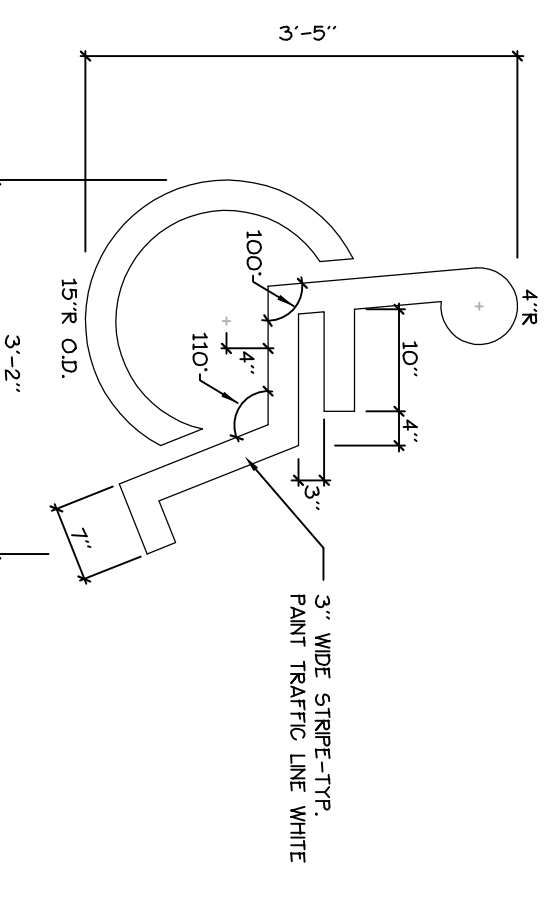
6 CONCRETE WALK SCORING
 SCALE: 1"=10'



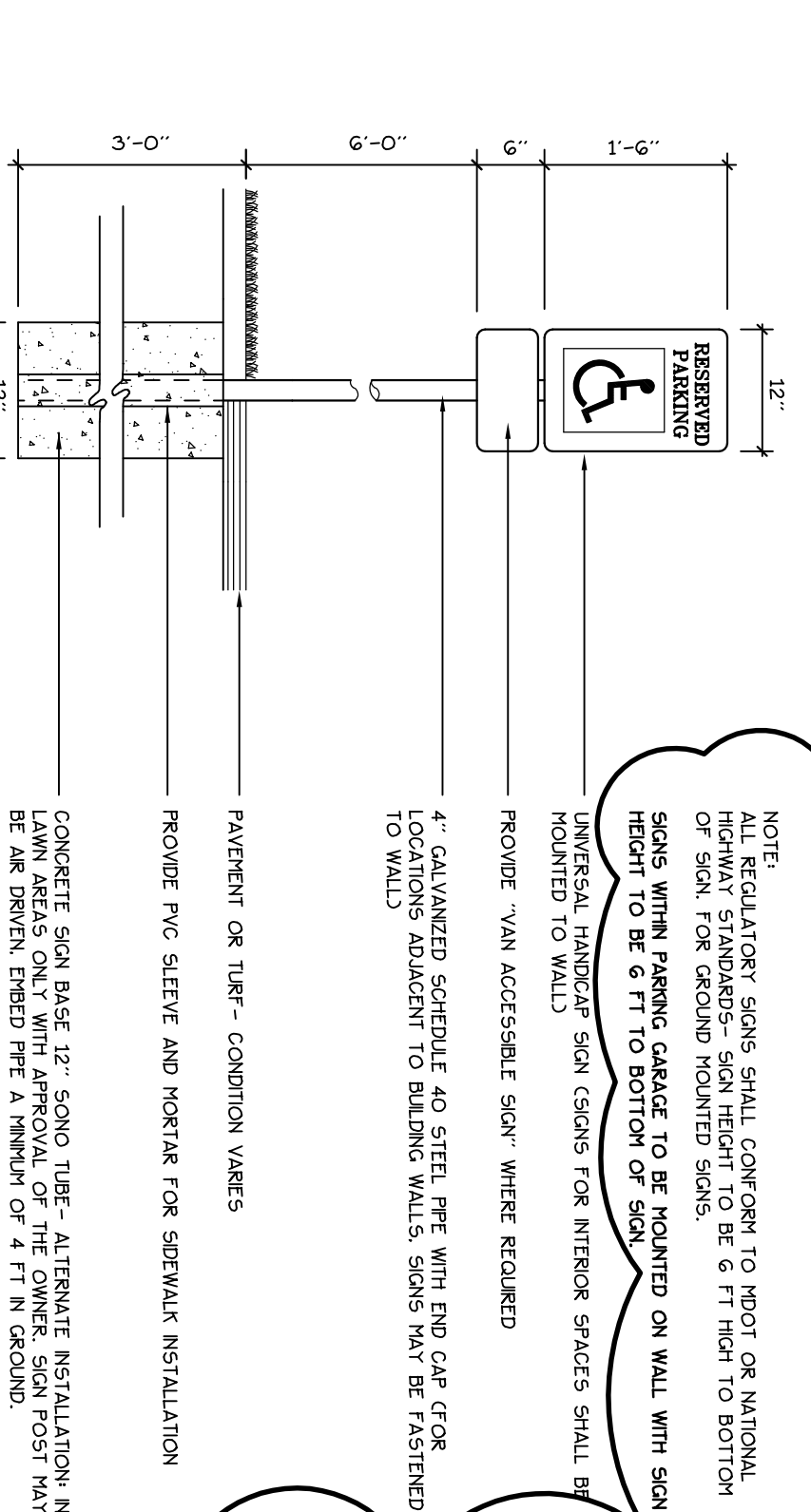
1 PAINTED CROSSWALK DETAIL
 NOT TO SCALE



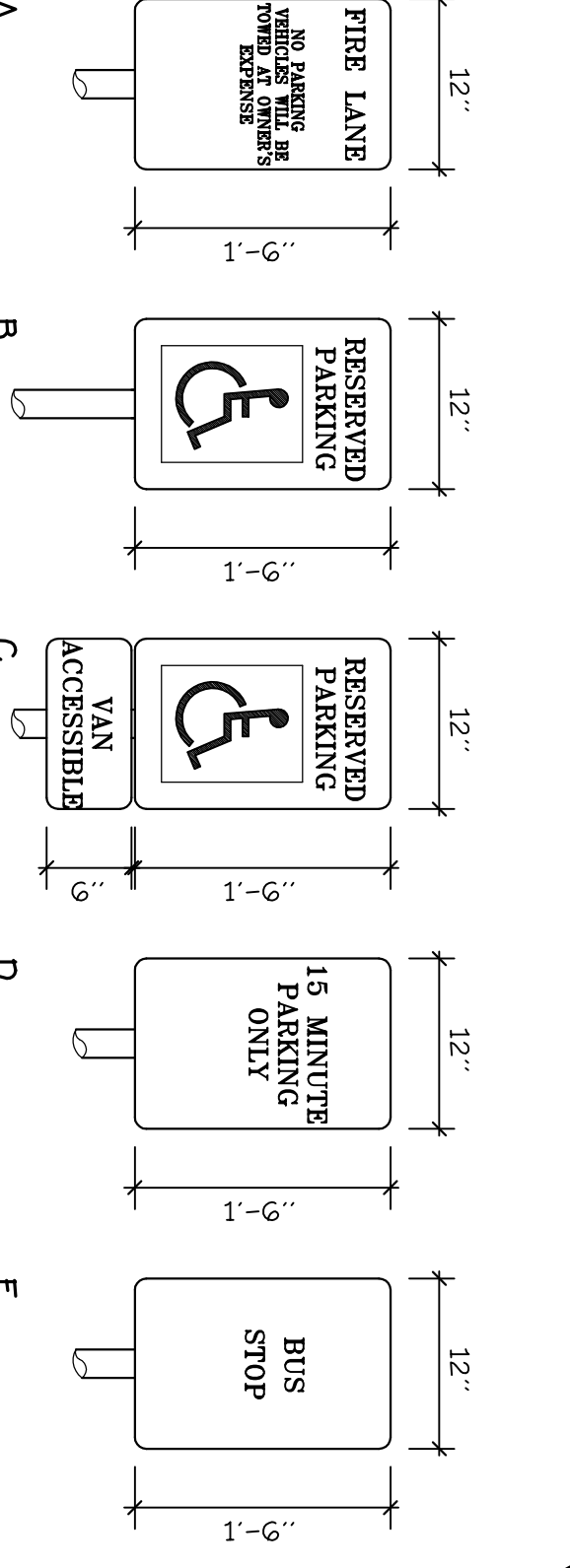
2 PAINTED TRAFFIC ARROW
 NOT TO SCALE



3 HANDICAP SPACE MARKINGS
 NOT TO SCALE



4 SIGNAGE
 NOT TO SCALE



5 SIGNAGE LEGEND