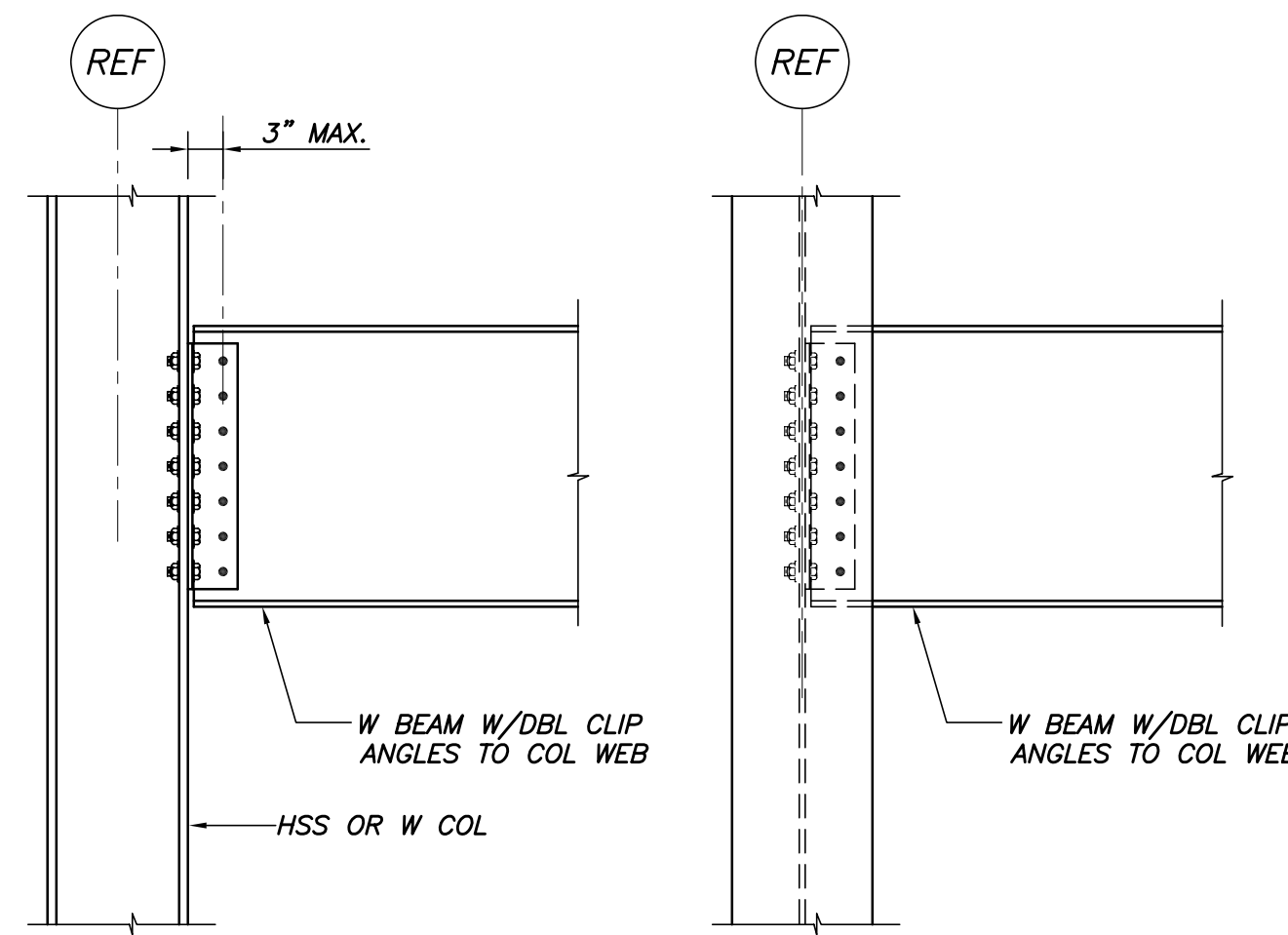
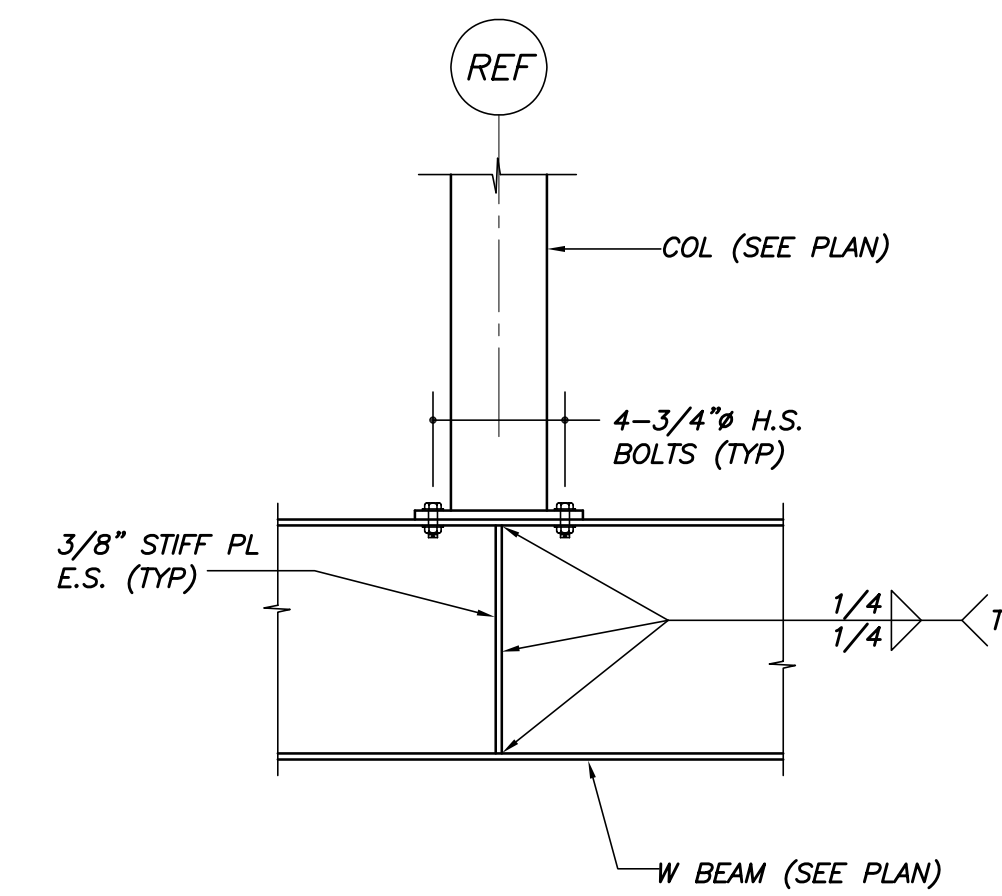


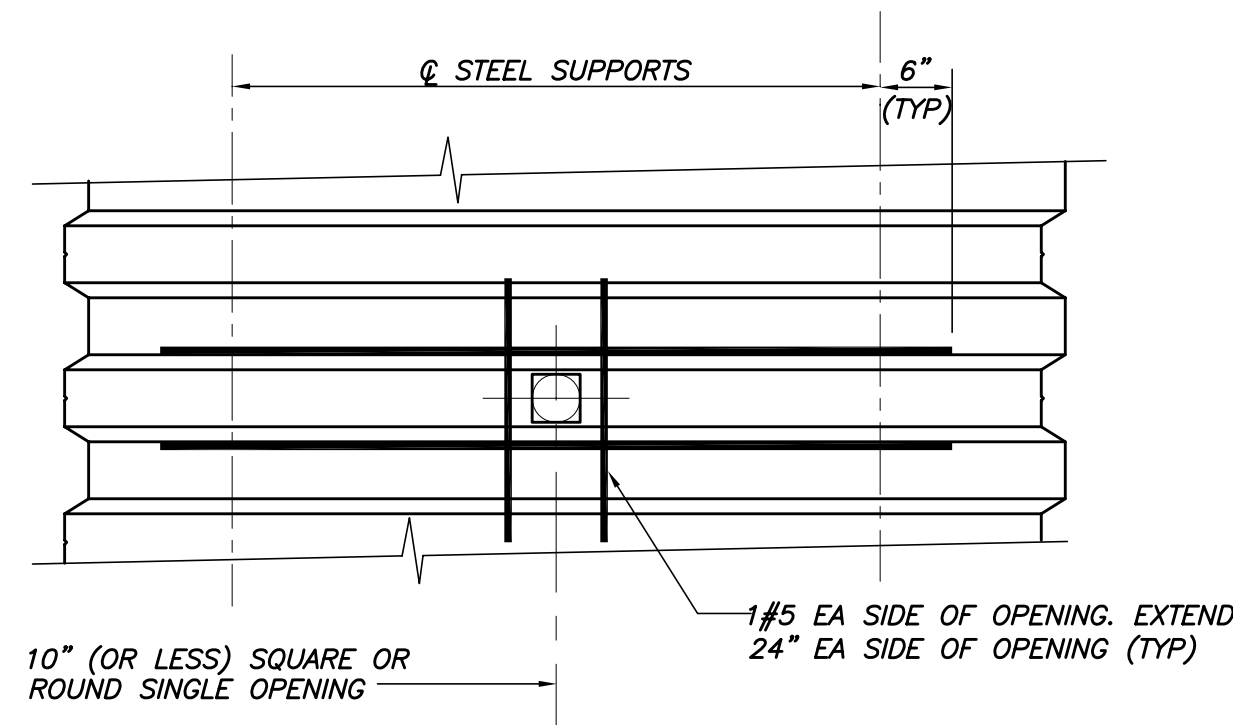
TYP COMPOSITE DECK DETAILS
N.T.S.



TYP BEAM/COL CONN DETAILS
N.T.S.

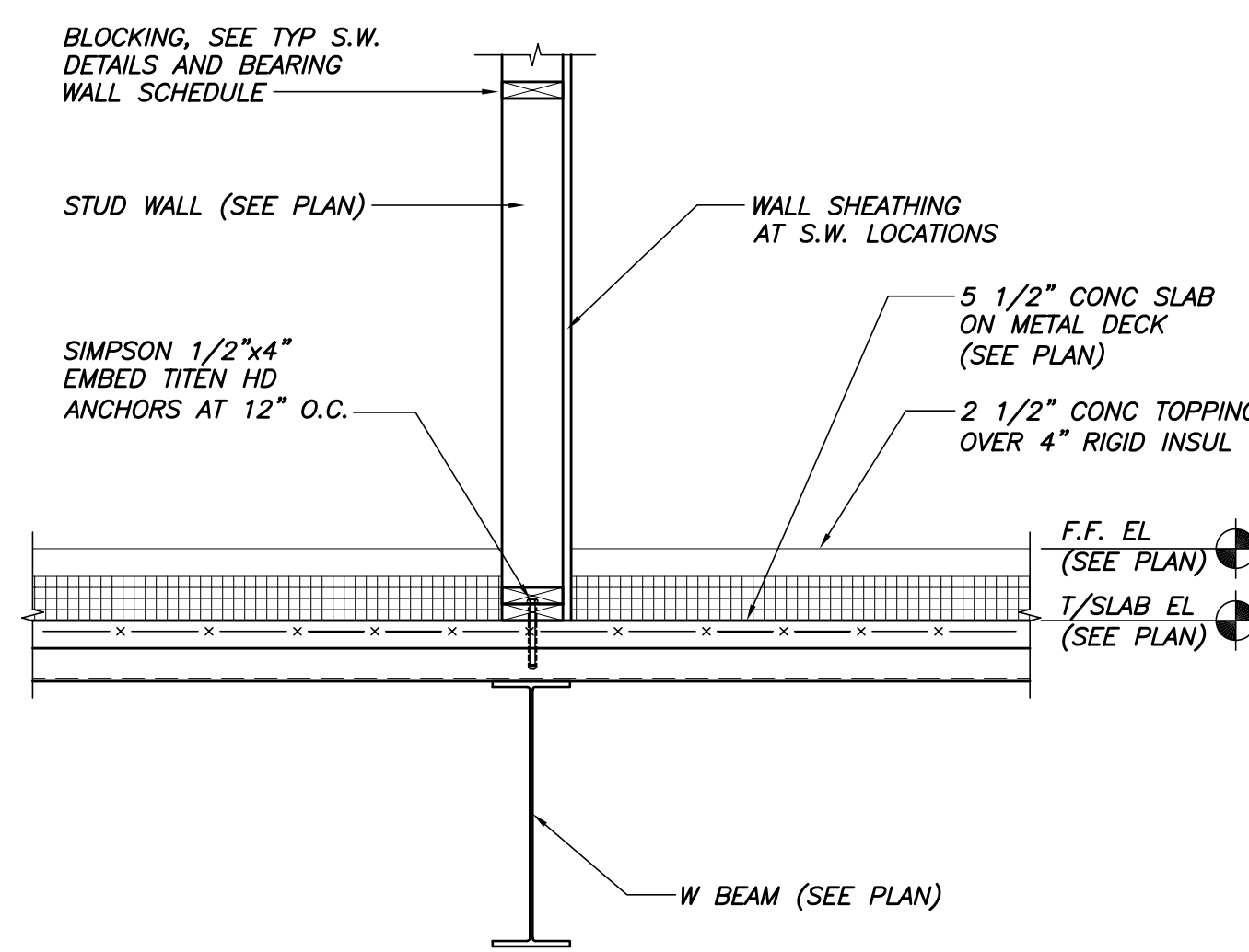


TYP COL TRANSFER DETAIL
N.T.S.

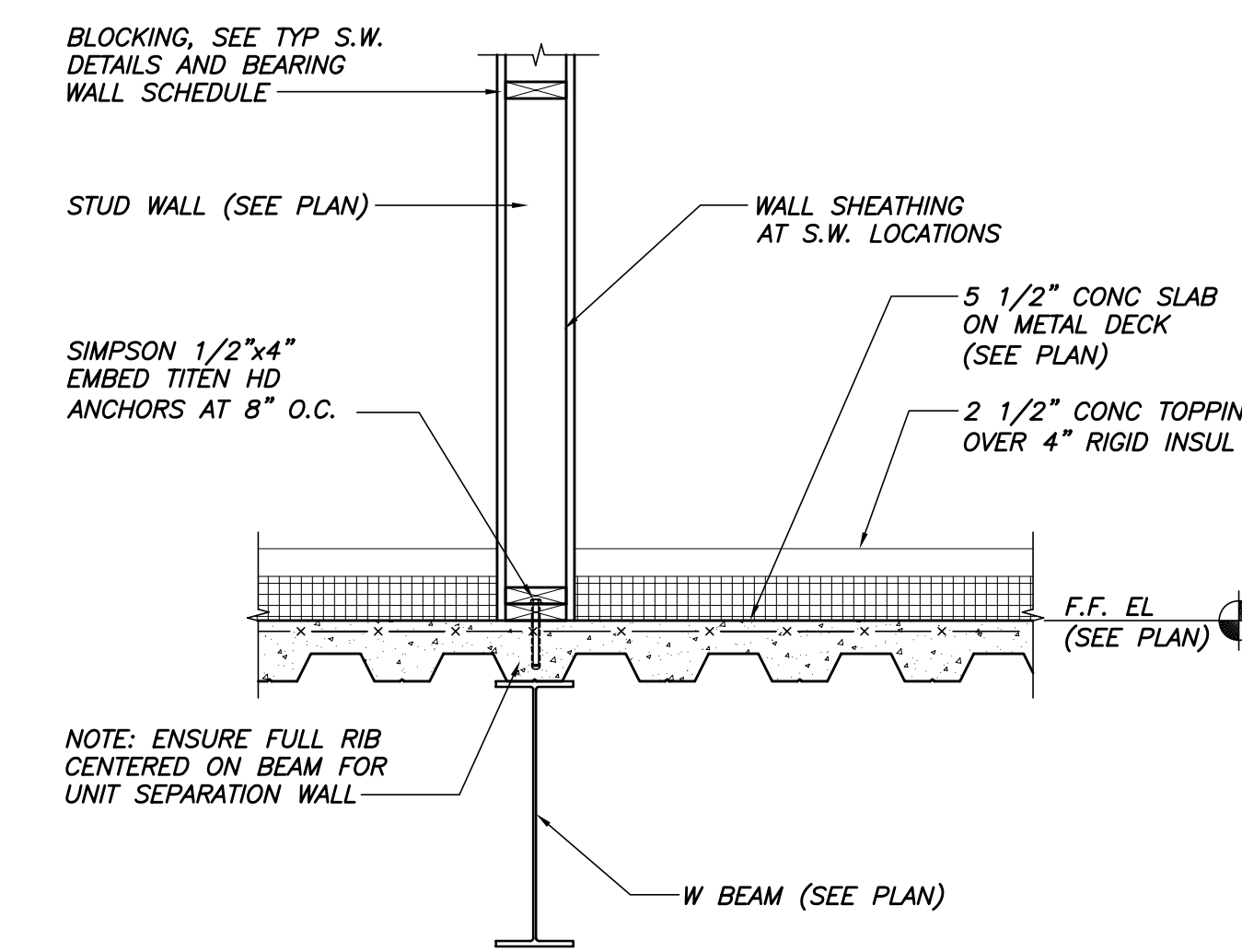


PLAN OF TYP OPENING IN COMPOSITE FLOOR DECK
N.T.S.

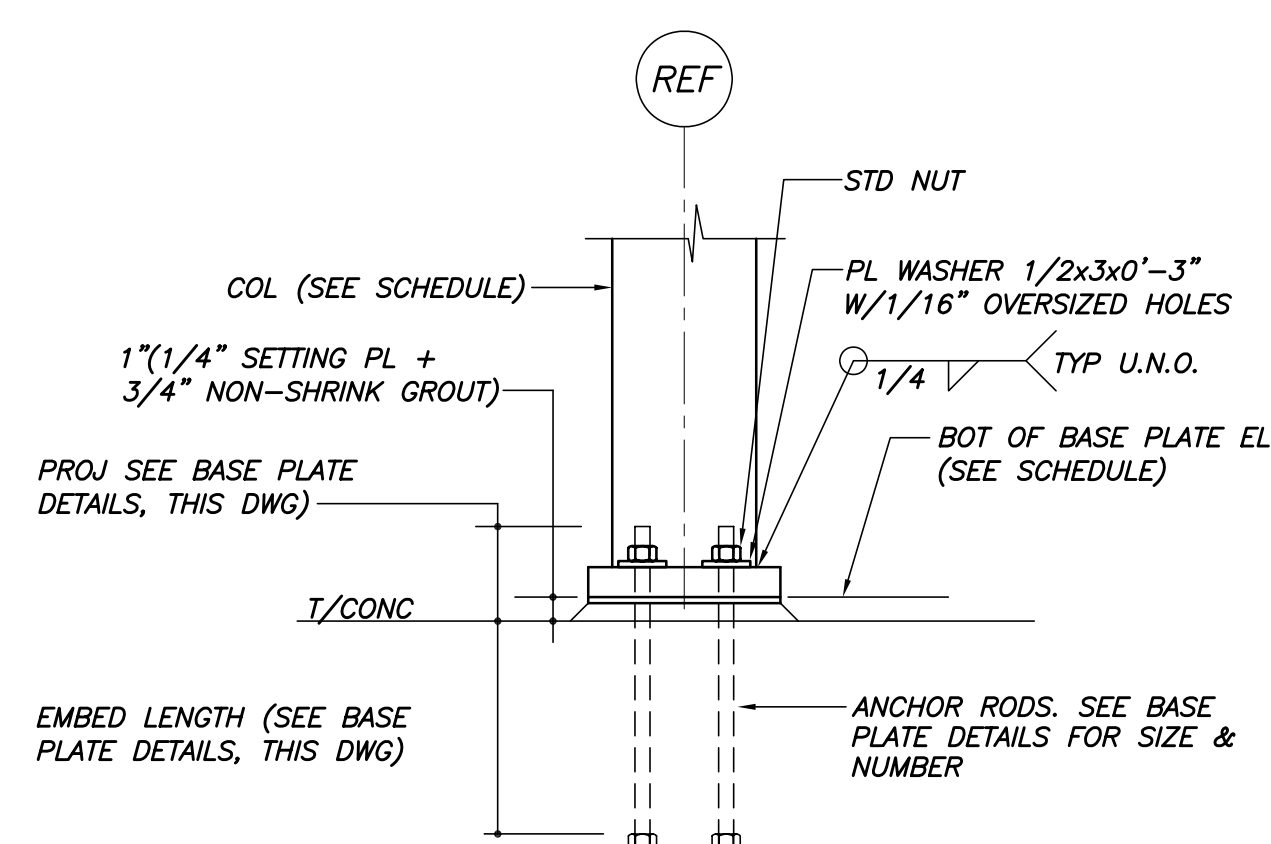
OVERHANG	POUR STOP GAGE
<3"	14 GA
3"-6"	12 GA
7"-9"	10 GA
>9"	SEE SECTIONS & DETAILS



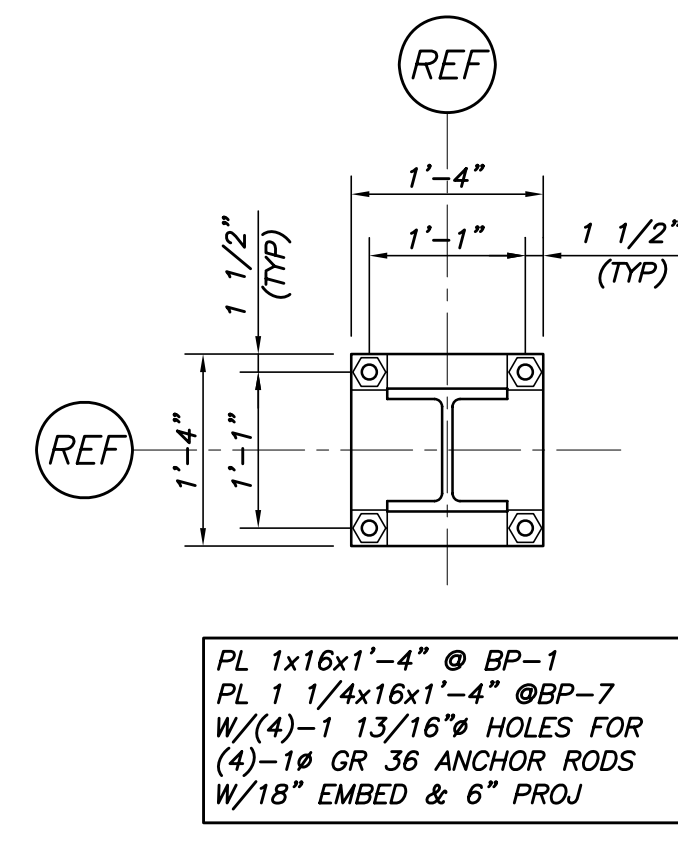
TYP FIRST FLOOR CORRIDOR WALL SECTION
SECTION 1
3/4"=1'-0"



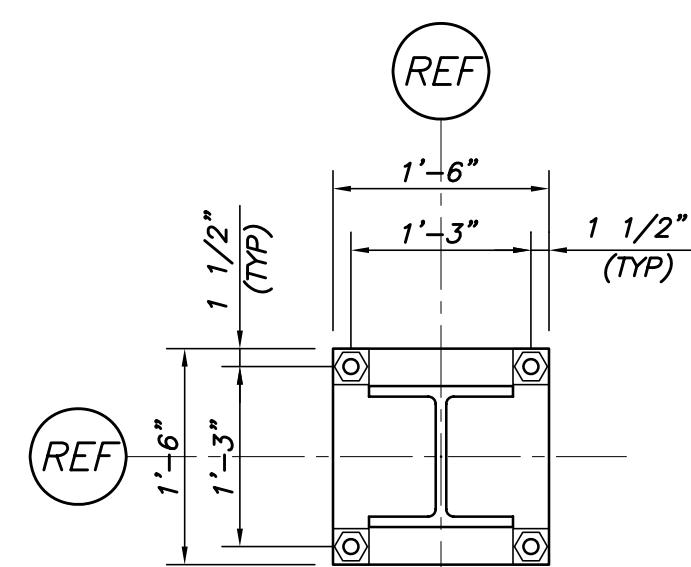
TYP FIRST FLOOR UNIT SEPARATION WALL SECTION
SECTION 2
3/4"=1'-0"



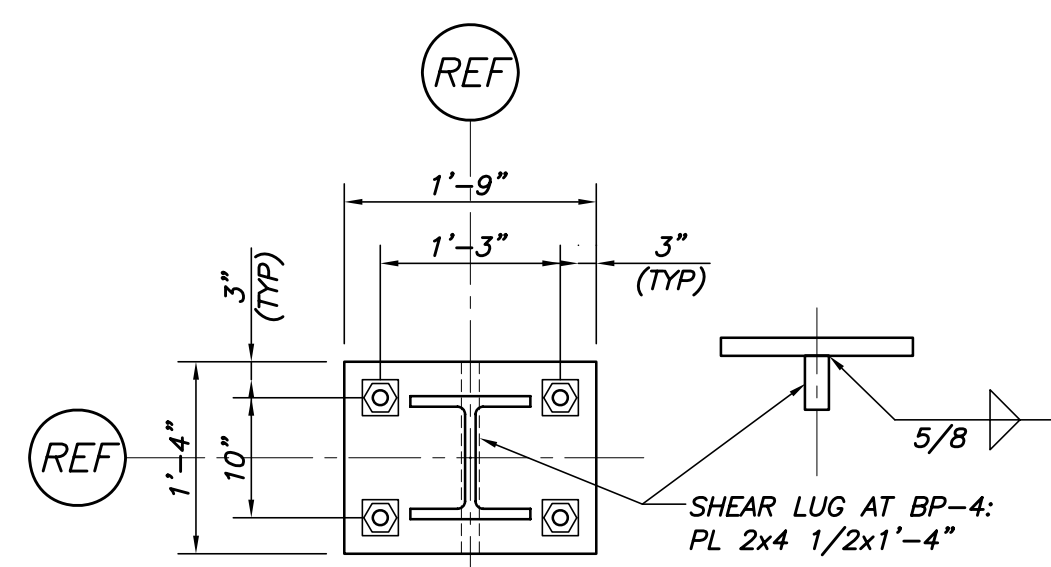
TYP COL BASE DETAIL U.N.O.
N.T.S.



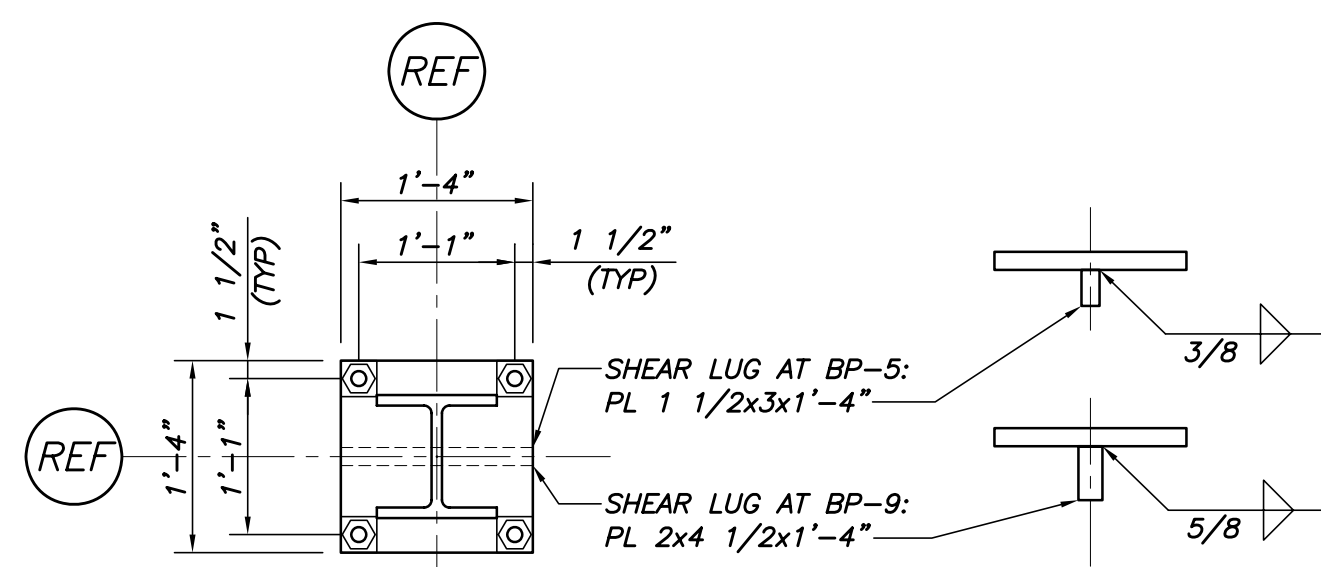
BP-1 & BP-7



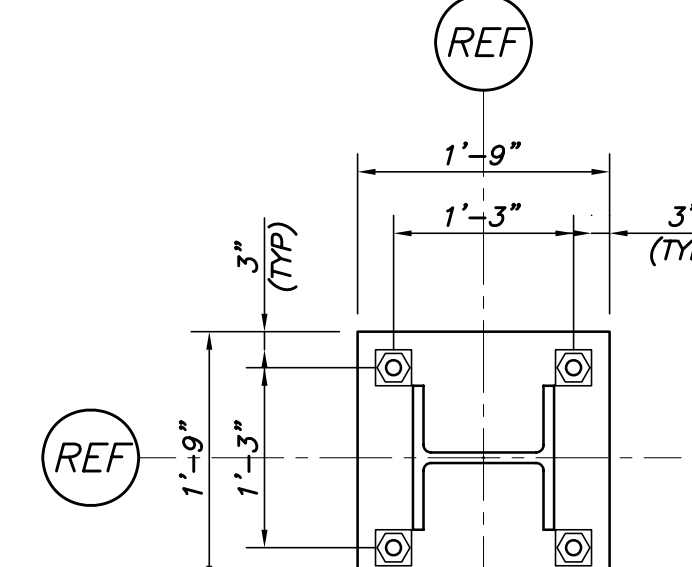
BP-2 & BP-3



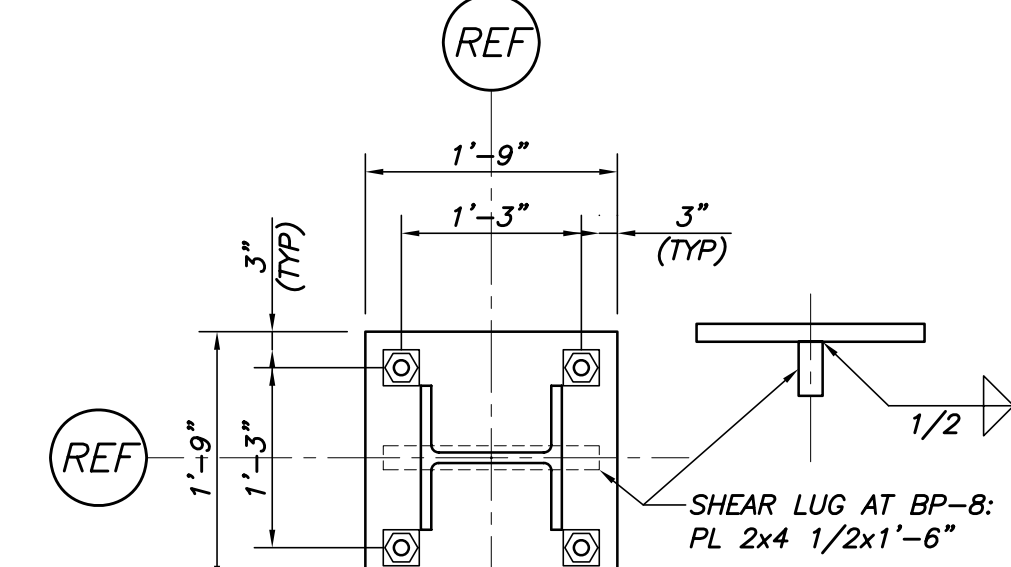
BP-4



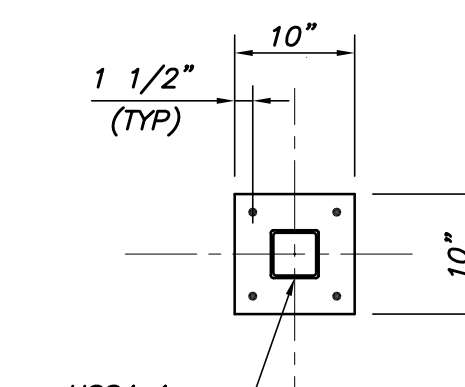
BP-5 & BP-9



BP-6

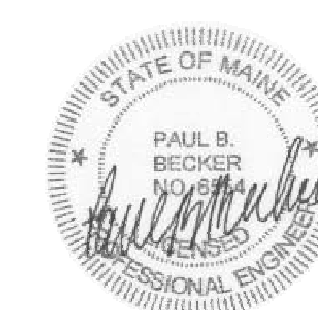


BP-8



BP-10

BASE PLATE DETAILS
N.T.S.



CWS Architects
Architecture
Space Planning
Value Design
434 Cumberland Avenue
Portland, ME 04101
Phone: (207)774-4441
Fax: (207)774-4016
www.CWSarch.com

BECKER
structural engineers, inc.
75 York Street
Portland, ME 04101-4701
Tel: 207-679-3838
Fax: 207-679-3822

Owner: **SOUTHERN MAINE STUDENT HOUSING LLC**
247 COMMERCIAL STREET
ROCKPORT, MAINE 04856
TEL: (207) 236-4067
Contractor: **PIZZAGALLI CONSTRUCTION**
100 FODEN RD WEST, SUITE 300
SOUTH PORTLAND, ME 04106
TEL: (207) 847-2323
FAX: (207) 874-2727

BAYSIDE VILLAGE - A STUDENT HOUSING COMPLEX
120 MARGINAL WAY
PORTLAND, MAINE
Project No: 2006-425.BSV

Drawing Title: **FRAMING SECTIONS & DETAILS**
Scale: NOTED
Date: 09/05/2007
Revisions:
Drawing Number: **S3.1**