

PUMP SCHEDULE

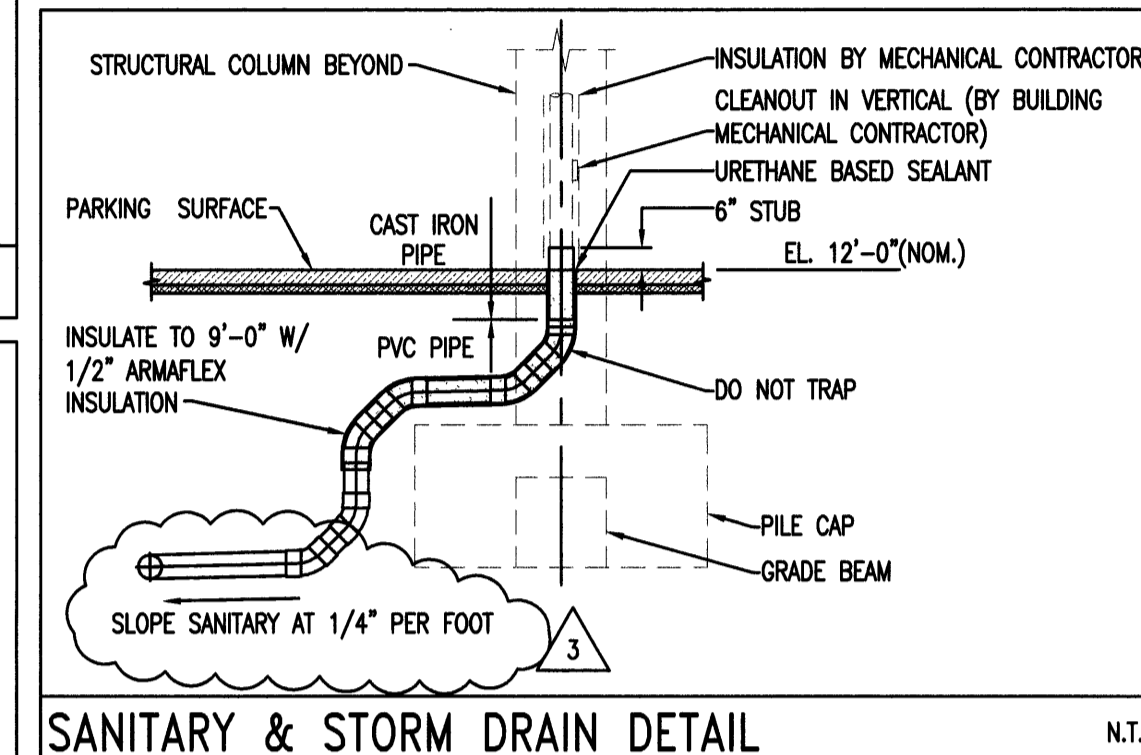
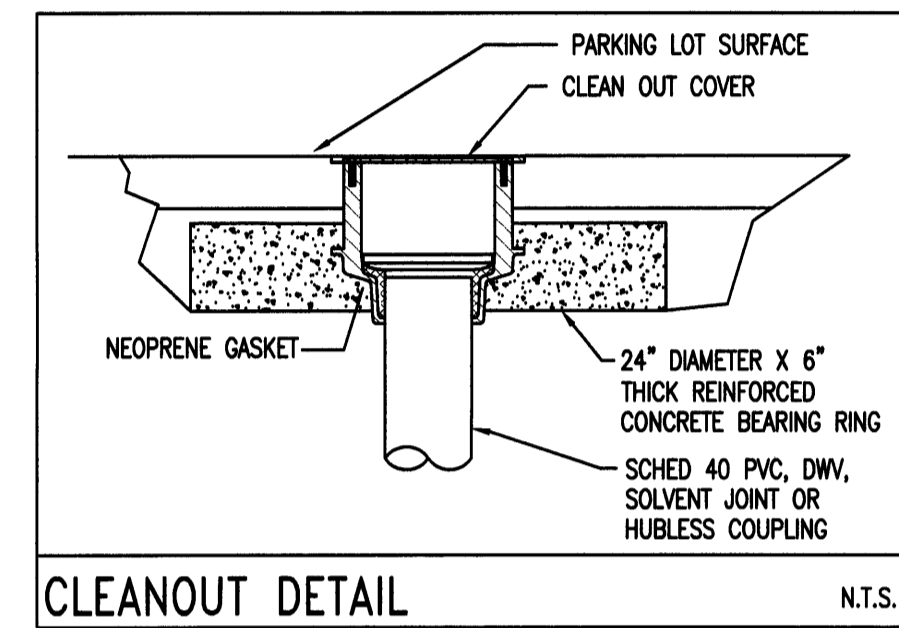
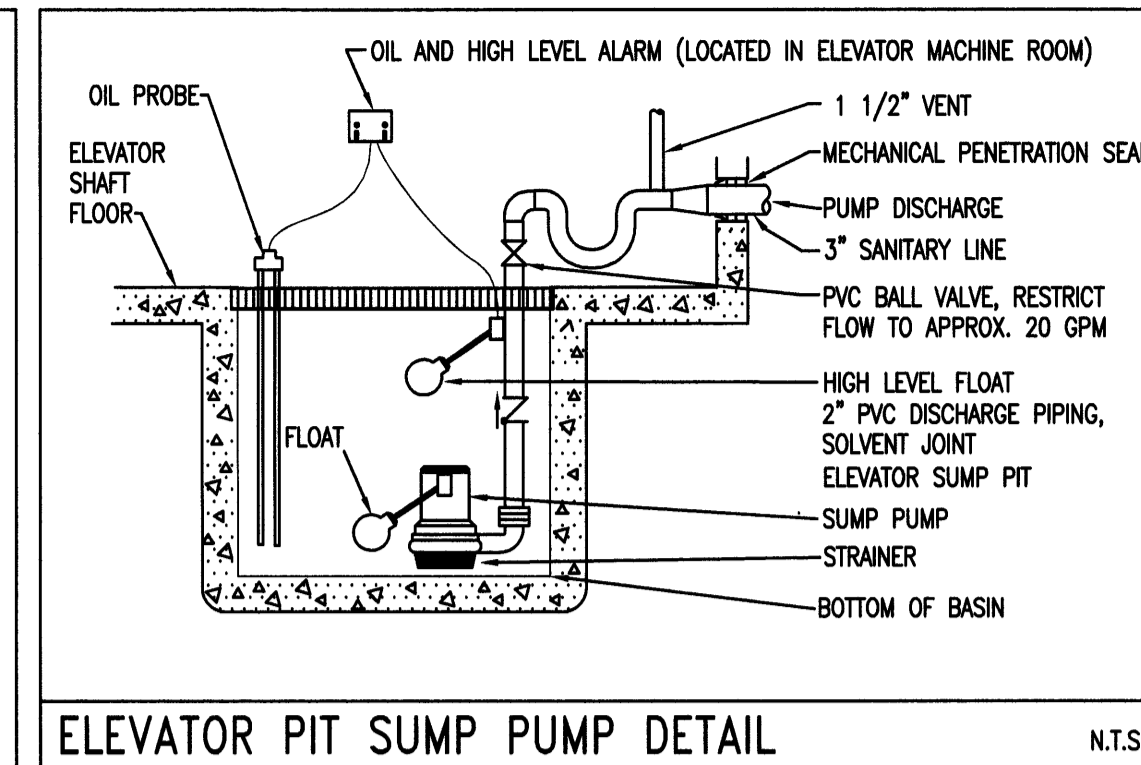
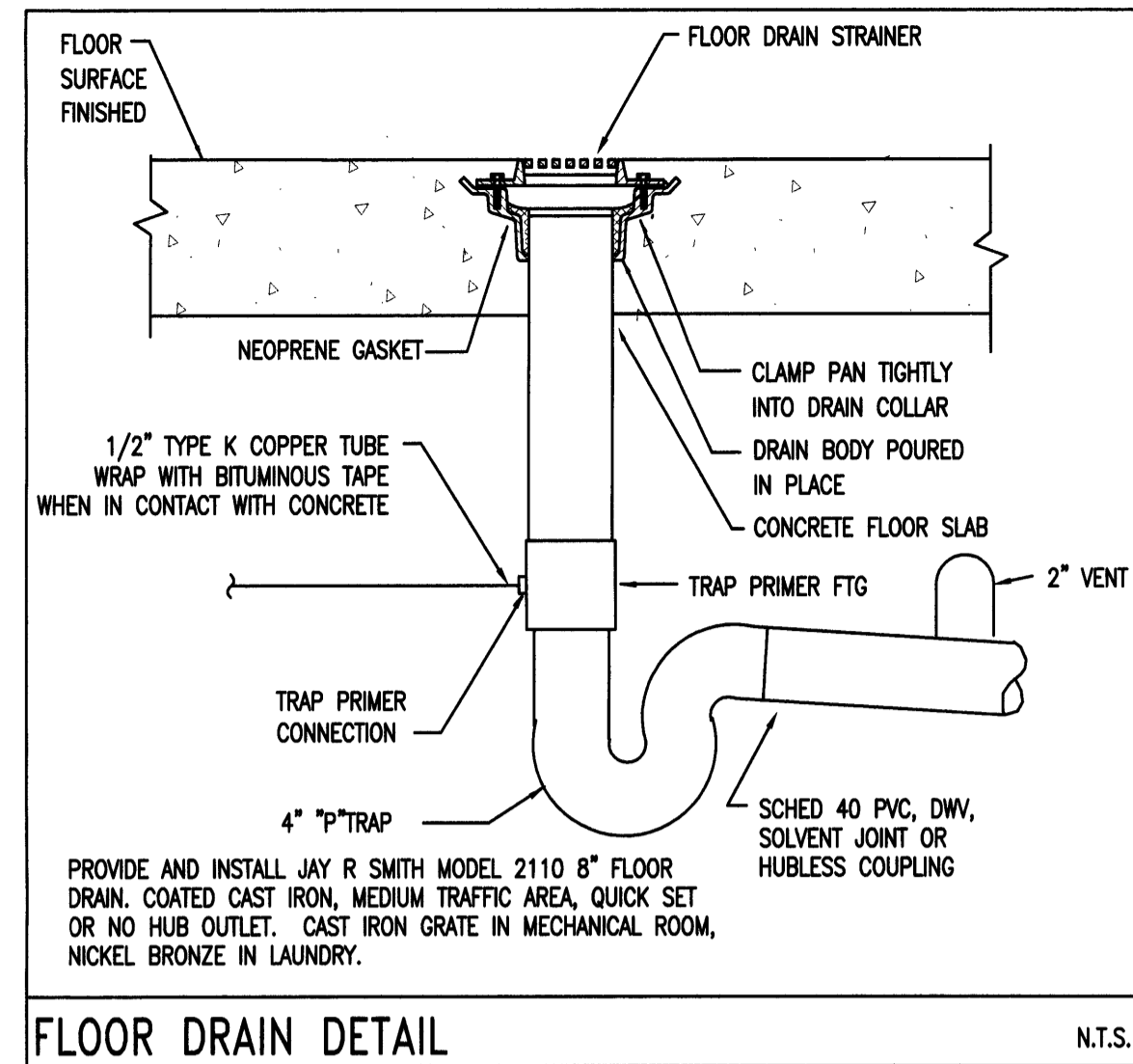
ITEM	GPM	HEAD - FT W.G.	FLUID	MOTOR H.P.	VOLTS-PH	RPM	SIZE	MFR/MODEL	NOTES
ELEVATOR SUMP PUMP	20	17	WATER	0.4	120/1	3600	2"	STANCOR SE40	1

NOTES: 1. PROVIDE AND INSTALL THE COMPLETE STANCOR OIL MINDER PACKAGE INCLUDING OIL PROBE, HIGH LEVEL FLOAT, AND ALARM CONTROLLER.

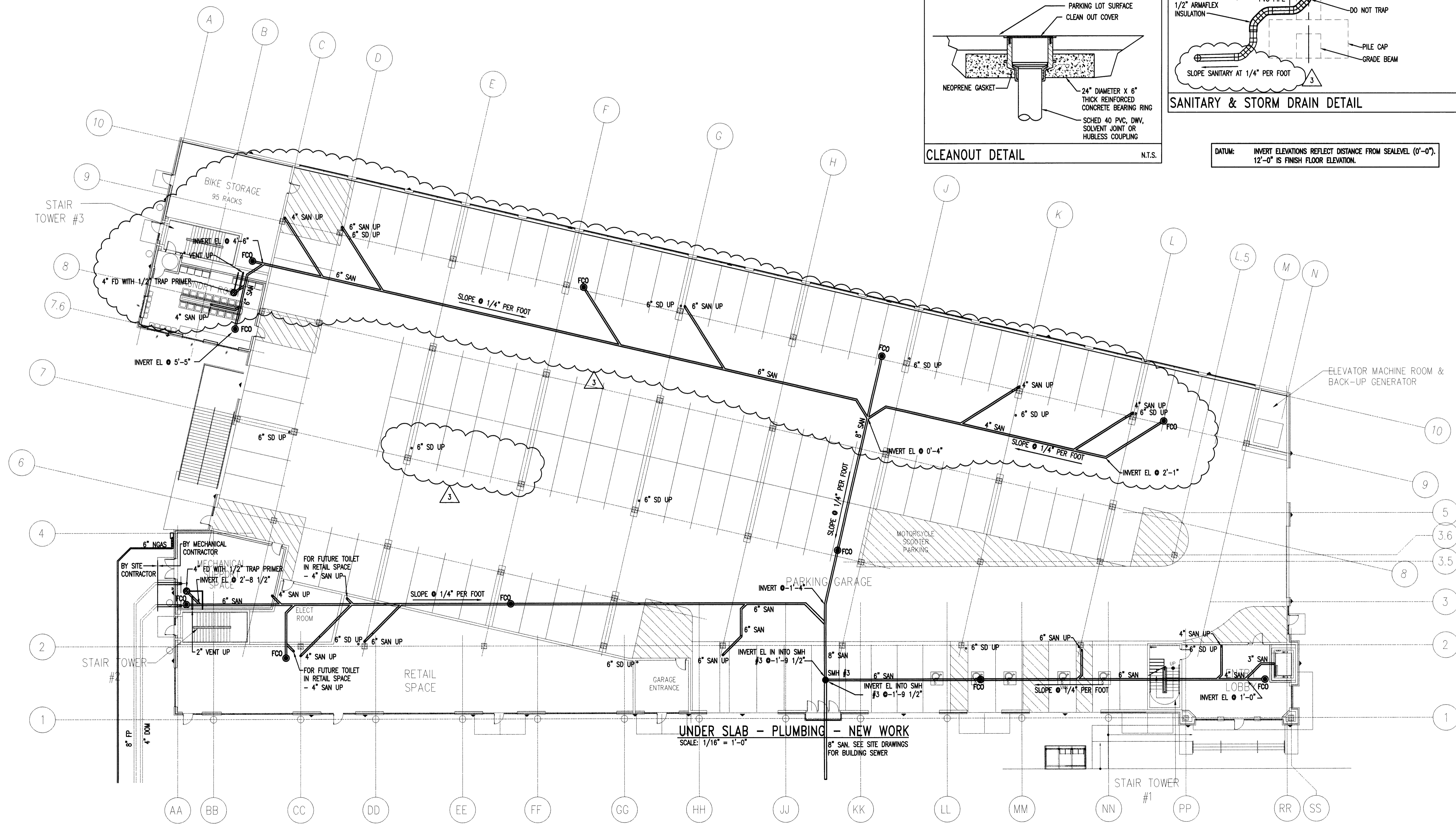
PLUMBING FIXTURE SCHEDULE

FIXTURE TYPE	MANUFACTURER AND MODEL NOTES
FLOOR CLEAN OUT - PARKING LOT	JR SMITH 4261L - HEAVY DUTY CAST IRON BODY AND COVER, LOW FLANGE FOR CONCRETE RING SUPPORT.
FLOOR CLEAN OUT - INSIDE	JR SMITH 4031L - CAST IRON BODY AND NICKEL BRONZE COVER

NOTES:



DATUM: INVERT ELEVATIONS REFLECT DISTANCE FROM SEALEVEL (0'-0"), 12'-0" IS FINISH FLOOR ELEVATION.



- PRELIMINARY - NOT FOR CONSTRUCTION
 - APPROVED FOR CONSTRUCTION
 - SUPERSEDES ALL PREVIOUS ISSUES
- BY _____ DATE _____

REFERENCE DRAWINGS

DWG. NO.	TITLE	BY

Released For Construction
Date: Aug 28, 2007

REV.	ISSUED TO	ISSUED FOR

THIS DRAWING IS THE PROPERTY OF NEILL AND GUNTER INCORPORATED AND IS TO BE USED ONLY FOR THE SPECIFIC PROJECT IDENTIFIED ON THE DRAWING. NO REVISIONS SHALL BE MADE WITHOUT THE EXPRESSED WRITTEN CONSENT OF NEILL AND GUNTER INCORPORATED.

NO.	DATE	BY	REVISIONS	CKD.
3	28-AUG-2007	NMG	FIELD CHANGES	AWH
2	21-AUG-2007	NMG	LOCATED STORM DRAIN DROPS	AWH
1	03-AUG-2007	NMG	ADDED THAYER MARKUPS	AWH

DESIGNED: AWH
DRAWN: AWH
CHECKED: AWH
DATE: 7/23/2007
DESIGN: DFTG
SCALE: AS NOTED
NAME: NMG
SPEC: ---
APPROVED: RAN
PROJ. ENG: AWH

Neill and Gunter
BAYSIDE VILLAGE
120 MARGINAL WAY
PORTLAND, MAINE

BAYSIDE VILLAGE
A STUDENT HOUSING COMPLEX
JOB NO. 26391 DWG. NO. P-2