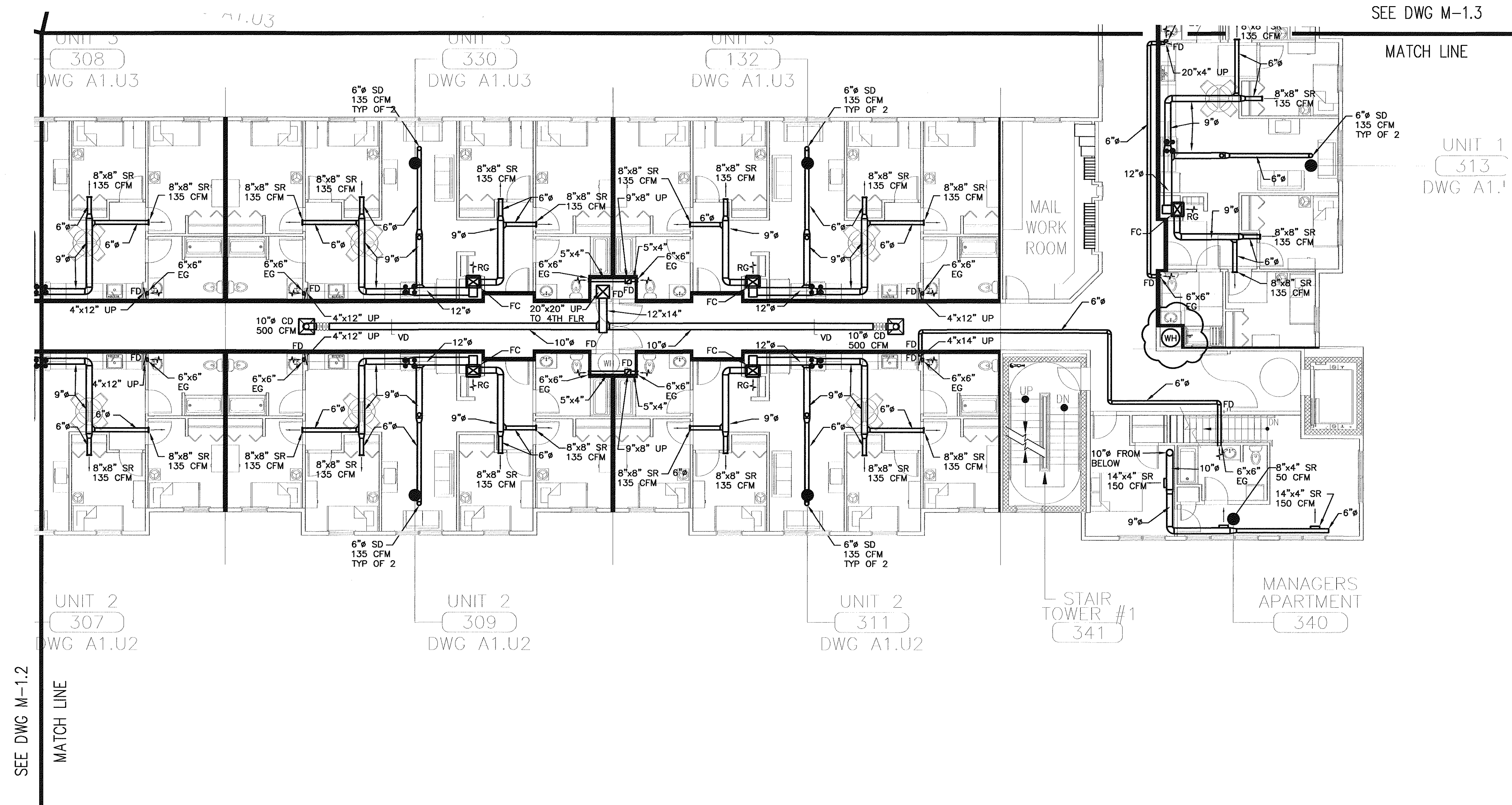


NOTE:

EXHAUST AT ALL
BATHROOM 50 CFM



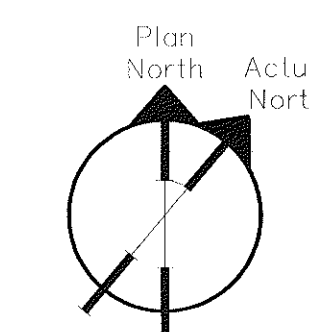
SEE DWG M-1.3

MATCH LINE

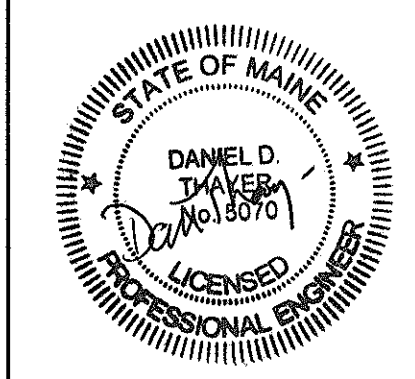
UNIT 1
313
DWG A1.1

SEE DWG M-1.2

MATCH LINE



| | | |
|------|-------------------------|----------|
| 2 | ISSUED FOR CONSTRUCTION | 09-14-07 |
| 1 | UPDATE WATER HEATER | 09-10-07 |
| 0 | 100% CD | 08-31-07 |
| REV. | DESCRIPTION | DATE |



| | |
|---|--|
| DESIGN/BUILD/MAINTAIN | |
| THAYER CORPORATION 1400 Hotel Road AUBURN, MAINE 04211 Tel. (207)782-4197 Fax (207)782-1064 | |
| PROJECT: | BAYSIDE VILLAGE - A STUDENT HOUSING COMPLEX 120 MARGINAL WAY PORTLAND, MAINE |
| SHEET TITLE: | HVAC THIRD FLOOR |
| SCALE: | 1/8" = 1'-0" DATE: 08/15/2007 |
| PROJECT MANAGER: | ADK |
| JOB CAP/DRAWN: | MAS |
| E OF RECORD: | DDT |
| THAYER CAD FILE | SHEET No. M3.4 |