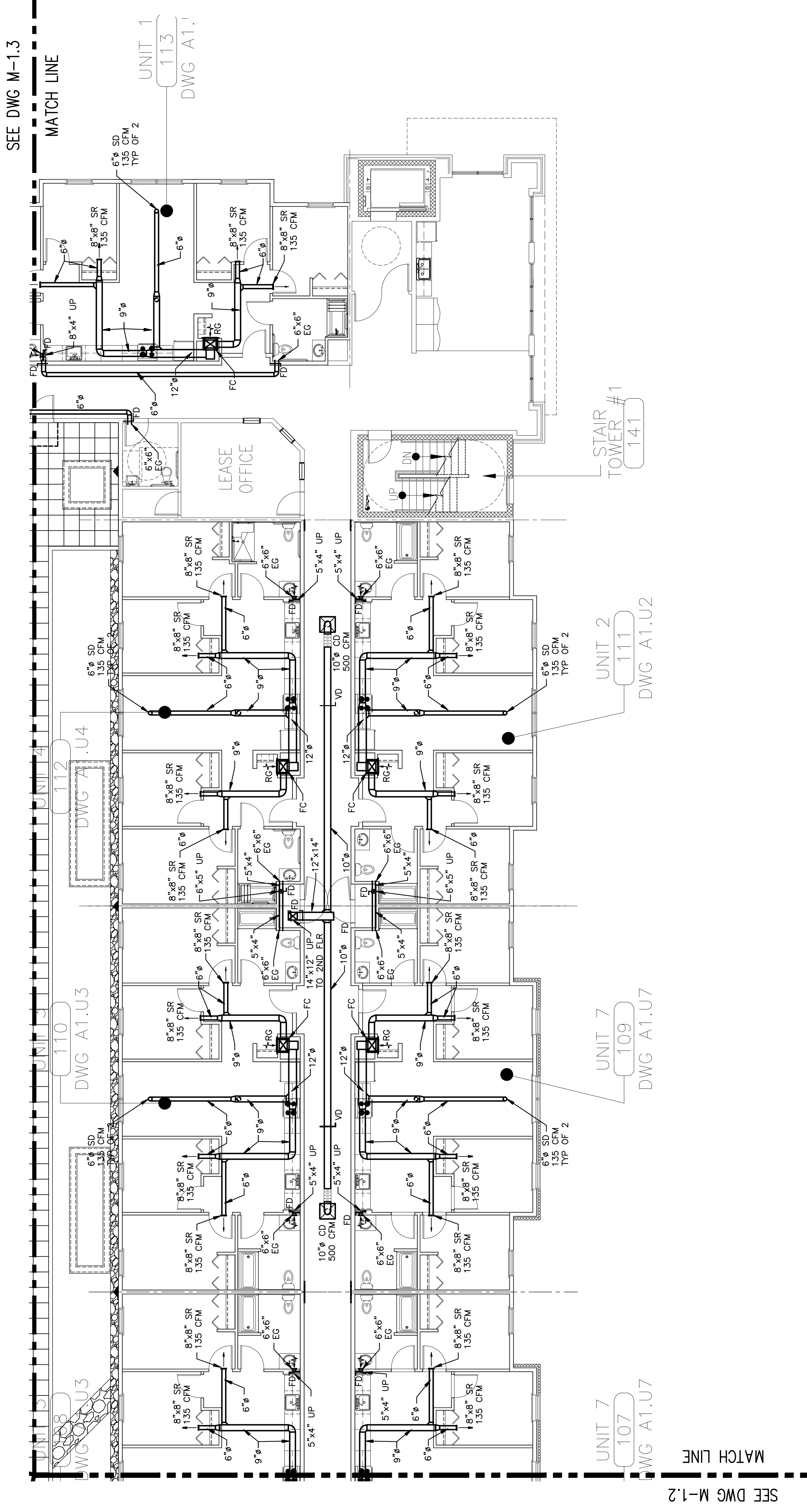
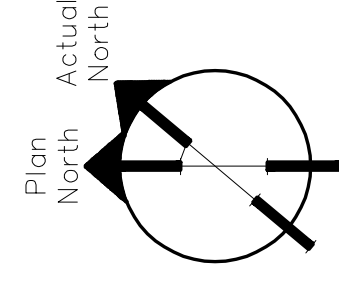


NOTE:
EXHAUST AT ALL
BATHROOM 50 CFM



SEE DWG M-1.2
MATCH LINE

SEE DWG M-1.3
MATCH LINE



REV.	DESCRIPTION	DATE
0	100% CD	08-31-07

DESIGN/BUILD/MAINTAIN
THAYER CORPORATION
1400 Royal Road
Portland, Maine 04111
Tel. (207)782-4197 Fax (207)782-1064

PROJECT: BAYSIDE VILLAGE
— A STUDENT
HOUSING COMPLEX
120 MARGINAL WAY
PORTLAND, MAINE

SHEET TITLE: **HVAC**
FIRST FLOOR

SCALE:	1/8"=1'-0"	DATE:	08/15/2007
PROJECT MANAGER:	ADK		
JOB CAP/DRAWN:	WAS		
E OF RECORD:	DDT		
THAYER CAD FILE			

SHEET No. **M1.4**