

**ESB**  
**E.S. BOULOS CO**  
 ELECTRICAL CONTRACTORS  
 45 BRADLEY DRIVE  
 WESTBROOK, ME 04092  
 TEL: (207) 464-3706  
 FAX: (207) 464-1833

**SM**  
**RT**

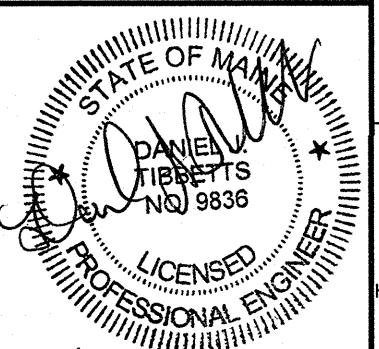
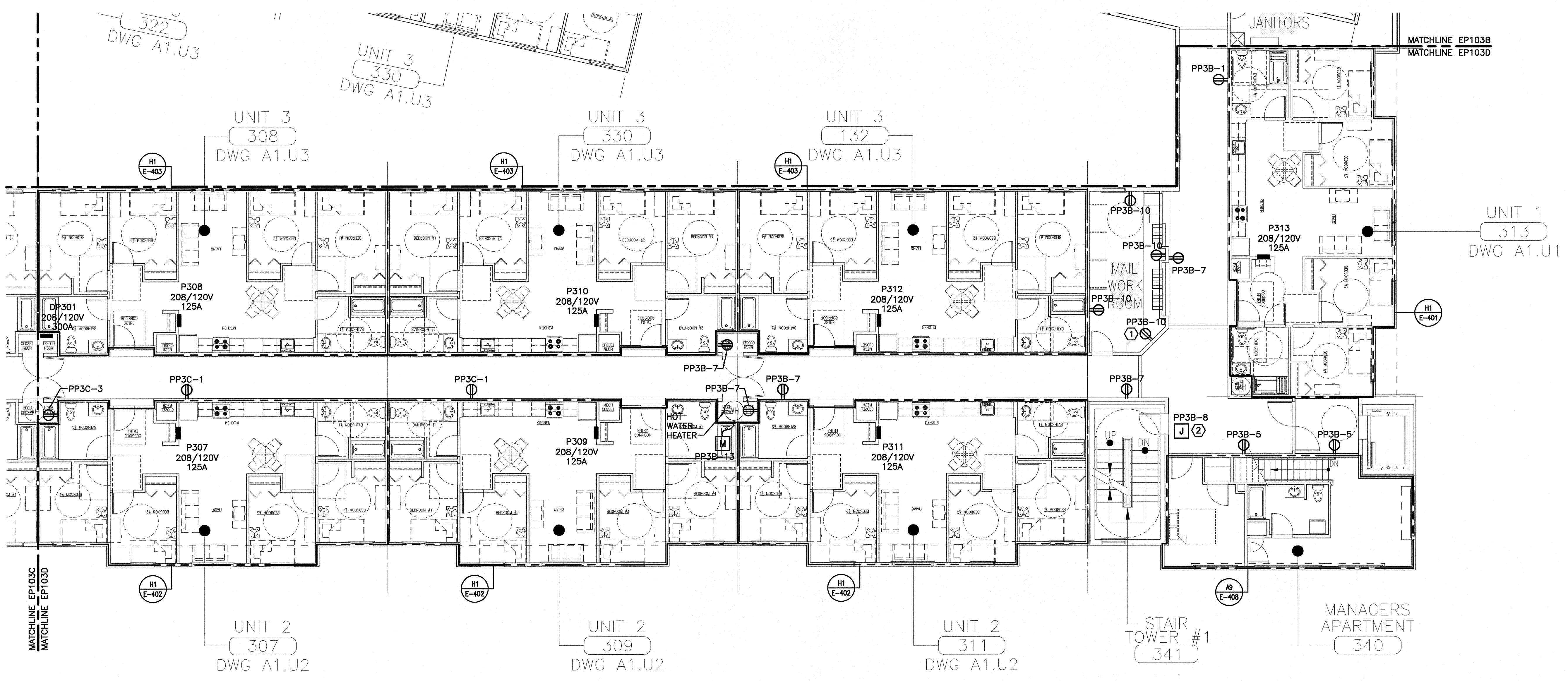
ARCHITECTURE ENGINEERING PLANNING  
 SWART  
 144 Fore Street/P.O. Box 618  
 Portland, Maine 04104  
 tel. (207) 772-3846  
 fax. (207) 772-1070

**NOTE:**

- 1. SEE SHEET E-001 FOR LEGEND AND GENERAL NOTES.

**KEYED NOTE:**

- ① MOUNT RECEPTACLE 42" AFF TO BOTTOM OF DEVICE.
- ② PROVIDE POWER FOR HVAC CONTROLS. FIELD COORDINATE EXACT LOCATION OF ELECTRICAL CONNECTION.



9/17/07

PROJECT TITLE:  
**BAYSIDE VILLAGE  
 STUDENT HOUSING COMPLEX**  
 PORTLAND, ME  
 CURRENT ISSUE STATUS:  
**ISSUED FOR CONSTRUCTION  
 9-14-07**

REV	DESCRIPTION	DATE
0	ISSUED FOR CONSTRUCTION	9-14-07

GRAPHIC SCALE:  
 0" 1"  
 SCALE: 1/8"=1'-0"  
 PROJECT MANAGER: DJT  
 JC/DRAWN BY: CDS  
 A/E OF RECORD: DJT  
 CAD FILE: EP103D-07125  
 PROJECT NO: 07125  
 DATE: 9-14-07

SHEET TITLE:  
**THIRD FLOOR  
 POWER PLAN D**

SHEET No.  
**EP103D**  
© copyright 2007 ESB Inc.

A1 THIRD FLOOR PLAN

1/8"=1'-0"