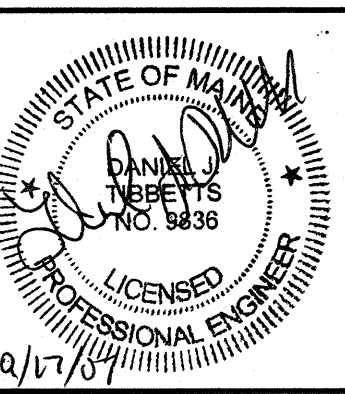
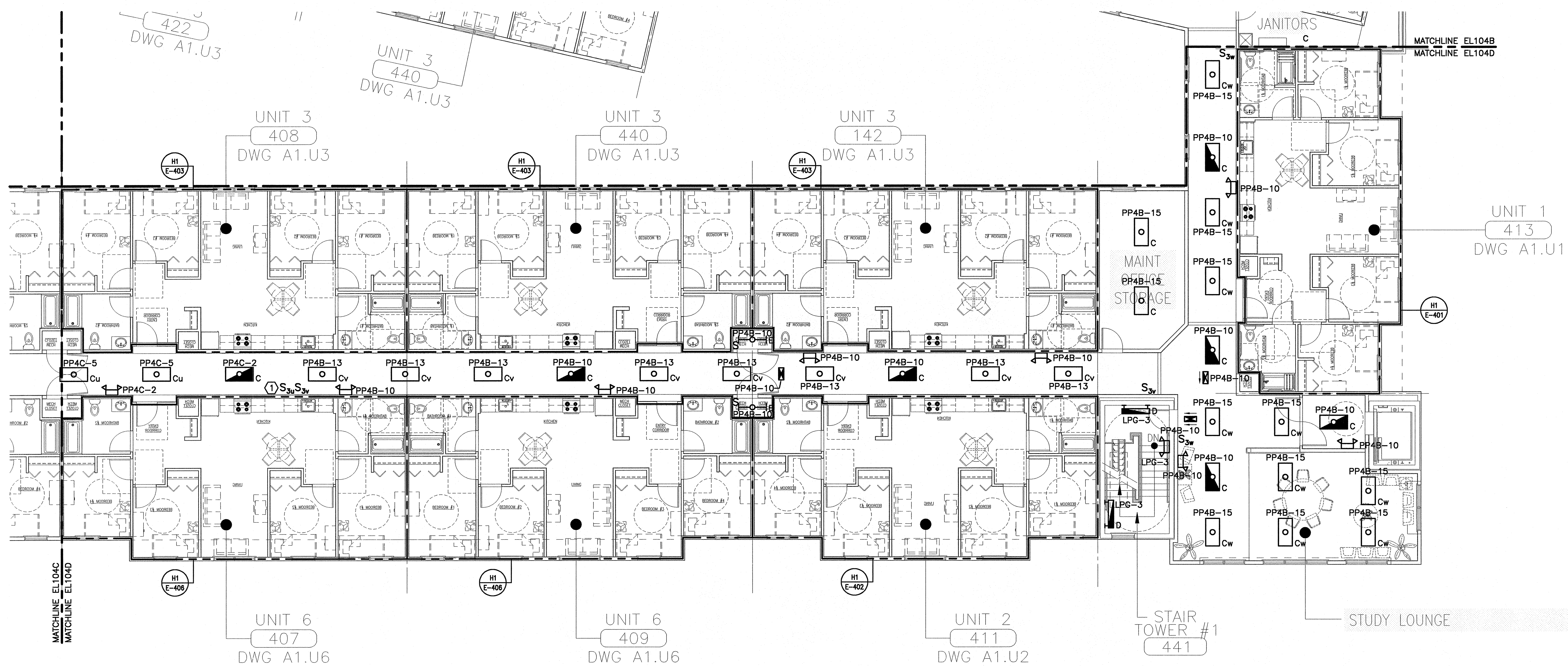


NOTE:

1. SEE SHEET E-001 FOR LEGEND AND GENERAL NOTES.

KEYED NOTE:

① SEE SHEET EL104C FOR LOCATION OF SECOND THREE WAY SWITCH.



**BAYSIDE VILLAGE
 STUDENT HOUSING COMPLEX**
 PORTLAND, ME
**ISSUED FOR CONSTRUCTION
 9-14-07**

REV	DESCRIPTION	DATE
0	ISSUED FOR CONSTRUCTION	9-14-07

GRAPHIC SCALE:
 0" 1"
 SCALE: 1/8"=1'-0"
 PROJECT MANAGER: DJT
 JC/DRAWN BY: CDS
 A/E OF RECORD: DJT
 CAD FILE: EL104D-07125
 PROJECT NO: 07125
 DATE: 9-14-07
 SHEET TITLE:

**FOURTH FLOOR
 LIGHTING PLAN D**

SHEET No.
EL104D

A1 **FOURTH FLOOR PLAN**

1/8"=1'-0"