

NOTE:

1. SEE SHEET E-001 FOR LEGEND AND GENERAL NOTES.

ESB
E.S. BOULOS CO
 ELECTRICAL CONTRACTORS

45 BRADLEY DRIVE
 WESTBROOK, ME 04092
 TEL: (207) 464-3706
 FAX: (207) 464-1833

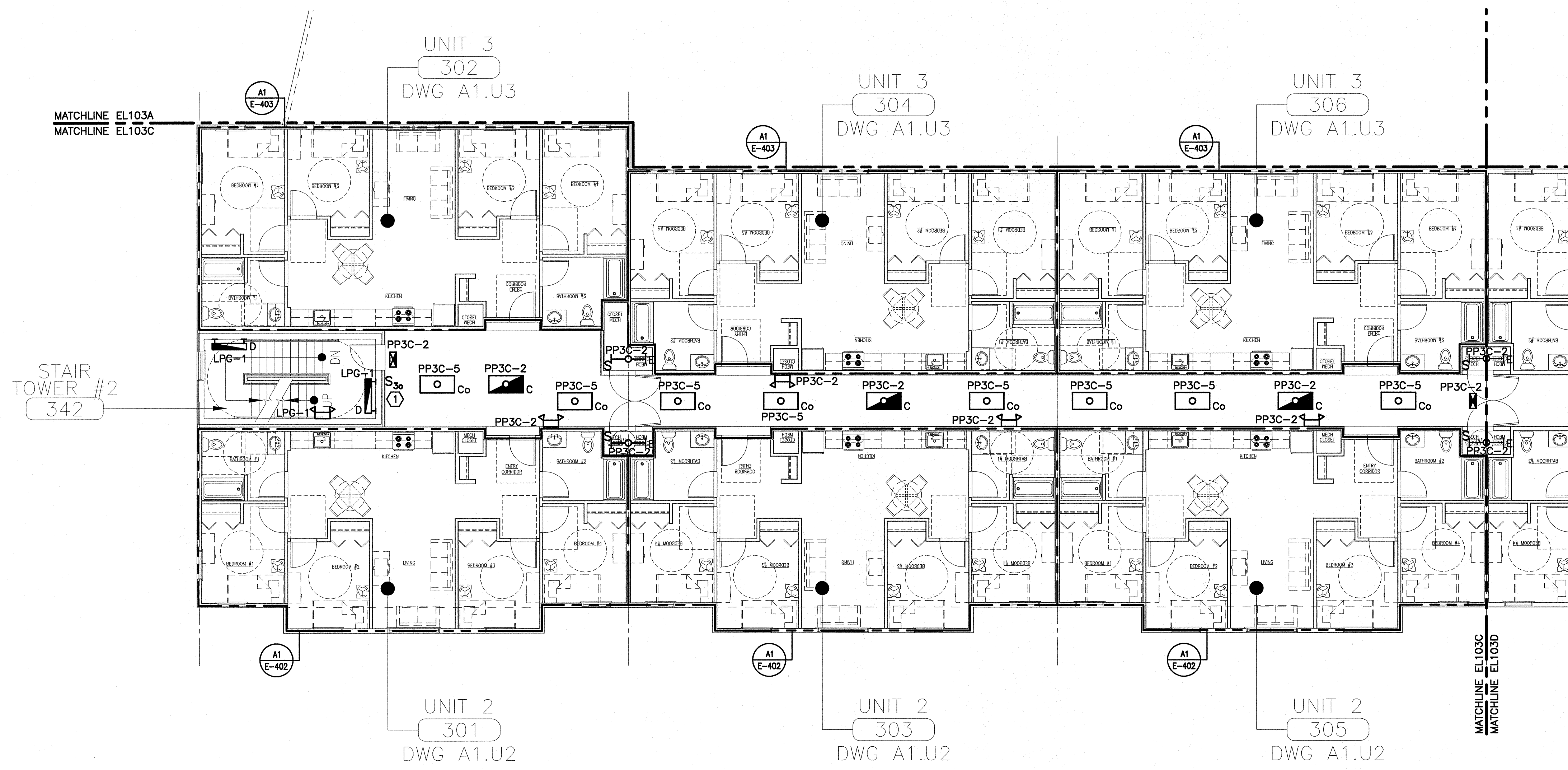
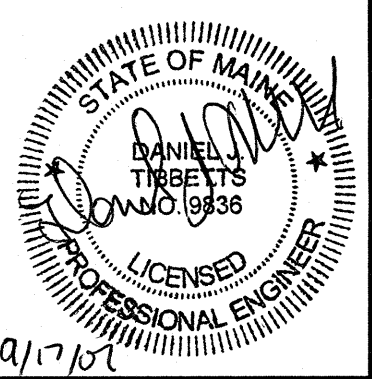
SM
RT

ARCHITECTURE ENGINEERING PLANNING

SWRT
 144 Fore Street/P.O. Box 618
 Portland, Maine 04104
 tel. (207) 772-3846
 fax. (207) 772-1070

KEYED NOTE:

① SEE SHEET EL103D FOR LOCATION OF SECOND THREE WAY SWITCH.



PROJECT TITLE:
**BAYSIDE VILLAGE
 STUDENT HOUSING COMPLEX**
 PORTLAND, ME

CURRENT ISSUE STATUS:
ISSUED FOR CONSTRUCTION
 9-14-07

REV	DESCRIPTION	DATE
0	ISSUED FOR CONSTRUCTION	9-14-07

GRAPHIC SCALE:
 0" 1"

SCALE: 1/8"=1'-0"

PROJECT MANAGER: DJT
 JC/DRAWN BY: CDS
 A/E OF RECORD: DJT
 CAD FILE: EL103C-07125
 PROJECT NO: 07125
 DATE: 9-14-07

SHEET TITLE:
**THIRD FLOOR
 LIGHTING PLAN C**

SHEET No.
EL103C

A1 THIRD FLOOR PLAN

1/8"=1'-0"