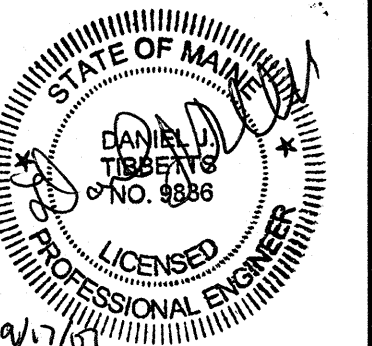
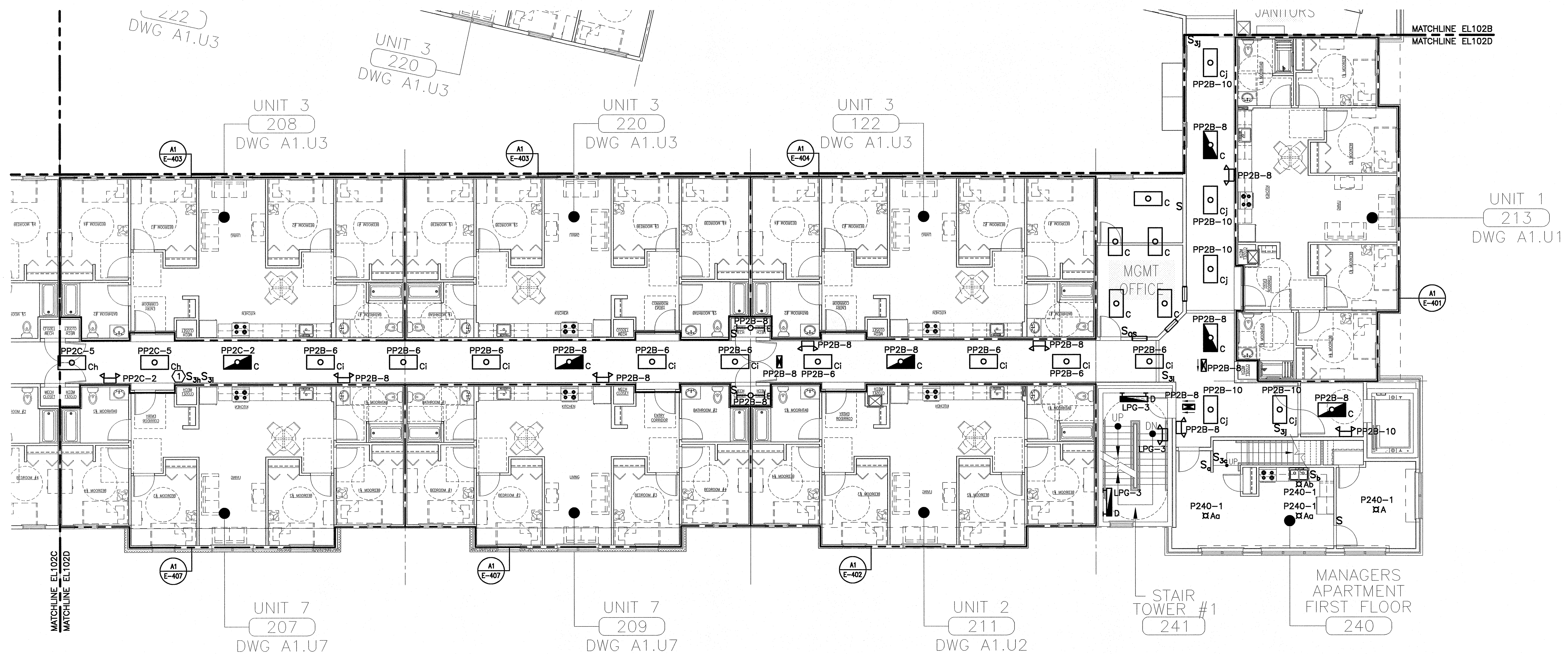


NOTE:

1. SEE SHEET E-001 FOR LEGEND AND GENERAL NOTES.

KEYED NOTE:

① SEE SHEET EL102C FOR LOCATION OF SECOND THREE WAY SWITCH.



BAYSIDE VILLAGE
STUDENT HOUSING COMPLEX
 PORTLAND, ME

PROJECT TITLE:
 CURRENT ISSUE STATUS:
ISSUED FOR CONSTRUCTION
9-14-07

REV	DESCRIPTION	DATE
0	ISSUED FOR CONSTRUCTION	9-14-07

GRAPHIC SCALE:
 0" 1"
 SCALE: 1/8"=1'-0"
 PROJECT MANAGER: DJT
 JC/DRAWN BY: CDS
 A/E OF RECORD: DJT
 CAD FILE: EL102D-07125
 PROJECT NO: 07125
 DATE: 9-14-07
 SHEET TITLE:

SECOND FLOOR
LIGHTING PLAN D

SHEET No.
EL102D
©Copyright 2007 ESB Inc.

A1 SECOND FLOOR PLAN

1/8"=1'-0"