

NOTE:

1. SEE SHEET E-001 FOR LEGEND AND GENERAL NOTES.

ESB
E.S. BOULOS CO
ELECTRICAL CONTRACTORS

45 BRADLEY DRIVE
WESTBROOK, ME 04092
TEL: (207) 464-3706
FAX: (207) 464-1833

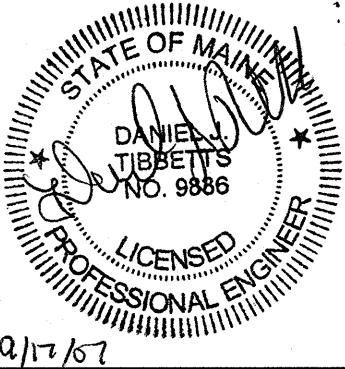
SM
RT

ARCHITECTURE ENGINEERING PLANNING
SMRT

144 Fore Street P.O. Box 618
Portland, Maine 04104
tel. (207) 772-3946
fax. (207) 772-1070

KEYED NOTE:

① SEE SHEET EL101D FOR LOCATION OF SECOND THREE WAY SWITCH.



01/15/07

PROJECT TITLE:
**BAYSIDE VILLAGE
STUDENT HOUSING COMPLEX**
PORTLAND, ME

CURRENT ISSUE STATUS:
**ISSUED FOR CONSTRUCTION
9-14-07**

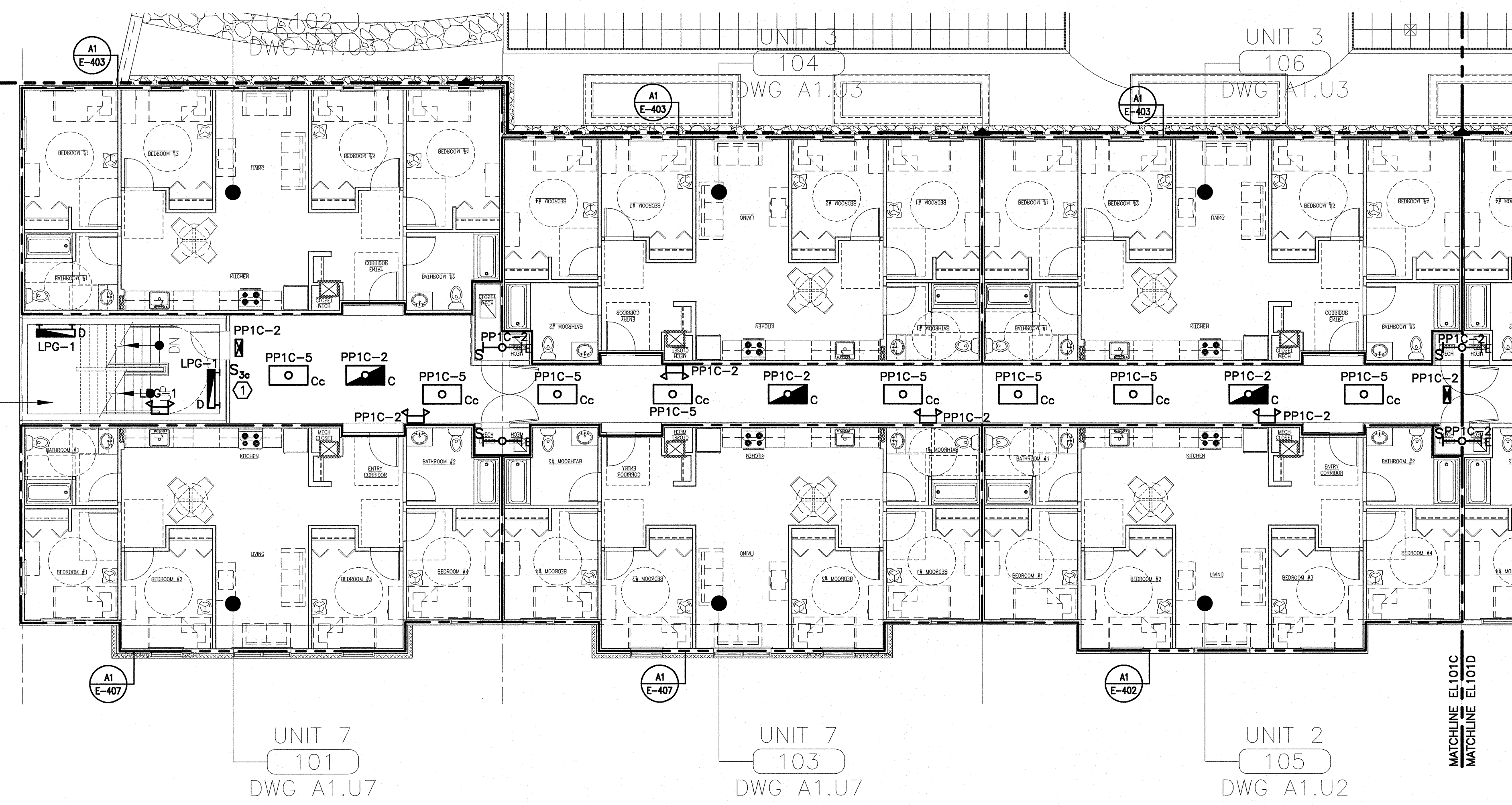
REV	DESCRIPTION	DATE
0	ISSUED FOR CONSTRUCTION	9-14-07

GRAPHIC SCALE:
0" 1"

SCALE: 1/8"=1'-0"
PROJECT MANAGER: DJT
JC/DRAWN BY: CDS
A/E OF RECORD: DJT
CAD FILE: EL101C-07125
PROJECT NO: 07125
DATE: 9-14-07

SHEET TITLE:
**FIRST FLOOR
LIGHTING PLAN C**

SHEET No.
EL101C



MATCHLINE EL101A
MATCHLINE EL101C

STAIR
TOWER #2
142

A1 FIRST FLOOR PLAN

1/8"=1'-0"