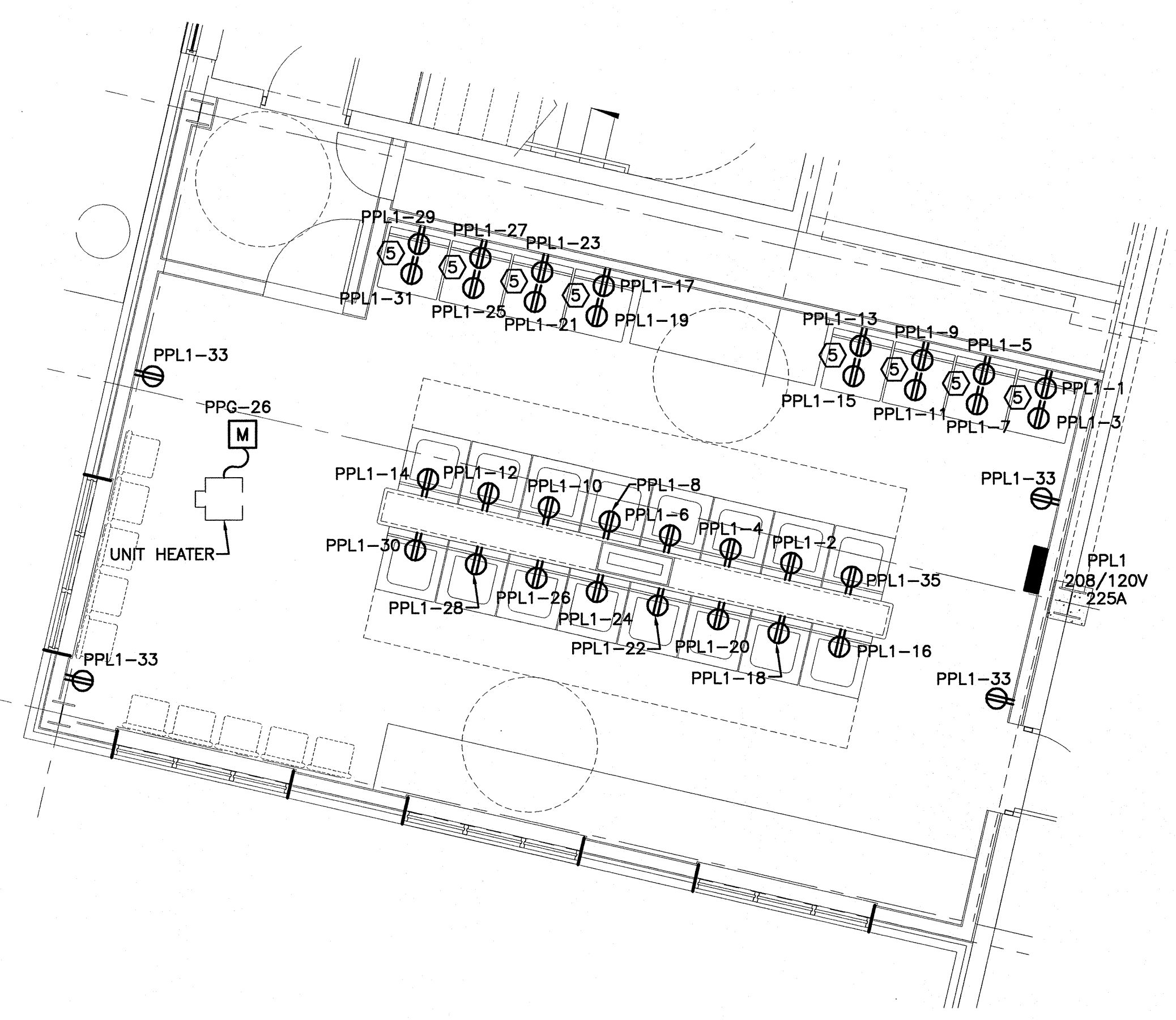


NOTE:

1. SEE SHEET E-001 FOR LEGEND AND GENERAL NOTES.

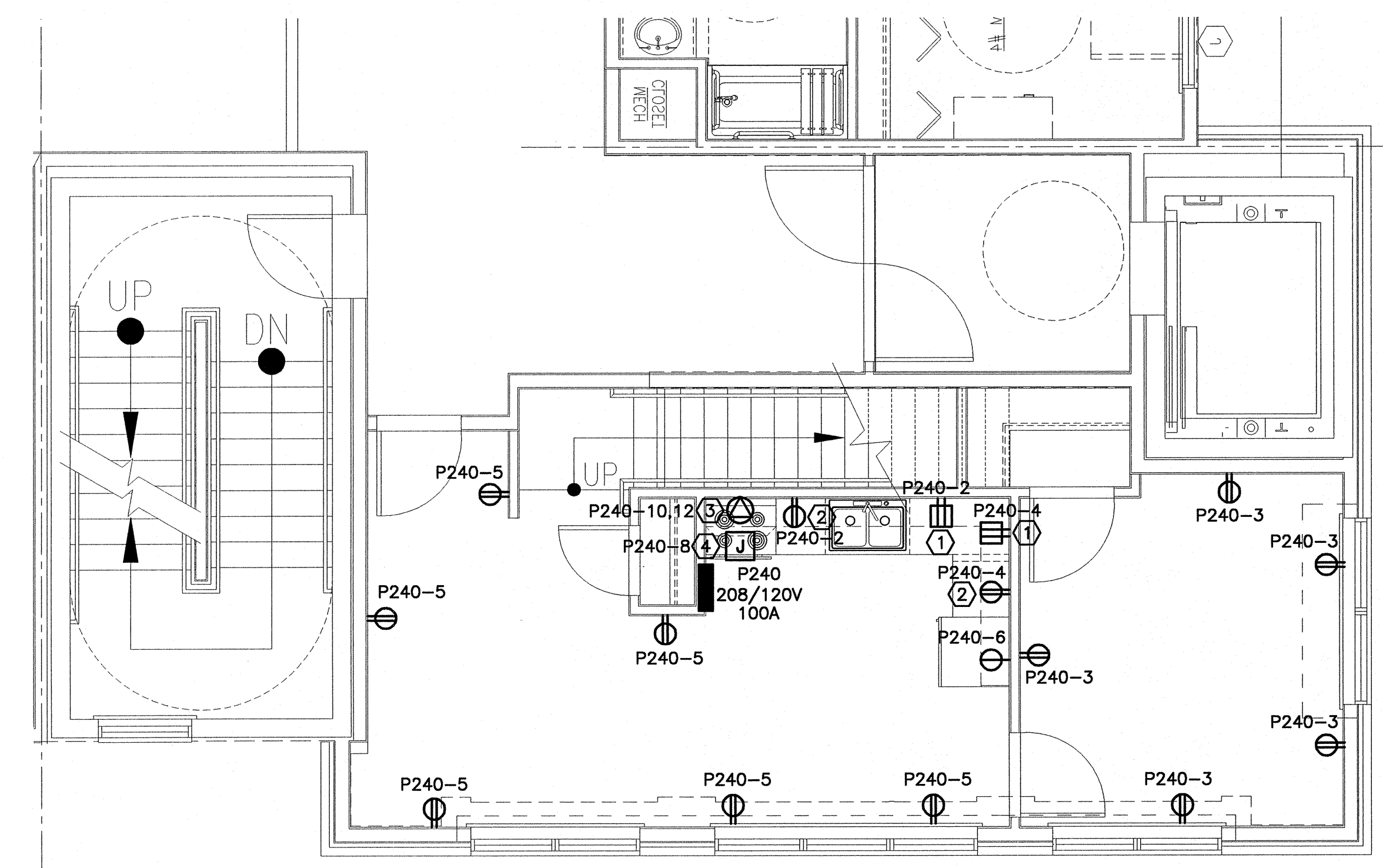
KEYED NOTE:

- ① MOUNT RECEPTACLE 42" AFF TO BOTTOM OF DEVICE.
- ② MOUNT RECEPTACLE 42" AFF TO BOTTOM OF DEVICE. RECEPTACLE TO BE FED ON THE LOAD SIDE OF GFCI RECEPTACLE.
- ③ FURNISH & INSTALL A NEMA 14-50R RECEPTACLE FOR ELECTRIC RANGE. WIRING TO BE 3#8 AWG & #10 GND.
- ④ PROVIDE POWER FOR RANGE HOOD.
- ⑤ MOUNT ONE RECEPTACLE 32" AFF AND SECOND OUTLET 72" AFF FOR STACKED CLOTHES DRYERS.



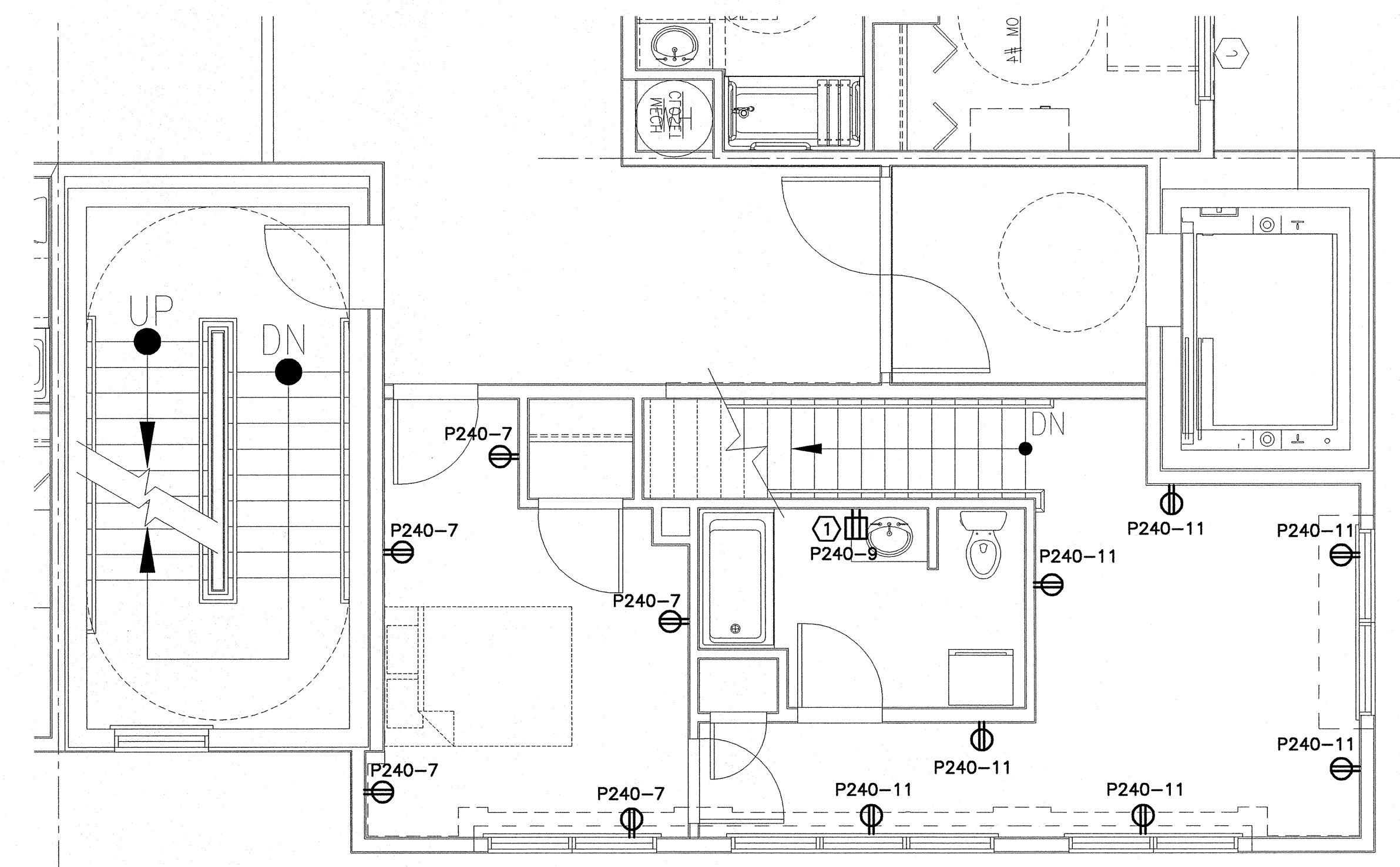
G1 LAUNDRY ROOM POWER

1/4"=1'-0"



A1 MANAGERS APARTMENT POWER 2ND FLOOR

1/4"=1'-0"



A9 MANAGERS APARTMENT POWER 3RD FLOOR

1/4"=1'-0"

PROJECT TITLE
BAYSIDE VILLAGE
STUDENT HOUSING COMPLEX
 PORTLAND, ME

CURRENT ISSUE STATUS
ISSUED FOR CONSTRUCTION
9-14-07

REV	DESCRIPTION	DATE
0	ISSUED FOR CONSTRUCTION	9-14-07

GRAPHIC SCALE:
 0" 1"

SCALE: 1/4"=1'-0"

PROJECT MANAGER: DJT
 JC/DRAWN BY: CDS
 A/E OF RECORD: DJT
 CAD FILE: E-408-07125
 PROJECT NO: 07125
 DATE: 9-14-07

SHEET TITLE:
ELECTRICAL ENLARGED PLANS SHEET 1

SHEET No.
E-408