

NOTE:

- SEE SHEET E-001 FOR LEGEND AND GENERAL NOTES.
- ALL SMOKE DETECTORS TO BE INTERLOCKED WITHIN EACH APARTMENT.

KEYED NOTE:

- MOUNT RECEPTACLE 42" AFF TO BOTTOM OF DEVICE.
- MOUNT RECEPTACLE 42" AFF TO BOTTOM OF DEVICE. RECEPTACLE TO BE FED ON THE LOAD SIDE OF GFCI RECEPTACLE.
- FURNISH & INSTALL A NEMA 14-50R RECEPTACLE FOR ELECTRIC RANGE. WIRING TO BE 3#8 AWG & #10 GND.
- PROVIDE POWER FOR RANGE HOOD.
- PROVIDE POWER FOR FAN COIL UNIT. COORDINATE WITH MECHANICAL CONTRACTOR FOR EXACT LOCATION OF ELECTRICAL CONNECTION.
- RECEPTACLE TO BE FED ON THE LOAD SIDE OF GFCI RECEPTACLE.

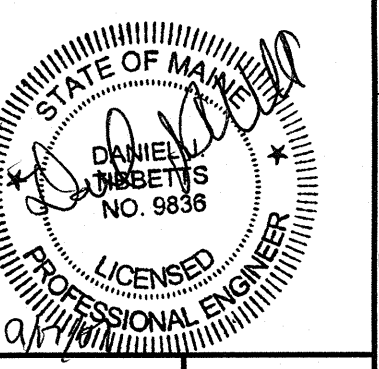
ESB
E.S. BOULOS CO
 ELECTRICAL CONTRACTORS

45 BRADLEY DRIVE
 WESTBROOK, ME 04092
 TEL: (207) 464-3706
 FAX: (207) 464-1833

SMART

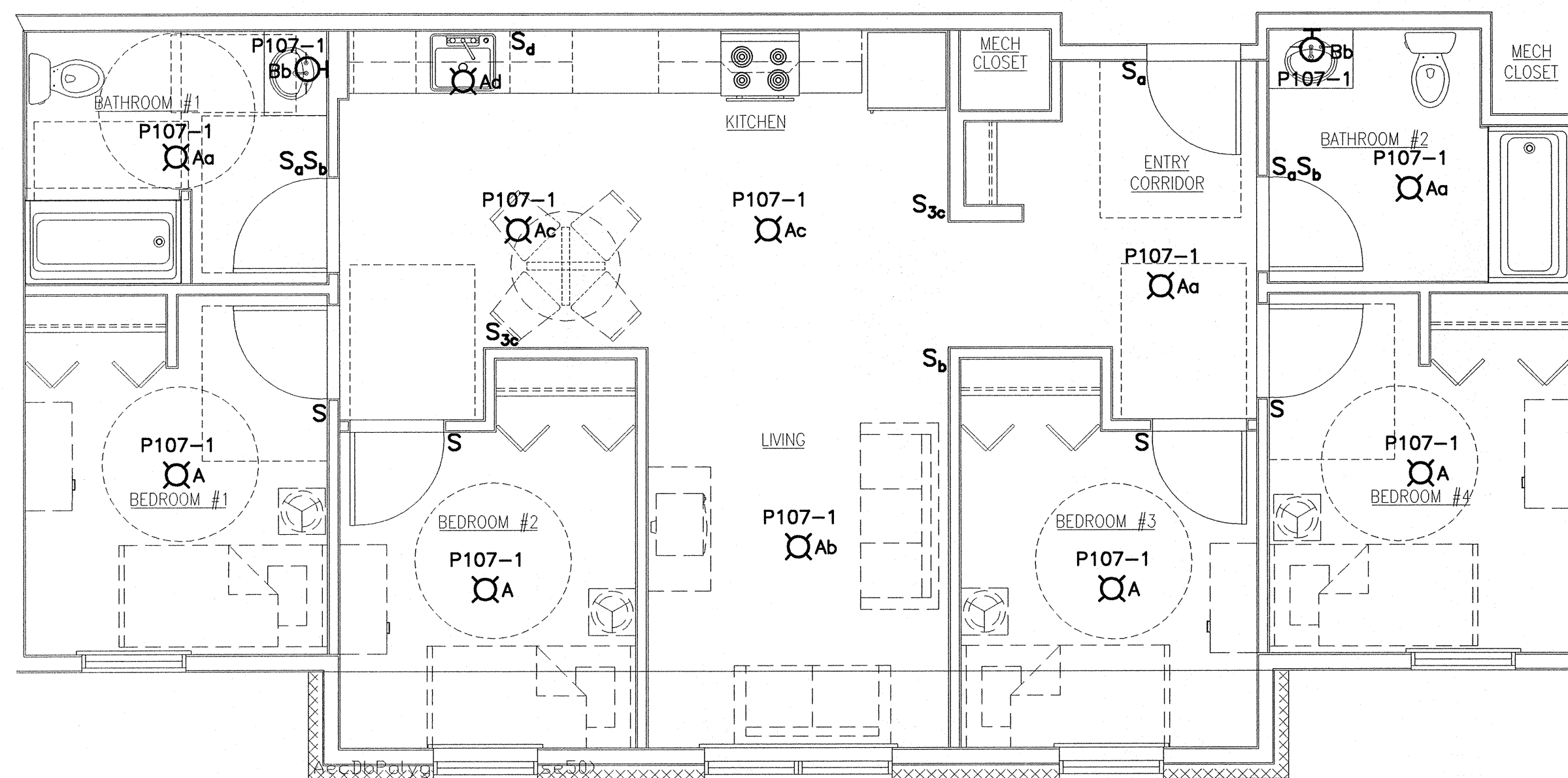
ARCHITECTURE ENGINEERING PLANNING

144 Fore Street, P.O. Box 618
 Portland, Maine 04104
 tel. (207) 772-3846
 fax. (207) 772-1070



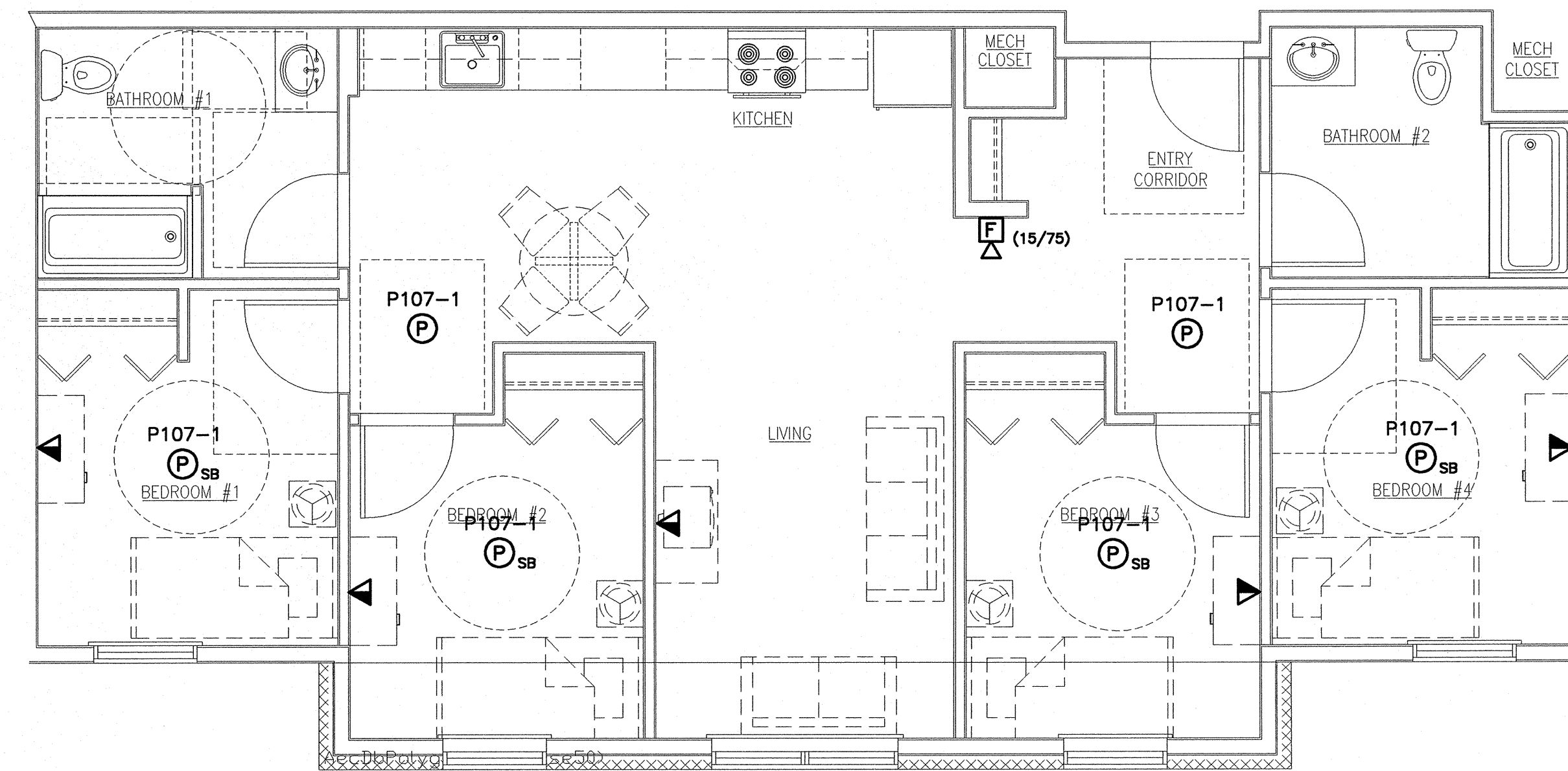
H1 TYPICAL UNIT #7 POWER PLAN

1/4"=1'-0"



A1 TYPICAL UNIT #7 LIGHTING PLAN

1/4"=1'-0"



A9 TYPICAL UNIT #7 SYSTEMS PLAN

1/4"=1'-0"

PROJECT TITLE:
**BAYSIDE VILLAGE
 STUDENT HOUSING COMPLEX**
 PORTLAND, ME

ISSUED FOR CONSTRUCTION
9-14-07

REV	DESCRIPTION	DATE
0	ISSUED FOR CONSTRUCTION	9-14-07

UNIT BASE 7
 ELECTRICAL
 ENLARGED PLANS

SHEET No.
E-407