

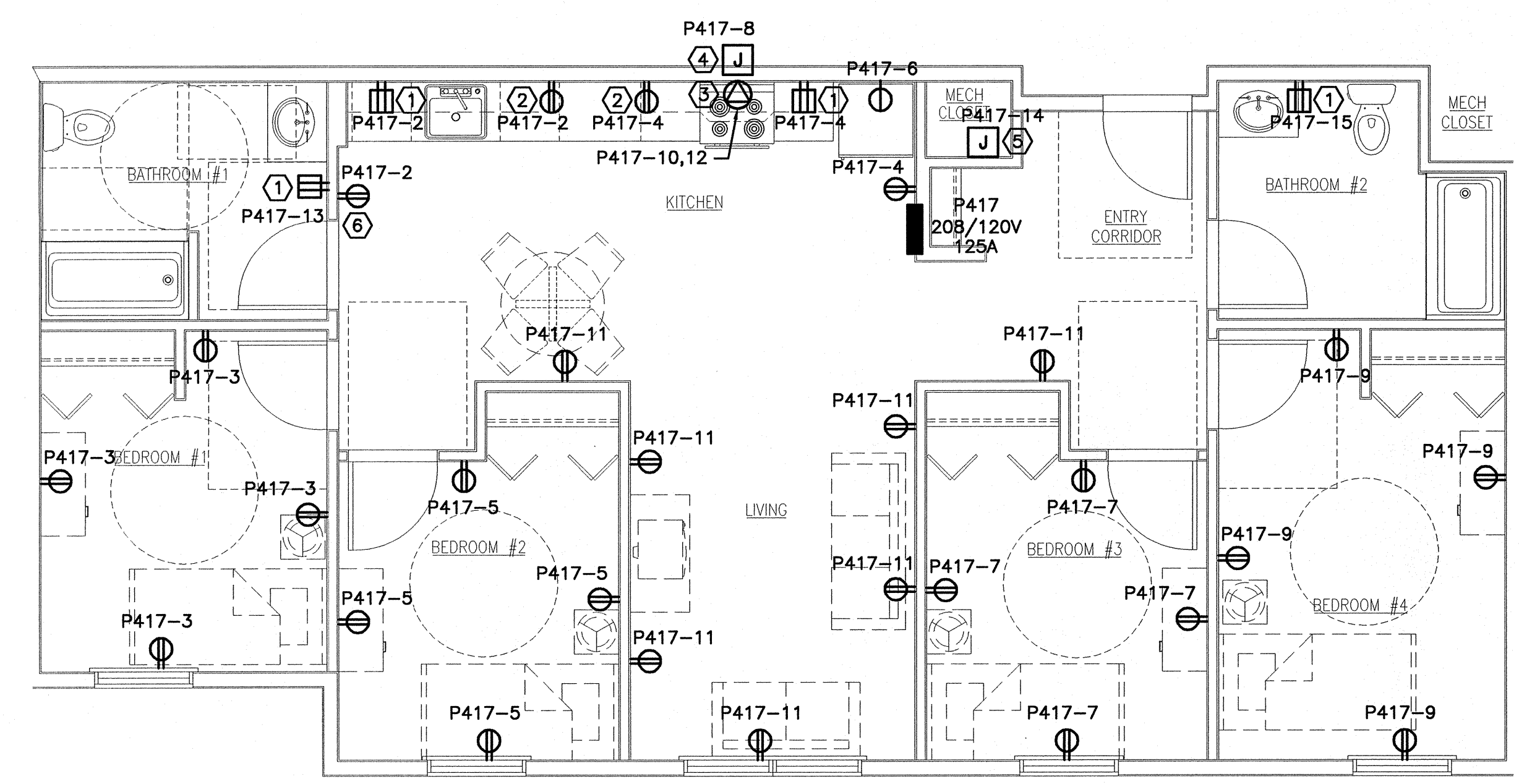
45 BRADLEY DRIVE
WESTBROOK, ME 04092
TEL: (207) 464-3706
FAX: (207) 464-1833

SMRT

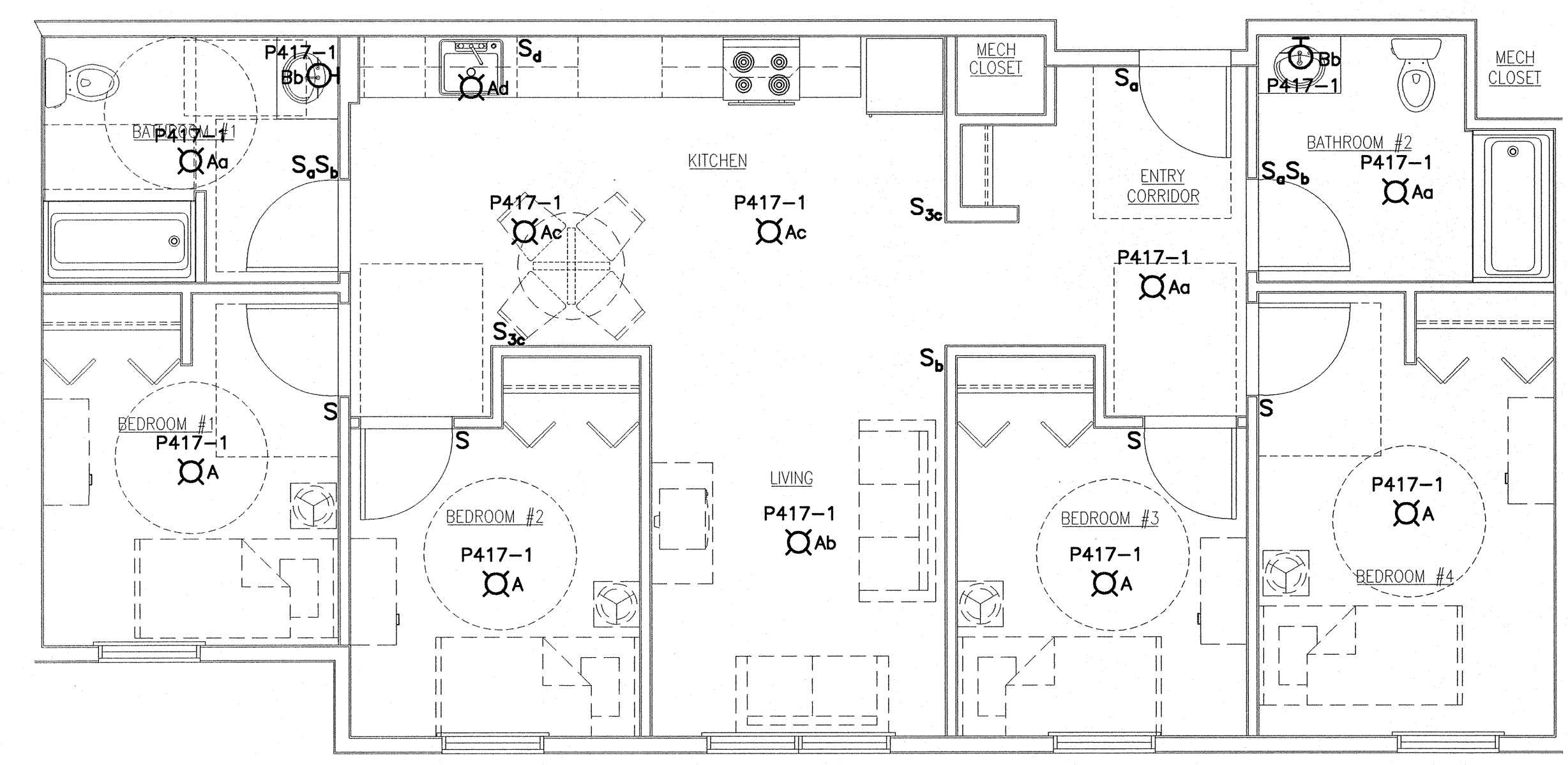
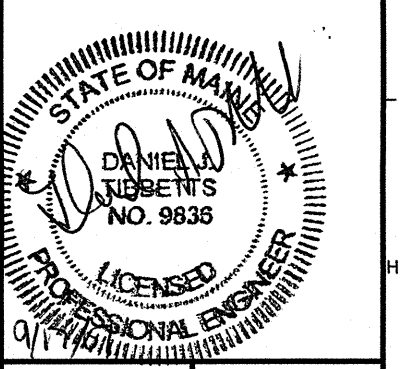
ARCHITECTURE ENGINEERING PLANNING
SMART
144 Fore Street/P.O. Box 618
Portland, Maine 04104
tel. (207) 772-3846
fax. (207) 772-1070

- NOTE:**
- SEE SHEET E-001 FOR LEGEND AND GENERAL NOTES.
 - ALL SMOKE DETECTORS TO BE INTERLOCKED WITHIN EACH APARTMENT.

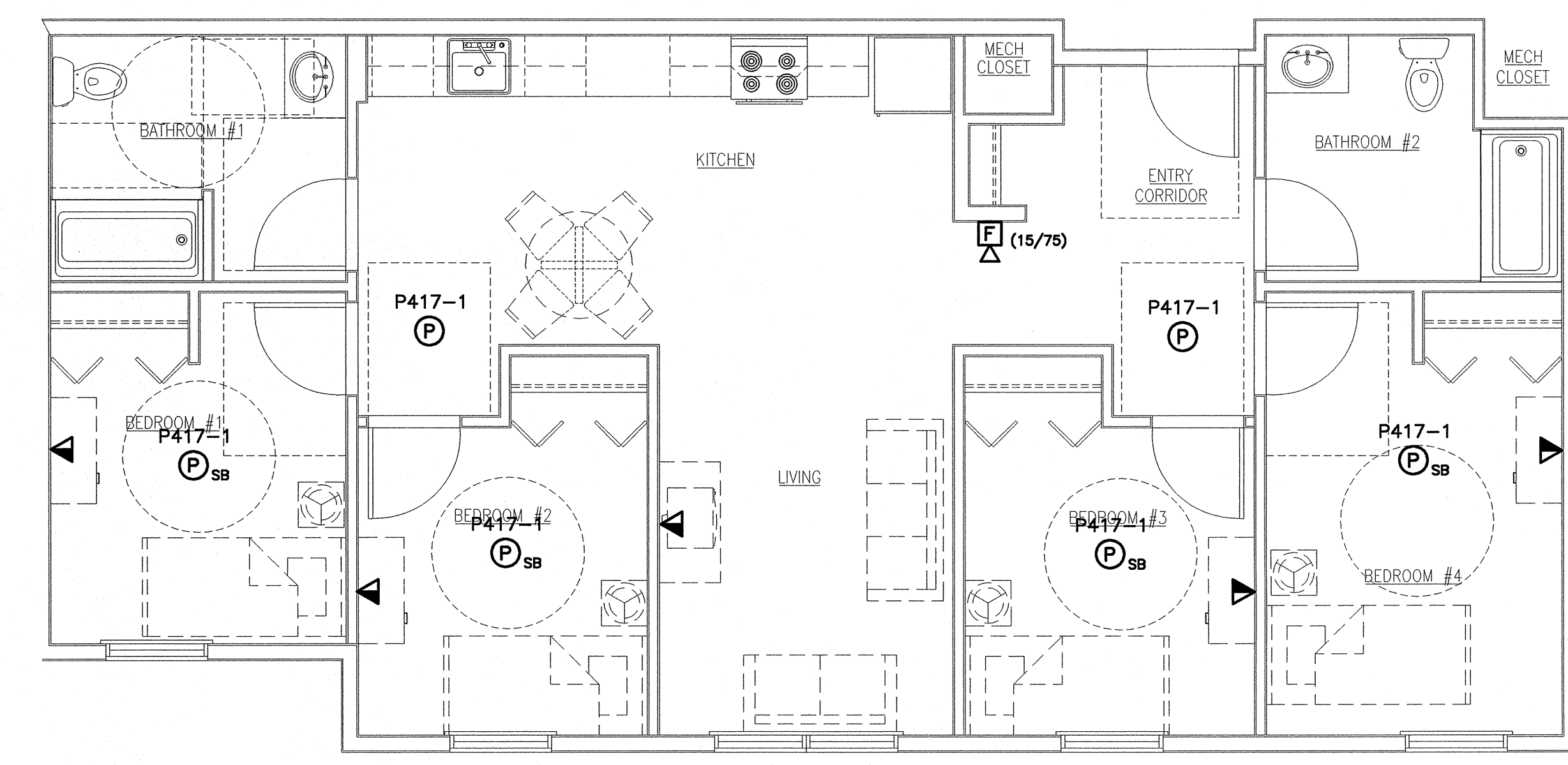
- KEYED NOTE:**
- MOUNT RECEPTACLE 42" AFF TO BOTTOM OF DEVICE.
 - MOUNT RECEPTACLE 42" AFF TO BOTTOM OF DEVICE. RECEPTACLE TO BE FED ON THE LOAD SIDE OF GFCI RECEPTACLE.
 - FURNISH & INSTALL A NEMA 14-50R RECEPTACLE FOR ELECTRIC RANGE. WIRING TO BE 3#8 AWG & #10 GND.
 - PROVIDE POWER FOR RANGE HOOD.
 - PROVIDE POWER FOR FAN COIL UNIT. COORDINATE WITH MECHANICAL CONTRACTOR FOR EXACT LOCATION OF ELECTRICAL CONNECTION.
 - RECEPTACLE TO BE FED ON THE LOAD SIDE OF GFCI RECEPTACLE.



H1 TYPICAL UNIT #5 POWER PLAN
1/4"=1'-0"



A1 TYPICAL UNIT #5 LIGHTING PLAN
1/8"=1'-0"



A9 TYPICAL UNIT #5 SYSTEMS PLAN
1/4"=1'-0"

PROJECT TITLE:
**BAYSIDE VILLAGE
STUDENT HOUSING COMPLEX**
PORTLAND, ME

CURRENT ISSUE STATUS:
**ISSUED FOR CONSTRUCTION
9-14-07**

REV	DESCRIPTION	DATE
0	ISSUED FOR CONSTRUCTION	9-14-07

GRAPHIC SCALE:
0" 1"

SCALE: 1/4"=1'-0"

PROJECT MANAGER: DJT
JC/DRAWN BY: CDS
A/E OF RECORD: DJT
CAD FILE: E-405-07125
PROJECT NO: 07125
DATE: 9-14-07

SHEET TITLE:
**UNIT BASE 5
ELECTRICAL
ENLARGED PLANS**

SHEET No.
E-405