

NOTE:

1. SEE SHEET E-001 FOR LEGEND AND GENERAL NOTES.
2. ALL SMOKE DETECTORS TO BE INTERLOCKED WITHIN EACH APARTMENT.

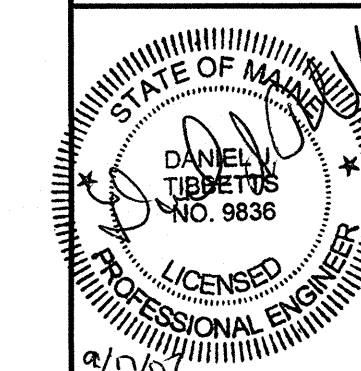
KEYED NOTE:

- ① MOUNT RECEPTACLE 42" AFF TO BOTTOM OF DEVICE.
- ② MOUNT RECEPTACLE 42" AFF TO BOTTOM OF DEVICE. RECEPTACLE TO BE FED ON THE LOAD SIDE OF GFCI RECEPTACLE.
- ③ FURNISH & INSTALL A NEMA 14-50R RECEPTACLE FOR ELECTRIC RANGE. WIRING TO BE 3#8 AWG & #10 GND.
- ④ PROVIDE POWER FOR RANGE HOOD.
- ⑤ PROVIDE POWER FOR FAN COIL UNIT. COORDINATE WITH MECHANICAL CONTRACTOR FOR EXACT LOCATION OF ELECTRICAL CONNECTION.
- ⑥ RECEPTACLE TO BE FED ON THE LOAD SIDE OF GFCI RECEPTACLE.

ESB
E.S. BOULOS CO
 ELECTRICAL CONTRACTORS

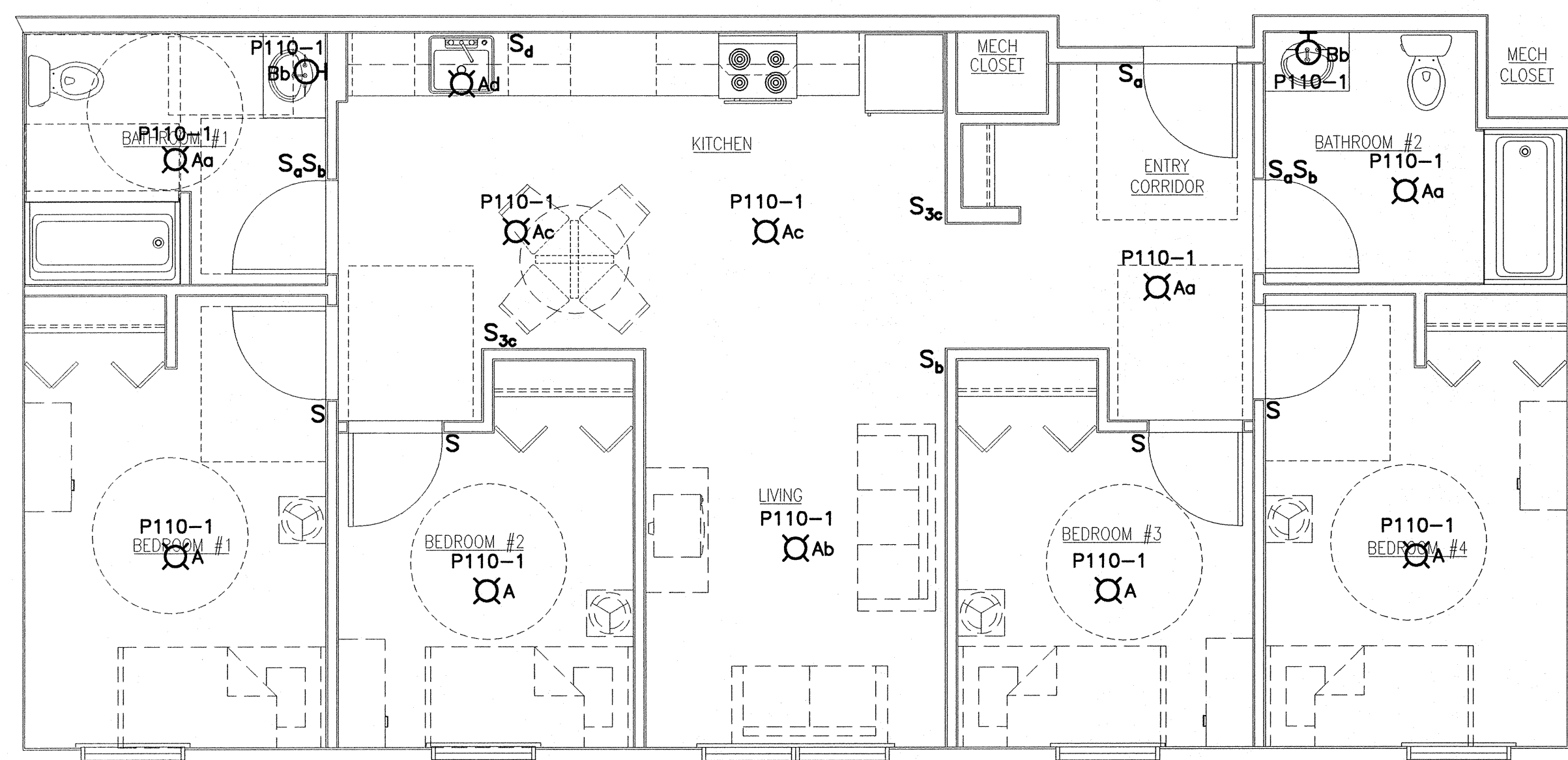
45 BRADLEY DRIVE
 WESTBROOK, ME 04092
 TEL: (207) 464-3706
 FAX: (207) 464-1833

ARCHITECTURE ENGINEERING PLANNING
 SMRT
 144 Fore Street/P.O. Box 618
 Portland, Maine 04104
 tel. (207) 772-3846
 fax. (207) 772-0770



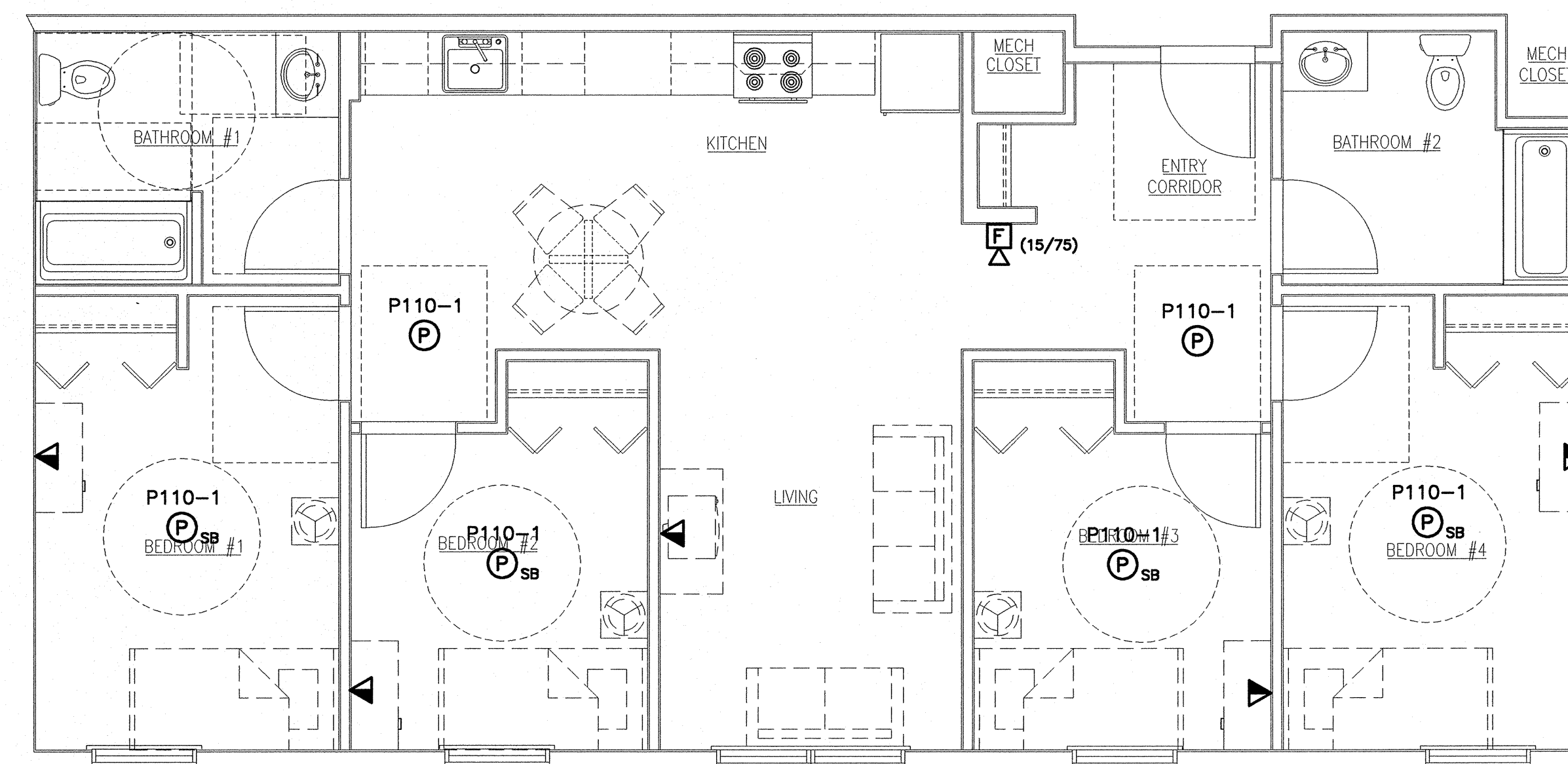
H1 TYPICAL UNIT #3 POWER PLAN

1/4"=1'-0"



A1 TYPICAL UNIT #3 LIGHTING PLAN

1/4"=1'-0"



A9 TYPICAL UNIT #3 SYSTEMS PLAN

1/4"=1'-0"

PROJECT TITLE:
**BAYSIDE VILLAGE
 STUDENT HOUSING COMPLEX**
 PORTLAND, ME
 CURRENT ISSUE STATUS:
**ISSUED FOR CONSTRUCTION
 9-14-07**

REV	DESCRIPTION	DATE
0	ISSUED FOR CONSTRUCTION	9-14-07

GRAPHIC SCALE:
 0" = 1'

SCALE: 1/4"=1'-0"
 PROJECT MANAGER: DJT
 JC/DRAWN BY: CDS
 A/E OF RECORD: DJT
 CAD FILE: E-403-07125
 PROJECT NO: 07125
 DATE: 9-14-07

SHEET TITLE:
**UNIT BASE 3
 ELECTRICAL
 ENLARGED PLANS**

SHEET No.
E-403