

NOTE:

1. SEE SHEET E-001 FOR LEGEND AND GENERAL NOTES.
2. ALL SMOKE DETECTORS TO BE INTERLOCKED WITHIN EACH APARTMENT.

KEYED NOTE:

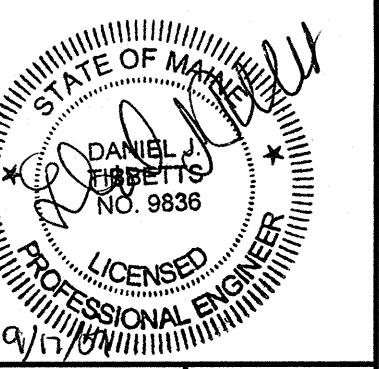
- ① MOUNT RECEPTACLE 42" AFF TO BOTTOM OF DEVICE.
- ② MOUNT RECEPTACLE 42" AFF TO BOTTOM OF DEVICE. RECEPTACLE TO BE FED ON THE LOAD SIDE OF GFCI RECEPTACLE.
- ③ FURNISH & INSTALL A NEMA 14-50R RECEPTACLE FOR ELECTRIC RANGE. WIRING TO BE 3#8 AWG & #10 GND.
- ④ PROVIDE POWER FOR RANGE HOOD.
- ⑤ PROVIDE POWER FOR FAN COIL UNIT. COORDINATE WITH MECHANICAL CONTRACTOR FOR EXACT LOCATION OF ELECTRICAL CONNECTION.
- ⑥ RECEPTACLE TO BE FED ON THE LOAD SIDE OF GFCI RECEPTACLE.

ESB
E.S. BOULOS CO
 ELECTRICAL CONTRACTORS

45 BRADLEY DRIVE
 WESTBROOK, ME 04092
 TEL: (207) 464-3706
 FAX: (207) 464-1833

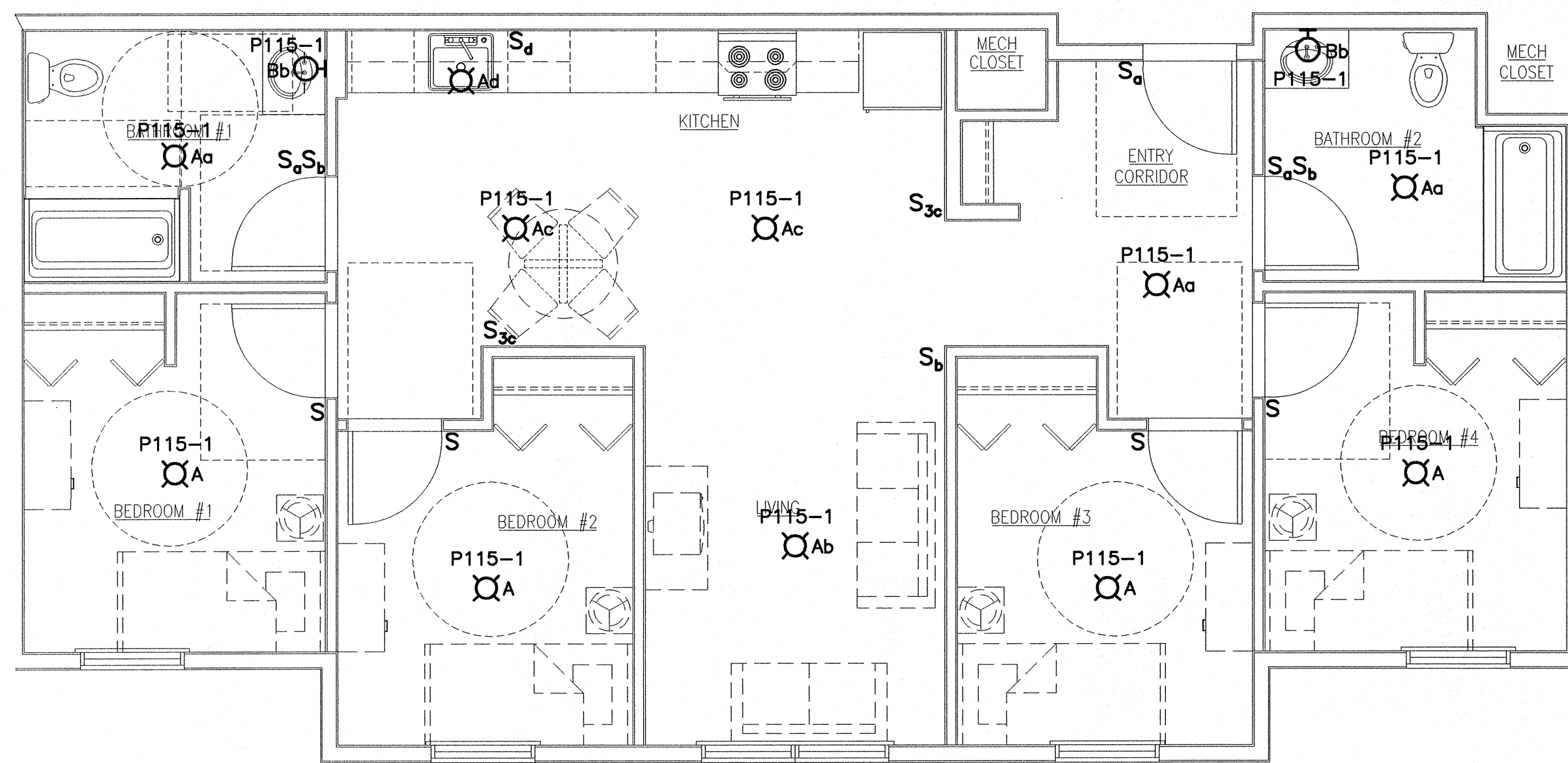
SMART

ARCHITECTURE ENGINEERING PLANNING
 SMART
 144 Fore Street/P.O. Box 618
 Portland, Maine 04104
 tel. (207) 772-8846
 fax. (207) 772-1070



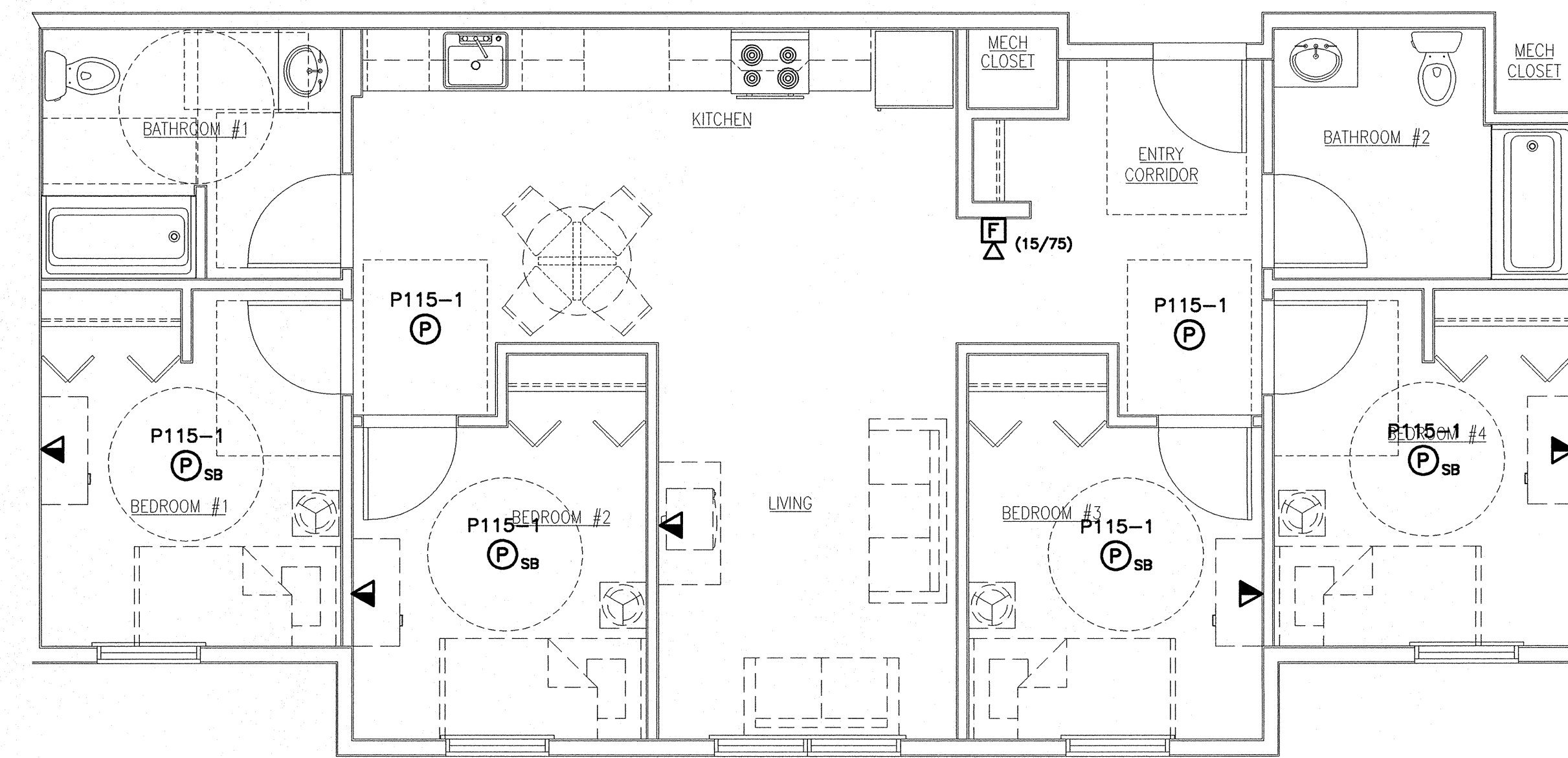
H1 TYPICAL UNIT #2 POWER PLAN

1/4"=1'-0"



A1 TYPICAL UNIT #2 LIGHTING PLAN

1/4"=1'-0"



A9 TYPICAL UNIT #2 SYSTEMS PLAN

1/4"=1'-0"

PROJECT TITLE:
BAYSIDE VILLAGE
STUDENT HOUSING COMPLEX
 PORTLAND, ME

CURRENT ISSUE STATUS:
ISSUED FOR CONSTRUCTION
9-14-07

REV	DESCRIPTION	DATE
0	ISSUED FOR CONSTRUCTION	9-14-07

GRAPHIC SCALE:

SCALE: 1/4"=1'-0"

PROJECT MANAGER: DJT
 JC/DRAWN BY: CDS
 A/E OF RECORD: DJT
 CAD FILE: E-402-07125
 PROJECT NO: 07125
 DATE: 9-14-07

SHEET TITLE:
UNIT BASE 2
ELECTRICAL
ENLARGED PLANS

SHEET No.
E-402